

## 46FT 2003 HUNTER 466 — HUNTER



**Builder:** HUNTER

**Year Built:** 2003

**Model:** Cruising Sailboat

**Price:** PRICE ON APPLICATION

**Location:** United States

**LOA:** 46' 0" (14.02m)

**Beam:** 14' 0" (4.27m)

**Max Draft:** 5' 6" (1.68m)

Our experienced yacht broker, Andrey Shestakov, will help you choose and buy a yacht that best suits your needs 46ft 2003 Hunter 466 — HUNTER from our catalogue. Presently, at Shestakov Yacht Sales Inc., we have a wide variety of yachts available on our sale's list. We also work in close contact with all the big yacht manufacturers from all over the world.

If you would like to buy a yacht 46ft 2003 Hunter 466 — HUNTER or would like help answering any questions concerning purchasing, selling or chartering a yacht, please call +1(954)274-4435

---

# TABLE OF CONTENTS

---

TABLE OF CONTENTS	2
SPECIFICATIONS	3
Basic Information	3
Dimensions	3
Speed, Capacities and Weight	3
Accommodations	3
Hull and Deck Information	3
Engine Information	3
DETAILED INFORMATION	4
Details	4
Exclusions	7
Disclaimer	8
PHOTOS	9
CONTACTS	19
Contact details	19
Telephones	19
Office hours	19
Address	19

---

# SPECIFICATIONS

---

## Basic Information

---

**Category:** Cruising Sailboat

**Model Year:** 2003

**Year Built:** 2003

**Country:** United States

## Dimensions

---

**LOA:** 46' 0" (14.02m)

**Beam:** 14' 0" (4.27m)

**Max Draft:** 5' 6" (1.68m)

**Clearance:** 60' 0" (18.29m)

## Speed, Capacities and Weight

---

**Displacement:** 26180 Pounds

**Water Capacity:** 200 Gallons

**Holding Tank:** 50 Gallons

**Fuel Capacity:** 99 Gallons

## Accommodations

---

**Total Cabins:** 2

**Total Heads:** 2

## Hull and Deck Information

---

**Hull Material:** Fiberglass

## Engine Information

---

**Engines:** 1

**Manufacturer:** Yanmar

**Model:** 4JH3-TE

**Engine Type:** Inboard

**Fuel Type:** Diesel

---

# DETAILED INFORMATION

---

## Details

---

### Power

- **Yanmar 4JH3-TE, 75hp turbo - 665 hours**
- Prop Shaft - 1-1/4" stainless steel
- Prop – 19" three blade MaxiProp
- Kanzaki transmission - 2.61:1 ratio

### Electronics

- VHF – Icom IC-MR02 with remote power mic at helm station
- Chartplotter/Radar Display/GPS
  - Raymarine RL80C 10" screen at helm station
  - Raymarine RL70 7" screen at nav station
  - Raymarine RN 300 in office
  - Raymarine Maxview repeater screen above companion way
- Auto Pilot – Raymarine 6001 linear drive
- Speed/Depth/Wind – Raymarine ST60
- Antennas
  - Raymarine 4kw radom mounted on mast
  - Raymarine GPS
  - SSB/VHF mounted on double 180" extenders
  - KVH TracVision television
- Single Side Band – Icom IC-M802
- WIFI booster (Wifie)

## Safety

- PFD's including type IV throwable
- Fire extinguishers
- Engine room automatic fire system – Sea Fire
- Safe-T-Alert Carbon Monoxide alarm (One in master stateroom, one in aft cabin)
- EPIRB – Class B, Model ACR/RLB-21

## Deck

- Cockpit shower (hot and cold)
- Wheel – Whitlock with 36” stainless steel wheel and cover
- Anchor – 35 lb Delta with 100' line and 20' chain
- Windlass – Electric – Simpson Lawrence Horizon 1500
- Winches
  - Two Lewmar 50 ST two-speed jib sheet winches
  - Two Lewmar 48 ST two-speed winches
  - One Lewmar 44 ST two-speed winch (halyard)
  - **One Lewmar 48 ST two-speed electric winch**
  - Sails – Main - UK roller furling, Headsail - UK 110% furling with UV cover
  - **Eisenglass – Bimini and dodger canvas in very good condition**
- Full cockpit seat cushions

## Electrical

### DC

- Batteries
  - House - 4 6 volt Trojans
  - Generator – One 24 series AGM

- Starter – One 24 series AGM
- Battery Charger - Heart Interface 2500 Inverter with 130 amp charger
- 12 volt “cigarette lighter” outlets – One at nav desk. One at helm station
- 13 x 17 solar panel mounted on cabin top

## AC

- Dual 30 amp t110 volt service
- Dual Marincor 30 amp twist lock shore power cords
- **Galvanic isolator monitoring system**
- 

**Generator Northern Lights M673L, 6 kw – 352 hours**

## Entertainment

- **KVH TracVision television**
- Stereo – Kendwood KDC-M819 AM/FM/CD controller in cockpit
- Bose CD player with surround sound and sub-woofer in salon
- FlexVision DVD player in master stateroom
- Speakers
  - Two flush mount in cockpit arch
  - Bose surround sound in salon
- Televisions
  - Sharp 20” Aqous flat screen in salon
  - Sharp 10” flat screen in master stateroom
  - Direct TV receiver

## Galley

- Adler Barbour dual compresso freezer and refrigeration
- Microwave – Origo

- Force 10 three burner LPG stove with oven

## Head

- Foreward – Vacuflush. Separate shower cabin
- Aft – Manual head. Shower part of head
- Macerators – Two Jabsco model 18590-1500
- Two holding tanks

## Tools/Spares

- Two winch handles, some tools, some spare parts, small manual bilge pump

## Misc

- **Air Conditioners – Marine Air reverse cycle units**
  - **Salon model VCP16HV 16,000 BTU's**
  - **Master model VCP12HV 12,000 BTU's**
- Washer/Dryer – Splendide - Combomatic 2000 automatic washer and condensing dryer
- DInghy Mercury 9.5' and Mercury 6 hp outboard
- Water heater – Atwood model S-1100, 11 gallons
- Salon table – Cocktail table top and Dining table top options

---

## Exclusions

Owner's personal belongings.

---

## Disclaimer

---

The Company offers the details of this vessel or yacht in good faith but cannot guarantee or warrant the accuracy of this information nor warrant the condition of the vessel. A buyer should instruct his representatives, agents, or his surveyors, to investigate such details as the buyer desires validated. This vessel or yacht is offered subject to prior sale, price change, or withdrawal without notice.



# PHOTOS















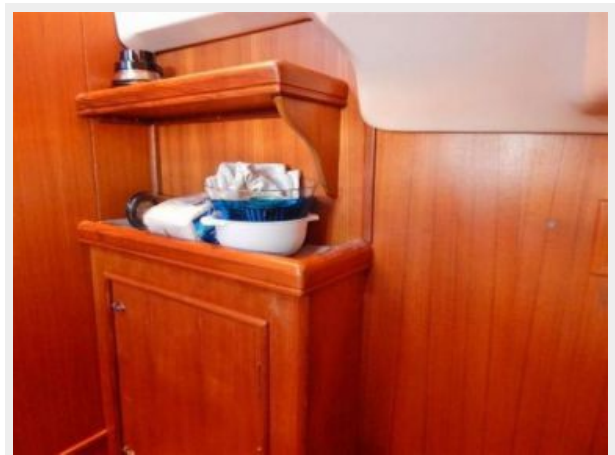


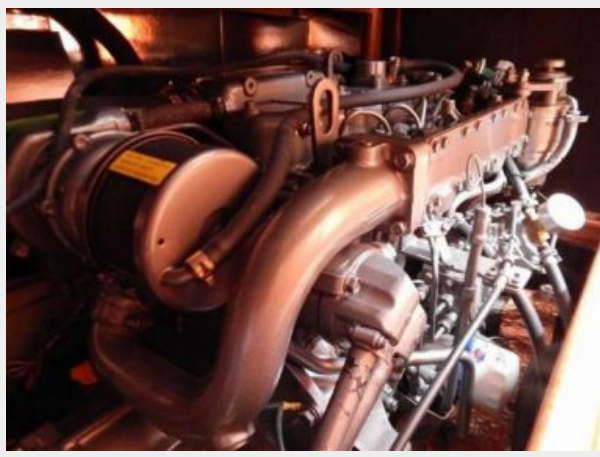












# CONTACTS

---

Andrey Shestakov, leading yacht broker of the sales department of Shestakov Yacht Sales Inc. Shestakov Yacht Sales Inc., the official representative of the Miami/Fort Lauderdale FL headquarters.

## Contact details

---

Email: [andrey@shestakovyachtsales.com](mailto:andrey@shestakovyachtsales.com)

Web: [shestakovyachtsales.com/en/](http://shestakovyachtsales.com/en/)

## Telephones

---

USA: +1(954)274-4435

## Office hours

---

Monday – Saturday: **9:00 - 21:00** EDT

Sunday: **closed**

## Address

---



Harbour Towne Marina, 850 NE 3rd St,  
STE 213, Dania, FL 33004