

ANDALE II — MIKELSON



Builder: MIKELSON

Year Built: 2008

Model: Sport Fisherman

Price: PRICE ON APPLICATION

Location: United States

LOA: 50' 5" (15.37m)

Beam: 16' 8" (5.08m)

Max Draft: 3' 10" (1.17m)

Cruise Speed: 22 Kts. (25 MPH)

Max Speed: 26 Kts. (30 MPH)

Our experienced yacht broker, Andrey Shestakov, will help you choose and buy a yacht that best suits your needs **ANDALE II — MIKELSON** from our catalogue. Presently, at Shestakov Yacht Sales Inc., we have a wide variety of yachts available on our sale's list. We also work in close contact with all the big yacht manufacturers from all over the world.

If you would like to buy a yacht **ANDALE II — MIKELSON** or would like help answering any questions concerning purchasing, selling or chartering a yacht, please call **+1(954)274-4435**

TABLE OF CONTENTS

TABLE OF CONTENTS	2
SPECIFICATIONS	4
Overview	4
Basic Information	4
Dimensions	4
Speed, Capacities and Weight	4
Accommodations	5
Hull and Deck Information	5
Engine Information	5
DETAILED INFORMATION	6
50' Mikelson Motor Yacht ANDALE II	6
Exclusions	10
Disclaimer	10
PHOTOS	11
Aft	11
Cockpit	11
Salon Looking Aft	11
Salon	11
Salon	11
Salon	11
Galley	12
Dinette	12
Companionway	12
Master Stateroom	12
Master Stateroom Head	12
Guest Stateroom	12
Guest Stateroom Head	13
Flybridge Looking Forward	13

Flybridge	13
Flybridge Aft	13
Flybridge Seats	13
Helm	13
Controls	14
Flybridge Aft Controls	14
Forward	14
Forward Deck	14
Radar	14
Top Seating	14
Tender & Davit	15
CONTACTS	16
Contact details	16
Telephones	16
Office hours	16
Address	16

SPECIFICATIONS

Overview

Andale II is one of the finest Mikelson 50's ever built, this popular convertible was designed by Tom Fexas together with experienced owners whom selected a variety of custom options and upgrades. Very appealing lines with exceptional range, this yacht blurs the line between a hard hitting fishing machine and executive class cruising yacht. Wide 16'8" beam permits a truly expansive interior with wide open salon, two large staterooms with large ensuite heads. Large well appointed cockpit with ample storage, tackle center, live bait wells, aft control station and generous engine room access with hydraulic hatches. Custom molded steps lead to the huge flybridge which features dual control stations, air conditioning and circular settee forward. Weight efficient (fully cored) hull delivers impressive performance and draws only 3'10"!

Basic Information

Category: Sport Fisherman

Model Year: 2008

Year Built: 2008

Country: United States

Fly Bridge: Yes

Cockpit: Yes

Dimensions

LOA: 50' 5" (15.37m)

Beam: 16' 8" (5.08m)

Max Draft: 3' 10" (1.17m)

Speed, Capacities and Weight

Cruise Speed: 22 Kts. (25 MPH)

Max Speed: 26 Kts. (30 MPH)

Displacement: 45000 Pounds

Water Capacity: 250 Gallons

Holding Tank: 80 Gallons

Fuel Capacity: 1000 Gallons

Accommodations

Total Cabins: 2

Total Berths: 4

Total Heads: 2

Hull and Deck Information

Hull Material: Fiberglass

Engine Information

Engines: 2

Manufacturer: Cummins

Model: QSC 8.3

Engine Type: Inboard

Fuel Type: Diesel

DETAILED INFORMATION

50' Mikelson Motor Yacht ANDALE II

Vessel Walkthrough 55' Feadship Motor Yacht LIONWIND Hull

- Underwater Lights (2)
- Swim Platform w/Ladder & U-Rails
- Custom Boot Stripe & Accent Stripe
- Nonskid Molded Fiberglass Fore and Side Decks
- Stainless Steel Quarter Rails on Tumblehome
- Chrome Over Bronze Vents (to prevent rust)
- Nibral Propellers
- Clam-shell Underwater Exhaust
- Bennett Trim Tabs

Deck

- Stainless Steel Rails w/Fender Holders
- Bruce 44 lb. Claw Anchor Mounted Through Stem
- Spare Danforth Fortress Anchor
- Anchor Windlass w/300' 5/16" chain (no line)
- Stainless Steel Deck Hardware & Hatches
- 1,000 lb. Low Profile Davit w/Remote
- Factory Bow Plank w/Stainless Steel Rail
- Textaline Window Covers - Front Windows
- Frameless Windows
- 6 Man Winslow life raft

Cockpit

- Molded Stairs w/Teak to Flybridge
- Teak Cockpit
- Locker w/Rod Storage
- Electric Engine Hatch Lifts
- Fishing Tackle Center w/Level Controls
- Engraved Custom Rod Holders
- Recessed Hand Held Shower w/Hot & Cold Fresh Water
- Storage Lockers
- Rocket Launchers (12)
- Engine Controls - Electronic & Thruster

- Insulated Fish Box w/Macerator
- Stereo Speakers w/Controls in Cockpit & Flybridge
- Mooring Hawses (4)
- Cockpit Table
- Glendinning 12V Cable Master Shore Cord Retrieval & Storage

Engine Room/Mechanical

- Dual Racor Filters (Engines), Single Racor Filter (Generator)
- Oil Changer Engines & Generator
- 800 gallon/day Village Marine TEC STW 800 Water Maker w/Remote Start
- Galvanized Finish - Engine Mounts
- Halon Fire Protection System
- Upgrade to Cummins 8.3 liter common-rail engines, fully electronic, low hours
- 13.5 KW Onan/Cummins Generator (483 Hours)
- AC Units - (2) Interior (1) Flybridge
- Sidepower Bow Thruster w/Controls at 3 Stations
- Twin Disc Electronic Controls
- PYI Dripless Shaft Seals

Electrical

- 125/250 VAC Electrical System
- 12 VDC Battery Isolator
- 2000 KW Inverter/Charger System
- (5) Sealed Batteries; (3) House, (2) Starting
- Battery Combiners
- (3) AC units; 16,000 BTU - Master & Salon, 24,000 BTU - Flybridge
- (3) Closed Circuit Cameras - (2) Engine room, (1) Cockpit
- Courtesy Lights

Electronics

- Furuno NAVnet Autopilot w/Two Stations
- Furuno Depth Sounder w/Bronze Thru Hull
- Furuno Speed/Temp Sensor
- Furuno NAVnet vx2 C-MAP NT MAX SD 10.4" LCD 64 Mile Radar w/4' Open Array
- Furuno NAVnet vx2 C-MAP NT MAX SD 10.4" LCD (second unit at helm)
- Garmin GPSmap 5215 15" Touch Screen Chart Plotter
- Icom VHF Marine IC-M604 - Helm

- Icom VHF Marine IC-M422 - Cockpit
- Hailer/Horn
- Sirius Satellite Antennas (2)

Interior - Salon

- Teak & Holly Cabin Sole Throughout Boat
- All Interior Cherry Varnished; Satin on Verticles, Gloss on Rails
- Entertainment Center w/LCD TV & Satellite Antenna
- Sound System w/Recessed Speakers Throughout Boat
- Sub-Zero 424 Wine Cooler
- Custom AC Vents and Ducting
- Wrap Around Settee on Starboard Side w/Custom Upholstery
- Mirror on Starboard Bulkhead Behind Settee
- Bulkhead Mounted Lamp in Corner Above Settee
- Custom Cocktail Table Matching Configuration of Settee
- Cherry Table at Inboard End of Settee
- Day/Night Shades Throughout
- Washer/Dryer
- Intercom to Bridge
- Cantalupi Overhead Lights w/Dimmers
- LED Rope Lighting Throughout
- Recessed Lighted Rod Storage Above Settee

Galley

- Black Granite Counter-top
- Flush Mount Black Cook-top w/no knobs
- Microwave/Convection Oven
- Fisher Paykel Refrigerator/Freezer w/Cherry Veneer
- Locker Above Counter w/Lights Under & Rheostat
- Inboard Side of Locker w/Display Shelf
- Ice Maker Forward of Counter next to Dinette
- Trash Locker w/Roll-out Access
- Stainless Steel Sink w/Cutting Board Cover
- Dishwasher w/Cherry Veneer

Dinette

- Dining Table on Pedestal - Convertible to Double Bed

- L-shaped Settee w/Custom Upholstery
- Freezer Under Dining Settee; Cushion Above in One Piece
- Salon Floor Extends Past Dinette to Accommodate Stools (unique to this 50' Mikelson Yacht)
- (3) Ottoman Type Upholstered Stools
- Custom Cover for Games Table

Master Stateroom

- Center Queen Size Bed w/Custom Bedding & Pillows
- Reading Lights
- All AC Intake & Exhaust Vents are Louvered Cherry
- (2) Hanging Lockers w/Louvered Doors
- Large Storage Drawers Under Bed
- Full Length Mirror on Back of Head Door
- LCD TV

Heads

- Black Granite Counter-tops
- Custom Glass "Wok" Sinks
- Makeup Mirrors
- Quiet Flush Fresh Water Heads
- Large Showers w/Glass Doors & Locker
- Medicine Cabinets w/Mirrors
- Custom Matching Towels

Flybridge

- Full Enclosure
- Adjustable Air Vents in Venturi Wind Screen
- Air Conditioning
- Stidd Helm and Companion Seats
- Richie Powerdamp
- Seating w/Table
- Aft Control Station
- Aft Bench Seat
- Ample Storage

Exclusions

Owner's personal belongings.

Disclaimer

The Company offers the details of this vessel or yacht in good faith but cannot guarantee or warrant the accuracy of this information nor warrant the condition of the vessel. A buyer should instruct his representatives, agents, or his surveyors, to investigate such details as the buyer desires validated. This vessel or yacht is offered subject to prior sale, price change, or withdrawal without notice.

PHOTOS

Aft



Cockpit



Salon Looking Aft



Salon



Salon



Salon



Galley



Dinette



Companionway



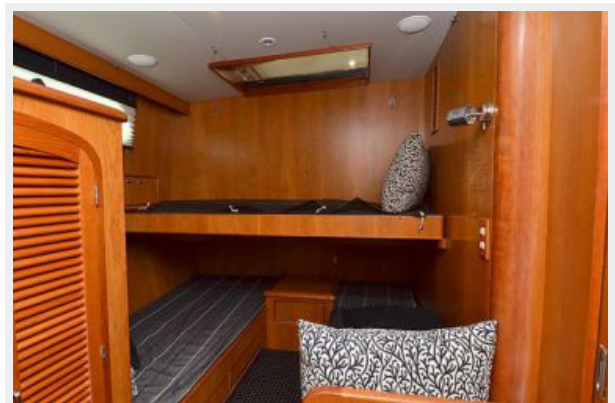
Master Stateroom



Master Stateroom Head



Guest Stateroom



Guest Stateroom Head



Flybridge Looking Forward



Flybridge



Flybridge Aft



Flybridge Seats



Helm



Controls



Flybridge Aft Controls



Forward



Forward Deck



Radar



Top Seating



Tender & Davit



CONTACTS

Andrey Shestakov, leading yacht broker of the sales department of Shestakov Yacht Sales Inc. Shestakov Yacht Sales Inc., the official representative of the Miami/Fort Lauderdale FL headquarters.

Contact details

Email: andrey@shestakovyachtsales.com

Web: shestakovyachtsales.com/en/

Telephones

USA: +1(954)274-4435

Office hours

Monday – Saturday: **9:00 - 21:00** EDT

Sunday: **closed**

Address



Harbour Towne Marina, 850 NE 3rd St,
STE 213, Dania, FL 33004