

PLAYIN HOOKY — OCEAN YACHTS



Builder: [Ocean Yachts](#)

Year Built: 2003

Model: Sport Fisherman

Price: PRICE ON APPLICATION

Location: United States

LOA: 52' 7" (16.03m)

Beam: 16' 4" (4.98m)

Min Draft: 4' 4" (1.32m)

Max Draft: 4' 4" (1.32m)

Our experienced yacht broker, Andrey Shestakov, will help you choose and buy a yacht that best suits your needs **Playin Hooky — Ocean Yachts** from our catalogue. Presently, at Shestakov Yacht Sales Inc., we have a wide variety of yachts available on our sale's list. We also work in close contact with all the big yacht manufacturers from all over the world.

If you would like to buy a yacht **Playin Hooky — Ocean Yachts** or would like help answering any questions concerning purchasing, selling or chartering a yacht, please call **+1(954)274-4435**

TABLE OF CONTENTS

| | |
|--|---|
| TABLE OF CONTENTS | 2 |
| SPECIFICATIONS | 4 |
| Basic Information | 4 |
| Dimensions | 4 |
| Speed, Capacities and Weight | 4 |
| Accommodations | 4 |
| Hull and Deck Information | 4 |
| Engine Information | 5 |
| DETAILED INFORMATION | 6 |
| Electronics, Navigational , Helm | 6 |
| Mechanical/Electrical Equipment | 6 |
| Exclusions | 6 |
| Disclaimer | 6 |
| PHOTOS | 7 |
| Full stern | 7 |
| Starboard profile | 7 |
| Helm | 7 |
| Fore deck from bridge | 7 |
| Stern | 8 |
| Forward bridge seating | 8 |
| Galley with Double drawer Refrigerator and Freezer / Ice Maker and trash compacter | 8 |
| Large Salon and settee | 8 |
| Forward VIP | 8 |
| Additional stateroom | 8 |
| Electrical Panel | 9 |
| Spacious engine room | 9 |
| Starboard Series 60 Detroit | 9 |
| Port Series 60 Detroit | 9 |

| | |
|---------------------------------|----|
| Additional portable water maker | 9 |
| CONTACTS | 10 |
| Contact details | 10 |
| Telephones | 10 |
| Office hours | 10 |
| Address | 10 |

SPECIFICATIONS

Basic Information

Category: Sport Fisherman

Sub Category: Sport Fisherman

Model Year: 2003

Year Built: 2003

Country: United States

Registration #: 1140831

Coast Guard #: Stuart

Vessel Top: Enclosed

Fly Bridge: Yes

Cockpit: Yes

Dimensions

LOA: 52' 7" (16.03m)

Beam: 16' 4" (4.98m)

Min Draft: 4' 4" (1.32m)

Max Draft: 4' 4" (1.32m)

Clearance: 17' 4" (5.28m)

MFG Length: 52' 0" (15.85m)

Speed, Capacities and Weight

Displacement: 56000 Pounds

Water Capacity: 150 Gallons

Fuel Capacity: 850 Gallons

Accommodations

Total Cabins: 3

Hull and Deck Information

Hull Material: Fiberglass

Hull Color: White

Engine Information

Engines: 2

Manufacturer: Detroit Diesel

Model: Series 60

Engine Type: Inboard

Fuel Type: Diesel

DETAILED INFORMATION

Electronics, Navigational , Helm

Garmin GSP 26 depth finder Furuno RD30 Digital depth and speed Garmin 604 High Definition 4' array radar 2 Garmin 7212 touch screen GPS Garmin GHP10 Auto Pilot Danforth High speed Constellation compass One KVH Trac Phone 252 w/satellite antenna

Mechanical/Electrical Equipment

Westerbeke 12.5 KW generator Bow thruster Vestus 3 Electric heads Electric Bilge pumps Microwave oven Refrigerator Deep Freezer 2 Cold plate freezer cockpit Wash machine/ Dryer Oven Air conditioning Hot water heater Water maker Battery Chargers Inverter KVH Tracvision 4 satellite television antenna

Exclusions

Owner's personal belongings.

Disclaimer

The Company offers the details of this vessel or yacht in good faith but cannot guarantee or warrant the accuracy of this information nor warrant the condition of the vessel. A buyer should instruct his representatives, agents, or his surveyors, to investigate such details as the buyer desires validated. This vessel or yacht is offered subject to prior sale, price change, or withdrawal without notice.

PHOTOS

Full stern



Starboard profile



Helm



Fore deck from bridge



Forward bridge seating



Stern



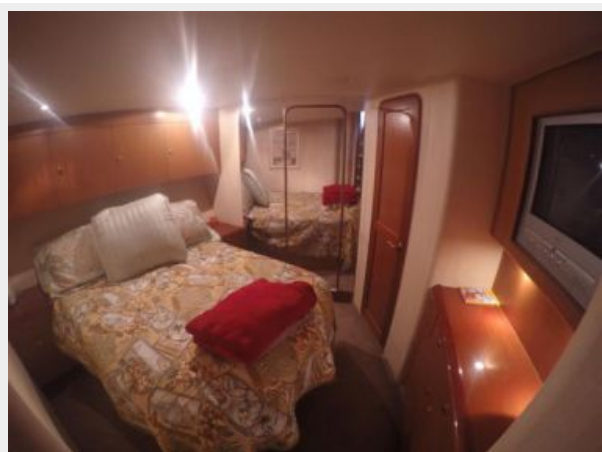
Large Salon and settee



Galley with Double drawer Refrigerator and Freezer / Ice Maker and trash compacter



Forward VIP



Additional stateroom



Electrical Panel



Spacious engine room

Starboard Series 60 Detroit



Port Series 60 Detroit

Additional portable water maker



CONTACTS

Andrey Shestakov, leading yacht broker of the sales department of Shestakov Yacht Sales Inc. Shestakov Yacht Sales Inc., the official representative of the Miami/Fort Lauderdale FL headquarters.

Contact details

Email: andrey@shestakovyachtsales.com

Web: shestakovyachtsales.com/en/

Telephones

USA: +1(954)274-4435

Office hours

Monday – Saturday: **9:00 - 21:00** EDT

Sunday: **closed**

Address



Harbour Towne Marina, 850 NE 3rd St,
STE 213, Dania, FL 33004