

## MY BUDDY — BUDDY DAVIS



**Builder:** BUDDY DAVIS

**Year Built:** 1989

**Model:** Sport Fisherman

**Price:** PRICE ON APPLICATION

**Location:** United States

**LOA:** 47' 0" (14.33m)

**Beam:** 16' 0" (4.88m)

**Min Draft:** 3' 6" (1.07m)

**Max Draft:** 4' 0" (1.22m)

**Cruise Speed:** 21 Kts. (24 MPH)

**Max Speed:** 24 Kts. (28 MPH)

Our experienced yacht broker, Andrey Shestakov, will help you choose and buy a yacht that best suits your needs **MY BUDDY — BUDDY DAVIS** from our catalogue. Presently, at Shestakov Yacht Sales Inc., we have a wide variety of yachts available on our sale's list. We also work in close contact with all the big yacht manufacturers from all over the world.

If you would like to buy a yacht **MY BUDDY — BUDDY DAVIS** or would like help answering any questions concerning purchasing, selling or chartering a yacht, please call **+1(954)274-4435**

# TABLE OF CONTENTS

TABLE OF CONTENTS	2
SPECIFICATIONS	4
Overview	4
Basic Information	4
Dimensions	4
Speed, Capacities and Weight	4
Accommodations	4
Hull and Deck Information	5
Engine Information	5
DETAILED INFORMATION	6
Vessel Walkthrough	6
Exclusions	7
Disclaimer	7
PHOTOS	8
Hull	8
Cockpit with Fighting Chair	8
Cockpit	8
Foredeck	9
Salon	9
Salon Seating	9
Salon	9
Companionway	10
Dinette	10
Galley	10
Master Stateroom	11
Guest Stateroom	11
Top Deck Seating	11
Controls	11

---

Pop-up Console	11
Engine	12
Engine	12
Generator	12
Underwater Light Power	13
Profile	13
<b>CONTACTS</b>	<b>14</b>
Contact details	14
Telephones	14
Office hours	14
Address	14

---

# SPECIFICATIONS

---

## Overview

---

### Basic Information

---

**Category:** Sport Fisherman

**Sub Category:** Convertible

**Model Year:** 1989

**Year Built:** 1989

**Refit Year:** 2013

**Country:** United States

### Dimensions

---

**LOA:** 47' 0" (14.33m)

**Beam:** 16' 0" (4.88m)

**Min Draft:** 3' 6" (1.07m)

**Max Draft:** 4' 0" (1.22m)

### Speed, Capacities and Weight

---

**Cruise Speed:** 21 Kts. (24 MPH)

**Cruise Speed Range:** 350

**Max Speed:** 24 Kts. (28 MPH)

**Water Capacity:** 100 Gallons

**Fuel Capacity:** 760 Gallons

### Accommodations

---

**Total Cabins:** 2

**Sleeps:** 4

**Total Heads:** 2

---

## Hull and Deck Information

---

**Hull Material:** Fiberglass

**Deck Material:** Fiberglass

**Hull Configuration:** Semi Vee

---

## Engine Information

---

**Engines:** 2

**Manufacturer:** Detroit Diesel

**Model:** 8V92TA

**Fuel Type:** Diesel

---

# DETAILED INFORMATION

---

## Vessel Walkthrough

---

MY BUDDY is an immaculate completely refurbished 2013/2014. In the cockpit there is a new fighting chair (there is also a spare in storage). On the bulkhead there is a tackle center and freezer. The salon door is to the port. Entering the salon, starboard side there are new couches on the port and starboard side. The galley is down on the port side, with new granite tops, new stove, sink and refrigerator/freezer. Across from the galley is the dinette with a new varnished teak table. Forward you go down a set of stairs. On the port side there is the guest cabin. This is a bunk room with one bunk that runs forward and aft and one that is side to side. Forward of this is the master state room. This is a queen sized bed, cedar closets, plenty of storage, and an entertainment center with a new Sony CD player. Forward in the boat is the master head and shower. Electronics/Flybridge Garmin GPS/Radar/Plotter 5215 VHF Radio ICOM IC M504 Garmin GPS/Radar/Plotter 3210 Simrad Auto Pilot AP25 Satellite CD/Radio Marine Grade with Bose Speaker & Subwoofer Helm with single lever engine controls Two new teak helm chairs with footrests Bridge deck is Awlgrip white nonskid (new 2014) Strataglass Enclosures (new 2014) Electronically actuated console at the helm for safe electronics Pipewelder Bimini top with new vinyl cover, Rupp gold tip outriggers Two flood lights are mounted on the underside of the tower standing platform facing the cockpit Ocean LED night running light on electronics box Tower helm station single lever controls, fiberglass helm console, stainless steering wheel and a custom vinyl cover New Maxwell anchor control with new wrapping drum and bow sprint Cockpit Features Glendinning single lever control/back down station Teak covering boards, teak coaming with 6 rocket launchers (new 2014) Fighting chair (new 2014) Fresh and Saltwater Washdown systems Cockpit bait freezer Teak tackle center Underdeck fish box Large tuna door 6 new 2014 underwater Ocean LEDs in cockpit with separate battery bank with 4 D8 batteries custom installed under dinette seat with separate breaker panel Main Salon Galley Down Configuration give her a large and open salon Teak cabinetry including Corian counter Teak and holly floor White headliner with recessed lighting and stereo speakers. "L" shaped sofa is at starboard recovered beige leather (2014) Corian covered corner unit Salon entertainment system Teak blinds (new 2014) Galley "U" shaped galley 3 steps down from the salon to starboard Teak and holly flooring Corian counter tops with undermounted stainless steel sink Ceramic cook top, Princess single burner Refrigerator/freezer (new 2014) GE Monogram series Microwave oven (new 2014) Master Stateroom Full queen berth with memory foam mattress (new 2014) Wall covering, faux leather (new 2014) Mirrored cabinets to starboard conceal a large cedar-lined hanging locker. Dimmer controlled lighting, his/her reading lights new LEDs, and a dedicated Cruiseair A/C unit. Master head has a private entrance from the master stateroom and is located forward Vacuum Flush head and separate shower. Guest Stateroom Stacked bunks with memory foam mattress (new 2014) Cedar Hanging Locker Dedicated Cruiseair A/C unit Reading lights with dimmer Guest head with vacuum flush head, teak and holly flooring and separate shower New overhead and wall covering (2014) Additional Equipment Glendinning Electronic Controls Engine Room Gauge Package Engine Room Start & Stop Switches Westerbeke 15 kw Generator Oil Change System Fuel Priming Pumps Hydraulic Steering

Automatic Fire Extinguishing System High Volume Bilge Pumps with Alarms Bilge Blowers Trim Tabs Stainless Steel Rudders Water Heater Water Filtration System Centralized Draining System Coolant Recovery System Broker Comments MY BUDDY is possibly the best example of a complete "bow to stern" refurbishment. Within the last 24 months, the yacht has had new Awlgrip paint with custom fighting yellow hull and white super structure. Engines completely rebuilt with only 70 hours SMOH. New interior including cabinetry counter tops and soft goods. The Owner's change of plans has resulted in MY BUDDY being offered reluctantly for sale.

---

## Exclusions

---

Owner's personal belongings.

---

## Disclaimer

---

The Company offers the details of this vessel or yacht in good faith but cannot guarantee or warrant the accuracy of this information nor warrant the condition of the vessel. A buyer should instruct his representatives, agents, or his surveyors, to investigate such details as the buyer desires validated. This vessel or yacht is offered subject to prior sale, price change, or withdrawal without notice.

# PHOTOS

Hull



Cockpit with Fighting Chair



Cockpit





### Foredeck



### Salon



### Salon Seating



### Salon



**Dinette**



**Companionway**



**Galley**



### Master Stateroom



### Guest Stateroom



### Top Deck Seating



### Controls



### Pop-up Console







Engine



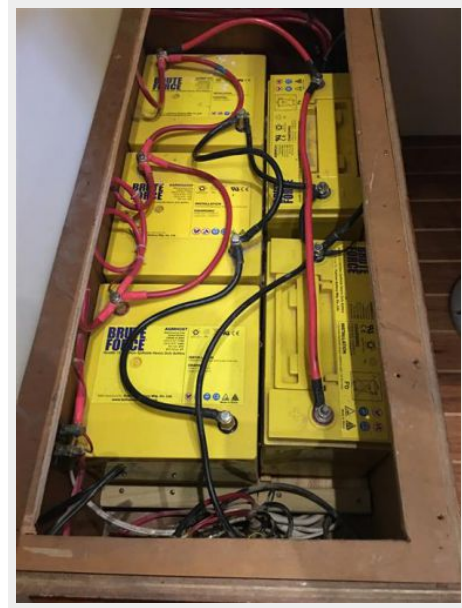
Engine



Generator



### Underwater Light Power



### Profile



---

# CONTACTS

---

Andrey Shestakov, leading yacht broker of the sales department of Shestakov Yacht Sales Inc. Shestakov Yacht Sales Inc., the official representative of the Miami/Fort Lauderdale FL headquarters.

---

## Contact details

---

Email: [andrey@shestakovyachtsales.com](mailto:andrey@shestakovyachtsales.com)

Web: [shestakovyachtsales.com/en/](http://shestakovyachtsales.com/en/)

---

## Telephones

---

USA: +1(954)274-4435

---

## Office hours

---

Monday – Saturday: **9:00 - 21:00** EDT

Sunday: **closed**

---

## Address

---



Harbour Towne Marina, 850 NE 3rd St,  
STE 213, Dania, FL 33004