

## BERING 65 — BERING YACHTS



**Судостроитель:** BERING YACHTS

**Год постройки:** 2015

**Модель:** Моторная яхта

**Цена:** **ЦЕНА ЯХТЫ ПО ЗАПРОСУ**

**Местонахождение:** China

**Длина общая:** 63' 3" (19.28m)

**Ширина:** 20' 0" (6.10m)

**Макс. осадка:** 6' 0" (1.83m)

**Крейс. скорость:** 8 Kts. (9 MPH)

**Макс. скорость:** 10 Kts. (12 MPH)

Купить Bering 65 — BERING YACHTS а также выбрать подходящую вам яхту из нашего каталога яхт вам поможет опытный яхтенный брокер Андрей Шестаков. На сегодняшний день компания Shestakov Yacht Sales Inc. имеет большое количество яхт в собственном списке продаж, а также тесно сотрудничает со всеми крупными яхтенными производителями по всему миру.

Для того чтобы купить яхту Bering 65 — BERING YACHTS а также проконсультироваться по любому вопросу связанному с покупкой, продажей, чартером яхт позвоните по телефону **+7(918)465-66-44**.

# ОГЛАВЛЕНИЕ

ОГЛАВЛЕНИЕ	2
ХАРАКТЕРИСТИКИ	4
Обзор	4
Основная информация	4
Размеры	4
Скорость, вместимость и масса	5
Размещение	5
Корпус и палуба	5
Информация о двигателе	5
ПОДРОБНОЕ ОПИСАНИЕ	6
Engine	6
Accommodations	6
Crew Quarters	13
Electrical System	14
Safety & Fire Protection	19
Fuel & Water System	20
Airconditioning, Heating, Ventilation Systems	23
Hydraulic Sytsem	23
Insulation	23
Miscellaneous	24
Исключения	24
Отказ от ответственности	24
ФОТОГРАФИИ	26
Sistership	26
КОНТАКТЫ	28
Контактная информация	28
Телефоны	28
Время работы	28

---

Адрес

28

# ХАРАКТЕРИСТИКИ

## Обзор

The BERING 65 is an exceptional long-range trawler in the Expedition Series. As the series name implies, she possesses the "traditional" trawler look now so familiar to the recreational marine market. But while the BERING 65 may share a similar aesthetic to other traditional looking trawlers, that's where the similarities end. This heavy displacement motor yacht, with a hull form derived from the proven ocean going commercial trawler, excels in the areas that matter most. She has a sea-kindly motion in heavy weather, reliability and ultimate seaworthiness of design.

BERING 65 is a rugged pilothouse yacht with the brawn to make any ocean passage while providing a truly relaxing and even pampered quality of life thanks to her three spacious staterooms plus additional crew quarters. With an incredible range of 5000 miles no destination is out of reach. If you're feeling the call of the endless miles of pristine coastline and the vast stretches of blue open ocean that are the world's cruising grounds, this yacht is for you.

## Основная информация

**Тип судна:** Моторная яхта

**Подкатегория:** Expedition

**Модельный год:** 2015

**Год постройки:** 2015

**Страна:** China

**Открытая палуба мостика:** Да

## Размеры

**Длина общая:** 63' 3" (19.28m)

**Длина по ватерлинии:** 59' 0" (17.98m)

**Ширина:** 20' 0" (6.10m)

**Макс. осадка:** 6' 0" (1.83m)

**Трапы:** 32' 8" (9.96m)

## Скорость, вместимость и масса

---

**Крейс. скорость:** 8 Kts. (9 MPH)

**Крейсерская скорость поворота:** 5000 Kts.

**Макс. скорость:** 10 Kts. (12 MPH)

**Вместимость воды:** 400 Gallons

**Объем топливного бака:** 4500 Gallons

## Размещение

---

**Всего кают:** 3

**Всего коек:** 6

**Спальные места:** 6

**Всего ком. состава:** 3

**Каюты экипажа:** 1

**Койки экипажа:** 2

**Спальных мест экипажа:** 2

**Комм. состав экипажа:** 1

## Корпус и палуба

---

**Материал корпуса:** Steel

**Цвет корпуса:** Capri Blue/Snow White

## Информация о двигателе

---

**Двигатели:** 2

**Производитель:** Cummins

**Модель:** QSL-9-

**Тип двигателя:** Inboard

**Тип топлива:** Diesel

---

# ПОДРОБНОЕ ОПИСАНИЕ

---

## Engine

---

Two main diesel engines Cummins QSL-9— 285 HP commercial marine, M1 rated. Total power 570 HP. Two twin engine GLENDINNING engine controls (pilot house and fly bridge). Dual engine color display in the PH and FB

TwoZF-W325, 3.98:1 gear box with live PTO for hydraulic pumps

Two Seatorque shafts with flexible Cardan joint

Two ZF five blade 44/40 NiBrAl propellers

Two Centecmufflers/separators withDE ANGELO EXHAUST mixers. Exhaust outlets on port and starboard sides of the transom

Two RACOR 75/1000 dual fuel filters for the main engines

Two 2 " sea water strainers for main engines cooling system

Six ports ½" REVERSO fuel manifold

## Accommodations

---

### MASTER STATEROOM

Wood flooring

Queen size bed, 2000X1600 mm

Storage under the bed

Kick board light, amber LED

Two reading lights over the bed

Overhead direct dimmable LED lights

Four double 220 V recepticals

12000 BTU A/C unit

Hatch to the bilge storage area with ladder

Bilge storage area equipped with insulation, flooring, shelves and heater

Night stands with drawers

Two wardrobs with upper cabinets

Dresser on each side of the bed

Casketed door to the head

Corner chairs, cushioned, fixed

Large mirror above the headboard of the bed

Mirror on the entry door

Japanese screens on each side, covering potholes

Door to companionway

Smoke alarm

CO alarm

Fire extinguisher

## **MASTER HEAD**

Ceramic tile flooring

Ceramic tile walls

Microfiber ceiling

Overhead direct dimmable LED lights

220 v covered receptical

Vanity with granite countertop

SS premium faucet

Mirrors above vanity

Ventilation fan

Tall cabinet/linen closet

Electrical toilet, SeaLand 8700 series

Electric floor heating with control unit

Electric towel dryer

Glass door shower area



Storage shelves

Smoke alarm

Fire extinguisher

## **GUEST STATEROOM, STARBOARD**

Queen size bed

Reading lights

Overhead direct dimmable LED lights

Kick board light, amber LED

2double receptacles 220 v.

Desk

9000 BTU A/C unit

Large wardrobe and cabinets with a mirror

Bed stands

SS porthole

Wood paneling

Teak flooring

Microfiber selling

Casketed door to companionway

Smoke alarm

CO alarm

Fire extinguisher

## 1. GUEST HEAD

Ceramic tile flooring

Ceramic tile walls

Microfiber ceiling

Overhead direct dimmable LED lights

220 v covered receptical

Porthole

Vanity with granite countertop

SS premium faucet

Ventilation fan

Electrical toilet, SeaLand 8700 series

Electric floor heating with control unit

Electric towel dryer

Glass doors for shower area

Shower head

Storage shelf for shampoo, towel, etc

Smoke alarm

Fire extinguisher

### **GUEST STATEROOM, PORT**

Queen size bed

Pullman bed

Reading lights

Overhead direct dimmable LED lights

Kick board light, amber LED

2 double receptacles 220 v.

9000 BTU A/C unit

Large wardrobe and cabinets with a mirror

Desk

SS porthole

All furniture made of wood paneling

Wood flooring

Microfiber selling

Casketed door to companionway

Smoke alarm

CO alarm

Fire extinguisher

## **GUEST HEAD, PORT**

Ceramic tile flooring

Ceramic tile walls

Microfiber ceiling

Overhead direct dimmable LED lights

220 v covered receptical

Porthole

Vanity with granite countertop

SS premium faucet

Ventilation fan

Electrical toilet, SeaLand 8700 series

Glass doors for shower area

Shower head

Storage shelf

Electric floor heating with control unit

Electric towel dryer

Smoke alarm

Fire extinguisher

## **Crew Quarters**

---

Microfiber wall and ceiling paneling

Wood flooring

Head with sink, shower, SeaLand 8900 series electrical toilet

Storage cabinets and lockers

Settee with hi/low table and pullman bunk bed

Overhead direct dimmable LED lights

Kick board light, amber LED

Reading lights

2 double AC 220 V recepticals

Smoke alarm

CO alarm

Fire extinguisher

---

## Electrical System

---

### 1. MAIN FEATURES

System designed and built to ABYC electrical standards and in compliance with CE requirements:

- 220 V 60Hz AC power
- 24V DC main power
- 12V DC electronics power

Main distribution 220 V AC and 24 V DC electrical panels, inverters, chargers, batteries and battery management panels are located in the utility room

Secondary 24 V DC and 12 V DC panels are located in the pilot house

All wires run inside a PVC tube or PVC wire loom, each wire to have its own jacket

All wires marked and color coded

All wire connections are insulated

All hardware bonded to hull

Dedicated circuit breaker for each circuit

Power selector switches

Power outlets throughout, GFCI outlets in wet areas

## **b. POWER SOURCE**

### **Generators**

4 cylinders Onan MDKBT - 22.5 KW, 220 V, 50 Hz with sound shield, muffler and exhaust separator

4 cylinders Onan MDKBT - 22.5 KW, 220 V, 50 Hz with sound shield, muffler and exhaust separator

Digital display on the generators and in the pilot house

Safety automatic shutdown with diagnostic indicator

Racor 75/1000 fuel filters

### **Alternators**

Two 60 A alternators on the main engines for charging starting battery bank under way

### **Shore power**

---

Two Glendinning cablemasters with 30 meters of cable, 50 A , 220 V , 50 Hz one phase

A/C Power frequency converter 15 KVA

Two 50 A shore power breakers

### **Inverters**

Tree Victron 5 KW inverters, 220 V, 50Hz

### **Batteries**

High quality AGM type, deep cycle, 12V DC batteries, DISCOVER

Two 230 A/h AGM type batteries for engines start, with cross over switch, parallel for 24V DC

Two 230 A/h AGM type batteries for generators start

Twelve 230 A/h AGM type batteries for house and electronics

One Victron 50 A charger for bow and stern thruster

All batteries secured and covered

All starting batteries charged by engine or generator driven alternators

House batteries charged by alternators on the main engines, or by chargers from generator and/or shore power.

Two Victron 24 V DC to 12 V DC 50 A converters located in the pilot house

Three Victron 100 A chargers 24 V DC for charging of house battery bank from generators or shore power



Battery switches located in the electrical room

### **c. LIGHTING SYSTEM and POWER OUTLETS**

All lights 24v DC powered

LED lights for ceiling lights, robe lights and curticy lights

LED water proof lightsfor the exterior

Ten 140 W halogen deck flood lights

LED rope lights and courtesy lights for selected areas

Four LED lights for engine room 60 W each

Two220 V AC fluorescent lights for engine room

Six LED underwater lights

LED red ceiling lights in selected areas

LED amber chart lights in the pilot house

Search light

220 V AC forward facing flood light 350 W

220 V AC receptacles in all rooms

#### d. CONTROLS AND ALARMS

Digital generators panels with start/stop buttons in the pilot house

Main engines twin throttle control in the pilot house and fly bridge

Main engines LCD displays in the pilot house and fly bridge

Marinco ship monitoring system with all tank sensors, high bilge water sensors, weather station

Main engines displays in the pilot house and fly bridge

Main engines dual Racor fuel filter pressure gauge

Hydraulic steering station in the pilot house and fly bridge

Hydraulic bow and stern thrusters controls in the pilot house and on fly bridge

Bilge pumps manual/auto switches

Bilge pump display with “on” lights and sound alarms

High bilge water level alarm

5 windshield wiper controls in the pilot house

Windshield electrical heating control

1 windshield wash down control in the pilot house

Search light switch with remote control unit in the pilot house

Horn switch in the pilot house and on fly bridge

6 fuel tanks level gauges

1 fresh water level gauge

1 grey water level gauge

1 black water level gauge

Sight glass for day tanks, two main tanks and water tank

Central CO alarm signal

Central smoke alarm signal

Engine room fire alarm

---

## **Safety & Fire Protection**

---

Fireboy automatic (with manual deploy control outside of the engine room) fire extinguisher system in engine room with engines, generator and ventilation shut off

Engines, generators, fans shut off switch for the fire system

Fireboy automatic (with manual deploy control outside of the utility room) fire extinguisher system in utility room

Smoke detectors in all rooms

CO detectors in all staterooms, utility room and engine room

Fire extinguishers in all rooms

## Fuel & Water System

---

### FUEL SYSTEM

4 integrated fuel tanks 4200 gal

Fueling station with four ports on starboard side

2 day fuel tank 160 gal each

Electric level sensors in all tanks

Visual fuel gages in day tanks and two main tanks

Fuel intake manifold with 1/2" hoses

Fuel outflow manifold with 1/2" hoses

"Reverso" 120 V AC fuel transfer pump

"Reverso" 210 gal/hour fuel polishing and transfer system

"Alfa Laval" MIB -303 fuel separator

Auxiliary manual fuel transfer pump

Central fueling station connected to 3 main tanks with 2" steel pipe

All engines and generator feeding off the day tanks

Main engines equipped with dual Racor filters 75/1000 with pressure gage

Racor filter for generators.

## **FRESH WATER SYSTEM**

Integrated water tank 400 gal, painted with enamel used for drinking water tanks

Water tank inspection hatch, shut off valves, 1 1/2" water intake hose

Two 24 V DC fresh water pump, Sureflow, 45 psi, 6.5 gal per minute

5 gal pressure tank

UV water filter

Two Raritan 20 gallons electric/exchanger water heaters with circulation pump

Cold water manifold in the main bilge

Trident aluminum reinforced cold water 1/2" PVC hoses rated for drinking water

Hot water manifold in the main bilge

Trident aluminum reinforced hot water 1/2" PVC hoses rated for hot water

Dometic 2200 gallons/day water maker

Dometic water purifier "Spot Zero"

## **BLACK WATER SYSTEMS**

200 gal integrated black water tank with level indicator, 1 overboard macerator pump, shore pump out. Tank painted inside with enamel for aggressive substances

Deck pump-out fitting

Overboard discharge with seacock

Two macerator pumps for overboard discharge

Manual pump for overboard discharge

## **GREY WATER SYSTEMS**

200 gal integrated grey water tank with level indicator, 1 overboard pump, shore pump out. Tank painted inside with enamel for aggressive substances

Deck pump-out fitting

Overboard discharge with seacock

Two macerator pumps for overboard discharge

Manual pump for overboard discharge

## **SEA WATER SYSTEM**

Engines, generators, water maker, air conditioner sea water sea cocks and strainers

Sea chest, integrated to the hull

Sea water intake with 2" strainers for engines, 1" for generators, 1 ½" for air conditioner, 1" for the water maker

SS and bronze thru hull fittings and sea cocks

---

## Airconditioning, Heating, Ventilation Systems

---

Child water air-conditioning system with two 4 tons compressors, 100000 BTU

Electric floor heating in master and two guest heads

24 V DC fan in each head

Engine room air intake has two air blowers and two air blowers for outflow

Lazarette air intake has one air blowers and one air blowers for outflow

---

## Hydraulic Sytsem

---

2 manual hydraulic steering pump

1 DC hydraulic power steering unit Teleflex1000

Hydraulic manifold with oil tank, two PTOs on main engines

Hydraulic motors on MUIR 4000 windlasses

Hydraulic bow and stern thrusters 26.4 HP

All hydraulic equipment connected with high pressure flexible hydraulic hoses

Gyro stabilizer "Seakeeper" M34/40

---

## Insulation

---

Engine room insulated with 4" composite insulation per Bering drawings

Aluminum perforated panel for ceiling and walls in engine room

Engines exhaust pipes wrapped and finished with carbon fiber covers

Composite sound insulation between engine room and living quarters

All bulkheads, ceiling, hull sides have acoustic and thermal insulation as per Bering drawings

All insulation materials are fire resistant.

## Miscellaneous

---

Owner's manual in English language

Set of drawings for all vessel systems

Set of warranty certificates

Set of material and equipment manuals, certificates

Tool box

Spare parts provided by manufacturers of equipment

## Исключения

---

При продаже яхты исключаются личные вещи владельца.

## Отказ от ответственности

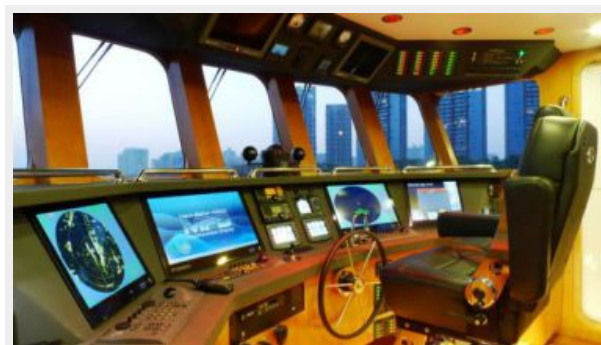
---

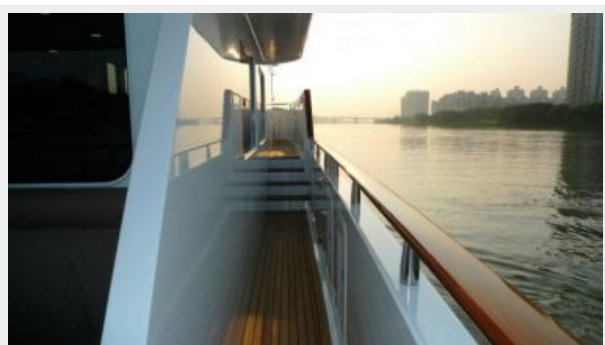


Компания предоставляет описание судна или яхты добросовестно, но не может гарантировать точность этой информации, а также не ручается за техническое состояние. Покупатель должен проинструктировать своих агентов или оценщиков исследовать представленную информацию более подробно, по собственному желанию. Продажа судна или яхты, изменение цены или снятие с продажи будет происходить без предварительного уведомления.

# ФОТОГРАФИИ

## Sistership





# КОНТАКТЫ

---

Андрей Шестаков (Andrey Shestakov) – ведущий яхтенный брокер отдела продаж яхт и судов компании Shestakov Yacht Sales Inc. Официальный представитель Shestakov Yacht Sales Inc. для русскоговорящих клиентов в центральном офисе компании в Майами/Форт Лодердейл/Флорида/США.

## Контактная информация

---

Email: [andrey@shestakovyachtsales.com](mailto:andrey@shestakovyachtsales.com)

Web: [shestakovyachtsales.com](http://shestakovyachtsales.com)

## Телефоны

---

Краснодарский край: **+7(918)465-66-44**

США, Майами, Флорида: **+1(954)274-4435**

## Время работы

---

Понедельник – Суббота: **9:00 - 21:00**  
EDT

Воскресенье: **Закрито**

## Адрес

---



Harbour Towne Marina, 850 NE 3rd St,  
STE 213, Dania, FL 33004