

FANCI NANCI — HATTERAS



Судостроитель: HATTERAS

Год постройки: 2002

Модель: Моторная яхта

Цена: ЦЕНА ЯХТЫ ПО ЗАПРОСУ

Местонахождение: United States

Длина общая: 63' 0" (19.20m)

Ширина: 18' 3" (5.56m)

Мин. осадка: 4' 10" (1.47m)

Макс. осадка: 5' 0" (1.52m)

Крейс. скорость: 25 Kts. (29 MPH)

Макс. скорость: 30 Kts. (35 MPH)

Купить **FANCI NANCI — HATTERAS** а также выбрать подходящую вам яхту из нашего каталога яхт вам поможет опытный яхтенный брокер Андрей Шестаков. На сегодняшний день компания **Shestakov Yacht Sales Inc.** имеет большое количество яхт в собственном списке продаж, а также тесно сотрудничает со всеми крупными яхтенными производителями по всему миру.

Для того чтобы купить яхту **FANCI NANCI — HATTERAS** а также проконсультироваться по любому вопросу связанному с покупкой, продажей, чартером яхт позвоните по телефону **+7(918)465-66-44**.

ОГЛАВЛЕНИЕ

ОГЛАВЛЕНИЕ	2
ХАРАКТЕРИСТИКИ	5
Основная информация	5
Размеры	5
Скорость, вместимость и масса	5
Размещение	5
Корпус и палуба	6
Информация о двигателе	6
ПОДРОБНОЕ ОПИСАНИЕ	7
Walkthrough	7
Salon	7
Galley	8
Pilothouse	8
Companionway	9
Master Cabin	10
Master Head	10
Guest Head/Day Head	10
Guest Cabin	11
VIP Cabin	11
VIP Head	11
Foredeck	12
Aft Deck	12
Swim Platform/Sport Deck	13
Flybridge	13
Helm Area	14
Boat Deck Area	14
Tender	14
Engine Room	15

Lazarette Crew Stateroom	16
Electrical	16
Remarks	17
Exclusions	17
Disclaimer	17
Исключения	17
Отказ от ответственности	18
ФОТОГРАФИИ	19
Salon Looking Forward	19
Salon Looking to Starboard	19
Salon Looking Aft to Port	19
Galley Looking Forward	19
Galley Looking to Port	19
Pilothouse Looking to Port	19
Pilothouse Looking Aft	20
Pilothouse Helm	20
Main Companionway Laundry Area	20
Master Looking Aft	20
Master Looking to Port	20
Master Looking to Starboard	20
Master Head	21
Master Looking Forward	21
Master Tub/Shower	21
Starboard Guest Cabin	21
Forward VIP	22
VIP Looking to Starboard	22
VIP Head	22
Foredeck	22
Spacious Side Decks	23

Bow Seat	23
Aft Deck	23
Flybridge Seating	23
Flybridge Helm	23
Engine Room Looking Forward	23
Bow	24
Port Engine	24
Stern	24
Alternate Profile	24
КОНТАКТЫ	25
Контактная информация	25
Телефоны	25
Время работы	25
Адрес	25

ХАРАКТЕРИСТИКИ

Основная информация

Тип судна: Моторная яхта

Модельный год: 2002

Год постройки: 2002

Страна: United States

Верх: Hardtop

Открытая палуба мостика: Да

Размеры

Длина общая: 63' 0" (19.20m)

Ширина: 18' 3" (5.56m)

Мин. осадка: 4' 10" (1.47m)

Макс. осадка: 5' 0" (1.52m)

Скорость, вместимость и масса

Крейс. скорость: 25 Kts. (29 MPH)

Дальность на крейсерской скорости:
275

Макс. скорость: 30 Kts. (35 MPH)

Водоизмещение: 110000 Pounds

Чистый вес: 55 Pounds

Вместимость воды: 280 Gallons

Вместимость сточного бака: 100 Gallons Объем топливного бака: 1290 Gallons

Размещение

Всего кают: 3

Всего коек: 4

Спальные места: 6

Всего ком. состава: 3

Каюты экипажа: 1

Койки экипажа: 2

Комм. состав экипажа: 1

Корпус и палуба

Материал корпуса: Fiberglass

Материал палубы: Fiberglass

Комплектация корпуса: Semi Vee

Дизайнер корпуса: Hargrave

Дизайнер экстерьера: Hatteras

Дизайнер интерьера: Hatteras

Информация о двигателе

Двигатели: 2

Производитель: Caterpillar

Модель: 3412E

Тип двигателя: Inboard

Тип топлива: Diesel

ПОДРОБНОЕ ОПИСАНИЕ

Walkthrough

Entry to the yacht is easy onto the swim platform from a floating dock and up three fiberglass steps onto the Aft Deck or via a Marquipt Tide Ride ladder on both the port or starboard side of the Aft Deck.

The Aft Deck has built in seating, a teak table, ladder to the Flybridge and a sliding entry door into the Salon.

The Salon has a large U shaped sofa with a mahogany hi low table between on the portside. To starboard is a custom bar area and a custom pop up TV.

Next forward is the complete Galley also in a U shape configuration to port.

Up two steps to starboard is the very large Pilothouse with seating and a table. The Helm is centerline.

The accommodation steps to below are to starboard with the yacht's Laundry Center along the way.

The Master Cabin is aft with a modified king size berth, private Head with a tub/shower.

Next forward to port is the Guest Head with a stall shower with the Guest Cabin across the Companionway to starboard.

Furthest forward is the VIP with a centerline queen and a private Head with a stall shower.

Up an open tread stair from the Pilothouse is the fully air conditioned Flybridge with a full Helm Station, ample seating and a bar.

The Boat Deck with crane is aft. Access to the large Engine Room is via a hatch in the Salon sole.

Salon

The Salon is entered via a sliding stainless steel entry door slightly to starboard. Immediately upon entering is a Corian countertop with a drawer, a storage cabinet (where there was once an icemaker), a very large lighted mirrored liquor cabinet where the tube TV was, and a pop up 32" LCD Samsung TV that disappears behind the bar.

Next forward is the entertainment electronics cabinet which includes a Yamaha RX496 stereo receiver, a Phillips SAT TV receiver, a Phillips DVD player and a Bose amplifier for the Salon sound/TV system.

To port is a very large U shaped settee newly recovered in leather (\$10,000) in 2011. The entire settee has storage below. Between the U of the sofa is a drop leave highly varnished cocktail/dining table.

The overhead has a two tone Whisper Wall vinyl finish with 20 halogen mini spots, two stereo speakers and a Bose five channel stereo system with a hidden subwoofer. The large side windows have satin finished wood blinds that contrast nicely with the high gloss mahogany joinery. There is also a carpeted sole, a corner cabinet aft to starboard and a small table lamp in the forward corner of the sofa.

Galley

The Galley is next forward and completely open to the Salon. It is U shaped to port and has a two level Corian countertop that shields most items from the aft from the Salon.

Equipment in the Salon includes:

- Amtico planked sole w/a Compass Rose inlay
- (2) Sub Zero refrigerator drawers
- (2) Sub Zero freezer drawers
- Under mount stainless steel sink
- Removable single lever spray faucet
- Glass front wine cooler (new 2013)
- Whirlpool 4 burner Ceran top cook top
- Sharp Carousel convection/microwave oven w/work light & exhaust fan
- Insinkerator disposal
- Head Hunter tank Sentry LED water tank gauge
- Head Hunter tank Sentry LED waste tank gauge
- Pegged dishware storage
- (12) Mahogany cabinet doors
- (4) Mahogany drawers
- (12) Overhead halogen mini spots
- (4) Custom bar storage cabinets to starboard side

Pilothouse

The Pilothouse Area is very generous and allows for great visibility if one prefers to run the boat from the Lower Station.

The Pilothouse is two steps up from the Galley. Immediately to port from the entranceway is an open tread six step stair to the Flybridge through a dogable door. A side deck access Pantograph door is next forward. Aft in the Pilothouse is an L shaped settee for four to five people with a Corian countertop that matches that in the Galley. Outboard to port is a shelf with

two cabinets, a drawer, a Corian top and a table lamp. The helm itself is L shaped with the wheel on centerline. The following equipment is at the Lower Helm:

- Furuno Nav Net 10" plotter/depth
- Furuno Nav Net 10" radar
- Furuno GP 36 GPS Navigator
- Clarion M 5675 AM/FM/CD stereo
- Icom M 504 VHF w/DSC
- Icom M 504 VHF w/DSC
- Furuno RD 30 digital depth/speed/water temp
- Simrad Robertson AP 22 autopilot
- American Bow Thruster joy stick thruster control
- Trim tab controls
- Tilt wood Momo helm wheel
- Full analog gauges
- Sturdy electronic clutch/throttle controls, single lever
- North Star 6100i 3D plotter
- (2) CAT digital engine alarm displays
- (3) Windshield wiper/washers
- Naiad stabilizer controls (digital)
- Clarion stereo remote
- RCL 100 Point Pad searchlight control
- MMI 110 Hatteras Systems alarm
- Start/stop buttons
- (3) Bilge pump controls
- Windlass controls
- Fuel transfer pump controls
- (2) Fuel tank gauges day tank & other w/selector
- 5" Ritchie magnetic compass
- (2) Storage cabinets
- (2) Access doors to under Helm Area
- (2) Black leather Tracey adjustable helm seats
- Amtico planked sole
- (3) Overhead red night Navigation lights
- (10) Overhead mini spots
- (2) Overhead stereo speakers
- VDO rudder angle indicator
- Carbon fiber dash panels

Companionway

From the starboard side of the Pilothouse are seven carpeted steps with carpet runners to the accommodations below. About half way down in the tambour lined walls is a cabinet accessing

the Whirlpool Thin Twin separate washer/dryer stacked Laundry Center.

At the base of the stairs, one can go aft into the Master Cabin through double arched mahogany doors. To port into the Guest/Day Head. To starboard into the Guest Cabin or forward into the VIP. This area is protected with a carpet runner and has three overhead halogen mini spots above.

Master Cabin

Entered via twin arched doors and one step down is the Master Cabin. The king size berth is off the portside bulkhead athwartships. The berth has an upholstered headboard, rope lighting below around the perimeter and lift up storage below. Either side of the berth are three drawer nightstands with table lamps above. Behind the berth are Roman shades covering a large stainless porthole for ventilation or escape. Aft of the berth is a chest of eight drawers with a mahogany countertop. Above the bulkhead is mirrored with artwork affixed in the center. Further inboard is an arched top two door hanging locker with cedar lining, an auto light and digital AC controls within.

Next forward on the starboard side of the cabin is the entrance to the Master Head followed by eight more drawers also with a mahogany countertop and mahogany bulkhead above. Further forward is the Entertainment Area with Sony 19" WEGA LCD TV, a Yamaha RX 496 stereo receiver, a Yamaha CDC 675 six disc CD player and a Samsung DVD player. Below is a single drawer and two cabinet doors. Also in this cabin are ten overhead halogen mini spots, rope lights behind the outboard valance, stereo speakers and a carpet runner.

Master Head

The Master Head is outboard to starboard and is very well appointed. The sole is planked Amtico. The mahogany vanity has two covered cabinet doors below the bow front Avonite countertop with a Corian under mount sink and a single lever faucet above.

Three mirrored doors above offer medicine cabinet storage. The toilet is a Vacuflush model. The stall shower/tub is all fiberglass and includes a wall mounted or handheld fixture, a large opening stainless steel porthole, a light, an exhaust fan and a clear tempered glass sliding door. Also in the Head is a mirrored overhead, five halogen mini spots and an AC vent.

Guest Head/Day Head

On the portside of the Companionway across from the stairs is the Guest Head which also serves as the Day Head. The sole is planked Amtico flooring. The bow front vanity has two cabinet doors below and a Corian countertop above with a flush mount sink with single lever faucet above. Two mirrored cabinet doors above serve as medicine cabinet. The stall shower has a

round acrylic sliding door, a handheld or wall mountable fixture, an opening stainless steel porthole and a light. Also in the Head is a Vacuflush toilet, a mirrored overhead with three halogen overhead mini spots, an AC vent and an arched entry door.

Guest Cabin

On the starboard side of the Companionway is the Guest Cabin with twin berths in an over under arrangement along the outboard bulkhead. There is a single drawer under the lower berth. Each berth has a reading light. A nightstand is inboard with two cabinet doors below. The entire aft bulkhead is mirrored. A 15" Phillips TV is mounted on the aft bulkhead. A wood storage cuddy is at the head of the upper berth with an opening stainless steel porthole above the upper berth. Forward is a mirrored door hanging locker with cedar lining, an auto light and the cabin's digital AC controls within. Overhead are three halogen mini spots and two stereo speakers. A DVD player is hidden within the cabinet next to the berth.

VIP Cabin

All the way forward is the VIP Cabin with a centerline tapered queen size berth. There is a large storage area under the berth via hinged access.

An upholstered headboard is forward with a mirrored panel above with centered artwork.

Two dedicated halogen reading lights are above the berth flanking an open deck hatch with a sliding shade and screen.

Built in shelves both port and starboard serve as nightstands.

Aft on both port and starboard sides are cedar lined hanging lockers.

A built in 15" Phillips LCD is built in to starboard on the aft bulkhead.

Aft is the entrance to the VIP Head.

VIP Head

Accessed only from the VIP is the VIP Head.

The sole is planked Amtico flooring. The bow front vanity has two cabinet doors below and a Corian countertop above with a flush mount sink with single lever faucet above. Two mirrored cabinet doors above serve as medicine cabinet.

The stall shower has a round acrylic sliding door, a handheld or wall mountable fixture, an opening stainless steel porthole and a light.

Also in the Head is a Vacuflush toilet, a mirrored overhead with three halogen overhead mini spots, an AC vent and an arched entry door.

Foredeck

- Fiberglass non-skid decks
- 70 lb. Stainless steel plow anchor w/290' chain
- Maxwell 2200 electric anchor windlass
- Up & down foot switches for windlass
- Welded stainless steel bow rail
- Welded bow pennant staff
- Bomar Foredeck hatch
- (2) Bow cleats & chocks
- (4) Spring line cleats
- Removable Foredeck sun pad
- (6) Drink holders at sun pad
- Stainless steel handrails at sun pad
- Deck pump out for waste tank
- Stainless steel house handrails, port & starboard
- ACR RCL 100 searchlight on bridge superstructure
- Khalenberg dual trumpet air horns on bridge superstructure
- Starboard side deck Pantograph door to Wheelhouse
- Rail break at starboard side boarding door
- Marquipt Tide Ride ladder attachment points at side door
- Windshield covers white Stamoid & white Textulene
- International Navigation lights

Aft Deck

- Fiberglass non-skid deck
- Dual pedestal varnished teak table w/cover
- Bench seat aft for 4 -5 people w/removable cushions & cover
- Port & starboard pilaster storage lockers
- Port & starboard pilaster stainless steel railings
- (5) Stainless steel trimmed overhead lights
- (2) Overhead stereo speakers w/volume control
- (2) Bose stereo speakers mounted on aft bulkhead
- Starboard side hinged transom boarding gate
- Stainless steel trimmed entry door to Salon
- 8 Step stainless steel ladder to Flybridge (custom)
- (2) Non-skid port & starboard steps to side deck
- Marquipt Tide Ride ladder attachment points at side entry areas

- Fold down wing station on starboard side w/full engine controls for ease of docking
- GFCI outlet
- (4) Folding deck chairs

Swim Platform/Sport Deck

- (2) Fiberglass steps to Aft Deck w/courtesy lights
- Transom storage locker w/hydraulically actuated door
- (2) 50 amp/240 volt shore cords on Glendenning cable reels
- Dockside television & telephone inlets
- Whale hot & cold transom shower behind fiberglass door
- (2) Pop up tender cleats
- Freshwater wash down spigot
- Dockside water connector
- Swim ladder under swim platform
- (5) Stainless steel hoop rails
- (2) Clamp on rod holders
- Custom side gates at hoop rails for safety/entry

Flybridge

- Fiberglass non-skid decks
- Helm area forward to port
- Tracey mounted helm chair w/cover
- Tracey mounted companion chair w/cover
- Plexiglass Venturi windscreen w/stainless steel rail
- Starboard side wet bar w/under counter refrigerator & icemaker, sink & storage cabinet under sink
- Starboard side bench seat w/removable cushions & cover
- Portside L shaped seating w/removable cushions & cover & storage below
- Teak corner table w/padded cover
- Aluminum radar arch
- (2) Courtesy lights on radar arch
- Pipewelders fiberglass hardtop
- (9) Recessed stainless steel arched lights
- EZ2CY 4 side enclosure
- Cruiseair Flybridge air conditioning system
- Terrestrial type TV antenna under aft seating
- (4) Bose stereo speakers
- Quick Release freshwater wash down connection
- ACR IPIRB
- (2) Folding director's chairs

Helm Area

- Hatteras alarm panel MM1-110
- Fire system release handle
- RCL 100 Point Pad ACR searchlight control
- Analog engine gauges
- VDO rudder angle indicator
- American bow thruster control w/joystick
- Simrad AP 22 autopilot
- CAT ECM digital engine displays
- Sturdy electric clutch & throttle controls, single lever
- Bennett trim tab controls
- Horn button
- Furuno radar display w/open array 48" radar antenna
- North Star 6100i 10.5" plotter
- Naiad stabilizer controls (digital)
- Furuno RD 30 digital/depth/temp/speed indicator
- (2) Icom VHF remote mics tied to Pilothouse VHF's
- (3) Bilge pump indicator lights
- Tilt "Metal Style" helm wheel
- Clarion XMD1 AM/FM/CD/Sat radio
- Carbon fiber dash
- White Stamoid helm cover
- (2) Dedicated AC vents at helm

Boat Deck Area

- Fiberglass non-skid decks
- Custom tender chocks
- Nautical Structures dinghy davit w/custom fiberglass enclosure
- 8 Person Winslow life raft on hardtop
- (2) Bose stereo speakers
- KVH G 4 Trac Vision Sat dome
- KVH Trac Phone Sat system

Tender

- Novurania 430 DL 14'
- 50 HP Yamaha 4 stroke main (recently serviced)
- Nav lights

- Aft bench seat
- Battery switch
- Fuel filter
- Bilge pump
- Mid bench seat w/storage
- Forward seat
- Courtesy lights
- 12 Volt battery
- Tachometer

Engine Room

- 2500 Hour engine service completed May 2014
- (4) Auto/manual electric bilge pumps
- 6 Point Reverso oil change pump w/Quick Disconnect fitting
- Dual Racor 1000 fuel filters w/vacuum gauges
- (2) SW fuel priming pumps
- (2) Fuel transfer pumps
- Bow thruster PTO off port generator
- Bow thruster hydraulic oil reservoir
- (2) Racor 500 fuel filters (generators)
- Dripless shaft seals
- (3) 110V air condition raw water pumps
- Harbor Master System high water alarm
- Stabilizer cooling pump
- (5) Incandescent DC lights
- (6) Fluorescent AC lights
- Fire alarm indicator/sensor
- Hull side ventilator filters for Engine Room air intake
- (2) Head Hunter Mach 5 freshwater pressure pumps w/easy valving to switch pumps
- 110 Volt electric air compressor w/expansion tank
- (7) Cruiseair air conditioning compressors: 50,000 BTU, 5000 BTU, 10,000 BTU, 10,000 BTU, 24,000 BTU, 36,000 BTU, 30,000 BTU (Flybridge)
- 57 lb. Sea Fire FM 200 fire suppression system
- Air Sep crankcase ventilation system
- Engine Room start/stop key switches
- 7 Step Marquipt boarding ladder in Engine Room
- Mechanical engine gauge panels w/tach, oil pressure, water temp, drive oil, fuel pressure, oil, temp & amp gauges
- Engine hour meters
- Hydraulic steering reservoir
- Naiad stabilizer system #254 w/new hoses
- 3 1/2" prop shafts

- ZF 3.45 to 1 transmission ratio model BW2555
- (4) Coolant recovery bottles, (2) for engines, (2) for generators
- Engine block heaters
- Manifold hot & cold freshwater system w/port & starboard manifolds
- 1000 Gallons per day Sea Recovery Aqua Whisper water maker w/new membrane 2011
- Back Flush system by Reverse Osmosis of Florida
- Freshwater spigot w/hose in Engine Room
- Hynautic hydraulic steering
- Starboard transmission rebuilt 2014

Lazarette Crew Stateroom

- High water alarm
- (2) Shore power cord reels
- (2) Incandescent DC hold lights
- (2) Fluorescent AC lights
- Two drawer Sub Zero freezer
- 5 Step ladder to Aft Deck
- Watertight door to Engine Room
- (2) Hydraulic steering actuators
- Autopilot feedback sensor
- Rudder angle indicator sensor
- Trim tab pump
- Dripless rudder packings
- Smoke alarm
- Single berth to starboard
- Single berth aft (custom)
- Cruiseair air conditioning controls
- Sony DVD player
- Phillips 15" LCD TV
- Jabsco manual toilet
- Telephone/intercom system
- Fuel transfer selector valve
- Racor silicone reusable filter

Electrical

- 12 Volt/24 volt DC electrical system
- 110 Volt/220 volt AC electrical system
- Port 21.5 KW Onan generator in sound shields 2388
- Starboard 21.5 KW Onan generator in sound shields 2412
- Master Volt battery charger 24 volt 50 amp

- (4) 8D batteries
- (2) Shore power transformers
- AC electrical panel in Engine Room
- DC electrical panel in Engine Room
- (4) Battery cutoff switches
- Newmar 32-12-50 convertor for electronics
- 120/240 Volt ship's service #1 in Pilothouse w/(18) breaker protected circuits
- 120/240 Volt ship's service #2 panel in Engine Room w/(12) breaker protected circuits
- 120/240 Volt ship's service #3 panel in Engine Room w/(12) breaker protected circuits
- 120/240 Volt ship's service #4 panel in Engine Room w/(7) breaker protected circuits
- Windlass breaker in Engine Room
- Battery isolator
- Control system indicator
- 24 Volt ship service panel #1 in Pilothouse w/(20) breaker protected circuits
- 24 Volt ship service panel #2 in Engine Room w/(16) breaker protected circuits
- Pilothouse switching panel for shore 1/shore 2/gen 1/gen 2
- Selective voltage boost transformers w/selector switch in Pilothouse

Remarks

FANCI NANCI is on her fourth owner with three of the last sales involving the listing broker who knows her very well! Major options include digital stabilizers, two generators, bow thruster, custom bridge ladder from the Aft Deck, air conditioned Flybridge and a nice tender.

Exclusions

While every effort was made to list all pertinent included equipment aboard **FANCI NANCI**, there are some personal belongings aboard. Prospective purchasers should assume any item not specifically mentioned herein will not convey at closing.

Disclaimer

The Company offers the details of this vessel in good faith but cannot guarantee or warrant the accuracy of this information nor warrant the condition of the vessel. A buyer should instruct his agents, or his surveyors, to investigate such details as the buyer desires validated. This vessel is offered subject to prior sale, price change, or withdrawal without notice.

Исключения

При продаже яхты исключаются личные вещи владельца.

Отказ от ответственности

Компания предоставляет описание судна или яхты добросовестно, но не может гарантировать точность этой информации, а также не ручается за техническое состояние. Покупатель должен проинструктировать своих агентов или оценщиков исследовать представленную информацию более подробно, по собственному желанию. Продажа судна или яхты, изменение цены или снятие с продажи будет происходить без предварительного уведомления.

ФОТОГРАФИИ

Salon Looking Forward



Salon Looking to Starboard



Salon Looking Aft to Port



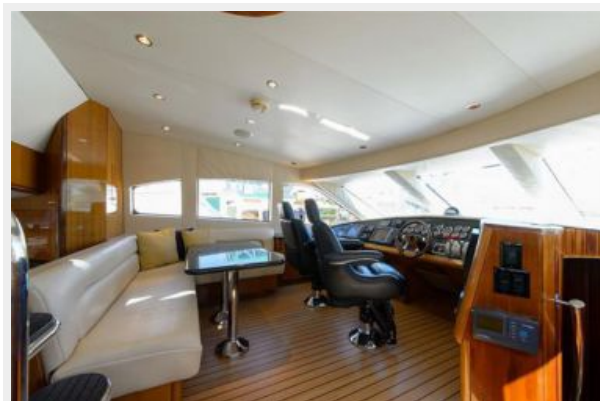
Galley Looking Forward



Galley Looking to Port



Pilothouse Looking to Port



Pilothouse Looking Aft



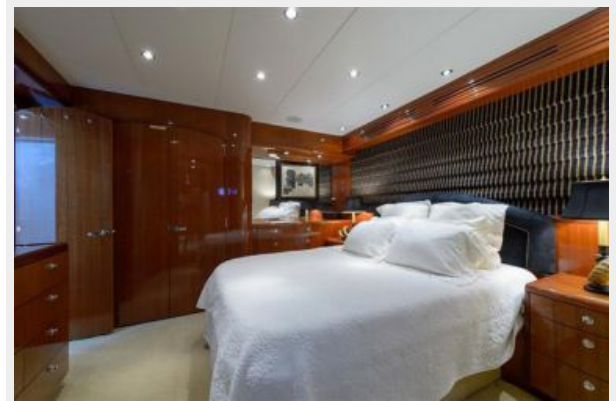
Pilothouse Helm



Main Companionway Laundry Area



Master Looking Aft



Master Looking to Port



Master Looking to Starboard



Master Looking Forward



Master Head



Master Tub/Shower



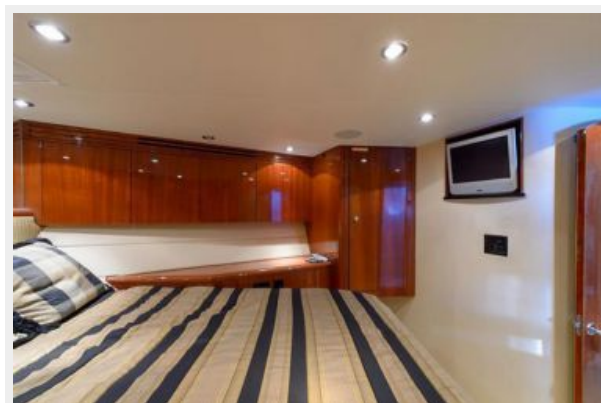
Starboard Guest Cabin



Forward VIP



VIP Looking to Starboard



VIP Head



Foredeck



Bow Seat



Spacious Side Decks



Aft Deck



Flybridge Seating



Flybridge Helm



Engine Room Looking Forward



Port Engine



Bow



Stern



Alternate Profile



КОНТАКТЫ

Андрей Шестаков (Andrey Shestakov) – ведущий яхтенный брокер отдела продаж яхт и судов компании Shestakov Yacht Sales Inc. Официальный представитель Shestakov Yacht Sales Inc. для русскоговорящих клиентов в центральном офисе компании в Майами/Форт Лодердейл/Флорида/США.

Контактная информация

Email: andrey@shestakovyachtsales.com

Web: shestakovyachtsales.com

Телефоны

Краснодарский край: **+7(918)465-66-44**

США, Майами, Флорида: **+1(954)274-4435**

Время работы

Понедельник – Суббота: **9:00 - 21:00**
EDT

Воскресенье: **Закрето**

Адрес



Harbour Towne Marina, 850 NE 3rd St,
STE 213, Dania, FL 33004