

TEAKY HUT — HERITAGE YACHTS INC



Судостроитель:
HERITAGE YACHTS INC

Год постройки: 1989

Модель: Траулер

Цена: ЦЕНА ЯХТЫ ПО ЗАПРОСУ

Местонахождение: United States

Длина общая: 44' 0" (13.41m)

Ширина: 13' 8" (4.17m)

Макс. осадка: 3' 8" (1.12m)

Купить Teaky Hut — HERITAGE YACHTS INC а также выбрать подходящую вам яхту из нашего каталога яхт вам поможет опытный яхтенный брокер Андрей Шестаков. На сегодняшний день компания Shestakov Yacht Sales Inc. имеет большое количество яхт в собственном списке продаж, а также тесно сотрудничает со всеми крупными яхтенными производителями по всему миру.

Для того чтобы купить яхту Teaky Hut — HERITAGE YACHTS INC а также проконсультироваться по любому вопросу связанному с покупкой, продажей, чартером яхт позвоните по телефону **+7(918)465-66-44**.

ОГЛАВЛЕНИЕ

ОГЛАВЛЕНИЕ	2
ХАРАКТЕРИСТИКИ	3
Обзор	3
Основная информация	6
Размеры	6
Скорость, вместимость и масса	6
Размещение	6
Корпус и палуба	6
Информация о двигателе	7
ФОТОГРАФИИ	8
КОНТАКТЫ	20
Контактная информация	20
Телефоны	20
Время работы	20
Адрес	20

ХАРАКТЕРИСТИКИ

Обзор

44' Heritage Nova Sundeck Trawler *Fantastic Live-Aboard!*

- Boat Name: "Teaky Hut"
- Year: 1989
- Previous Price: US\$ 71,900 (12/14)
- **Current Price: US\$ 69,900** (12/14)
- Located in Fort Lauderdale, FL
- Hull Material: Fiberglass
- Engine/Fuel Type: Twin Gas
- YW# 64991-2798623
- Central/Exclusive Listing
- Available for co-brokerage

Vessel Specifications

VESSEL WALKTHROUGH

The moment you step aboard, you get the "at home" feeling. The aft deck provides plenty of space for entertaining with the wet bar & fridge, wing doors that lead to the side decks, an easy flow to the flybridge with bimini and additional seating both port and starboard and a cocktail table ensuring the captain will not be left alone while underway. As you enter the salon from the aft deck, you'll experience the vast amount of natural lighting throughout which shows off the beautiful teak woodwork. The lower helm is in the salon but well forward and not a hindrance to the living space. Forward and down you'll find the dining/galley area. A full u-shaped dinette to port offering plenty of room for dinner guests and the well-equipped galley just starboard giving the chef easy flow from stove to table. Forward of the dining area is a guest head and guest cabin. The master stateroom features a walk around island berth and ensuite head compartment with separate shower stall.

The foredeck has enough clutter free space that you can move your deck chairs there at night while at anchor and enjoy peacefulness in complete comfort.

FORWARD CABIN

The forward cabin is very unique. Spacious twin berths over/under provide sleeping quarters for guests, however if you are a live aboard looking for a great home office this is it. The upper berth folds down to convert to a large settee, to port is a vanity/desk with slide out stool, storage and plenty of counter space for computers, papers, files, etc. There

are two storage drawers underneath the bunks, storage lockers with shelving and mirrored doors, two opening ports and one overhead hatch. There is access to the anchor locker forward.

GUEST HEAD

The forward enclosed head compartment features an electric flush marine toilet, two large bulkhead mirrors, sink with countertop and storage above and beneath, a shower nozzle and curtain, towel rack and one opening port.

GALLEY / DINING AREA

Galley This galley is spotless!! It is also well equipped to keep even the most demanding chef happy. New Microwave/Convection oven, New Norcold Fridge new Corian counters and plenty of storage make this area a delight to be in!!

- New Norcold Fridge
- New Microwave/Convection Oven
- Wonderful Dinette seats 6!
- Plenty of Counter Space
- Stainless Steel Round Sink

SALON

The spacious Salon features a lower helm station with starboard side opening door, a sofa, two arm chairs, lots of storage, and large windows to provide plenty of natural lighting, Up just three steps to the aft deck allows the party to flow from bridge to salon seamlessly.

You'll appreciate the comfort, the light, the beautiful wood the feeling of being at home when you enter this room.

MASTER STATEROOM

The master stateroom offers you the surroundings of luxury and peace. You'll enjoy waking up and the first thing you see is the beautiful carvings in the rich wood. The center island queen berth is surrounded by so much storage you will have to inventory your belongings so you can remember where you put them!

The ensuite head compartment is large. Featuring an electric flush marine toilet, sink, counter with storage above and beneath, an opening port, bulkhead mirror and a separate shower stall.

AFT DECK

A great platform for entertaining or just relaxing with your sundowner in hand, the aft deck features a wet bar with sink, fridge, and lots of storage! Wing doors lead to the side decks, a walk thru transom, swim platform with ladder make getting to the water easy and safe.

FLYBRIDGE

The flybridge with bimini was designed with the captain in mind. No long lonely passages on this baby! There is enough seating on the bridge for everyone with an L-Shaped settee to starboard with a cocktail table, a bench seat to port, and a helm chair at the console. Great visibility and full engine instrumentation.

ELECTRONICS

- Standard Horizon VHF
- Garmin 160 Fishfinder
- Garmin GPS128

ELECTRICAL

110V AC with two 30 amp shore power inlets and cords

12V DC

3 wet Batteries

Three Battery Switches

Onan 6.5 kw Generator, 411 Hours

True Charge battery charger

ENGINE ROOM

Powered by Twin Crusader 350 HP FWC Gas Engines

Hours: Port 612 Starboard 33

New Hot Water Unit

(2) Marine air A/C units with digital controls

Основная информация

Тип судна: Траулер

Модельный год: 1989

Год постройки: 1989

Страна: United States

Размеры

Длина общая: 44' 0" (13.41m)

Ширина: 13' 8" (4.17m)

Макс. осадка: 3' 8" (1.12m)

Скорость, вместимость и масса

Водоизмещение: 27000 Pounds

Вместимость воды: 300 Gallons

Вместимость сточного бака: 50 Gallons

Объем топливного бака: 500 Gallons

Размещение

Всего кают: 2

Корпус и палуба

Материал корпуса: Fiberglass

Отделка корпуса: Stainless Steel

Информация о двигателе

Двигатели: 2

Производитель: Crusader

Модель: 454 CI FWC

Тип двигателя: Outboard

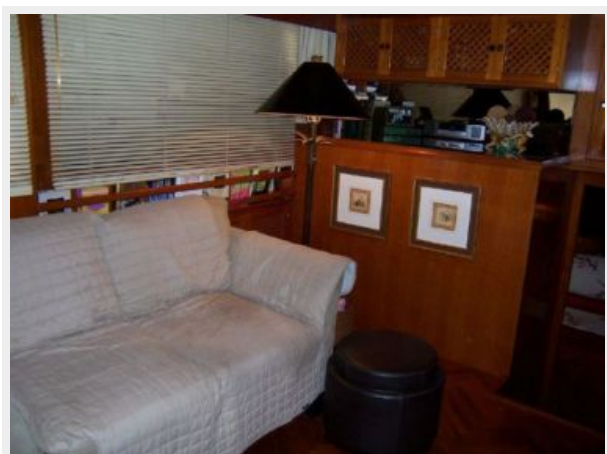
Тип топлива: Gas/Petrol

ФОТОГРАФИИ



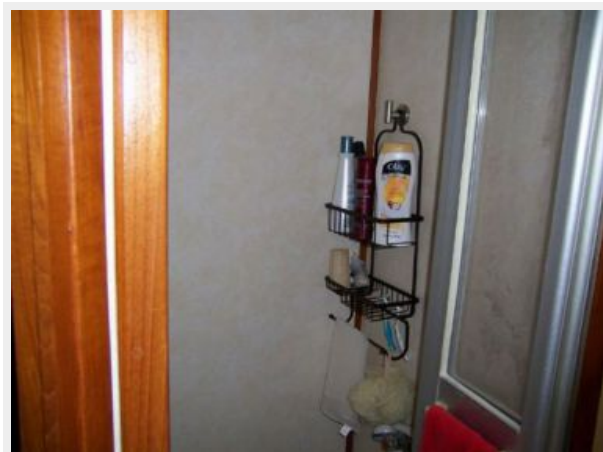


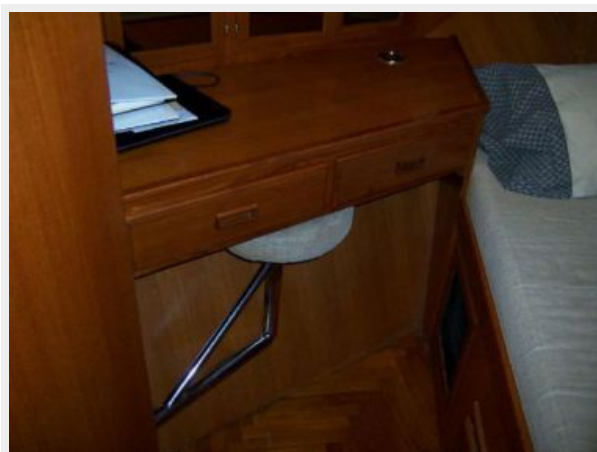
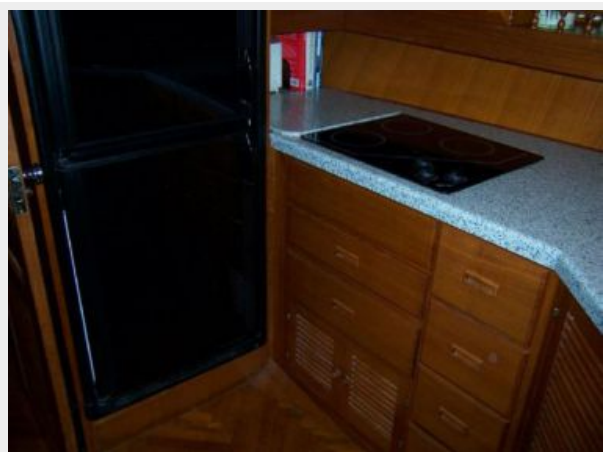


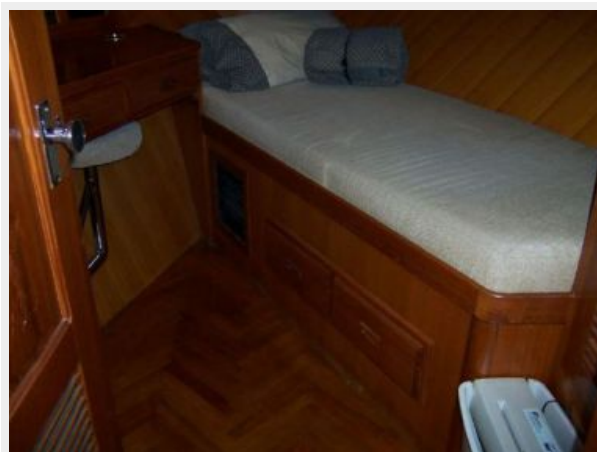




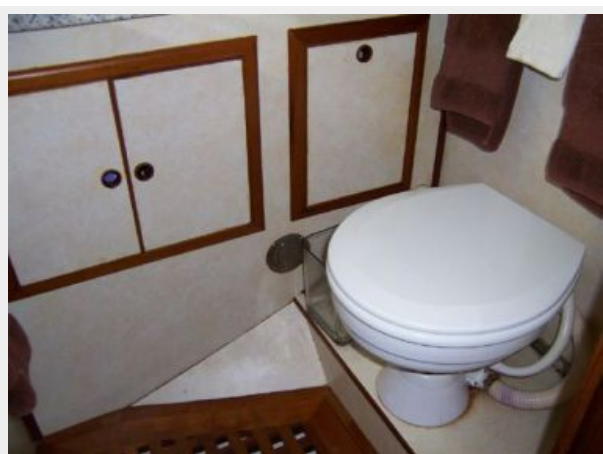














КОНТАКТЫ

Андрей Шестаков (Andrey Shestakov) – ведущий яхтенный брокер отдела продаж яхт и судов компании Shestakov Yacht Sales Inc. Официальный представитель Shestakov Yacht Sales Inc. для русскоговорящих клиентов в центральном офисе компании в Майами/Форт Лодердейл/Флорида/США.

Контактная информация

Email: andrey@shestakovyachtsales.com

Web: shestakovyachtsales.com

Телефоны

Краснодарский край: **+7(918)465-66-44**

США, Майами, Флорида: **+1(954)274-4435**

Время работы

Понедельник – Суббота: **9:00 - 21:00**
EDT

Воскресенье: **Закрито**

Адрес



Harbour Towne Marina, 850 NE 3rd St,
STE 213, Dania, FL 33004