

NEW CRANCHI 53 TRAVELER — CRANCHI



Судостроитель: CRANCHI

Год постройки: 2014

Модель: Моторная яхта

Цена: **ЦЕНА ЯХТЫ ПО ЗАПРОСУ**

Местонахождение: Thailand

Длина общая: 56' 6" (17.20m)

Ширина: 3' 4" (1.00m)

Мин. осадка: 3' 4" (1.00m)

Макс. осадка: 3' 4" (1.00m)

Крейс. скорость: 22 Kts. (25 MPH)

Макс. скорость: 25 Kts. (29 MPH)

Купить **New Cranchi 53 Traveler — CRANCHI** а также выбрать подходящую вам яхту из нашего каталога яхт вам поможет опытный яхтенный брокер Андрей Шестаков. На сегодняшний день компания **Shestakov Yacht Sales Inc.** имеет большое количество яхт в собственном списке продаж, а также тесно сотрудничает со всеми крупными яхтенными производителями по всему миру.

Для того чтобы купить яхту **New Cranchi 53 Traveler — CRANCHI** а также проконсультироваться по любому вопросу связанному с покупкой, продажей, чартером яхт позвоните по телефону **+7(918)465-66-44**.

ОГЛАВЛЕНИЕ

ОГЛАВЛЕНИЕ	2
ХАРАКТЕРИСТИКИ	3
Обзор	3
Основная информация	3
Размеры	4
Скорость, вместимость и масса	4
Размещение	4
Корпус и палуба	4
Информация о двигателе	5
ПОДРОБНОЕ ОПИСАНИЕ	6
Description	6
Исключения	7
Отказ от ответственности	7
ФОТОГРАФИИ	9
КОНТАКТЫ	11
Контактная информация	11
Телефоны	11
Время работы	11
Адрес	11

ХАРАКТЕРИСТИКИ

Обзор

New Yacht, Dealer stock

Eco Trawler 53 Extra Options

Bilge micro-suction system, Waste water tank, Roll-up foldaway hose, Acoustic and visual alarm on the dashboard for water in the bilge Antifouling - black Barometer and thermo hygrometer Fly bimini top with stainless steel arches Crew cabin with WC - sink - mattress Third cabin: twin beds and closet version Stern hood with side parts Covers for bow sunbathing cushion and bow sofa Flybridge sunbathing cushion Bow shower warm/cold Bow thruster with automatic extinguishers Washer-dryer Flybridge cabinet with sink, barbecue, ice maker, fridge Mooring kit: n° 8 mooring lines m15 d. mm18 + n.6 fender + n.6 fender covers + Boat hook + remote control for winch + anchor meter counter + foot control. External blinds for front/side windows Hydraulic stern platform Flybridge foldaway teak and stainless steel table Solid teak coverings on bow/stern lateral stringers Teak laid cockpit and swimming platform Saloon side and cabins side+ horizontal curtains Widescreen wipers n.3 with electric washer No.2 stern winches with warping bells Mosquito net on portholes TV SAT/45 Raymarine antenna without decoder Volvo Penta anticorrosion kit Air-conditioning 60.000BTU cold water system, without heating ATOS gliding trim tabs + BTOS dynamic stability control + CTOS turning control with Volvo Penta engine interface Search light 15kVA generator Multisensor Volvo (temperature-depth-speed) integrated in the helm instruments Stereo Radio FM/AM I-POD/USB marine type with control and loudspeakers in the cockpit, on the flybridge and on the foredeck. Radio CD + DVD in the master cabin Radio CD + DVD in the guest cabin Gps/chartplotter/radar - autopilot repeater in saloon Engine and stern room camera (no.2) TV 32" + DVD in saloon and I-pod base 22" LED TV in master cabin 22" LED TV in guest cabin VHF-DSC - double station Safe in stern cabin Supplementary ensign staff (teak) Extended Flybridge bimini top

Основная информация

Тип судна: Моторная яхта

Подкатегория: Expedition

Модельный год: 2014

Год постройки: 2014

Страна: Thailand

Верх: Enclosed

Размеры

Длина общая: 56' 6" (17.20m)

Длина по ватерлинии: 49' 3" (15.00m)

Длина палубы: 49' 3" (15.00m)

Ширина: 3' 4" (1.00m)

Мин. осадка: 3' 4" (1.00m)

Макс. осадка: 3' 4" (1.00m)

Трапы: 16' 3" (4.95m)

Длина привального бруса: 55' 10"
(17.00m)

Скорость, вместимость и масса

Крейс. скорость: 22 Kts. (25 MPH)

Дальность на крейсерской скорости:
2000

Макс. скорость: 25 Kts. (29 MPH)

Дальность на макс. скорости: 9 Kts.

Водоизмещение: 44092.4524 Pounds

Чистый вес: 20 Pounds

Вместимость воды: 213.97936212
Gallons

Объем топливного бака: 739.6817456
Gallons

Расход топлива: 10.56688208 Gallons

Размещение

Всего кают: 4

Спальные места: 14

Всего ком. состава: 3

Корпус и палуба

Материал корпуса: Fiberglass

Информация о двигателе

Двигатели: 2

Производитель: Volvo Penta

Модель: D6 IPS 2x435HP

Тип топлива: Diesel

ПОДРОБНОЕ ОПИСАНИЕ

Description

Cranchi is a family-owned Italian company, officially founded in 1870, although Giovanni Cranchi built his first boat years before that. In 2006 the company went public, but it is still run by 4th generation Aldo Cranchi, with at least five 5th generation Cranchis are now working for the brand. Cranchi is synonymous with Italian style and sophistication, providing a luxury quality yacht which is reliable, efficient with outstanding sea capabilities. Cranchi is well known for its maniacal attention to the search for perfection and for being among the pioneers in the working of fiberglass, today their products express the highest values in terms of design, engineering, reliability and aesthetics. Cranchi yachts are built in one of the most technologically sophisticated boatyards in the world, and it is evident when onboard that attention to detail and superior old world craftsmanship have gone into building their products: with the highest level of technology, every construction delivers a unique yacht. For five generations the Cranchi family prides itself on these exceptional standards and values, making them one of the leading manufacturers worldwide. Few are as dedicated and committed as Cantiere Nautico Cranchi. Cranchi's latest introduction paves their way into the contemporary trawler segment. Cranchi is known for its futurist designs in the express cruiser and flybridge markets, and we are now leveraging our design and manufacturing capabilities in this new arena.

The 53' is designed for long distance navigation at 14-18 knots with a consumption of 25 gallons per hour. With a fuel capacity of 740 US Gallons the yacht can travel for 667 miles at the speed of 10 knots. At 7.5 knots the range increases dramatically to over 1500 miles. When you need to get home fast and economy is not the most important thing, this yacht hits speeds of up to 22 knots at wide open throttle.

What is very different from the Cranchi Trawler 53 and your average US or Asian built trawler is what you find inside. The contemporary interior, combined with the easy maneuverability of the Volvo joystick controls make this this yacht something very unique to the US market.

Power is generated from twin Volvo engines efficiency is generated through Cranchi hull design and allocation of weight throughout the yacht. Batteries can be charged by the solar panels integrated above the wheelhouse.

The interior provides a large salon that is directly open to the aft cockpit, allowing easy conversation and serving from the aft galley. This yacht is made for living life and enjoy long range cruising. When entering the salon there is an enormous amount of entertainment space and a forward port side dinette allows an additional place to enjoy the scenery through the wrap around windows throughout the wheel house.

The forward bow area has a sunpad (with ample storage underneath) as well as a shaded area for owner's and their guests to get a bit of wind in their face. The seating area is equipped with a table as well as a refrigerator so drinks are not that far away. When at anchor, or in port, there is also a removable bimini that covers much of this area.

Down below there is room for 6 to sleep comfortably. The en-suite VIP Forward offers a tremendous amount of room for guests, as does the port side guest room with twin bunks. Aft is a full beam Master Stateroom allowing ample room for the owner, along with a beautiful view through the windows on either side. Lastly, there is a crew cabin with access forward of the bow sunpad.

The upper deck offers an extensive amount of sunbathing options. Forward of the bridge is an extremely large fixed sunpad. Just behind the upper helm area you will find L-shaped seating with a table. Aft is a blank canvas for each owner to appoint as they see fit. More Sunpads? A Tender? Jestskis? Lounge Furniture? Whatever each owner decides, his or her yacht will be noticed, not just for her beauty but she is not so high maintenance either – in a word, a Keeper...

Eco Trawler 53 Extra Options

Bilge micro-suction system, Waste water tank, Roll-up foldaway hose, Acoustic and visual alarm on the dashboard for water in the bilge Antifouling - black Barometer and thermo hygrometer Fly bimini top with stainless steel arches Crew cabin with WC - sink - mattress Third cabin: twin beds and closet version Stern hood with side parts Covers for bow sunbathing cushion and bow sofa Flybridge sunbathing cushion Bow shower warm/cold Bow thruster with automatic extinguishers Washer-dryer Flybridge cabinet with sink, barbecue, ice maker, fridge Mooring kit: n° 8 mooring lines m15 d. mm18 + n.6 fender + n.6 fender covers + Boat hook + remote control for winch + anchor meter counter + foot control. External blinds for front/side windows Hydraulic stern platform Flybridge foldaway teak and stainless steel table Solid teak coverings on bow/stern lateral stringers Teak laid cockpit and swimming platform Saloon side and cabins side+ horizontal curtains Widescreen wipers n.3 with electric washer No.2 stern winches with warping bells Mosquito net on portholes TV SAT/45 Raymarine antenna without decoder Volvo Penta anticorrosion kit Air-conditioning 60.000BTU cold water system, without heating ATOS gliding trim tabs + BTOS dynamic stability control + CTOS turning control with Volvo Penta engine interface Search light 15kVA generator Multisensor Volvo (temperature-depth-speed) integrated in the helm instruments Stereo Radio FM/AM I-POD/USB marine type with control and loudspeakers in the cockpit, on the flybridge and on the foredeck. Radio CD + DVD in the master cabin Radio CD + DVD in the guest cabin Gps/chartplotter/radar - autopilot repeater in saloon Engine and stern room camera (no.2) TV 32" + DVD in saloon and I-pod base 22" LED TV in master cabin 22" LED TV in guest cabin VHF-DSC - double station Safe in stern cabin Supplementary ensign staff (teak) Extended Flybridge bimini top

Исключения

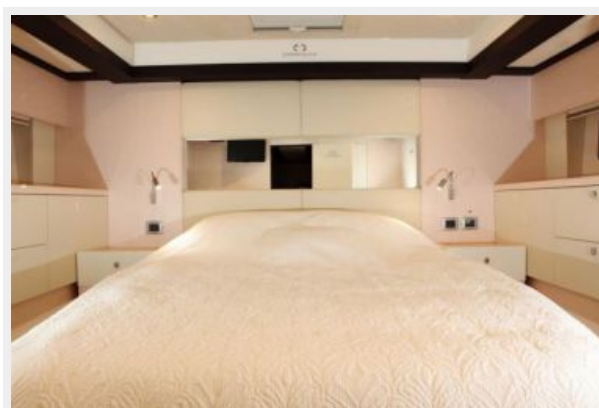
При продаже яхты исключаются личные вещи владельца.

Отказ от ответственности

Компания предоставляет описание судна или яхты добросовестно, но не может

гарантировать точность этой информации, а также не ручается за техническое состояние. Покупатель должен проинструктировать своих агентов или оценщиков исследовать представленную информацию более подробно, по собственному желанию. Продажа судна или яхты, изменение цены или снятие с продажи будет происходить без предварительного уведомления.

ФОТОГРАФИИ





КОНТАКТЫ

Андрей Шестаков (Andrey Shestakov) – ведущий яхтенный брокер отдела продаж яхт и судов компании Shestakov Yacht Sales Inc. Официальный представитель Shestakov Yacht Sales Inc. для русскоговорящих клиентов в центральном офисе компании в Майами/Форт Лодердейл/Флорида/США.

Контактная информация

Email: andrey@shestakovyachtsales.com

Web: shestakovyachtsales.com

Телефоны

Краснодарский край: **+7(918)465-66-44**

США, Майами, Флорида: **+1(954)274-4435**

Время работы

Понедельник – Суббота: **9:00 - 21:00**
EDT

Воскресенье: **Закрыто**

Адрес



Harbour Towne Marina, 850 NE 3rd St,
STE 213, Dania, FL 33004