

GRAND SLAM — ENDEAVOUR



Builder: ENDEAVOUR

Year Built: 1985

Model: Cruising Sailboat

Price: PRICE ON APPLICATION

Location: United States

LOA: 33' 0" (10.06m)

Beam: 11' 6" (3.51m)

Min Draft: 4' 6" (1.37m)

Our experienced yacht broker, Andrey Shestakov, will help you choose and buy a yacht that best suits your needs **Grand Slam — ENDEAVOUR** from our catalogue. Presently, at Shestakov Yacht Sales Inc., we have a wide variety of yachts available on our sale's list. We also work in close contact with all the big yacht manufacturers from all over the world.

If you would like to buy a yacht **Grand Slam — ENDEAVOUR** or would like help answering any questions concerning purchasing, selling or chartering a yacht, please call **+1(954)274-4435**

TABLE OF CONTENTS

TABLE OF CONTENTS	2
SPECIFICATIONS	4
Overview	4
Basic Information	4
Dimensions	4
Speed, Capacities and Weight	4
Accommodations	4
Hull and Deck Information	4
Engine Information	5
DETAILED INFORMATION	6
Accommodations	6
Galley	6
Mechanical & Electrical	6
Electronics	7
Sails & Rigging	7
Deck Equipment	7
Exclusions	8
Disclaimer	8
PHOTOS	9
Nice Dodger and Bimini	9
Garmin GPS	9
Older Autopilot	9
Salon	9
Port Salon Converts to Berth	9
Fold Down Dining Table	9
Starboard Settee	10
Galley	10
Galley Maid Propane Stove and Oven	10

Deep Icebox	10
V Berth and Lockers	10
Visible Chainplates	10
Nav Desk	11
Quarter berth	11
Lextrasen Head and Shower	11
Yanmar 20 hp 1150 hours rear view	11
Access Inside Deep Lazarette	11
Port View	11
Magma Grill	12
Stern View	12
Cockpit	12
43# Primary Winches	12
3 hp Mercury Outboard	12
Bow View	12
44# Rochna Anchor	13
Bottom View	13
Prop and Rudder	13
Negotiable Kayak	13
CONTACTS	14
Contact details	14
Telephones	14
Office hours	14
Address	14

SPECIFICATIONS

Overview

Grand Slam is a nice pocket cruiser at an affordable price! 4'6" draft is perfect for the Florida Keys or Bahamas. 6'2" headroom, roomy and comfortable interior. Good ground tackle with a new 44# Rochna anchor, Garmin GPS, 2013 Inflatable Dinghy, dodger and Bimini in good condition. New Mainsail in 2002. Sails in good condition. Only 1150 hours on the 20hp Yanmar engine. This boat has been used seasonally and in good condition overall.

Basic Information

Category: Cruising Sailboat

Model Year: 1985

Year Built: 1985

Country: United States

Dimensions

LOA: 33' 0" (10.06m)

LWL: 27' 6" (8.38m)

Beam: 11' 6" (3.51m)

Min Draft: 4' 6" (1.37m)

Speed, Capacities and Weight

Displacement: 11350 Pounds

Water Capacity: 36 Gallons

Holding Tank: 14 Gallons

Fuel Capacity: 36 Gallons

Accommodations

Total Cabins: 2

Total Heads: 1

Hull and Deck Information

Hull Material: Fiberglass

Engine Information

Engines: 1

Manufacturer: Yanmar

Model: 3GMF

Engine Type: Inboard

Fuel Type: Diesel

DETAILED INFORMATION

Accommodations

Traditional layout with an L-shaped galley to starboard and quarter berth to port. The navigation desk has a folding leaf to expand the quarter berth area. The salon has a L shaped settee to port, dining table that folds up to the bulkhead and a bench settee to starboard. Private head and shower to port. V-berth stateroom forward.

- 6'2" headroom
- Numerous opening ports and hatches
- Teak joinery and cabinet doors
- Tan upholstery on settees
- Dining table folds against bulkhead cabinet and has a drop leaf to open to seat 6
- Port settee converts to berth
- Navigation desk and electric panel
- 12V fans
- Roomy V berth
- Hanging locker and drawer storage
- Locking safe
- Lextrasan system for head
- Handheld shower wand
- SS sink and vanity

Galley

- Galley Maid 2 burner propane stove and oven with cover board
- Deep Insulated Icebox
- Deep SS sink
- Hot and Cold Pressure water system
- 6 gal hot water heater
- cold water foot pump
- Cabinets and dish storage
- LED light in galley

Mechanical & Electrical

- 20 Hp 3GMF Yanmar in clean condition, only 1150 hours
- front access under companionway and rear access from deep lazarette in cockpit
- 6 gal hot water heater
- 20 amp Smart charger

- Solar Trickle charge for start battery
- Battery parallel switch
- Batteries
- Electric and breaker panel

Electronics

- Basic electronics on pedestal with carved wood dolphin accent
- New Garmin GPS
- Standard Horizon VHF radio
- Standard Horizon Depth and Speed
- Older autopilot, working now but no promises
- Aquameter compass
- AM/FM Stereo
- Speakers in Salon and Cockpit

Sails & Rigging

- Battened Mainsail 2002 - good condition
- Blue sail cover
- Roller furling system
- 150 and 135 headsails
- Keel stepped mast
- Internal jiffy reefing
- Traveller
- (2) 43# Lewmar Primary ST winches
- (2) Barient 10# winches on mast
- Lines lead to cockpit thru line stoppers

Deck Equipment

- 44# Rocna anchor 40' chain, 200' rode
- anchor locker
- anchor washdown
- SS bow rail
- SS stern rail with gate opening
- swim ladder
- Dodger and bimini
- (2) flip chairs
- New Inflatable dinghy (2013)

- 3hp Mercury Outboard
- Magma grill
- Life sling
- Handrails
- Deep lazette storage
- KAYAK - negotiable

Exclusions

Owner's personal belongings.

Disclaimer

The Company offers the details of this vessel or yacht in good faith but cannot guarantee or warrant the accuracy of this information nor warrant the condition of the vessel. A buyer should instruct his representatives, agents, or his surveyors, to investigate such details as the buyer desires validated. This vessel or yacht is offered subject to prior sale, price change, or withdrawal without notice.

PHOTOS

Nice Dodger and Bimini



Garmin GPS



Older Autopilot



Salon



Port Salon Converts to Berth



Fold Down Dining Table



Starboard Settee



Galley



Galley Maid Propane Stove and Oven



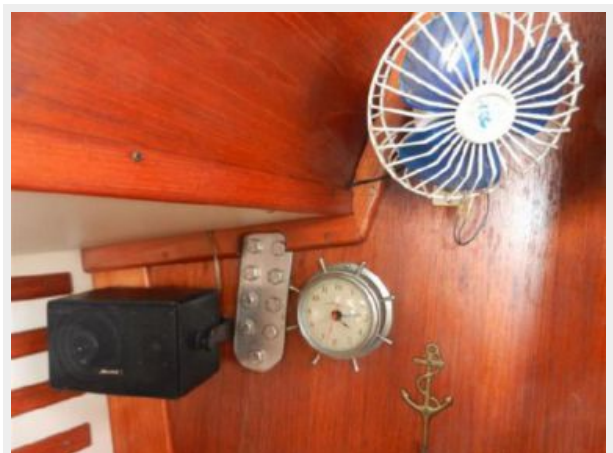
Deep Icebox



V Berth and Lockers



Visible Chainplates



Nav Desk



Quarter berth



Lextrasen Head and Shower



Yanmar 20 hp 1150 hours rear view



Access Inside Deep Lazarette



Port View



Magma Grill



Stern View



Cockpit



43# Primary Winches



3 hp Mercury Outboard



Bow View



44# Rochna Anchor



Bottom View



Prop and Rudder



Negotiable Kayak



CONTACTS

Andrey Shestakov, leading yacht broker of the sales department of Shestakov Yacht Sales Inc. Shestakov Yacht Sales Inc., the official representative of the Miami/Fort Lauderdale FL headquarters.

Contact details

Email: andrey@shestakovyachtsales.com

Web: shestakovyachtsales.com/en/

Telephones

USA: +1(954)274-4435

Office hours

Monday – Saturday: **9:00 - 21:00** EDT

Sunday: **closed**

Address



Harbour Towne Marina, 850 NE 3rd St,
STE 213, Dania, FL 33004