

DAMSELLE — NEPTUNUS



Судостроитель: NEPTUNUS

Год постройки: 2007

Модель: Моторная яхта

Цена: **ЦЕНА ЯХТЫ ПО ЗАПРОСУ**

Местонахождение: United States

Длина общая: 62' 0" (18.90m)

Ширина: 16' 8" (5.08m)

Мин. осадка: 5' 0" (1.52m)

Макс. осадка: 5' 3" (1.60m)

Крейс. скорость: 23 Kts. (26 MPH)

Макс. скорость: 28 Kts. (32 MPH)

Купить **DAMSELLE — NEPTUNUS** а также выбрать подходящую вам яхту из нашего каталога яхт вам поможет опытный яхтенный брокер Андрей Шестаков. На сегодняшний день компания **Shestakov Yacht Sales Inc.** имеет большое количество яхт в собственном списке продаж, а также тесно сотрудничает со всеми крупными яхтенными производителями по всему миру.

Для того чтобы купить яхту **DAMSELLE — NEPTUNUS** а также проконсультироваться по любому вопросу связанному с покупкой, продажей, чартером яхт позвоните по телефону **+7(918)465-66-44**.

ОГЛАВЛЕНИЕ

| | |
|---|----|
| ОГЛАВЛЕНИЕ | 2 |
| ХАРАКТЕРИСТИКИ | 7 |
| Основная информация | 7 |
| Размеры | 7 |
| Скорость, вместимость и масса | 7 |
| Размещение | 7 |
| Корпус и палуба | 8 |
| Информация о двигателе | 8 |
| ПОДРОБНОЕ ОПИСАНИЕ | 9 |
| Vessel Walkthrough | 9 |
| Salon | 9 |
| Galley | 10 |
| Lower Station, Forward to port, includes: | 11 |
| Dining Area | 12 |
| Companionway | 12 |
| Day Head | 12 |
| Master Cabin | 12 |
| Master Head | 13 |
| Starboard Side Guest Cabin | 13 |
| Guest Head | 13 |
| VIP Cabin | 14 |
| Forward Deck | 15 |
| Aft Deck | 15 |
| Flybridge | 16 |
| Flybridge Navigation Equipment | 17 |
| Engine Room | 18 |
| Lazarette | 19 |
| Electrical | 20 |

| | |
|-------------------------------|-----------|
| RIB Tender | 21 |
| Construction Details | 21 |
| Remarks | 21 |
| Exclusions | 22 |
| Disclaimer | 22 |
| Исключения | 22 |
| Отказ от ответственности | 22 |
| ФОТОГРАФИИ | 23 |
| Salon Looking Forward | 23 |
| Salon Looking to Starboard | 23 |
| Salon Looking to Port | 23 |
| Salon Office Cabinet | 23 |
| Salon Entertainment | 23 |
| Salon Office Cabinet | 23 |
| Salon Looking Aft | 24 |
| Galley Looking Forward | 24 |
| Dishwasher | 24 |
| Galley Looking Aft | 24 |
| Fitted Galleyware Drawer | 24 |
| Fitted Dish Drawer | 24 |
| Fitted Dish Drawer | 25 |
| Portside Galley Area | 25 |
| Portside Galley Area | 25 |
| Custom Glassware Storage & TV | 25 |
| Lower Helm | 25 |
| Main Deck Dining Area | 25 |
| Graphic Panel | 26 |
| Electrical Panel | 26 |
| Companionway Laundry | 26 |

| | |
|-------------------------------|----|
| Electrical Panel | 26 |
| Companionway | 26 |
| Master Looking Aft | 26 |
| Master Looking to Starboard | 27 |
| Master Looking Port Aft | 27 |
| Master Vanity | 27 |
| Master Looking Port Forward | 27 |
| Master Head | 28 |
| Owner Shower | 28 |
| Guest Head | 28 |
| Starboard Guest Cabin | 28 |
| VIP Looking Forward | 29 |
| VIP Looking Aft | 29 |
| VIP Closet | 29 |
| Thruster, Batteries & Charger | 29 |
| Spare Props Under VIP Berth | 30 |
| Foredeck | 30 |
| Walk Around Side Deck | 30 |
| Aft Deck | 30 |
| Aft Deck Table | 30 |
| Easy Access Flybridge Steps | 30 |
| Hidden Cockpit Controls | 31 |
| Aft Deck Grill | 31 |
| Aft Deck Camera | 31 |
| Flybridge Looking Forward | 31 |
| Flybridge Looking Aft | 31 |
| Flybridge Starboard Side Bar | 31 |
| Flybridge Portside Bar | 32 |
| Aft Flybridge Seating | 32 |

| | |
|------------------------------------|----|
| Flybridge Portside Helm & Controls | 32 |
| Flybridge Forward Seat | 32 |
| Flybridge Hatch Closed | 32 |
| Area Aft of Flybridge Seating | 32 |
| Helm | 33 |
| Helm | 33 |
| Helm Detail | 33 |
| Engine Room Access | 33 |
| Port Engine | 33 |
| Starboard Engine | 33 |
| Algae X Fuel Conditioner | 34 |
| Fuel System | 34 |
| 5 Point Oil Change | 34 |
| Dripless Shaft Seals | 34 |
| 24.3 KW CAT Generator | 34 |
| Lazarette Access | 34 |
| Lazarette Door | 35 |
| Lazarette to Port | 35 |
| Lazarette to Starboard | 35 |
| Sink | 35 |
| Watermaker | 35 |
| A SEA Frequency Converter | 35 |
| Freezer | 36 |
| Hydraulic Platform | 36 |
| Partially Deployed | 36 |
| 12' Avon | 36 |
| 12' Avon | 36 |
| 10 Year Copper Coat Bottom Job | 36 |
| 10 Year Copper Coat Bottom Job | 37 |

| | |
|-----------------------|----|
| Prop Speed | 37 |
| Alternate Profile | 37 |
| КОНТАКТЫ | 38 |
| Контактная информация | 38 |
| Телефоны | 38 |
| Время работы | 38 |
| Адрес | 38 |

ХАРАКТЕРИСТИКИ

Основная информация

| | |
|-----------------------------|---|
| Тип судна: Моторная яхта | Подкатегория: Flybridge with Euro Transom |
| Модельный год: 2008 | Год постройки: 2007 |
| Страна: United States | Верх: Hardtop |
| Открытая палуба мостика: Да | |

Размеры

| | |
|------------------------------|-----------------------------|
| Длина общая: 62' 0" (18.90m) | Ширина: 16' 8" (5.08m) |
| Мин. осадка: 5' 0" (1.52m) | Макс. осадка: 5' 3" (1.60m) |

Скорость, вместимость и масса

| | |
|--|--|
| Крейс. скорость: 23 Kts. (26 MPH) | Крейсерская скорость поворота: 2000 Kts. |
| Дальность на крейсерской скорости: 350 | Макс. скорость: 28 Kts. (32 MPH) |
| | Макс. скорость поворота: 2300 Kts. |
| Водоизмещение: 68000 Pounds | Чистый вес: 34 Pounds |
| Вместимость воды: 250 Gallons | Вместимость сточного бака: 110 Gallons |
| Объем топливного бака: 1105 Gallons | |

Размещение

| | |
|-------------------|-----------------------|
| Всего кают: 3 | Всего коек: 3 |
| Спальные места: 6 | Всего ком. состава: 4 |

Корпус и палуба

Материал корпуса: Fiberglass

Материал палубы: Teak

Комплектация корпуса: Modified Deep Vee

Дизайнер корпуса: Tony Castro

Дизайнер экстерьера: Tony Castro

Дизайнер интерьера: Neptunus Yachts

Информация о двигателе

Двигатели: 2

Производитель: Caterpillar

Модель: C-18

Тип двигателя: Inboard

Тип топлива: Diesel

ПОДРОБНОЕ ОПИСАНИЕ

Vessel Walkthrough

DAMSELLE is a Euro Style Sedan Motoryacht with a decidedly North American flair. Her interior is graced with a natural cherry joinery with a high gloss finish. **DAMSELLE** was custom built, has countless improvements not the least of which is her extended hardtop and fully enclosed Flybridge.

Boarding **DAMSELLE** is from either the swim platform and up the port or starboard steps or from either the port or starboard Aft Deck.

DAMSELLE has a comfortable Aft Deck with built in seating, same level Salon with built in furniture, a raised Galley and Dinette Area with the optional mini Lower Station.

Below are three cabins with the forward VIP and Starboard twin bed Guest Cabin sharing a portside Head and the Master on centerline with a private head and shower. A Day Head to port adds to the convenience.

The Engine Room is accessed via a hatch in the Aft Deck sole. The large Lazarette is easily accessed via a custom transom door from the swim platform and has been fitted out as a work shop/storage area with a head and sink for possible future conversion to a Crew Cabin.

The Flybridge Deck has easy access via comfortable stairs from the Aft Deck. The extra large hardtop covers the bow seat area forward of the helm for one large air conditioned gathering area. Further features of the Flybridge include a bar, dinette seating with table and an open area aft of the seating. Being the Owner's second Neptunus he took the opportunity to custom enlarge almost every storage area throughout the boat.

Salon

The Salon is entered via the curved sliding Trend stainless steel entry doors custom split in the middle. The high gloss cherry contrasts nicely with the crème colored sofa and carpet. The sofa is "C" shaped and has storage and rope lights below. It provides seating for at least six people.

A custom burlwood topped cherry coffee table with two storage doors lies in front. The forward end of the sofa terminates into a built in end table with two storage cabinet doors below.

To port starting aft are two full size upholstered chairs separated by a cherry wood bar cabinet with a pullout liquor drawer and a burlwood top. Behind the aft chair outboard, is a small office cabinet with two pullout shelves for laptop/printer/scanner/fax machine. Included are a Wi Fi router with booster, Sony lap top, Cannon all-in-one printer. Cell phone system is linked to the Salon and Master Stateroom telephones.

Next forward is a curved cabinet housing a built in 32" Sony LCD TV with three cabinets below. A hidden UPS keeps the SAT TV signal during power changes.

Inside the cabinets are the entertainment electronics consisting of a Bose Lifestyle 48 (DVD/CD/tuner) with hard drive music storage, the Sat TV tuner and receiver for the Sea Tel 24 Sat Dome system configured for both the Galaxy Latin America and North America, an AB switch and the attenuator for the Terrestrial TV antenna. The Salon Direct TV is also controllable from the Master. Also in the Salon are full silk drapes on the aft door, twin square columns with sconce lights, a decorative ceiling treatment over the coffee table, a Bose five channel speaker system with a hidden subwoofer, eight halogen mini spots on a dimmer, digital AC controls and an additional storage cabinet facing aft from the Galley.

The signature two level Salon windows are covered with lined silk drapes.

All windows throughout are tinted with a hyperoptic ceramic UV film.

Also in this area is a CO detector, carpet runners, digital AC controls, a Maritron maritime security system throughout the yacht and an amplified cell phone system with an external cell booster antenna.

Galley

The Galley is open to and two steps up from the Salon. The sole is planked cherry. The customized Galley of **DAMSELLE** is full beam with a small Lower Station to port. A large Dinette is to starboard. The Dinette seats at least five people with an off white Ultra leather seating surface. The aft corner of the table hinges up for easy access.

Equipment includes:

- Under mount double basin stainless steel sink
- Single handle spray faucet
- Separate drinking water tap
- Soap dispenser
- Insinkerator stainless steel disposal
- AEG 4 Burner ceramic top cook top
- Built in stainless steel Panasonic microwave/convection oven w/exhaust fan & work light above the cook top
- AEG stainless steel self-cleaning oven below cook top
- (9) Cherry cabinet doors
- One corner storage cabinet with glass front
- (5) Cherry drawers with fitted flatware & dishware
- Large cabinets w/(3) pullout storage drawers to port behind a cherry door
- Granite countertops
- Central vacuum outlet
- Lucite liquor bottle storage

- Overhead four door mirrored glass cabinet w/dedicated lighting to port include sale to all crystal barware
- (15) Halogen mini spots – most on a dimmer
- Sub Zero under counter drink refrigerator located to port behind a cherry door
- Portside beverage cooler/wine cooler w/glass front door behind cherry door
- 3 Shelf storage cabinet to port behind cherry door
- 2 Shelf storage cabinet to port behind cherry door
- Miele 18" compact dishwasher with cherry front - never used
- Starboard side Sub Zero fridge/freezer drawers w/electrical locking mechanism
- 19" Sharp Aquos LCD TV facing Dinette
- Also top loading freezer in Lazarette

Lower Station, Forward to port, includes:

- Custom designed, ergonomically designed with curved burl dashboard & storage below
- Tilt cherry wood helm wheel
- CAT electronic single lever controls
- Vetus bow thruster control
- (2) CAT/LCD engine gauge/monitors
- Bennett trim tab controls & LED indicators & auto retract function
- Fireboy engine shutdown override panel
- Icom M-604 VHF w/DSC
- Northstar 8000 i 12" plotter /depth
- Simrad AP25 autopilot control head
- Raymarine ST60 Tridata depth/speed/log
- 12 Volt accessory outlet
- Start/stop switches
- (2) Wiper controls
- Horn button
- Windshield defogger control
- Profile Graphic panel w/power supply LED indicators
- (2) Storage cabinets below helm
- Peterson upholstered helm seat mounted on custom cabinet with storage below for all boat manuals
- Simrad wireless autopilot control head
- 4" Ritchie magnetic compass
- Overhead night red running light
- Power assisted hydraulic steering
- Cup holder

- Fold down footrest

Dining Area

All the way forward is an Ultra Leather upholstered Dinette to seat five to six people with storage below. A fixed burlwood top dining table sits on a riser along with the Dinette to offer better exterior visibility. The inboard aft corner of the table folds for easy access. A stool is available to increase the dining capacity by one more person.

Above are two dedicated halogen mini spots.

Companionway

Six curved steps each with an LED step light and lead to below. Along the way in a customized two door electrical panel with a separate AC/DC electrical panel. Dark tinted doors allow the LED indicators to show.

At the bottom of the stairs one can go aft and down two more steps to the Day Head then aft to the Master Cabin or up one step to the centerline Companionway with the Guest Cabin to starboard, Laundry Center with a Whirlpool stacked washer/dryer behind cherry doors and Guest Head to port or the entrance to the forward most VIP Cabin. A skylight above offers excellent daytime lighting. A carpet runner protects the sole.

Day Head

Just forward of the Master Cabin is the Day Head with a marble sole, electric Raritan freshwater flush head, a cherry vanity with storage below and a Corian countertop above with an under mount stainless steel sink. Also in this head are two overhead halogen lights in the mirrored overhead, an exhaust fan and a custom storage cabinet behind the toilet.

Master Cabin

The Master Cabin is next aft entered via an arched cherry door, a tapered queen size berth on centerline. It has two storage drawers and rope lighting below and an upholstered headboard set upon five mirrored panels and a curved cherry and vinyl soffit above. Two halogen reading lights are in the soffit.

Built in two drawer cherry nightstands with sconce type accent lamps above flank the berth. To port is a built in chest with ten drawers. A matching ten drawer chest lies to starboard. Above the drawers is a cherry countertop and three port and three starboard large deadlights covered with

shades and drapes. These new style deadlights become available in the 2007 model.

Forward on the portside is a double door, cedar lined auto lit hanging locker. It has been custom enlarged and has a hidden digital safe.

The Samsung 23" LCD TV is built in the forward bulkhead on the portside of the centerline arched entry door. To starboard is the entrance to the cabin's private Head and a small vanity with a dressing mirror and stool facing aft.

Also in the cabin are battery shutoff switches, a CO detector, two Bose stereo speakers linked to the Salon's Lifestyle 48 system, digital AC control and halogen mini spots, most on a dimmer.

Master Head

The custom expanded en suite Master Head has a Crema Marafil marble tile sole, a bow front cherry vanity with a storage cabinet below and a China under mount sink in a Corian countertop above. There are four mirrored medicine cabinets above the sink (custom enlarged to increase storage 100%) with a fixed dead light above covered with a pleated shade.

The stall shower has a clear glass frameless door, a seat, a shelf, a handheld or wall mountable shower fixture, a light, a soap/shampoo dispenser and an exhaust fan.

The toilet is a freshwater flush Raritan Atlantis elongated bowl model. The overhead is mirrored with three halogen lights above additional indirect lighting and entry is via an arched sliding cherry entry door.

Starboard Side Guest Cabin

Entered from the forward end of the cabin via an arched cherry door is the preferred double berth arrangement with three drawers (one large, two small) below.

Between the berth and the inboard bulkhead is a cherry three drawer nightstand with soffit type AC delivery above. Outboard of the berth is a cherry shelf to serve as a nightstand. Two fixed dead lights with drapes are above with a reading light in a soffit above berth. Eight cherry storage cabinets are above the dead lights. At the foot of the berth is a cedar lined hanging locker expanded for additional storage.

Also in this cabin is a Sharp 19" LCD TV, four overhead dimmable halogen mini spots, two halogen mini spots as reading lights, digital AC controls, a dressing mirror on the reverse of the arched entry door and a carpeted sole with a carpet runner.

Guest Head

The Forward Guest Head is shared by the VIP and Guest Cabins with two arched cherry entry doors, one to the main Companionway and other direct to the VIP Cabin.

The sole is Crema Marafil Granite tile. The toilet is a freshwater flush full size Raritan Atlantis model. The bow front cherry vanity has one cabinet below and a Corian countertop with a China under mount sink above.

Above the sink is a pleated shade covering a fixed dead light. Three mirrored medicine cabinet doors custom enlarged for additional storage are above with rope lighting below the valance.

The shower has a clear frameless glass door, a handheld or wall mountable fixture, a Corian shelf and a wallpaper like Mica finish on the bulkheads that is as elegant as it is practical.

Also in the shower is a light, a shampoo/soap dispenser and an exhaust fan. The Head also has three halogen mini spots above in a mirrored overhead.

A Y valve with overboard discharge was fitted to the VIP Head.

VIP Cabin

The VIP Cabin is entered via an arched cherry door. The queen size berth sits on centerline with an upholstered headboard set upon a mirrored panel off the forward bulkhead. Twin halogen reading lights are above.

Two large cherry storage drawers lie at the foot of the berth. There is rope lighting around the cherry keeper for the custom Innerspring mattress. Built in cherry countertops both port and starboard serve as nightstands. Above is one fixed dead light with drapes to both port and starboard. Above the shades on either side are four cherry storage cabinets to supplement the cabin's abundant storage.

Aft to port is a custom expanded cedar lined double door hanging locker and access the Forward Head.

To starboard is a matching custom expanded double door cedar lined hanging locker.

On the aft bulkhead are three cherry drawers with a cherry counter above. Above this is a built in Sharp 19" LCD TV. The sole has access to the forward bilge and bow thruster.

Under the berth are two Bose 191 speakers linked to the Salon's Bose Lifestyle 48 system and the disconnect switch for the bow thruster. Overhead are five halogen mini spots on a dimmer and a Bomar deck hatch with an Ocean Air sliding screen and shade.

Also in this cabin are digital AC controls, a central vacuum outlet and a CO monitor. (2) Spare props are mounted under the VIP berth.

Forward Deck

- Heavy Duty stainless steel bow rails w/welded stainless steel lifeline
- Stainless steel anchor pulpit w/bow roller
- 88 lb. Delta stainless steel anchor
- Maxwell 3500 VW Windlass w/150' high tensile chain
- Up & down foot switches for windlass
- Round Bomar hatch to access chain locker w/cover
- Freshwater wash down in bow anchor locker
- Heavy duty rub rail
- Dual spring line cleats
- International navigation lights
- Air horn
- Dual deck fills for fuel port & starboard allows single side filling
- Removable stainless steel burgee pole
- Stainless steel hand rails at bow cushion area
- Black Textulene wrap around windshield cover incl. port & starboard side windows to Galley
- White Stamoid windshield cover - also black cover
- Frameless cabin side windows
- Stainless steel sliding boarding gates port & starboard midship
- Raised fiberglass toe rail for safety
- Round Bomar deck hatch into VIP Cabin w/white cover
- House side stainless steel handrails
- (6) Large dead lights into Master Cabin
- (2) Teak Tread steps to side deck port & starboard w/step lights
- Hailer horn
- (2) Windshield wipers & washers w/covers
- Jabsco spotlight, remote controlled
- (4) Stainless steel fender baskets
- (6) 12" Fenders

Aft Deck

- Teak sole over fiberglass decks
- Covered stern cleats w/fairleads w/removable padded Sunbrella step pad
- Built in fiberglass stairs (7) to Flybridge w/teak treads w/LED step lights
- (2) Hinged stainless steel gates to swim platform
- Custom high gloss cherry table w/stainless steel pedestals & cover
- Covered Aft Deck fully covered by Flybridge deck above
- (5) Stainless steel DC lights in Aft Deck overhead

- Built in Aft Deck seating for four w/removable cushions & cover
- Wet bar w/sink
- Miele electric BBQ grill to port under a hinged lid (never been used)
- Locker for storage under bar
- TV inlet w/cord
- Telephone inlet w/cord
- (6) ½" x 30' mooring lines
- 750 lb. Capacity hydraulically operated swim platform for tender storage
- Huge full beam Lazarette
- Bose stereo speakers
- Pressure water inlet
- Deck waste pump out plate
- Hot & cold shower in custom cabinet to starboard
- (2) Stainless steel support poles to Boat Deck
- Raymarine Aft Deck cameras, one forward, one aft
- Custom watertight entry door from swim platform into Crew Cabin (\$9200.00)
- Stainless steel porthole on port & starboard side of Aft Deck seat into Lazarette
- Freshwater wash down w/hose in starboard side custom locker
- (2) Custom lockers in transom pylasters
- Custom storage under Flybridge steps
- Curved Trend stainless steel trimmed dual entry doors, custom made to open in center
- Tender tie downs
- Pull out boarding ladder under swim platform
- 2008 Avon tender RIB w/50 HP Honda 4 cycle outboard motor
- Port & starboard grab rails over side deck entryways
- Custom starboard side engine controls w/bow thruster controls in hidden cabinet on starboard pylaster
- Removable custom spray curtains port & starboard
- Textulene 3 side enclosure zip together, can install one, two or three sides as needed.

Flybridge

The Flybridge of **DAMSELLE** was designed with enclosed air conditioned cruising in mind. The owner custom ordered a full length fiberglass hardtop and is the only 62' Neptunus built as such.

Access is via teak steps to starboard. A fold down hatch gives easy access to the area furthest aft of the Flybridge seating and keeps in the cool air!

J shaped seating is aft and to port. Six to eight people are accommodated comfortably. A varnished teak table with cover on twin polished stainless steel pedestals offers dining with a fantastic view! Six flush mount cup holders are built into the table's inboard edge.

A large bar with a two tone Corian top is next forward. There is a stainless steel under mount sink, a removable ice bucket with cover, two storage cabinets and a bank of custom divided drawers behind a cabinet door aft. A plexi bottle/cup holder retains eleven bottles or cups.

The sole of the bridge is nonskid fiberglass covered with removable carpet.

Another bar area with a Norcold refrigerator, additional storage and a Raritan stainless steel icemaker with a Corian countertop is to starboard.

Bridge Equipment includes:

- Custom fiberglass oversize hardtop to cover seating forward of helm
- (4) Bose stereo speakers
- A stainless railing aft of the seating area
- Removable stainless steel flag pole w/cover
- Northstar open array radar
- KVH Tracvison 4 sat dome
- Black & tinted Plexi Venturi windscreen
- Neptunus Signature sun lounge forward of helm on Flybridge w/removable cushions & cover
- Upholstered two person helm chairs w/fold down footrests to port
- Covers for all Flybridge seating
- GFCI outlet at aft davit for battery charger hookup
- Stainless steel hinged safety gate at top of step
- AC vents at helm
- Overhead hatch w/shade & screen
- Red overhead non glare nightlight
- (6) Overhead lights in hardtop
- Bose SA3 stereo speakers, remote control & link to Lifestyle 48 system in Salon
- Forward facing LED deck light
- (2) 16,000 BTU Marineair air conditioners
- (3) Side EZ2CY enclosures
- Aft clear vinyl 3 panel enclosure w/U Zip on centerline
- (2) Crown Ltd. custom helm chairs on fiberglass pedestal with fold down footrests at starboard side
- Custom hinged gate at top of stairs

Flybridge Navigation Equipment

- (2) CAT LCD gauge panels for main engines
- (2) CAT electronic clutch & throttle controls
- (2) Northstar 8000 i 12" DGPS plotter /sounder/Sirius weather displays

- Ritchie 5" Powerdamp compass
- Simrad AP 25 autopilot head
- Raymarine ST60 Tridata depth/speed log
- (2) Wema electric fuel gauges
- ITT Jabsco searchlight controls
- Vetus bow thruster controls (15 hp)
- Bennett trim tab controls w/indicators
- Icom IC-M604 VHF radio w/DSC
- Bilge pump controls w/(3) digital pump readouts
- Teleflex tilting helm wheel w/cover
- Fireboy fire system override controls
- Windlass controls
- 12V DC outlet
- Clarion CMD6 AM/FM/CD stereo w/dedicated Clarion speakers
- Generator on indicator light
- Burlwood dash panels
- Portside start/stop controls, engine controls as wing controls
- Helm cover
- Power assist hydraulic steering
- Fuel transfer/timer switch
- CCTV Camera switch gear - controls 4 cameras
- CAT Start/stop key switches
- Raymarine monitor camera facing bow used on CCTV system
- Port & starboard sliding Textulene sun shades
- AC vents at helm
- CAT emergency backup controls
- (2) Access panels under helm
- 4'6" 6 KW Northstar open array scanner
- Dual GPS sensors

Engine Room

- Twin CAT C-18 1000 hp diesel engines
- Additional Soundown extensive noise reduction program at delivery
- Anti vibration mounts for engines & generators
- 15 hp Vetus 24 volt DC electric bow thruster
- (4) Automatic/manual bilge pumps w/"Ultra" bilge pump switches
- Head Hunter DC freshwater pump w/backup pump
- A.O. Smith 30 Gallon water heater

- (4) Fluorescent Engine Room lights(2) 110V GFCI outlets
- (2) 110V Engine Room fans
- FRP flooring between engines
- 3" Aquamet 22 stainless steel shafts
- Dripless shaft seals, newly installed
- Site tubes for both fuel tanks
- (2) Engine Room blowers 110V, (2) Engine Room blowers 12V
- 2" Heavy duty insulation material covered w/white aluminum perforated paneling
- Oil Exchanger oil change system for engines, transmissions & generator
- 30 lb. Fireboy automatic fire suppression system 700 cu. ft.
- Air filters on Engine Room air intakes
- Jabsco Vane Puppy fuel transfer pump
- Soundown gas/water separator for generator exhaust – “water drop muffler”
- Seastar hydraulic power steering system with single pump at starboard
- Marine Air 72,000 BTU chilled water air conditioning w/(7) air handlers & (3) compressors (new 2016)
- Dual Racor 1000 FG fuel filters w/vacuum gauges valves & quick drains for main engines
- (1) Racor 500 filter for generator
- 6 Step stainless steel & teak ladder to Engine Room from Aft Deck
- (2) Engine block heaters
- ZF 550A Transmissions w/1.97:1 reduction
- Airsep crankcase ventilation system
- 422 Gallon aluminum forward fuel tank
- 683 Gallon aluminum aft fuel tank
- Site gauges for both fuel tanks
- Oversize Groco sea strainer & sea valves for main engines
- (2) Aluminum baffled water tanks
- (1) Aluminum baffled waste tank
- Central vacuum system
- Electric fuel priming pump
- Macerator pump for waste tank w/timer switch
- Fiberglass wrapped single tube exhaust system
- Algae X Smart Fuel polishing system w/pump, filter, timer, magnets w/Smart controller SFC 50
- Algae X fuel conditioner magnets at tanks, LGX 1500 for engines, LGX 200 for generator
- Raymarine monitor camera used on CCTV system
- Stainless steel 5 drawer toolbox full of custom tools which will convey
- CAT expansion bottles for cooling system
- Fuel sep system (filtration)

Lazarette

As was much of the yacht, the Lazarette was custom fitted to include storage, mechanical

equipment and a toilet and sink which could allow a future owner to convert the space to the factory designed optional Crew Cabin.

Equipment includes:

- Transom access door
- Sea Recovery 800 GPD water maker (Aqua Matic model) with commercial pre filter & oil/water separator
- Raritan freshwater flush toilet
- Tool & custom spare parts cabinets
- Work bench w/vise
- Top loading chest freezer
- 12 Volt accessory outlet
- Stainless steel sink
- Rubber diamond plate flooring
- Custom storage shelves
- A Sea frequency converter 12 KVA - allows for any worldwide power save to supply boat's 60 HZ requirements.
- Fluorescent 110 volt lighting
- Spare Fortress anchor FX-23 w/vinyl coated chain
- 12 Volt outlet
- Huge inventory of spare engine & boat parts
- Lazarette recently repainted bright white

Electrical

- 110V/220V 60 Hz AC system
- 12V/24V DC system
- 24.3 kW CAT generator in sound shield, 1025 hours
- (3) Banks of 12 volt gel cell batteries separated by blocking diodes as follows:
- (2) 8D's (450 ah) for house 12V, (2) 4D's (360 ah) for engine starting 24V plus (2) 12 volt 4D batteries for winch & bow thruster (24V system)
- DC Digital voltmeter
- DC Digital amp meter
- AC Digital voltmeter w/dual positions to read each leg of power
- AC Digital amp meter w/dual positions to read each leg of power
- (20) Breaker protected 110 volt AC circuits
- (10) Breaker protected 220 volt AC circuits
- (44) Breaker protected DC circuits
- Central bonding system w/shaft brushes
- Centaur Victron Energy 30 amp 24 volt charger for engine batteries
- Centaur Victron Energy 200 amp 12 volt charger for house batteries

- (2) 50 amp Glendenning cord reels w/75' of cord each
- Generator "on" indicator light at Flybridge Helm & Lower Helm
- (5) Battery shutoff switches
- (2) Galvanic isolators
- Port engine alternator 85 amps, 28V
- Starboard engine alternator 135 amps, 14V
- (3) Gang centrally located GFCI's at main bus
- (2) Charles Smart Iso Boost 15 KVA transformers
- Generator start/stop & gauges at main electrical panel
- Water tank level indicator at main electrical panel
- Waste tank level indicator at main electrical panel
- ASEA Frequency 50/60 cycle converter - offers automatic conversion of any dockside power source anywhere in the world, into power tailored to the yacht's specific requirements (\$25,000)
- (2) 50 Amp Glendenning shore cord reels 2/75' of 50 amp 220 volt cord
- Xantrex True Charge battery charger & disconnect switch for thruster system located at thruster area

RIB Tender

2008 Avon Seasport 360 Deluxe 12' tender Beam 5' 8" Maximum payload 903 lbs. Honda 40 HP 4 stroke outboard New battery 1/17 Forward seat Seat forward of helm Console w/wheel steering Double bench behind helm Forward step pad Built in Navigation lights Padded helm wheel Full engine package (2) Fold down drink holders (3) Popup cleats Swim ladder Lifting bridle 12 Volt accessory outlet Motor cover Full boat cover

Construction Details

The boat is a composite construction using Kevlar Hybrid materials for superior strength and puncture resistance. Six longitudinal foam stringers and 20 transverse foam stringers enclosed with stitched woven roving, reinforce the entire hull bottom. The hull sides above the waterline are cored. The engine stringers run from stern to bow with steel top plates for engine mounting. The Deep (19.5 degrees) Vee Hull has been designed to ensure a vessel with excellent sea keeping qualities. Special attention has been given to a ratio between installed power, speed and fuel consumption. Two layers of Interlux 2000E primer beneath the bottom paint. Of special note is four layers of Copper coat ten year antifouling coating.

Remarks

DAMSELLE has had only one knowledgeable owner who custom ordered the boat with pages of

considerable upgrades, the expanded Flybridge hardtop being the most notable! **DAMSELLE** has been delivered to Ft. Lauderdale to sell. She is in outstanding condition from stem to stern. Many of the pieces of equipment have never been used. She is in “nearly new” condition! During construction and outfitting, special attention was given to noise control. Without a doubt **DAMSELLE** is the quietest yacht in her class. **DAMSELLE** has been constantly cared for by a full time crew.

Actual LOA is 65'4".

Exclusions

While every effort was made to list all pertinent included equipment aboard **DAMSELLE**, there are some personal belongings aboard. Prospective purchasers should assume any item not specifically mentioned herein will not convey at closing.

Disclaimer

The Company offers the details of this vessel in good faith but cannot guarantee or warrant the accuracy of this information nor warrant the condition of the vessel. A buyer should instruct his agents, or his surveyors, to investigate such details as the buyer desires validated. This vessel is offered subject to prior sale, price change, or withdrawal without notice.

Исключения

При продаже яхты исключаются личные вещи владельца.

Отказ от ответственности

Компания предоставляет описание судна или яхты добросовестно, но не может гарантировать точность этой информации, а также не ручается за техническое состояние. Покупатель должен проинструктировать своих агентов или оценщиков исследовать представленную информацию более подробно, по собственному желанию. Продажа судна или яхты, изменение цены или снятие с продажи будет происходить без предварительного уведомления.

ФОТОГРАФИИ

Salon Looking Forward



Salon Looking to Starboard



Salon Looking to Port



Salon Office Cabinet



Salon Office Cabinet



Salon Entertainment



Salon Looking Aft



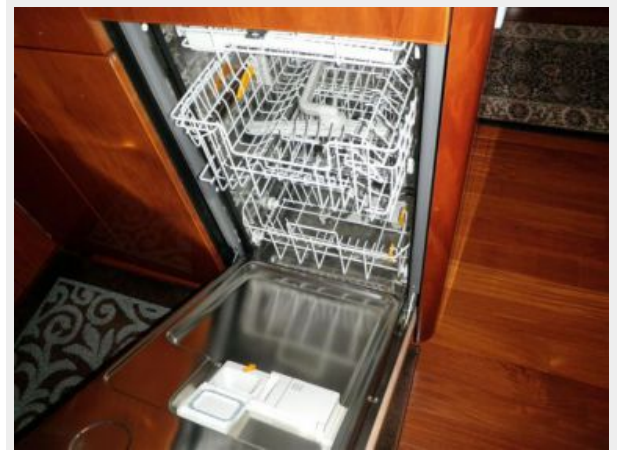
Galley Looking Forward



Galley Looking Aft



Dishwasher



Fitted Galleyware Drawer



Fitted Dish Drawer



Fitted Dish Drawer



Portside Galley Area



Portside Galley Area



Custom Glassware Storage & TV



Lower Helm



Main Deck Dining Area



Graphic Panel



Electrical Panel



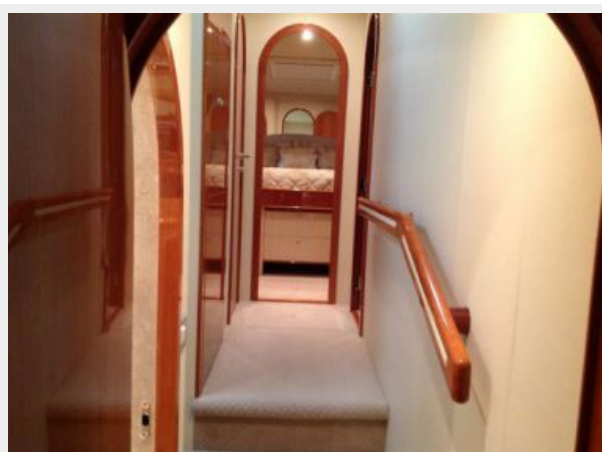
Electrical Panel



Companionway Laundry



Companionway



Master Looking Aft



Master Looking to Starboard



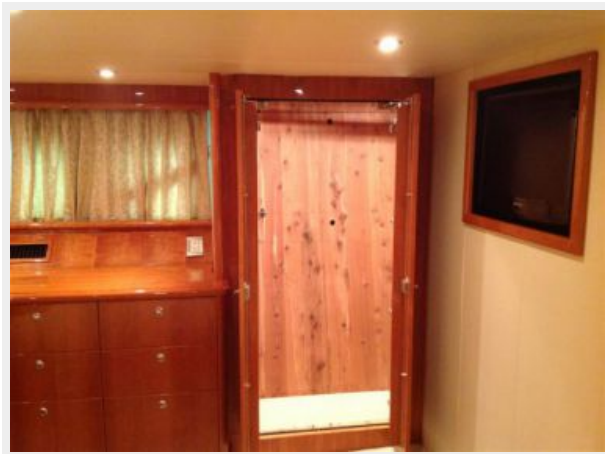
Master Looking Port Aft



Master Vanity



Master Looking Port Forward



Master Head



Owner Shower



Guest Head

Starboard Guest Cabin



VIP Looking Forward



VIP Looking Aft



VIP Closet



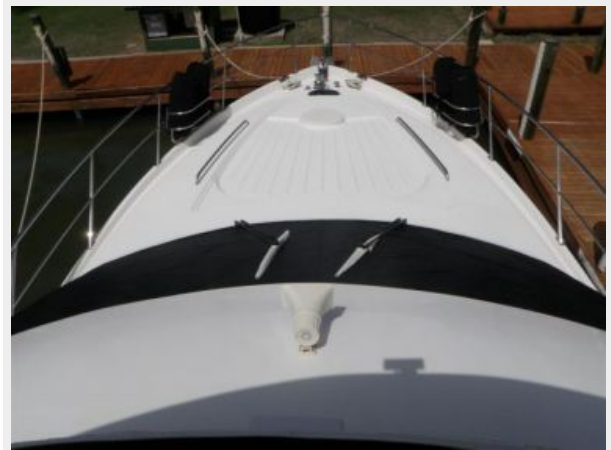
Thruster, Batteries & Charger



Spare Props Under VIP Berth



Foredeck



Walk Around Side Deck



Aft Deck



Aft Deck Table



Easy Access Flybridge Steps



Hidden Cockpit Controls



Aft Deck Grill



Aft Deck Camera



Flybridge Looking Forward



Flybridge Looking Aft



Flybridge Starboard Side Bar



Flybridge Portside Bar



Aft Flybridge Seating



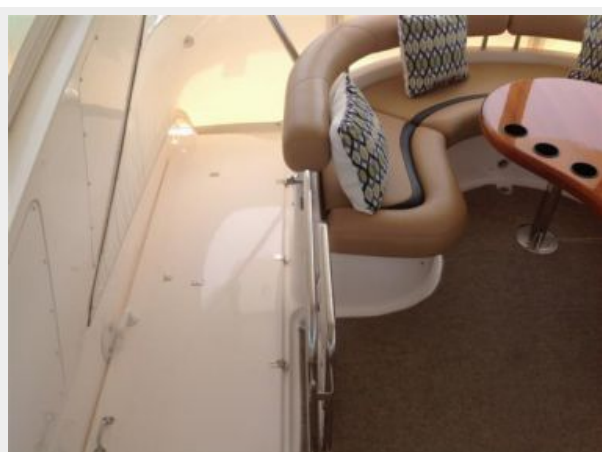
Flybridge Portside Helm & Controls



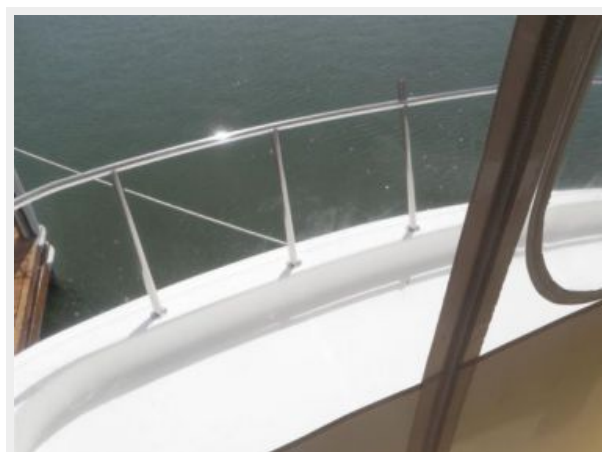
Flybridge Forward Seat



Flybridge Hatch Closed



Area Aft of Flybridge Seating



Helm



Helm



Helm Detail



Engine Room Access



Port Engine



Starboard Engine



Algae X Fuel Conditioner



Fuel System



5 Point Oil Change



Dripless Shaft Seals



24.3 KW CAT Generator



Lazarette Access



Lazarette Door



Lazarette to Port



Lazarette to Starboard



Sink



Watermaker



A SEA Frequency Converter



Freezer



Hydraulic Platform



Partially Deployed



12' Avon



12' Avon



10 Year Copper Coat Bottom Job



10 Year Copper Coat Bottom Job



Prop Speed



Alternate Profile



КОНТАКТЫ

Андрей Шестаков (Andrey Shestakov) – ведущий яхтенный брокер отдела продаж яхт и судов компании Shestakov Yacht Sales Inc. Официальный представитель Shestakov Yacht Sales Inc. для русскоговорящих клиентов в центральном офисе компании в Майами/Форт Лодердейл/Флорида/США.

Контактная информация

Email: andrey@shestakovyachtsales.com

Web: shestakovyachtsales.com

Телефоны

Краснодарский край: **+7(918)465-66-44**

США, Майами, Флорида: **+1(954)274-4435**

Время работы

Понедельник – Суббота: **9:00 - 21:00**
EDT

Воскресенье: **Закрето**

Адрес



Harbour Towne Marina, 850 NE 3rd St,
STE 213, Dania, FL 33004