

## FREEDOM — OCEAN YACHTS



**Builder:** [Ocean Yachts](#)

**Year Built:** 2008

**Model:** Motor Yacht

**Price:** PRICE ON APPLICATION

**Location:** United States

**LOA:** 58' 0" (17.68m)

**Beam:** 21' 7" (6.58m)

**Cruise Speed:** 32 Kts. (37 MPH)

Our experienced yacht broker, Andrey Shestakov, will help you choose and buy a yacht that best suits your needs **Freedom — Ocean Yachts** from our catalogue. Presently, at **Shestakov Yacht Sales Inc.**, we have a wide variety of yachts available on our sale's list. We also work in close contact with all the big yacht manufacturers from all over the world.

If you would like to buy a yacht **Freedom — Ocean Yachts** or would like help answering any questions concerning purchasing, selling or chartering a yacht, please call **+1(954)274-4435**

---

# TABLE OF CONTENTS

---

TABLE OF CONTENTS	2
SPECIFICATIONS	3
Overview	3
Basic Information	8
Dimensions	8
Speed, Capacities and Weight	9
Accommodations	9
Hull and Deck Information	9
Engine Information	9
PHOTOS	10
CONTACTS	21
Contact details	21
Telephones	21
Office hours	21
Address	21

# SPECIFICATIONS

---

## Overview

---

**Boat Name** Freedom **Dimensions** LOA: 58 ft 0 in Beam: 21 ft 7 in Displacement: 67469 lbs  
**Engines** Engine Brand: MTU Engine Model: 12V 2000 Cruising Speed: 32 knots **Tanks** Fresh Water Tanks: (250 Gallons) Fuel Tanks: (1100 Gallons) Holding Tanks: (75 Gallons)

### Saloon

- Teak hi-gloss wood interior
- Satin nickel interior hardware
- Steps & companionway runner
- 40" retractable LCD flat screen TV
- U-shaped lounge seating w/storage
- U-shaped dinette w/adjustable hi-gloss table
- Zoned A/C w/ reverse cycle heating
- Hi-gloss teak cocktail table ottoman w/storage
- Bose lifestyle 38 stereo system w/ CD player, DVD player, remote
- Wine chiller
- Wine rack
- Upholstered panels, valences & headliner
- Electric sliding salon door
- Overhead lighting
- Icon command mic
- Bamboo Amtico flooring at salon entrance & in galley & under dinette Icemaker
- Designer chair
- Telephone jack
- Clear salon cover
- Central vac system
- Carpeting with canvas runner
- Hi-gloss cherry wood interior
- Silhouette blinds

### Galley

- Insta hot water
- Trash compactor
- Recessed 3-burner stove
- Pressure fresh water system
- Microwave oven w/convection oven
- Sub-Zero under counter, drawer-style freezer
- (2) Sub-Zero under counter, drawer-style refrigerators
- Built in coffee maker

- Exhaust fan
- Amtico flooring
- Water tank gauge
- 20gal hot water heater
- Granite countertops w/ith ink
- Spacious drawers & cabinets
- Ground fault electrical outlets

### **Companionway**

- Clothes washer & clothes dryer
- Steps & companionway canvas runners
- Whisper walls
- Storage in brow

### **Master Stateroom**

- Private head access
- (2) Night stands with drawers
- Bose SA-3 stereo system with speakers
- 30" LCD Flat-screen TV with DVD player & remote
- Queen berth with Innerspring mattress & drawer storage
- (3) Hanging lockers
- Drawers & cabinets
- Vanity with mirror, stool
- Bedspread with (2) pillows & (2) shams

### **Master Head**

- Storage
- Amtico flooring
- Vacuflush head
- 24v & 110v ILghting
- 110v Ground fault outlets
- Towel bars
- Exhaust fan
- Mirrored medicine cabinet
- Vanity with corian countertop & sink
- Private shower with automatic enclosed sump pump & overhead lighting

### **Guest Stateroom - Amidship Port**

- Night stand
- (2) Pillows & (2) shams

- 20" LCD TV with DVD player
- Hanging locker
- Side-by-side twin berths with 5" foam mattresses, zippered covers & storage
- Filler to convert bed to a Queen size

### **Guest Stateroom - Forward**

- Ample storage
- Private head access
- Queen berth with innerspring mattress
- 20" LCD flat-screen TV with DVD player & remote
- Cabinets
- Deck hatch
- Hanging locker
- Bedspread with (2) pillows & (2) shams

### **Guest Head**

- Storage
- Amtico flooring
- Vacuflush head
- 24v & 110v lighting
- 110v ground fault outlets
- Towel bars
- Exhaust fan
- Mirrored medicine cabinet
- Vanity with corian countertop & sink
- Private shower with automatic enclosed sump pump & overhead lighting

### **Flybridge & Electronics**

- Courtesy lighting
- 120v electrical outlet
- Simrad AP2 autopilot
- (2) Icom IC M-504 VHF radios in overhead
- 4" Flush-mount compass
- U-shaped lounge seating
- Air conditioning with reverse cycle heat
- Pompanette prestige series Companion & helm chairs
- Aluminum ladder & aft safety rail with (6) rocket launchers (2) Insulated boxes; (1) freezer, (1) refrigerator
- EZ2CY 3-Sided wih aft enclosure
- 2kw Transducer
- KVH Trac Vision 4G

- Seatel Sat phone
- Drop down overhead electronics box & teaser reel box
- Fuel gauges
- Furuno RD-30
- Spreader lights, molded in
- Electrical sub-panel
- 24 Volt bow thruster
- Custom teak helm pod with single level controls
- Engine displays
- Engine back up controls
- Hardtop underside Sky Blue
- Northstar 10kw radar
- (2) Northstar 6100I 15" color plotters
- Northstar 491 Sounder box
- 406 Epirb
- Clarion XM stereo
- Built in drink holders

## Cockpit & Fishing

- Miya Epoch teaser reels
- Boarding stepbox
- Refrigerated fish box
- Cockpit courtesy lighting
- Transom door & hinged gate
- Molded live bait well in transom
- (2) Insulated fish boxes with pump out, 1 refrigerated
- Refrigerated drink box in Mezzanine
- Large tackle drawers under Mezzanine
- Wing rod holders
- Rupp riggers, Rupp center rigger (6) Rod holders (swivel)
- Lazarette access (2) Stereo speakers
- Under-hatch dunnage bin
- Molded fiberglass, self-bailing Cockpit
- Freshwater, saltwater wash down systems
- Teak decks and coverboards
- Northstar 6000I
- Pompanette teak chair with custom table

## Deck

- Deluxe air horns
- (2) Hawse pipes
- Lewmar Concept II windlass

- Aluminum bow rail with pennant staff
- Rope locker with fresh water washdown
- Aluminum, powder-coated window rails
- Navigation lights
- Tinted safety glass
- Forward deck hatch
- Dockside water connection
- 12" cleats - (3) bow, (4) spring, (2) stern
- Quick-action ball valve seacocks on all through-hull fittings below waterline
- Custom sky blue hull

## Electrical System

- 120v electrical outlets
- SSB radio ground screen
- Automatic battery charger
- Dyna plate grounding system
- 21.5kw water cooled generator
- Internal electrical bonding system
- Back lighting on electrical panel & Flybridge instruments
- Battery parallel switch
- 24v & 120v lighting throughout
- (2) 50' 50A / 240v shore power cords w/automatic cord reels
- Electrical panel w/circuit breakers, voltmeters & battery condition indicator

## Engine & Mechanical

- Trim tabs
- Power steering
- Electrical outlet
- 24v bow thruster
- 42 gal holding tank
- Engine synchronizer
- (2) Aquamet 22 shafts
- Bronze rudders & struts
- (2) Engine room blowers
- Anti-fouling bottom paint
- (2) Aquamet 22 propellers
- 24v & 12v engine room lighting
- Automatic fire extinguisher system
- Large wedge-type raw water sea strainers
- Awlgripped engine room, lazarette & bilges
- Electric oil transfer system (engines & generator)
- Smoke detector

- Fiberglass mufflers
- Fuel transfer pump
- Engine hour meters
- (2) 4" bilge blowers
- Engine alarm system
- Emergency bilge pump
- High bilge water alarm
- Central main drain (aft)
- Electric fuel priming pump
- Carbon monoxide detector
- (4) Automatic bilge pumps
- Acoustical, thermal insulation
- Fresh water spigot in engine room
- Fuel filters (main engines & generator)
- Quick-action ball valve fuel shut-off valves
- Heat recovery bottles (engines & generator)
- 24v enclosed shower sump pump (automatic)

**Disclaimer** The Company offers the details of this vessel in good faith but cannot guarantee or warrant the accuracy of this information nor warrant the condition of the vessel. A buyer should instruct his agents, or his surveyors, to investigate such details as the buyer desires validated. This vessel is offered subject to prior sale, price change, or withdrawal without notice.

---

## Basic Information

---

**Category:** Motor Yacht

**Model Year:** 2008

**Year Built:** 2008

**Country:** United States

---

## Dimensions

---

**LOA:** 58' 0" (17.68m)

**Beam:** 21' 7" (6.58m)



---

## Speed, Capacities and Weight

---

**Cruise Speed:** 32 Kts. (37 MPH)

**Displacement:** 67469 Pounds

**Water Capacity:** 250 Gallons

**Holding Tank:** 75 Gallons

**Fuel Capacity:** 1100 Gallons

---

## Accommodations

---

**Total Cabins:** 3

---

## Hull and Deck Information

---

**Hull Material:** Fiberglass

---

## Engine Information

---

**Manufacturer:** MTU

**Model:** 12V 2000

# PHOTOS





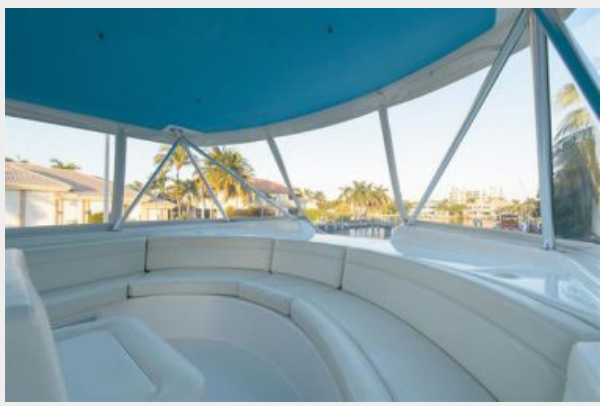










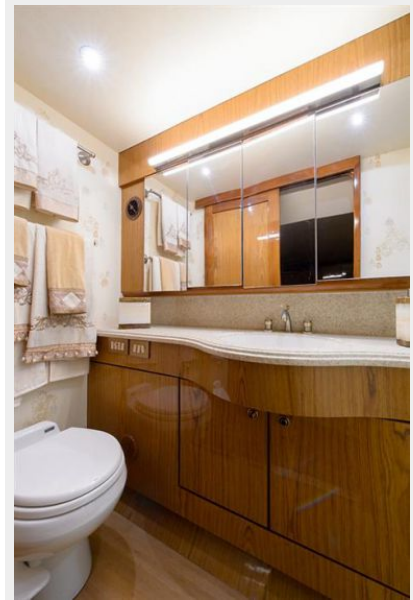


















# CONTACTS

---

Andrey Shestakov, leading yacht broker of the sales department of Shestakov Yacht Sales Inc. Shestakov Yacht Sales Inc., the official representative of the Miami/Fort Lauderdale FL headquarters.

## Contact details

---

Email: [andrey@shestakovyachtsales.com](mailto:andrey@shestakovyachtsales.com)

Web: [shestakovyachtsales.com/en/](http://shestakovyachtsales.com/en/)

## Telephones

---

USA: +1(954)274-4435

## Office hours

---

Monday – Saturday: **9:00 - 21:00** EDT

Sunday: **closed**

## Address

---



Harbour Towne Marina, 850 NE 3rd St,  
STE 213, Dania, FL 33004