

LOVELY LAURA — PRINCESS YACHTS



Builder: PRINCESS YACHTS

Year Built: 2011

Model: Motor Yacht

Price: PRICE ON APPLICATION

Location: United States

LOA: 62' 0" (18.90m)

Beam: 16' 5" (5.00m)

Max Draft: 4' 6" (1.37m)

Our experienced yacht broker, Andrey Shestakov, will help you choose and buy a yacht that best suits your needs **Lovely Laura — PRINCESS YACHTS** from our catalogue. Presently, at **Shestakov Yacht Sales Inc.**, we have a wide variety of yachts available on our sale's list. We also work in close contact with all the big yacht manufacturers from all over the world.

If you would like to buy a yacht **Lovely Laura — PRINCESS YACHTS** or would like help answering any questions concerning purchasing, selling or chartering a yacht, please call **+1(954)274-4435**

TABLE OF CONTENTS

TABLE OF CONTENTS	2
SPECIFICATIONS	4
Basic Information	4
Dimensions	4
Speed, Capacities and Weight	4
Accommodations	4
Hull and Deck Information	4
Engine Information	4
DETAILED INFORMATION	5
2011 62 Princess	5
Exclusions	11
Disclaimer	11
PHOTOS	12
Salon	12
Salon	12
Salon	12
Dinette	12
Dinette	12
Dinette	12
Galley	13
Galley	13
Galley	13
Master Stateroom	13
Master Stateroom	13
Master Stateroom	13
Master Stateroom	14
Master Stateroom	14
Master Stateroom	14

Master Head	14
Master Head	15
Forward Stateroom	15
Forward Stateroom	15
Forward Stateroom	15
Forward Head	16
Forward Head	16
Washer Dryer	16
Guest Stateroom	16
Pilothouse	17
Pilothouse	17
Pilothouse	17
Pilothouse	17
Cockpit	17
Cockpit	17
Cockpit	18
Cockpit	18
Cockpit	18
Stern	18
Stern	18
CONTACTS	19
Contact details	19
Telephones	19
Office hours	19
Address	19

SPECIFICATIONS

Basic Information

Category: Motor Yacht

Model Year: 2011

Year Built: 2011

Country: United States

Dimensions

LOA: 62' 0" (18.90m)

Beam: 16' 5" (5.00m)

Max Draft: 4' 6" (1.37m)

Speed, Capacities and Weight

Water Capacity: 132 Gallons

Fuel Capacity: 900 Gallons

Accommodations

Total Cabins: 3

Hull and Deck Information

Hull Material: Fiberglass

Engine Information

Engines: 2

Manufacturer: Caterpillar

Model: C-18

Engine Type: Inboard

Fuel Type: Diesel

DETAILED INFORMATION

2011 62 Princess

Highlights Include:

C18 CATs with 1150 hp New Teak Decks September 2015 Yacht Controller

New Garmin Electronics 15" (8215 Glass Helm Series)

HD SAT TV

SAT Weather, SAT Radio, AIS

Bow and Stern Thruster

Sea Recovery Watermaker

Gost Remote Monitoring System

Underwater Lights

11' Tender with 20hp 4-Stroke Yamaha

Walnut Interior with High Gloss

Accommodations

Wood interior: American walnut with gloss finish

All cabins feature opening and/or fixed portholes, 240v power points and air conditioning

All bathrooms feature opening portholes, fresh water Vacuflush toilets with holding tank and 240v shaver points

Upper Salon

Gost system – remote monitoring

Ipod docking station

TV 32" LCD on lift

Bose Lifestyle 35 home theater system

Full air-conditioning

U-shaped sofa with coffee table

Refrigerator, icemaker bottle & glass storage

Blinds, curtains or sunscreens to all windows and doors

Overhead down lighters

Electric hardtop sliding roof

Stainless-steel framed triple sliding salon doors Central vac

Galley

Dishwasher

Garbage disposal

Solid surface worktop

Stainless-steel sinks with Monobloc mixer tap

Electric cooktop

Exhaust fan

Combination microwave/conventional

Full height fridge/freezer

Storage cupboards, drawers and lockers

Waste bin

Combination washer/dryer and storage area below stairway

Full Beam Master Stateroom

Walk around Queen bed

TV 26" LCD with stereo CD/DVD

Entertainment system

Dressing table

Walk-in wardrobe

Sofa

Drawers, cupboards and storage lockers

Overhead and individual berth lights

Master Head

En Suite Bathroom

Avonite counter tops: Kokoura

Washbasin with Monobloc mixer tap

Separate stall shower

Exhaust fan

Mirror

Storage lockers

VIP Stateroom

TV 19" LCD stereo/CD and DVD

Large double bed with drawers below

Dressing table with stool

Wardrobe with shelves

Drawers, cupboards and storage lockers

Overhead and individual berth lights

Deck hatch and fixed skylights with integrated TV/DVD screen and blind

VIP Head

En Suite Bathroom

Counter tops Avonite: Kokoura

Washbasin with Monobloc mixer tap

Separate stall shower

Exhaust fan

Mirror

Storage lockers

Starboard Guest Stateroom

Two full-size single berths with sliding berth conversion to double

Wardrobe with shelves

Storage lockers

Reading lights and individual berth lights

Cockpit

Cockpit speakers with amp and remote

Teak decking

U-shaped seating/dining area to starboard with folding teak table

Cockpit lighting

Cockpit and seat covers

Cockpit wetbar including sink, refrigerated coolbox, barbecue, storage, and waste bin

Electro-hydraulically opening garage with storage for tender or jet ski

Electric winch dinghy retrieval system

Life raft storage

Access hatch to lazarette stowage space

Stern camera Hydraulic swim platform

Hot and cold transom shower,

Foldaway swimming ladder and teak decking

Tender, 11' West Marine with 15 hp Yamaha

Helm Position

Yacht Controller system

Bow and stern thruster

Twin helm seats with electric adjustment

AC/DC control systems panel

Electric opening window Port and Starboard

Instrument panel

Full engine instrumentation

Fuel gauges

Electronic engine and gear shift controls

Power-assisted electro-hydraulic

Steering with adjustable steering wheel

Rudder position indicator

Remote control searchlight

High-speed compass

Chart area with storage

Twin windscreen wipers

Windscreen freshwater pressure wash

Bilge pump controls with visual pump running indicators

Fuel contamination alarm system

Air-conditioning outlets

12v outlet

Red night lighting

Navigation

New Garmin electronics 15" (8215 glass helm series) GPS/Sounder/Radar Garmin autopilot

SAT weather, SAT radios, AIS

Yacht Controller system

Simrad VHF

Mechanical

Twin C18A 1150 hp CATs

17.5 kW Generator, upgrade

Bow and stern thruster

Sea Recovery water maker

Underwater lights

Oil changer for engines and generator

Voltage stabilizer transformer (2)

Glendinning Cablemaster (2)

Air Horns

Custom storage shelves and racks in Lazarette

Alarm system

Custom stainless VHF antenna mounts

Exclusions

Owner's personal belongings.

Disclaimer

The Company offers the details of this vessel or yacht in good faith but cannot guarantee or warrant the accuracy of this information nor warrant the condition of the vessel. A buyer should instruct his representatives, agents, or his surveyors, to investigate such details as the buyer desires validated. This vessel or yacht is offered subject to prior sale, price change, or withdrawal without notice.

PHOTOS

Salon



Salon



Salon



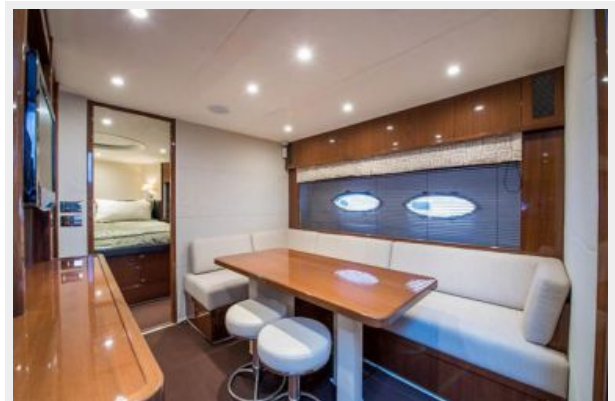
Dinette



Dinette



Dinette



Galley



Galley



Galley



Master Stateroom



Master Stateroom



Master Stateroom



Master Stateroom



Master Stateroom



Master Stateroom



Master Head



Master Head



Forward Stateroom



Forward Stateroom



Forward Stateroom



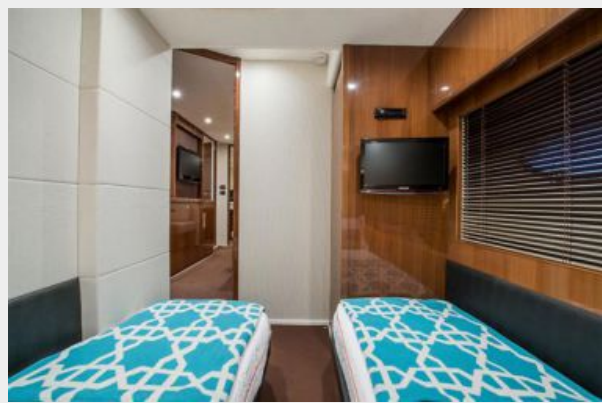
Forward Head



Forward Head



Guest Stateroom



Washer Dryer



Pilothouse



Pilothouse



Pilothouse



Pilothouse



Cockpit



Cockpit



Cockpit



Cockpit



Cockpit



Stern



Stern



CONTACTS

Andrey Shestakov, leading yacht broker of the sales department of Shestakov Yacht Sales Inc. Shestakov Yacht Sales Inc., the official representative of the Miami/Fort Lauderdale FL headquarters.

Contact details

Email: andrey@shestakovyachtsales.com

Web: shestakovyachtsales.com/en/

Telephones

USA: +1(954)274-4435

Office hours

Monday – Saturday: **9:00 - 21:00** EDT

Sunday: **closed**

Address



Harbour Towne Marina, 850 NE 3rd St,
STE 213, Dania, FL 33004