

## OOH LA LA — CRUISERS YACHTS



**Builder:** [Cruisers Yachts](#)

**Year Built:** 2006

**Model:** Motor Yacht

**Price:** PRICE ON APPLICATION

**Location:** United States

**LOA:** 45' 0" (13.72m)

**Beam:** 15' 4" (4.67m)

**Min Draft:** 3' 3" (0.99m)

**Cruise Speed:** 24 Kts. (28 MPH)

**Max Speed:** 30 Kts. (35 MPH)

Our experienced yacht broker, Andrey Shestakov, will help you choose and buy a yacht that best suits your needs **OOH LA LA — Cruisers Yachts** from our catalogue. Presently, at Shestakov Yacht Sales Inc., we have a wide variety of yachts available on our sale's list. We also work in close contact with all the big yacht manufacturers from all over the world.

If you would like to buy a yacht **OOH LA LA — Cruisers Yachts** or would like help answering any questions concerning purchasing, selling or chartering a yacht, please call **+1(954)274-4435**

# TABLE OF CONTENTS

TABLE OF CONTENTS	2
SPECIFICATIONS	5
Overview	5
Basic Information	5
Dimensions	5
Speed, Capacities and Weight	5
Accommodations	6
Hull and Deck Information	6
Engine Information	6
DETAILED INFORMATION	7
Bridge Deck	7
Salon & Galley	7
Master Stateroom	7
VIP Stateroom - Forward	7
Guest Stateroom (Starboard)	8
Electrical Equipment	8
Mechanical Equipment	8
Deck Equipment	8
Safety & Fire Protection	8
Exclusions	8
Disclaimer	8
PHOTOS	10
Port Side	10
Port Bow	10
Aft Port Side	10
Starboard Side	10
Tender w/new 6 hp 4 Stroke stored at owner's home	10
Starboard Side	10

Aft/Swim Platform	11
Fore Deck	11
Fore Deck	11
Fore Deck Equipment	11
Side Deck	11
Cockpit	11
Cockpit	12
Cockpit/Wet Bar/Icemaker	12
Cockpit	12
Helm	12
Helm Seating	12
Helm	12
Electronics	13
Electronics	13
Salon Looking Aft	13
Salon	13
Salon	13
Galley	13
Galley/Refrigerator	14
Galley/Freezer	14
Master Stateroom	14
Master Stateroom	14
Master Stateroom Vanity	15
Master Head	15
Shower	15
VIP Stateroom	15
VIP Stateroom	16
VIP Head	16
VIP Head	16

---

Third Berth	16
Laundry	17
Engine Room	17
Engine Room	17
Engine Room	17
Engine Room	17
Engine Room	17
Engine Room/Battery Master Switches	18
Engine Room	18
<b>CONTACTS</b>	<b>19</b>
Contact details	19
Telephones	19
Office hours	19
Address	19

---

# SPECIFICATIONS

---

## Overview

---

One of the first of the 2006 models to receive the new Upgrade to Volvo Penta D9A-500 series engines!! The Cruisers 455 Motoryacht is all the living space a full-beam, aft master motoryacht should be wrapped in a fast, nimble and stylish modern package. With the range, tankage and amenities to be a safe, comfortable coastal cruiser from Canada to Florida (she has) and the speed, agility and draft to be a weekender and vacation condo from the Chesapeake to the Bahamas. (24kts cruise!) All the comforts of home in a solid package that lives like a proper yacht and thinks it's a sport cruiser.

This is an original owner, well above average condition, yacht that has been cruised from Canada to the Bahamas. She shows like new and with her larger, more advanced engine package, outperforms other sisterships of the same or earlier years. Her experienced owners are downsizing and the aggressive pricing should demonstrate that the owner is serious about selling her.

## Basic Information

---

**Category:** Motor Yacht

**Sub Category:** Sedan Cruiser

**Model Year:** 2006

**Year Built:** 2006

**Country:** United States

## Dimensions

---

**LOA:** 45' 0" (13.72m)

**Beam:** 15' 4" (4.67m)

**Min Draft:** 3' 3" (0.99m)

**Clearance:** 18' 8" (5.69m)

## Speed, Capacities and Weight

---

**Cruise Speed:** 24 Kts. (28 MPH)

**Max Speed:** 30 Kts. (35 MPH)

**Displacement:** 36000 Pounds

**Water Capacity:** 135 Gallons

**Holding Tank:** 100 Gallons

**Fuel Capacity:** 250 Gallons

---

## Accommodations

---

**Total Cabins:** 3

**Total Heads:** 2

---

## Hull and Deck Information

---

**Hull Material:** Fiberglass

**Hull Color:** White

---

## Engine Information

---

**Engines:** 2

**Manufacturer:** Volvo Penta

**Model:** D9A-500

**Engine Type:** Inboard

**Fuel Type:** Diesel

---

## DETAILED INFORMATION

---

### Bridge Deck

---

The large, open bridgedeck features side-by-side helm seating with a full array of Electronics.

Raymarine E-120 and E-80 Multi-function Displays Sirius Satellite Weather Overlay Engine Room and Stern Cameras Simrad 25 Autopilot w/ WR20 Remote Faria Depth Sounder Platinum Navionics US-Canada East Coast electronic chart chips Great Loop charts Weems and Plath Barometer, Clock, Thermometer The Upper deck is also an expansive lounging and entertainment area with seating for 8-10 guests, wet-bar, ice maker and a complete hardtop with sunroof hatches and a new Strataglass enclosure. The entire upper deck is Air Conditioned for warm days. In addition to navigation electronics the upper deck has a Fusion MPS IP1600 with Sirius surrounded by speakers.

### Salon & Galley

---

The main living area features a large wrap-around sofa and a comfortable dedicated dining booth. The galley is up and very well equipped so that the cook doesn't miss the dinner party.

Princess 2-burner Gourmet Euro Kera electric cooktop Tappan Convection Oven/Microwave Fisher-Paykel drawer dishwasher Double stainless sink Tundra 12/24 volt refrigerator/freezer Built in Coffee Maker Granite Countertops Tons of storage and Teak Sole Entertainment Audio Visual includes a new Toshiba Flat Screen TV with a Surround Sound Theatre system and a Blaupunkt DVD-ME2 CD and MP3 System which connects to each stateroom.

### Master Stateroom

---

The master is aft and full-beam huge. A queen bed is surrounded by Cherry cabinetry. There is an extra-large rear window, a Cedar-lined hanging closet, tons of storage and a separate vanity.

Master Head is ensuite with a large jacuzzi tub/shower with separate opening French doors to the stateroom.

### VIP Stateroom - Forward

---

Centerline Queen Berth with overhead hatches for breezes at anchor and port lights for natural light. Your guests also have an ensuite head with separate shower, a cedar-lined closet and a private Flat Screen TV with Blaupunkt DVD/CD/MP3 player.

---

## Guest Stateroom (Starboard)

---

For extra crew and kids, there is a starboard stateroom with twin berths that form a queen when needed and a separate locker and storage for their gear.

The Starboard stateroom also includes a Splendid 2000 S Combo washer-dryer

---

## Electrical Equipment

---

Onan 11.5 kw Generator with soundshield (460hrs) Perko Battery Switches 2 New House Batteries 2 Starting Batteries Intell-Power PD2050 Charging System Glendinning Cablemaster and 50 amp shore cord

---

## Mechanical Equipment

---

Twin Disc Gearboxes Volvo Penta Electronic Engine Controls Dripless Shaft Seals Seastar Hydraulic Steering System Twin Racor 900 Fuel Filters for engines Racor 500 for Generator Algae-X fuel conditioning System Fuel Manifold Side-Power Bow Thruster Bennett Trim Tabs Sealand Sanigard holding tank vent filter Central Vac system Tank-Watch holding tank monitor

---

## Deck Equipment

---

9' West Marine RIB Mercury 6 hp 4-stroke outboard w/stern mounting bracket Hurley H2O Davit System on Stern Maxwell anchor windlass with foot controls Sun pad on Fore deck Swim platform lockers for snorkeling equipment Fresh hot/cold shower on transom Transom Swim Ladder

---

## Safety & Fire Protection

---

Fireboy Xintex FE241 Engine room fire suppression system Fireboy remote engine shutdown system Seakey SOS Automated System Engine room and Stern Cameras

---

## Exclusions

---

Owner's personal belongings.

---

## Disclaimer

---

The Company offers the details of this vessel or yacht in good faith but cannot guarantee or



warrant the accuracy of this information nor warrant the condition of the vessel. A buyer should instruct his representatives, agents, or his surveyors, to investigate such details as the buyer desires validated. This vessel or yacht is offered subject to prior sale, price change, or withdrawal without notice.

# PHOTOS

**Port Side**



**Port Bow**



**Aft Port Side**



**Starboard Side**



**Starboard Side**



**Tender w/new 6 hp 4 Stroke stored at owner's home**



**Aft/Swim Platform**



**Fore Deck**



**Fore Deck**



**Fore Deck Equipment**



**Side Deck**



**Cockpit**





**Cockpit**



**Cockpit/Wet Bar/Icemaker**



**Cockpit**



**Helm**



**Helm Seating**



**Helm**



**Electronics**



**Electronics**



**Salon Looking Aft**



**Salon**



**Salon**



**Galley**



**Galley/Freezer**



**Galley/Refrigerator**



**Master Stateroom**



**Master Stateroom**





### Master Stateroom Vanity



### Master Head



### Shower



### VIP Stateroom



**VIP Stateroom**



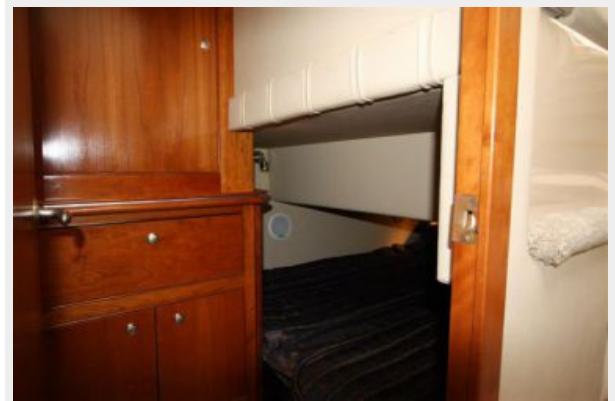
**VIP Head**



**VIP Head**



**Third Berth**





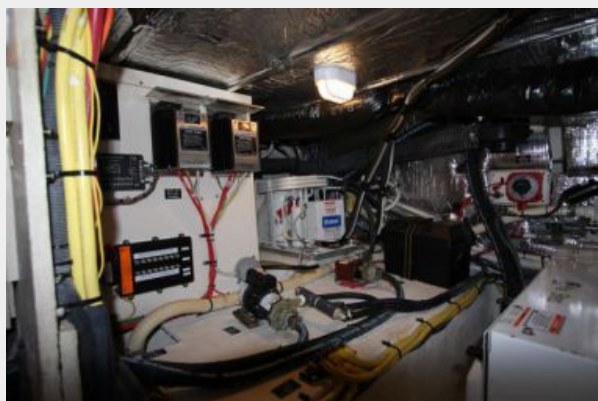
**Laundry**



**Engine Room**



**Engine Room**



**Engine Room**



**Engine Room**



**Engine Room**



### Engine Room/Battery Master Switches



### Engine Room



---

# CONTACTS

---

Andrey Shestakov, leading yacht broker of the sales department of Shestakov Yacht Sales Inc. Shestakov Yacht Sales Inc., the official representative of the Miami/Fort Lauderdale FL headquarters.

---

## Contact details

---

Email: [andrey@shestakovyachtsales.com](mailto:andrey@shestakovyachtsales.com)

Web: [shestakovyachtsales.com/en/](http://shestakovyachtsales.com/en/)

---

## Telephones

---

USA: +1(954)274-4435

---

## Office hours

---

Monday – Saturday: **9:00 - 21:00** EDT

Sunday: **closed**

---

## Address

---



Harbour Towne Marina, 850 NE 3rd St,  
STE 213, Dania, FL 33004