

FREE SPIRIT — HATTERAS



Builder: HATTERAS

Year Built: 1989

Model: Motor Yacht

Price: PRICE ON APPLICATION

Location: United States

LOA: 80' 0" (24.38m)

Beam: 18' 7" (5.66m)

Max Draft: 5' 3" (1.60m)

Our experienced yacht broker, Andrey Shestakov, will help you choose and buy a yacht that best suits your needs **Free Spirit — HATTERAS** from our catalogue. Presently, at Shestakov Yacht Sales Inc., we have a wide variety of yachts available on our sale's list. We also work in close contact with all the big yacht manufacturers from all over the world.

If you would like to buy a yacht **Free Spirit — HATTERAS** or would like help answering any questions concerning purchasing, selling or chartering a yacht, please call **+1(954)274-4435**

TABLE OF CONTENTS

TABLE OF CONTENTS	2
SPECIFICATIONS	4
Basic Information	4
Dimensions	4
Speed, Capacities and Weight	4
Accommodations	4
Hull and Deck Information	4
Engine Information	4
DETAILED INFORMATION	5
Remarks	5
Cockpit	5
Aft Deck	5
Salon / Dining	6
Galley	6
Lower Helm	6
Master Stateroom	7
Companionway	7
Port VIP Stateroom	7
Starboard Guest Stateroom	8
Crew Quarters	8
Foredeck	9
Flybridge	9
Engine Room	10
Lazarette	10
Exclusions	11
Exclusions	11
Disclaimer	11
PHOTOS	12

Aft Deck	12
Aft Deck	12
Salon	12
Formal Dining	12
Galley	12
Formal Dining	12
Galley / Dinette	13
Galley	13
Pilothouse	13
Pilothouse	13
Pilothouse	13
Master Stateroom	13
VIP Stateroom	14
Guest Stateroom	14
Engine Room	14
Flybridge	14
Engine Room	15
CONTACTS	16
Contact details	16
Telephones	16
Office hours	16
Address	16

SPECIFICATIONS

Basic Information

Category: Motor Yacht

Sub Category: Cockpit

Model Year: 1989

Year Built: 1989

Country: United States

Dimensions

LOA: 80' 0" (24.38m)

Beam: 18' 7" (5.66m)

Max Draft: 5' 3" (1.60m)

Speed, Capacities and Weight

Water Capacity: 365 Gallons

Fuel Capacity: 100 Gallons

Accommodations

Total Cabins: 3

Hull and Deck Information

Hull Material: Fiberglass

Engine Information

Engines: 2

Manufacturer: Detroit Diesel

Model: 1271

Engine Type: Inboard

Fuel Type: Diesel

DETAILED INFORMATION

Remarks

“Free Spirit” is a fine example of an 80’ Hatteras that has had an 8’ extension. She has been well maintained and has had numerous upgrades.

Her frameless windows give her the look of a much newer boat, and her recent addition of two new 32KW Kohler generators make her very reliable whether at sea or at anchor.

Her layout includes a full beam master stateroom and two additional guest staterooms, along with two separate crew staterooms forward.

Her large Salon and massive boat deck with bar make her perfect for entertaining. She is ready for east coast or Bahamas cruising and will not disappoint even the most experienced yachtsman.

If you are in the market for a well-appointed 80’ Hatteras, this one should be at the top of your list!

Cockpit

- Sink With Faucets
- Storage
- Freezer
- Two-Rod Holders In Gunwale
- Cockpit Speakers
- A/C Outlet
- Fresh Water Wash Down
- Swim Platform

Aft Deck

- Sharp 19’ Flat Screen T.V.
- A/C-Heat
- Wet Bar With Granite Counter Top

- SS Wine Chiller
- Kenmore Freezer
- Teak Decking
- Four Deck Chairs Plus Two End Tables
- E-Z To Sea Y Enclosure

Salon / Dining

- Formal Dinning Table For Six
- Wood Blinds
- High Low Gateway 42' T.V. With Direct T.V. KVH Set
- LG Blu-ray DVD
- Stereo AMP Receiver
- B&K Compact Speaker System
- Lutron Lighting Four Zone
- L-Shape Couch
- Carpet Runners For Salon

Galley

- Frigidaire SS Refrigerator
- Whirlpool SS Microwave
- GE Profile SS Cooktop & Oven
- Frigidaire SS Dishwasher
- Laminate Wood Flooring
- A/C Lighting All On Dimmer Switch
- Granite Countertops
- U-Shaped Dinette With Granite Table

Lower Helm

- Northstar 952x
- Northstar 6000 I
- Icom UHF IC-M602 Two separate units
- Furuno Radar 72 MI
- Garmin GPS 4212
- Garmin GMI 10 Depth/ Temp
- B&G H1000 Depth Finder
- B&G H1000 Wind Speed
- B&G Wind Direction Indicator
- Full VDO Gauge Instrumentation

- Robertson AP9 MKII Autopilot
- Side Power Bow Thruster
- ACR Search Light (Two Separate) Units
- Naiad Multi Sea II Stabilizer
- Extron Camera Remote Switch
- Sony CDX-M630 Stereo
- Windshield Washer/ Wiper
- Chart Light
- Hatteras System's Monitor
- A/C Electrical Panel
- Bench Seat
- Hydraulic Engine Controls
- Ritchie Compass
- Wi-Fi Booster system

Master Stateroom

- King Bed
- Walk-In Cedar Closet With Safe
- 19' Polaroid Flat Screen T.V. With Direct T.V.
- White Lacquered Drawers
- Granite Counters
- A/C Lighting With Dimmer Switches
- Ensuite Head & Shower, Tile Flooring, Hammered SS Sink
- Galley Made Head System
- Granite Counter In Head
- Dimmable Reading Lights
- SMX A/C Control
- Four Port Lights
- Two Speakers

Companionway

- Two Storage Closets

Port VIP Stateroom

- Full Size Bed
- 13' Sharp Flat Screen T.V.
- Sony Stereo System
- Desk With Granite Top

- Drawer Storage
- Cedar Closet
- Dimmable Reading Lights
- SMX A/C Control
- A/C Lighting On Dimmer Switches
- Ensuite Head & Shower With Granite Counter, Hammered SS Sink, Tile Flooring
- Galley Maid Lights
- Two Port Lights
- Two Speakers

Starboard Guest Stateroom

- Twin Beds
- 13' Sharpe Flat Screen T.V.
- SMX A/C Control
- A/C Dimmable Lighting
- Cedar Lined Closet
- Drawer Storage
- Two Port Lights
- En Suite Head & Shower, Granite Countertop, Hammered SS Sink, Tile Flooring.
- Jensen Stereo System
- Two Speakers

Crew Quarters

CREW AREA STBD STATEROOM:

- Twin Over Under Bunks
- Sharp 13' Flat Screen T.V.
- Two Speakers
- SMX A/C Control
- Cedar Lined Hanging Closet
- Drawer Storage
- En-Suite Head & Shower With Tile Flooring, Granite Countertop, Hammered SS Sink
- A/C Lighting

CREW AREA PORT STATEROOM:

- Single Berth
- 13' Sharp Flat Screen T.V.
- Drawer Storage
- Two Speakers
- SMX A/C Control
- Closet Storage

CREW MESS AREA:

- Refrigerator
- Samsung 13' T.V.
- Desk Area
- Storage Closet

Foredeck

- Galley Maid Windlass With Foot Switch
- MarQuipt 7 Step Tide Ride Ladder
- Two Deck Storage Boxes
- Foredeck Seating
- Four Step Boarding Ladder
- Hailer For Bow & Cockpit
- Sunscreen For Windshield
- Two 50 AMP Shore Power Cords
- Freshwater Wash Down
- 105 CQR Anchor With Approximately 270' Chain & 300' Rode

Flybridge

- Furuno NavNet GPS/Radar
- Garmin GPS 4214
- Robertson Auto Pilot A89 MKII
- Hynautic Engine Control
- Two ACR Spotlight Control
- Side Power Bow Thruster Control
- Full VDO Instrumentation Gauges
- Dual AM/FM CD Stereo
- Ritchie Compass
- New Bimini Top With Enclosure & With AFT Sunscreen

- Garmin GM 10 Depth/Temp
- B&G Wind Director
- B&G Wind & Depth
- Two Pompanette Chairs (Helm)
- Wet Bar
- Refrigerator
- Ice Maker SS Hoshizaki
- Six Bar Stools
- Systems Monitor Panel
- Indoor/Outdoor Carpeting, Entire Flybridge
- U-Shaped Seating With Table
- 13' Nautica With Yamaha Four-Stroke
- MarQuipt 1513 Davit
- Reverse Six Man Life Raft (In Canister)
- Two A/C Electric Outlets
- Aluminum Radar Arch

Engine Room

- Twin 1271 Detroit Diesels Approximately 4670 HRS
- Two New 32KW Kohler Gensets With Approximately 900 HRS
- Watermakers, INC: Water Maker
- Racor Filters For Main Engines & Gensets
- Naiad Stabilizers Multi Sea II
- 40-Gallon Hot Water Heater
- Pura Ultra Violet Water Purification System
- Cruise Air Chilled Water A/C System
- 24V Le Marche Consta Volt Battery Charger
- A/C Distribution Panel
- Battery Switches For Mains & Gensets
- Dewalt Air Compressor
- A/C & DC Lighting
- Nutone Central Vacuum
- CO2 Fire System
- Master Volt Battery Charger
- 24 Volt DC Electrical Panel
- 120V Blower Fan
- Oil Change System
- Tool Box

Lazarette

- Spare Props
- 2 x 300 Gallon Fuel Tanks
- Under Water Lights

Exclusions

All owner's personal items. A detailed list of exclusions to be provided at time of sale upon written request.

Exclusions

Owner's personal belongings.

Disclaimer

The Company offers the details of this vessel or yacht in good faith but cannot guarantee or warrant the accuracy of this information nor warrant the condition of the vessel. A buyer should instruct his representatives, agents, or his surveyors, to investigate such details as the buyer desires validated. This vessel or yacht is offered subject to prior sale, price change, or withdrawal without notice.

PHOTOS

Aft Deck



Aft Deck



Salon



Formal Dining



Formal Dining



Galley



Galley / Dinette



Galley



Pilothouse



Pilothouse



Pilothouse



Master Stateroom



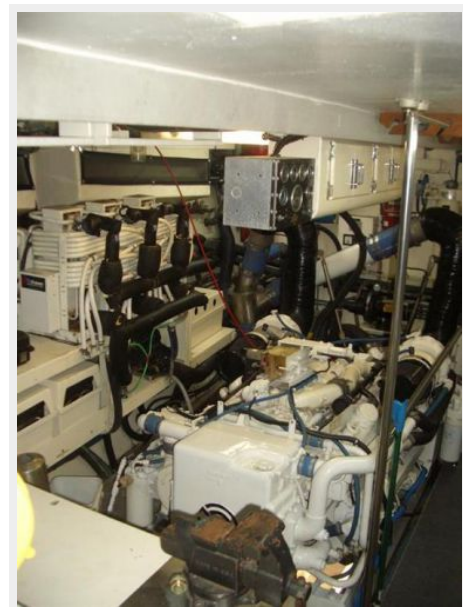
VIP Stateroom



Guest Stateroom



Engine Room



Flybridge



Engine Room



CONTACTS

Andrey Shestakov, leading yacht broker of the sales department of Shestakov Yacht Sales Inc. Shestakov Yacht Sales Inc., the official representative of the Miami/Fort Lauderdale FL headquarters.

Contact details

Email: andrey@shestakovyachtsales.com

Web: shestakovyachtsales.com/en/

Telephones

USA: +1(954)274-4435

Office hours

Monday – Saturday: **9:00 - 21:00** EDT

Sunday: **closed**

Address



Harbour Towne Marina, 850 NE 3rd St,
STE 213, Dania, FL 33004