

SEA LIFE — HARGRAVE



Builder: HARGRAVE

Year Built: 2003

Model: Motor Yacht

Price: PRICE ON APPLICATION

Location: United States

LOA: 68' 0" (20.73m)

Beam: 18' 6" (5.64m)

Min Draft: 5' 1" (1.55m)

Cruise Speed: 15 Kts. (17 MPH)

Max Speed: 18 Kts. (21 MPH)

Our experienced yacht broker, Andrey Shestakov, will help you choose and buy a yacht that best suits your needs **SEA LIFE — HARGRAVE** from our catalogue. Presently, at Shestakov Yacht Sales Inc., we have a wide variety of yachts available on our sale's list. We also work in close contact with all the big yacht manufacturers from all over the world.

If you would like to buy a yacht **SEA LIFE — HARGRAVE** or would like help answering any questions concerning purchasing, selling or chartering a yacht, please call **+1(954)274-4435**

TABLE OF CONTENTS

TABLE OF CONTENTS	2
SPECIFICATIONS	3
Overview	3
Basic Information	5
Dimensions	5
Speed, Capacities and Weight	5
Accommodations	6
Hull and Deck Information	6
Engine Information	6
DETAILED INFORMATION	7
Vessel Walk-through	7
Exclusions	9
Disclaimer	9
PHOTOS	10
CONTACTS	16
Contact details	16
Telephones	16
Office hours	16
Address	16

SPECIFICATIONS

Overview

Clear sight lines fore to aft are the hallmark of this yacht's interior. She has an impressive 3-stateroom layout, which accommodates up to six guests and crew cabin aft. Each owner and guest stateroom features a private en suite head. Twin CAT 3406 TA, 800hp engines, Naiad stabilizers. Upon entering SEA LIFE, one is struck by the clear sight lines fore to aft, a feature that is the hallmark of this yacht. The full-beam main salon is complete with satellite TV, a large screen plasma television, state-of-the-art entertainment electronics, and satin finish cherry cabinetry. Silk roman shades and soothing tones complement the stunning view outside. The open plan galley with warm teak and holly floors is fitted with granite countertops and Sub-Zero appliances, conveniently located under the countertops. Two barstools provide a convenient spot for a quick snack. Indoor dining for four is facilitated via a settee located in the pilothouse, just forward of the galley and to port of the navigation area. Or, if you prefer al fresco dining, the yacht's expansive flybridge deck and aft deck offer ample space for guests to enjoy their meals under the stars. Wide stairs curve down from the pilothouse to the yacht's accommodations deck. Access to all three staterooms is via a lower foyer. The full-beam, king-size master stateroom is located just forward of the engine room. It features a vanity and full-length closets on either side of the stateroom which provide ample stowage. The master bath is ensuite and is finished in cherry wood with coordinating granite flooring. In addition, all guest suites feature a full complement of entertainment electronics including flat screen televisions. The queen-size VIP stateroom is forward and features dramatic lighting, luxurious fabrics, Shoji screens and detailed joinery. Twin berths to port offer accommodation for children or single guests. Both cabins have full size closets and elegant ensuite baths also finished in cherry and granite. Stairs on either side of the swim platform lead to an ample transom that provides access to the crew's quarters and entry to water. Seating on the foredeck and the spacious flybridge deck provide plenty of additional outdoor lounging and sunning areas. Aft of the flybridge seating area you'll find the yacht's water toys and tender neatly stowed and lowered via a hydraulic davit.

Salon

With a full salon and forward galley it is amazing how spacious this yacht feels. To starboard, a Sony 32" flat screen TV is concealed within the cabinet, and situated next to a small media center with a Sony 5 disc /CD player and Sony Surround Sound Receiver. Across from here is a comfortable arrangement of furniture including a substantial sofa done in a soft rust color with various throw pillows, wood coffee and side tables, and a custom made chair and ottoman. Additional seating is found forward and to starboard where a small table and lamp sits between a pair of armchairs. Large windows are dressed with silky roman shades, and light-colored carpeting completes the space. The forward movement of this room eases you into the galley.

Galley A pair of bar stools found forward in the spacious salon are situated facing the granite-clad counters of the galley. Here, guests can watch as the chef prepares culinary delights. The teak and holly floor lends itself nicely to the cherry wood cabinetry and granite. The unique u-

shape of this galley gives you plenty of storage and ample counter space. A substantial stainless steel Franke sink faces picture windows and allows natural light to filter in. This space is nicely equipped with name brand appliances such as under counter stainless steel Sub-zero refrigerators, freezer and icemaker, a Dacor black cook top with GE microwave, two Dacor black warming ovens, a GE Profile black Dishwasher, and GE black garbage disposal. Overhead cabinets provide sweeping views both forward and aft.

Helm Just forward of the galley is the helm. To port is a small dinette suitable for about 3-4 guests to dine and relax while the captain navigates. A leather settee and high gloss finished teak table together create an inviting space. Facing the impressive electronics console is a large captain's chair. State-of-the-art equipment such as Furuno Radar and Raytheon Depth Display ensures safe travels. With full walk around decks and port and starboard doors from the helm, docking and line handling is a breeze. This yacht's design is ideal for a captain and crew, as well as an owner-operator. Starboard stairs lead down to the owner and guest staterooms.

Master Stateroom Down a few steps and forward of the aft bulkhead is the master stateroom. Thoughtfully placed where this yacht is widest, the master stateroom is quite roomy. Centrally located, the king berth with its custom Nautilus adjustable air mattress draws your attention with a large mirrored backdrop, fine wood joinery and custom column details. The berth is fitted with sumptuous bedding and a padded headboard. Accent pillows brighten the understated fabrics. Majilite upholstered walls soften the space. Storage is found to port with a large cedar lined closet, several drawers and display counters set beneath porthole windows. To starboard, a vanity adds a luxurious element to this nicely appointed stateroom. An additional closet is found to starboard. You will also enjoy such entertainment features as a 17" Samsung LCD display television, and a Sony 5-disc /CD player. An en suite head is forward and to starboard. Gorgeous granite floors and counters appeal to the senses, while your practical side will enjoy his and her sinks, a full shower and plenty of storage. You will appreciate such thoughtful touches as storage cabinets and a towel bar above the head. This master suite is an ideal place to escape and relax after the day's adventures.

VIP Stateroom All the way forward down the companionway is the stateroom. The unique angles of this bow stateroom offer an appealing arrangement, which puts the queen berth at center stage. This impressive queen bed with a custom memory foam mattress is detailed with elegant bedding, and a padded headboard. Your guests will enjoy the luxuriousness of this space. Hanging closets to port and starboard are ideal for weekend trips and extended stays. This stateroom also features an en suite head with fine granite counters and a full shower with a granite shower seat. Special custom touches such as lacquered shower walls in each head on this yacht add to the high level of sophistication, which you and your guests will truly appreciate.

Port Guest Stateroom No detail was left untouched on this splendid yacht, and each stateroom is as luxurious as the next. The port guest stateroom has a versatile arrangement with twin beds to accommodate 2 guests. Each bed with a custom memory foam mattress is fitted with elegant bedding and padded headboards creating a sense of continuity. Even the lampshades are done in a matching color. This stateroom features mirrors, a small nightstand and plenty of light both from lamps and natural light through the port windows. An en suite head is detailed with granite

throughout, including a custom granite shower seat in the full shower. Your guests will feel spoiled in these fine accommodations.

Flybridge Up a small ladder from the aft deck is the open flybridge with a custom fiberglass hardtop. This flybridge is ideal for entertainment featuring port and starboard seating areas, each with a small table for dining. Forward, the helm station is equipped with a helm chair, and port and starboard side companion benches. The fiberglass hardtop provides ample shade, and is open aft so you can soak in the sun. This large fly bridge has enough room for a 14' Rendova tender w/50hp Yamaha engine and a Quicklift 1600 hydraulic davit aft.

Crew Quarters The crew quarters are located aft of the engine room. Two crewmembers will be comfortable in a small suite with over/under bunks and a 13" Panasonic TV/VCR. Across the hall is a full head with a stall shower. This ideal arrangement gives you and your crew the privacy you need.

Basic Information

Category: Motor Yacht

Sub Category: Flybridge

Model Year: 2003

Year Built: 2003

Refit Year: 2015

Country: United States

Vessel Top: Hardtop

Fly Bridge: Yes

Dimensions

LOA: 68' 0" (20.73m)

LWL: 58' 2" (17.73m)

Beam: 18' 6" (5.64m)

Min Draft: 5' 1" (1.55m)

Clearance: 25' 0" (7.62m)

Speed, Capacities and Weight

Cruise Speed: 15 Kts. (17 MPH)

Max Speed: 18 Kts. (21 MPH)

Displacement: 158732.82864 Pounds

Water Capacity: 280 Gallons

Fuel Capacity: 1572 Gallons

Accommodations

Total Cabins: 3	Total Berths: 4
Sleeps: 6	Total Heads: 3
Crew Cabin: 1	Crew Berths: 2
Crew Sleeps: 2	Crew Heads: 1

Hull and Deck Information

Hull Material: Fiberglass	Deck Material: Fiberglass
Hull Configuration: Semi-Displacement	Hull Finish: Stainless Steel

Engine Information

Engines: 2	Manufacturer: Caterpillar
Model: 3406 TA	Engine Type: Inboard
Fuel Type: Diesel	

DETAILED INFORMATION

Vessel Walk-through

**** 2013 - NEW PAINT JOB/NEW TEAK DECK/ NEW INTERIOR** Upon entering SEA LIFE , one is struck by the clear sight lines fore to aft, a feature that is the hallmark of this yacht. The full-beam main salon is complete with satellite TV, a large screen plasma television, state-of-the-art entertainment electronics, and satin finish cherry cabinetry. Silk roman shades and soothing tones complement the stunning view outside. The open plan galley with warm faux teak and holly floors is fitted with granite countertops and Sub-Zero appliances, conveniently located under the countertops. Two barstools provide a convenient spot for a quick snack. Indoor dining for four is facilitated via a settee located in the pilothouse, just forward of the galley and to port of the navigation area. Or, if you prefer al fresco dining, the yacht's expansive flybridge deck and aft deck offer ample space for guests to enjoy their meals under the stars. Wide stairs curve down from the pilothouse to the yacht's accommodations deck. Access to all three staterooms is via a lower foyer. The full-beam, king-size master stateroom is located just forward of the engine room. It features a vanity and full-length closets on either side of the stateroom which provide ample stowage. The master bath is ensuite and is finished in cherry wood with coordinating granite flooring. In addition, all guest suites feature a full complement of entertainment electronics including flat screen televisions. The queen-size VIP stateroom is forward and features dramatic lighting, luxurious fabrics, Shoji screens and detailed joinery. Twin berths to port offer accommodation for children or single guests. Both cabins have full size closets and elegant ensuite baths also finished in cherry and granite. Stairs on either side of the swim platform lead to an ample transom that provides access to the crew's quarters and entry to water. Seating on the foredeck and the spacious flybridge deck provide plenty of additional outdoor lounging and sunning areas.

Salon

With a full salon and forward galley it is amazing how spacious this yacht feels. To starboard, a Sony 32" flat screen TV is concealed within the cabinet, and situated next to a small media center with a Sony 5 disc /CD player and Sony Surround Sound Receiver. Across from here is a comfortable arrangement of furniture including a substantial sofa done in a soft rust color with various throw pillows, wood coffee and side tables, and a custom made chair and ottoman. Additional seating is found forward and to starboard where a small table and lamp sits between a pair of armchairs. Large windows are dressed with silky roman shades, and light-colored carpeting completes the space. The forward movement of this room eases you into the galley.

Galley A pair of bar stools found forward in the spacious salon are situated facing the granite-clad counters of the galley. Here, guests can watch as the chef prepares culinary delights. The teak and holly floor lends itself nicely to the cherry wood cabinetry and granite. The unique u-shape of this galley gives you plenty of storage and ample counter space. A substantial stainless steel Franke sink faces picture windows and allows natural light to filter in. This space is nicely equipped with name brand appliances such as under counter stainless steel Sub-zero

refrigerators, freezer and icemaker, a Dacor black cook top with GE microwave, two Dacor black warming ovens, a GE Profile black Dishwasher, and GE black garbage disposal. Overhead cabinets provide sweeping views both forward and aft.

Helm Just forward of the galley is the helm. To port is a small dinette suitable for about 3-4 guests to dine and relax while the captain navigates. A leather settee and high gloss finished teak table together create an inviting space. Facing the impressive electronics console is a large captain's chair. State-of-the-art equipment such as Furuno Radar and Raytheon Depth Display ensures safe travels. With full walk around decks and port and starboard doors from the helm, docking and line handling is a breeze. This yacht's design is ideal for a captain and crew, as well as an owner-operator. Starboard stairs lead down to the owner and guest staterooms.

Master Stateroom Thoughtfully placed where this yacht is widest, the master stateroom is quite roomy. Accent pillows brighten the understated fabrics. Majilite upholstered walls soften the space. Storage is found to port with a large cedar lined closet, several drawers and display counters set beneath porthole windows. To starboard, a vanity adds a luxurious element to this nicely appointed stateroom. An additional closet is found to starboard. You will also enjoy such entertainment features as a 32" Samsung LCD display television, and a Sony 5-disc /CD player. An en suite head is forward and to starboard. Gorgeous granite floors and counters appeal to the senses, while your practical side will enjoy his and her sinks, a full shower and plenty of storage. You will appreciate such thoughtful touches as storage cabinets and a towel bar above the head. This master suite is an ideal place to escape and relax after the day's adventures.

VIP Stateroom All the way forward down the companionway is the stateroom. The unique angles of this bow stateroom offer an appealing arrangement, which puts the queen berth at center stage. This impressive queen bed with a custom memory foam mattress is detailed with elegant bedding, and a padded headboard. Your guests will enjoy the luxuriousness of this space. Hanging closets to port and starboard are ideal for weekend trips and extended stays. This stateroom also features an en suite head with fine granite counters and a full shower with a granite shower seat. Special custom touches such as lacquered shower walls in each head on this yacht add to the high level of sophistication, which you and your guests will truly appreciate.

Port Guest Stateroom No detail was left untouched on this splendid yacht, and each stateroom is as luxurious as the next. The port guest stateroom has a versatile arrangement with twin beds to accommodate 2 guests. Each bed with a custom memory foam mattress is fitted with elegant bedding and padded headboards creating a sense of continuity. Even the lampshades are done in a matching color. This stateroom features mirrors, a small nightstand and plenty of light both from lamps and natural light through the port windows. An en suite head is detailed with granite throughout, including a custom granite shower seat in the full shower. Your guests will feel spoiled in these fine accommodations.

Flybridge The open flybridge has a custom fiberglass hardtop. This flybridge is ideal for entertainment featuring port and starboard seating areas, each with a small table for dining. Forward, the helm station is equipped with a helm chair, and port and starboard side companion benches. The fiberglass hardtop provides ample shade, and is open aft so you can soak in the sun. This large fly bridge has enough room for a 14' Rendova tender w/50hp Yamaha engine

and a Quicklift 1600 hydraulic davit aft.

Crew Quarters The crew quarters are located aft of the engine room. Two crewmembers will be comfortable in a small suite with over/under bunks and a 13" Panasonic TV/VCR. Across the hall is a full head with a stall shower. This ideal arrangement gives you and your crew the privacy you need.

Exclusions

Owner's personal belongings.

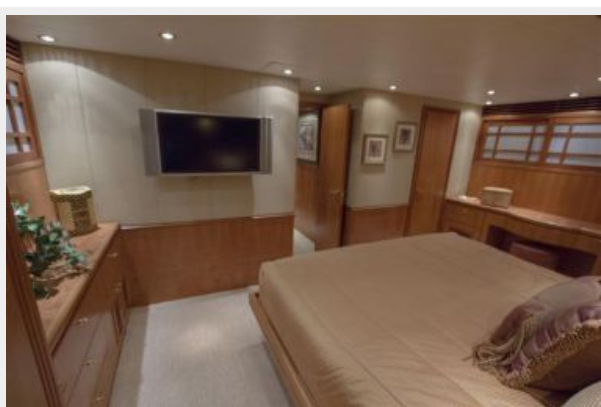
Disclaimer

The Company offers the details of this vessel or yacht in good faith but cannot guarantee or warrant the accuracy of this information nor warrant the condition of the vessel. A buyer should instruct his representatives, agents, or his surveyors, to investigate such details as the buyer desires validated. This vessel or yacht is offered subject to prior sale, price change, or withdrawal without notice.

PHOTOS

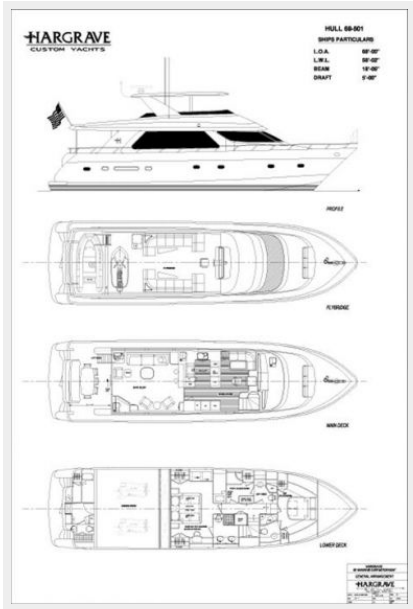












CONTACTS

Andrey Shestakov, leading yacht broker of the sales department of Shestakov Yacht Sales Inc. Shestakov Yacht Sales Inc., the official representative of the Miami/Fort Lauderdale FL headquarters.

Contact details

Email:
andrey@shestakovyachtsales.com

Web: shestakovyachtsales.com/en/

Telephones

USA: **+1(954)274-4435**

Office hours

Monday – Saturday: **9:00 - 21:00 EDT**

Sunday: **closed**

Address



Harbour Towne Marina, 850 NE 3rd St,
STE 213, Dania, FL 33004