

TWO ORR'S — CRUISERS YACHTS



Builder: [Cruisers Yachts](#)

Year Built: 2012

Model: Cruiser

Price: PRICE ON APPLICATION

Location: United States

LOA: 48' 0" (14.63m)

Beam: 14' 6" (4.42m)

Max Draft: 3' 6" (1.07m)

Cruise Speed: 26 Kts. (30 MPH)

Max Speed: 31 Kts. (36 MPH)

Our experienced yacht broker, Andrey Shestakov, will help you choose and buy a yacht that best suits your needs **Two Orr's — Cruisers Yachts** from our catalogue. Presently, at Shestakov Yacht Sales Inc., we have a wide variety of yachts available on our sale's list. We also work in close contact with all the big yacht manufacturers from all over the world.

If you would like to buy a yacht **Two Orr's — Cruisers Yachts** or would like help answering any questions concerning purchasing, selling or chartering a yacht, please call **+1(954)274-4435**

TABLE OF CONTENTS

TABLE OF CONTENTS	2
SPECIFICATIONS	5
Overview	5
Basic Information	5
Dimensions	5
Speed, Capacities and Weight	5
Accommodations	6
Hull and Deck Information	6
Engine Information	6
DETAILED INFORMATION	7
Overview	7
Salon-Upper Portside	7
Salon-Upper Starboard	7
Dinette-Lower	8
Galley	8
Master Stateroom	8
Master Head	9
VIP Stateroom	9
Guest Head	9
Helm	9
Electronics	10
Electrical System	10
Mechanical Equipment	10
Engine Room	11
Aft Deck	11
Cockpit	11
Decks-Bow	11
Exclusions	12

Disclaimer	12
PHOTOS	13
Salon-Upper Portside	13
Salon-Upper Portside	13
Salon-Upper Starboard Side	13
Salon- Upper Starboard Side	13
Salon-Upper	13
Salon Sunroof	13
Dinette	14
Salon Sunroof	14
Dinette	14
Galley	14
Galley	14
Master Stateroom	14
Master Stateroom	15
Master Stateroom-Washer/Dryer Combo	15
Master Head	15
Master Stateroom- Vanity	15
Master Stall	15
VIP Stateroom	15
VIP Stateroom	16
Guest Head	16
Guest Shower	16
Helm	16
Helm	16
Electronics	16
Electronics	17
Electronics	17
Electrical System	17

Electrical system	17
Mechanical System	17
Mechanical System	17
Engine Room	18
Engine Room	18
Engine Room	18
Cockpit Grill	18
Cockpit Seating	18
Cockpit	18
Seim Platform	19
Transom	19
Bow Sunpad	19
Bow Sunpad	19
Profile	19
Profile	19
Profile	20
Profile	20
CONTACTS	21
Contact details	21
Telephones	21
Office hours	21
Address	21

SPECIFICATIONS

Overview

"Two Orr's" is a 2012 Cruisers Yachts 48 Cantius with all the best equipment as she was outfitted by her extremely knowledgeable owners. They have provided her with meticulous care since taking delivery in February 2013!

In addition to the list of equipment "Two Orr's" is covered by **Passport Premier Extended Service Contract through February 2019 and is TRANSFERRABLE!!**

Basic Information

Category: Cruiser

Sub Category: Express

Model Year: 2012

Year Built: 2012

Country: United States

Vessel Top: Electronic Sunroof

Cockpit: Yes

Dimensions

LOA: 48' 0" (14.63m)

Beam: 14' 6" (4.42m)

Max Draft: 3' 6" (1.07m)

Clearance: 15' 6" (4.72m)

Speed, Capacities and Weight

Cruise Speed: 26 Kts. (30 MPH)

Max Speed: 31 Kts. (36 MPH)

Displacement: 32700 Pounds

Water Capacity: 80 Gallons

Holding Tank: 50 Gallons

Fuel Capacity: 350 Gallons

Accommodations

Total Cabins: 2

Sleeps: 6

Total Heads: 2

Hull and Deck Information

Hull Material: Fiberglass

Engine Information

Engines: 2

Manufacturer: Volvo

Model: IPS 600

Engine Type: Inboard

Fuel Type: Diesel

DETAILED INFORMATION

Overview

This ground breaking new model from Cruisers Yachts features an upper and lower salon with sliding patio doors enclosing the upper salon and helm station. The cockpit and upper salon are on the same level and the patio doors allow a free flow of traffic when entertaining. Below decks is an open and airy lower salon with L-shaped sofa, flat screen TV and galley. The master stateroom is mid-ship and is full beam with a private head and separate shower stall. The VIP stateroom is forward with center-line berth and split head design with a shower to port and head/vanity to starboard, plus the Dinette has a sleeper sofa so you can sleep 6 comfortably. This vessel features Wenge wood cabinetry and Amtico hardwood floors. You must see this award winning vessel to appreciate the innovative design powered by Twin Volvo IPS-600 with Joystick docking and precision handling.

The "Two Orr's" completed the "Great Loop" in August 2014 and is the perfect Loop boat.

She is in Excellent Condition. Please call today to schedule your showing.

Salon-Upper Portside

Enter the upper salon through the tri-slide glass door and experience 360 degrees of visibility found on one level.

- Two 16,000 BTU AC/Heat
- L-shaped lounge with expanding table
- Excellent visibility while under way
- Walk-thru windshield
- Hardtop with sliding sunroof and shade
- Sony AM/FM/CD/SAT with 10 speakers
- Tinted windows film with Huber Optic 70-all windows, doors and sunroof
- All windows have blinds or covers

Salon-Upper Starboard

- Stark rug runners
- Pop-up 32" Samsung HD LED TV
- Direct TV HD receiver
- Blu-ray DVD player
- Sink above and storage below
- Ocean-Air Blinds
- Opening windows and sliding sunroof

- Syrens WIFI on board system

Dinette-Lower

- Abundant natural light
- L-shaped sofa/sleeper by Flexsteel - sleeps two
- Storage cabinets overhead
- Entrance to VIP/Day Head
- Large removable dining table
- Access to AC/DC shore power panel
- Halogen and LED lighting
- Amtico flooring- Wenge
- Central vacuum system

Galley

- Solid surface countertop
- Double stainless steel sink
- All electric galley
- Two burner electric stove
- Full size dual voltage refrigerator/freezer
- Microwave/convection/baking oven
- 32" Samsung LED TV
- Direct TV HD receiver
- Abundant upper and lower cabinets/drawers
- Halogen and LED lighting
- Incredible natural light

Master Stateroom

- Island Queen Berth with Custom Made Tempur-Pedic Mattress and Storage Below
- Duvet cover and pillow shams
- Fitted and flat sheet set
- 32" Samsung LED HD TV
- Direct TV HD receiver
- Blu-ray DVD player
- Large mirror and 2 drawer
- Large windows with blinds
- 3 drawer starboard of bed
- Cedar lined hanging locker
- LED and Halogen lights

- Combo washer/dryer
- Vanity sink with lots of storage cabinets
- Excellent head room

Master Head

- Separate shower stall
- Exhaust fan ventilation
- Donnetic Electric toilet
- 11 Gallon water heater
- Storage locker
- Additional hanging bars
- Towel package

VIP Stateroom

- Center Line Island Berth with Custom Made Tempur-Pedic Mattress and storage below with 3 drawers
- Duvet cover and pillow shams
- Fitted and flat sheets
- Sony 22" LCD HD TV/DVD
- Two hanging lockers
- Over head storage cabinets
- Abundance of natural light

Guest Head

- Split head design with toilet and vanity to starboard
- Separate large shower stall to port
- Exhaust fan ventilation
- Donnetic electric toilet
- Abundant storage
- Sink and vanity
- Towel package

Helm

- Double wide helm seat with flip-up bolster
- Electronic engine controls
- Joystick docking system

- 7" LED Volvo display
- Digital depth finder
- Windlass and spot light remote control
- Windshield washer and wiper
- Windshield cover -(2) 100% + 90%

Electronics

- Raymarine Premium Electronics Package
- 2-E120 with 12" Color Display Net Worked Touch Screen
- 4kw HD Color Radar
- DSM 300 Sounder/Fishfinder
- Smart Pilot ST8001 Autopilot
- Standard Horizon VHF with 8' Antenna and Hailer Horn
- Icom M504 VHF Radio with 8' Antenna
- Tracvision HD7 SAT HD TV system with 3 Direct TV Receivers
- AIS Transceiver with Overlay AIS Targets
- EPIRB
- Sirius Satellite Weather
- Tri-Color Under Water Lights with Remote Control

Electrical System

- **Passport ESC until February 2019**
- 13.5kW Kohler generator with 512 hours
- Charles ISO Boost 50 Voltage Stabilizer
- Glendinning Cable Master 75' Cord 240V/50Amp with remote control
- Battery charging system and monitor
- Battery parallel switch
- Galvanic isolator
- 11 Gallon water heater
- GFI outlets
- ABYSS underwater lights multi color

Mechanical Equipment

- Hydraulic pump/transom lift
- Algae-X fuel conditioner
- Oil changer system for engines and generator
- 4-16,000 BTU AC/Heat - total 64,000 BTU's
- 3-Bilge pumps

- 3- Carbon monoxide detectors
- Electro-hydraulic trim tabs
- Smoke detectors - Networked

Engine Room

- Volvo IPS 600 with 535 hours
- **Passport ESC until February 2019**
- Stand-up engine room
- Fuel cross-over system
- Fire extinguisher -automatic
- Volvo IPS prop line cutter
- Spare props - 1 set

Aft Deck

- Electric grill
- Ice maker
- Refrigerator
- U-shaped seating - converts to sun lounge with table
- Self bailing
- Engine room access
- Storage under seating
- Drink holders
- Rod holders

Cockpit

- Swim platform - extended hydraulic lift with dinghy cradle
- Large trunk storage
- Teak flag pole and holder
- Dual transom doors
- Hot and cold shower
- LED courtesy lights
- Weather covers for seats and table
- Trash can

Decks-Bow

- Anchor polished stainless steel

- Chaise lounge- foredeck cushions with covers
- Walk-through windshield
- Wide 14" side decks
- Bow storage locker
- Welded stainless steel bow rails

Exclusions

Owner's personal belongings.

Disclaimer

The Company offers the details of this vessel or yacht in good faith but cannot guarantee or warrant the accuracy of this information nor warrant the condition of the vessel. A buyer should instruct his representatives, agents, or his surveyors, to investigate such details as the buyer desires validated. This vessel or yacht is offered subject to prior sale, price change, or withdrawal without notice.

PHOTOS

Salon-Upper Portside



Salon-Upper Portside



Salon-Upper Starboard Side



Salon- Upper Starboard Side



Salon-Upper



Salon Sunroof



Salon Sunroof



Dinette



Dinette



Galley



Galley



Master Stateroom



Master Stateroom



Master Stateroom-Washer/Dryer Combo



Master Head



Master Stateroom- Vanity



Master Stall



VIP Stateroom



VIP Stateroom



Guest Head



Guest Shower



Helm



Helm



Electronics



Electronics



Electronics



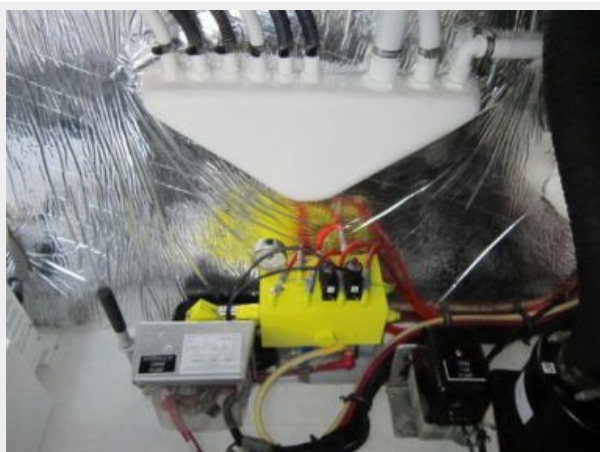
Electrical System



Electrical system



Mechanical System



Mechanical System



Engine Room



Engine Room



Engine Room



Cockpit Grill



Cockpit Seating



Cockpit



Seim Platform



Transom



Bow Sunpad



Bow Sunpad



Profile



Profile



Profile



Profile



CONTACTS

Andrey Shestakov, leading yacht broker of the sales department of Shestakov Yacht Sales Inc. Shestakov Yacht Sales Inc., the official representative of the Miami/Fort Lauderdale FL headquarters.

Contact details

Email: andrey@shestakovyachtsales.com

Web: shestakovyachtsales.com/en/

Telephones

USA: +1(954)274-4435

Office hours

Monday – Saturday: **9:00 - 21:00** EDT

Sunday: **closed**

Address



Harbour Towne Marina, 850 NE 3rd St,
STE 213, Dania, FL 33004