

TORTOLA — BRUCE ROBERTS



Судостроитель: BRUCE ROBERTS

Год постройки: 1997

Модель: Траулер

Цена: ЦЕНА ЯХТЫ ПО ЗАПРОСУ

Местонахождение: United States

Длина общая: 46' 0" (14.02m)

Ширина: 15' 6" (4.72m)

Мин. осадка: 5' 0" (1.52m)

Макс. осадка: 5' 0" (1.52m)

Крейс. скорость: 7 Kts. (8 MPH)

Макс. скорость: 9 Kts. (10 MPH)

Купить Tortola — BRUCE ROBERTS а также выбрать подходящую вам яхту из нашего каталога яхт вам поможет опытный яхтенный брокер Андрей Шестаков. На сегодняшний день компания Shestakov Yacht Sales Inc. имеет большое количество яхт в собственном списке продаж, а также тесно сотрудничает со всеми крупными яхтенными производителями по всему миру.

Для того чтобы купить яхту Tortola — BRUCE ROBERTS а также проконсультироваться по любому вопросу связанному с покупкой, продажей, чартером яхт позвоните по телефону **+7(918)465-66-44**.

ОГЛАВЛЕНИЕ

ОГЛАВЛЕНИЕ	2
ХАРАКТЕРИСТИКИ	6
Обзор	6
Основная информация	6
Размеры	6
Скорость, вместимость и масса	6
Размещение	7
Корпус и палуба	7
Информация о двигателе	7
ПОДРОБНОЕ ОПИСАНИЕ	8
46' Roberts Overview	8
46' Roberts Vessel Walkthrough	8
46' Roberts Accommodations	8
46' Roberts Salon	8
46' Roberts Galley	8
46' Roberts Dining	9
46' Roberts Master Stateroom	9
46' Roberts Guest Stateroom	9
46' Roberts Lower Helm	9
46' Roberts Flybridge	9
46' Roberts Aftdeck	10
46' Roberts Audio/Visual Equipment	10
46' Roberts Electronics	10
46' Roberts Electrical System	10
46' Roberts Engine/Mechanical Equipment	11
46' Roberts Deck Equipment	11
46' Roberts Tender	12
46' Roberts Safety & Fire Protection	12

46' Roberts Exclusions	12
46' Roberts Disclaimer	13
Исключения	13
Отказ от ответственности	13
ФОТОГРАФИИ	14
46' Roberts starboard forward profile	14
46' Roberts starboard profile	14
46' Roberts anchor windlass	14
46' Roberts starboard aft profile	14
46' Roberts foredeck	15
46' Roberts foredeck aft	15
46' Roberts port side deck photo1	15
46' Roberts port side deck photo2	15
46' Roberts starboard side deck photo1	16
46' Roberts starboard side deck photo2	16
46' Roberts flybridge forward photo1	16
46' Roberts flybridge forward photo2	16
46' Roberts flybridge port	16
46' Roberts flybridge starboard	16
46' Roberts flybridge helm	17
46' Roberts flybridge helmseats	17
46' Roberts flybridge seating photo1	17
46' Roberts flybridge seating photo2	17
46' Roberts aftdeck	17
46' Roberts aftdeck port	17
46' Roberts aftdeck starboard	18
46' Roberts aftdeck forward	18
46' Roberts aftdeck BBQ grill	18
46' Roberts lazarette	18

46' Roberts swimplatform	18
46' Roberts tender	18
46' Roberts tender outboard	19
46' Roberts salon forward	19
46' Roberts salon aft	19
46' Roberts salon port	19
46' Roberts salon port aft	20
46' Roberts salon settee photo1	20
46' Roberts salon settee photo2	20
46' Roberts galley photo1	20
46' Roberts galley photo2	21
46' Roberts lower helm	21
46' Roberts master stateroom	21
46' Roberts master stateroom port	21
46' Roberts master stateroom head	22
46' Roberts master stateroom starboard	22
46' Roberts guest stateroom photo1	22
46' Roberts guest stateroom photo2	22
46' Roberts guest head	23
46' Roberts guest shower-tub	23
46' Roberts engine room	23
46' Roberts engine room forward	23
46' Roberts engine room aft	24
46' Roberts main engine	24
46' Roberts generator sound box	24
46' Roberts generator	24
46' Roberts battery charger	24
46' Roberts hauled out photo1	24
46' Roberts hauled out photo2	25

46' Roberts hauled out photo3	25
46' Roberts hauled out photo4	25
КОНТАКТЫ	26
Контактная информация	26
Телефоны	26
Время работы	26
Адрес	26

ХАРАКТЕРИСТИКИ

Обзор

46' Bruce Roberts Custom Cold-Molded Long Range Trawler

Tortola is a 1998 46' Bruce Roberts designed, single screw trawler. She offers a 2 stateroom, 2 head layout, fuel efficient single Perkins 135 hp main engine, bow thruster, covered side decks and upper and lower helms. Tortola is a Great Loop and Down East Loop veteran. The sellers have completed their cruising plans, so Tortola is seriously for sale.

Sellers' comments:

"Tortola's hull utilizes the West System epoxy cold molded process, involving 3 layers of 1/4" marine mahogany plywood saturated in epoxy. This process produces a hull material that prevents water intrusion, is not subject to blistering and is both stronger and lighter than fibreglass. The entire hull is then covered in 3 layers of glass mat prior to the Awlgrip finish".

Основная информация

Тип судна: Траулер	Подкатегория: Европа
Модельный год: 1998	Год постройки: 1997
Страна: United States	Открытая палуба мостика: Да

Размеры

Длина общая: 46' 0" (14.02m)	Ширина: 15' 6" (4.72m)
Мин. осадка: 5' 0" (1.52m)	Макс. осадка: 5' 0" (1.52m)

Скорость, вместимость и масса

Крейс. скорость: 7 Kts. (8 MPH)	Макс. скорость: 9 Kts. (10 MPH)
Водоизмещение: 38000 Pounds	Вместимость воды: 400 Gallons
Вместимость сточного бака: 250 Gallons Объем топливного бака: 600 Gallons	

Размещение

Всего кают: 2

Всего коек: 3

Спальные места: 4

Всего ком. состава: 2

Корпус и палуба

Материал корпуса: Wood Epoxy

Материал палубы: Fiberglass over Wood

Цвет корпуса: White

Отделка корпуса: Fiberglass

Информация о двигателе

Двигатели: 1

Производитель: Perkins

Модель: Range 4

Тип двигателя: Inboard

Тип топлива: Diesel

ПОДРОБНОЕ ОПИСАНИЕ

46' Roberts Overview

46' Bruce Roberts Custom Cold-Molded Long Range Trawler

Tortola is a 1998 46' Bruce Roberts designed, single screw trawler. She offers a 2 stateroom, 2 head layout, fuel efficient single Perkins 135 hp main engine, bow thruster, covered side decks and upper and lower helms. Tortola is a Great Loop and Down East Loop veteran. The sellers have completed their cruising plans, so Tortola is seriously for sale.

Sellers' comments:

"Tortola's hull utilizes the West System epoxy cold molded process, involving 3 layers of 1/4" marine mahogany plywood saturated in epoxy. This process produces a hull material that prevents water intrusion, is not subject to blistering and is both stronger and lighter than fibreglass. The entire hull is then covered in 3 layers of glass mat prior to the Awlgrip finish".

46' Roberts Vessel Walkthrough

Entering the salon from the covered aftdeck, you will find storage cabinetry port aft, lounge chairs and folding table to port, lower helm and side deck access door port forward, galley starboard aft and settee with table starboard forward. Stepping forward and down, you will find the guest head to port, guest stateroom to starboard and the master stateroom and ensuite head forward. Engine room access is via salon sole hatches. There is LED lighting throughout the vessel (Installed in 2010).

46' Roberts Accommodations

Tortola offers a master stateroom forward with island queen size berth and ensuite head and a guest stateroom to starboard with offset single berths. The guest head with tub/shower is to port.

46' Roberts Salon

The salon offers a large, wrap-around settee with table starboard forward, lounge chairs and folding table to port, storage cabinetry port aft, Cherrywood sole, fans, opening side windows, shades and Phantom roll away screen doors aft and to port.

46' Roberts Galley

The galley is located starboard aft in the salon.

- Princess 3-burner electric cooktop and oven
- LG convection/microwave oven
- Norcold refrigerator/freezer (2010)
- Large stainless steel sink
- Storage drawers and cabinets
- Dickinson BBQ grill on the aftdeck
- Coolmatic refrigerator/freezer on the flybridge

46' Roberts Dining

Dining space is available at the salon settee/table, the aftdeck table and the flybridge table.

46' Roberts Master Stateroom

The master stateroom is forward and offers an island queen size berth, reading lights, nightstands, shelves, storage cabinets, hanging lockers, storage under the berth, Bomar overhead hatch (2013), Oceanair shades, 2 portlights, carpet and an ensuite head.

46' Roberts Guest Stateroom

The guest stateroom is located to starboard and offers offset single berths, hanging locker, storage drawers and cabinets, shelf, storage under the lower berth, 2 windows, overhead hatch, reading lights, nightstand and carpet. The guest head is to port and include a tub/shower.

46' Roberts Lower Helm

The lower helm is port forward in the salon and offers a full console and side deck access door.

46' Roberts Flybridge

The flybridge offers a hardtop, Eisenglass enclosure, wrap-around seating and folding, hi/lo teak table port aft, 2 Stidd helmseats, removable chart table, folding teak table starboard aft, non-skid deck and full console forward with storage underneath. There is a stainless steel and teak ladder from the aftdeck and the tender is stored aft.

46' Roberts Aftdeck

The covered aftdeck offers lazarette access, Tech Deck faux teak decking, starboard bulwark steps, transom door to the fiberglass swimplatform, transom storage, deck chairs and table, Dickinson BBQ grill and same level access to each side deck.

46' Roberts Audio/Visual Equipment

- KVH satellite TV system
- Sony flat screen TV in the salon

46' Roberts Electronics

- Raymarine Radar
- AIS receiver
- Icom IC-M504 VHF on the flybridge
- Icom Commandmic VHF at the lower helm
- Icom IC-M710 SSB at the lower helm
- Raymarine ST60 wind, speed, depth displays on the flybridge
- Raymarine ST60 Graphic at the lower helm
- Raymarine ST8001 SmartPilot autopilot on the flybridge
- Raymarine ST8002 Smart Pilot autopilot at the lower helm
- Raymarine E120 Multi-Function Display on the flybridge
- Raymarine E80 Multi-Function Display at the lower helm
- Apelco 365 fish finder on the flybridge
- Aqua Meter Saturn magnetic compass at the lower helm
- Urania magnetic compass on the flybridge
- Schatz ship's clock at the lower helm

46' Roberts Electrical System

- Onan MDKAW-5679647 11.5 kW generator with 902 hours (2006)
- Xantrex 2500 watt inverter/charger (2014)
- Xantrex Xanbus System Control Panel at the lower helm
- ProMariner Prosport 20 back up battery charger
- Rolls house batteries (1100 amp hours total)
- Odyssey AGM main and generator start batteries and bowthruster battery
- Guest battery switches
- 30 amp shore cord
- 2 X 12vdc outlets on the flybridge

46' Roberts Engine/Mechanical Equipment

- Single Perkins 6.3533M Range 4 135 hp main engine with 3,890 hours
- Twin Disc MG5011sc gearbox
- Morse engine control
- VDO gauges
- Perko sea strainers
- Dual Racor 75500MAX fuel filters with vacuum gauges
- Seastar hydraulic steering system
- Marine Hardware bowthruster
- Ocean Breeze reverse cycle air conditioning/heating system
- Wema tank gauges
- Kodomar Tech water purifier system

46' Roberts Deck Equipment

- Lewmar anchor windlass
- CQR 60lb anchor

- Northstar 23 kg anchor
- Fortress FX-37 anchor
- Dual stainless steel anchor rollers
- 3 X Bomar foredeck hatches (2010)
- Non-skid deck forward and Tech Deck faux teak decks on each side and aft
- Covered side decks
- Stainless steel rails
- Stainless steel deck hardware
- Dock water connection
- Stainless steel swim ladder
- Fiberglass swimplatform
- Vessel is painted with Awlgrip

46' Roberts Tender

- AB 10'5" RIB
- Mercury 9.9 hp 4-stroke outboard
- Mast and boom davit system

46' Roberts Safety & Fire Protection

- Xintex S-1 propane fume detector
- Fire extinguishers
- Life jackets

46' Roberts Exclusions

- Sellers' personal belongings
- Artwork

- Salon rug

46' Roberts Disclaimer

The Company offers the details of this vessel in good faith but cannot guarantee or warrant the accuracy of this information nor warrant the condition of the vessel. A buyer should instruct his agents, or his surveyors, to investigate such details as the buyer desires validated. This vessel is offered subject to prior sale, price change, or withdrawal without notice.

Исключения

При продаже яхты исключаются личные вещи владельца.

Отказ от ответственности

Компания предоставляет описание судна или яхты добросовестно, но не может гарантировать точность этой информации, а также не ручается за техническое состояние. Покупатель должен проинструктировать своих агентов или оценщиков исследовать представленную информацию более подробно, по собственному желанию. Продажа судна или яхты, изменение цены или снятие с продажи будет происходить без предварительного уведомления.

ФОТОГРАФИИ

46' Roberts starboard profile



46' Roberts starboard forward profile



46' Roberts starboard aft profile



46' Roberts anchor windlass



46' Roberts foredeck



46' Roberts foredeck aft



46' Roberts port side deck photo1



46' Roberts port side deck photo2



46' Roberts starboard side deck photo1



46' Roberts starboard side deck photo2



46' Roberts flybridge forward photo1



46' Roberts flybridge forward photo2



46' Roberts flybridge port



46' Roberts flybridge starboard



46' Roberts flybridge helm



46' Roberts flybridge helmseats



46' Roberts flybridge seating photo1



46' Roberts flybridge seating photo2



46' Roberts aftdeck



46' Roberts aftdeck port



46' Roberts aftdeck starboard



46' Roberts aftdeck forward



46' Roberts aftdeck BBQ grill



46' Roberts lazarette



46' Roberts swimplatform



46' Roberts tender



46' Roberts tender outboard



46' Roberts salon forward



46' Roberts salon aft



46' Roberts salon port



46' Roberts salon port aft



46' Roberts salon settee photo1



46' Roberts salon settee photo2



46' Roberts galley photo1



46' Roberts galley photo2



46' Roberts lower helm



46' Roberts master stateroom



46' Roberts master stateroom port



46' Roberts master stateroom head

46' Roberts master stateroom starboard



46' Roberts guest stateroom photo1



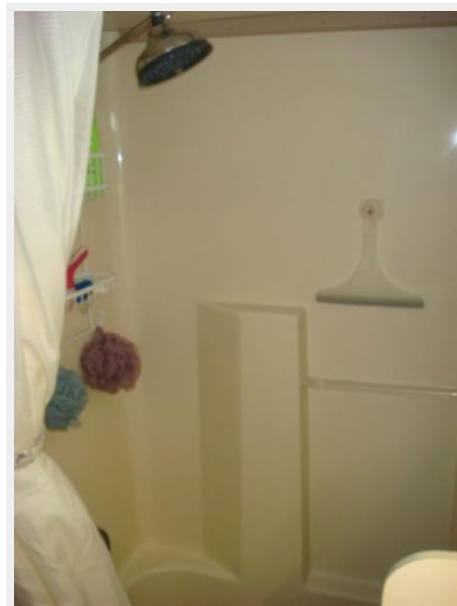
46' Roberts guest stateroom photo2



46' Roberts guest head



46' Roberts guest shower-tub



46' Roberts engine room



46' Roberts engine room forward



46' Roberts engine room aft



46' Roberts main engine



46' Roberts generator sound box



46' Roberts generator



46' Roberts battery charger



46' Roberts hauled out photo1



46' Roberts hauled out photo2



46' Roberts hauled out photo3



46' Roberts hauled out photo4



КОНТАКТЫ

Андрей Шестаков (Andrey Shestakov) – ведущий яхтенный брокер отдела продаж яхт и судов компании Shestakov Yacht Sales Inc. Официальный представитель Shestakov Yacht Sales Inc. для русскоговорящих клиентов в центральном офисе компании в Майами/Форт Лодердейл/Флорида/США.

Контактная информация

Email: andrey@shestakovyachtsales.com

Web: shestakovyachtsales.com

Телефоны

Краснодарский край: **+7(918)465-66-44**

США, Майами, Флорида: **+1(954)274-4435**

Время работы

Понедельник – Суббота: **9:00 - 21:00**
EDT

Воскресенье: **Закрито**

Адрес



Harbour Towne Marina, 850 NE 3rd St,
STE 213, Dania, FL 33004