

LADY PEGASUS — CHEOY LEE



Судостроитель: CHEOY LEE

Год постройки: 2002

Модель: Моторная яхта

Цена: **ЦЕНА ЯХТЫ ПО ЗАПРОСУ**

Местонахождение: United States

Длина общая: 74' 0" (22.56m)

Ширина: 20' 2" (6.15m)

Макс. осадка: 5' 6" (1.68m)

Крейс. скорость: 22 Kts. (25 MPH)

Макс. скорость: 26 Kts. (30 MPH)

Купить **LADY PEGASUS — CHEOY LEE** а также выбрать подходящую вам яхту из нашего каталога яхт вам поможет опытный яхтенный брокер Андрей Шестаков. На сегодняшний день компания **Shestakov Yacht Sales Inc.** имеет большое количество яхт в собственном списке продаж, а также тесно сотрудничает со всеми крупными яхтенными производителями по всему миру.

Для того чтобы купить яхту **LADY PEGASUS — CHEOY LEE** а также проконсультироваться по любому вопросу связанному с покупкой, продажей, чартером яхт позвоните по телефону **+7(918)465-66-44**.

ОГЛАВЛЕНИЕ

ОГЛАВЛЕНИЕ	2
ХАРАКТЕРИСТИКИ	5
Основная информация	5
Размеры	5
Скорость, вместимость и масса	5
Размещение	5
Корпус и палуба	5
Информация о двигателе	6
ПОДРОБНОЕ ОПИСАНИЕ	7
Salon	7
Entertainment Equipment	7
Dining	8
Galley	8
Galley Equipment	8
Dinette	9
Pilothouse	9
Accommodations	9
Master Stateroom	10
Master Head	10
Guest Stateroom 1	10
Guest Stateroom 2	11
Guest Stateroom 3/Captain Island Queen	11
Office/Crew	11
Laundry	12
Aft Deck	12
Fly Bridge	12
Deck House and Main Deck	13
Hull and Deck	13

Swim Platform, integral to the hull	13
Electronics and Navigation	14
Mechanical and Engine Room	14
Electrical System	15
Recent Upgrades	16
Remarks	16
Исключения	17
Отказ от ответственности	17
ФОТОГРАФИИ	18
Aft Deck seating	18
Aft Deck	18
Salon view aft	18
Salon fwd	18
Salon port side	19
Dining	19
Galley	19
Dinette	19
Staircase to flybridge	20
Pilothouse	20
Dayhead	20
Master	20
Master Head	21
Master	21
Master Shower	21
Guest Stateroom 1	21
Twin Guest Stateroom 2	22
Guest 3/Captain Island Queen	22
Crew/Office	22
Flybridge	22

Flybridge	23
Flybridge Helm	23
Sidedecks	23
Hinged Radar Mast	23
Engine Room	23
Engine Room	23
Stern	24
Engine Room	24
Under shed	24
КОНТАКТЫ	25
Контактная информация	25
Телефоны	25
Время работы	25
Адрес	25

ХАРАКТЕРИСТИКИ

Основная информация

Тип судна: Моторная яхта

Модельный год: 2002

Год постройки: 2002

Страна: United States

Верх: Hardtop

Открытая палуба мостика: Да

Размеры

Длина общая: 74' 0" (22.56m)

Ширина: 20' 2" (6.15m)

Макс. осадка: 5' 6" (1.68m)

Длина привального бруса: 74' 0"
(22.56m)

Скорость, вместимость и масса

Крейс. скорость: 22 Kts. (25 MPH)

Макс. скорость: 26 Kts. (30 MPH)

Водоизмещение: 120000 Pounds

Вместимость воды: 550 Gallons

Объем топливного бака: 1750 Gallons

Размещение

Всего кают: 4

Спальные места: 8

Всего ком. состава: 5

Каюта капитана: Да

Каюты экипажа: 1

Койки экипажа: 1

Корпус и палуба

Материал корпуса: Fiberglass

Комплектация корпуса: Semi Vee

Информация о двигателе

Двигатели: 2

Производитель: Caterpillar

Модель: 3412 TA's

ПОДРОБНОЕ ОПИСАНИЕ

Salon

Beautifully appointed, open and airy, with excellent vistas through large windows port and starboard. The high gloss cabinetry is Cherry accented with Sapele Pommele burl. The salon is separated from the aft deck with a 316 stainless steel and glass sliding door. Along the starboard side is a light gray leather sofa with built in end tables at either end. Additionally there is a custom coffee table and 2 matching leather ottomans. Aft is a very comfortable upholstered lounge chair. Opposite and along the port side cabinetry houses the extensive entertainment system and 42" LG flatscreen.

Forward starboard and adjacent to the sofa is the built-in full service wet bar. Its amenities include a stainless steel sink, Kitchen Aid ice maker and generous storage.

A focal point in the salon and a work of art is the spiral tri-level stair case constructed with a combination of Cherry, stainless steel and brass. The stairs provide access below to the owner and guest staterooms as well as above to the flying bridge.

On the port side forward is the formal dining area with seating for 6. The adjacent buffet in addition has upper and lower cabinet storage.

The on-deck head is opposite the galley on the starboard side. Black Galaxy marble floor with matching vanity counter and a Kohler black sink with chrome and brass fixtures add to the handsome style together with the black, Galley Maid brand Euro head. A-Look polished stainless mirror overhead with recessed lighting together with a window provide sense of openness.

The décor is best described as neutral with predominate colors of gray, beige and black. The noticeably large windows have silhouette shades accented with roman duette style valances. There is indirect lighting in addition to the well placed high intensity general lighting. The air conditioning outlets are built-in around the soffits. This not only effectively hides the outlets but provides a uniform distribution of air circulation. The spacious salon is approximately 13' wide and nearly 19' long and the headroom is approximately 6' 10" to nearly 7' at the center.

Entertainment Equipment

- Entertainment center with stereo equipment
- LG 42" flatscreen TV
- Denon Receiver
- Polk Audio Reference Tuner
- Blue Ray #D DVD Player KVH TracVision
- Direct TV HD Receivers w/ Dolby
- Niles Integration Amplifier System

- Furman F-1000 UPS Surge protector and Voltage Stabilizer
- Velodyne subwoofer
- 4 channel speaker selector
- Boston acoustics speakers
- Storage for tapes, CD's and DVD's

Dining

While part of the salon the dining area has the appearance of being slightly separated by the cabinetry layout and decor. The Cherry and Sapele Pommele burl pedestal circular table easily seats 6 with wood chairs, black frame with Cherry backs and upholstered seats. Overhead is a circular Cherry border polished stainless steel light with inset lighting. Immediately forward is a built-in buffet with both drawer and cabinet storage below and lighted glass front cabinets above. An accent lighted mirror separates the cabinetry adding to the open airy feeling the entire salon area emanates.

Galley

The galley is located immediately forward of the dining area and just aft of the pilot house, primarily on the port side. Generous space the U-shaped configuration is large and well planned for culinary arts. Cherry cabinetry with drawers and cabinets provide an abundance of storage. The counters are black Avonite midnight sky and the flooring that continues into the pilot house is Amtico with simulated cherry wood grain. The flooring is accented with black diamond inserts. The overhead cabinets are mirrored on the bottoms and fitted with recessed lighting. Separating the overhead cabinets and the black Avonite counter, the walls are mirrored to the underside of the cabinets significantly enhancing the open appearance. At night the lighting has a dramatic effect. Air conditioning outlets surround the soffit space between the cabinets and the ceiling affording an even distribution of air along with an attractive and nearly hidden appearance.

Galley Equipment

- Frigidaire Gallery Series, stainless steel with black accents
- Dishwasher
- 24 cu. foot refrigerator and freezer with chilled water and ice dispenser.
- 4-burner glass top stove w/ oven and warming drawer
- Convection microwave oven with vent hood
- Double stainless steel sink Kitchen Aid garbage disposal
- Smoke alarm
- Pantry
- Cherry cabinet faces
- Washer/dryer Kenmore stack units are located in the forward companionway

Dinette

Open to the galley and occupying the starboard side of the pilothouse creates a country kitchen atmosphere. There is a built-in "L" shaped settee upholstered with medium gray color leather. The settee is slightly raised for easy access and the height affords a view while seated with the windows at eye level. The nearly rectangle black Avonite pedestal table is just the right size and seats 4 persons. The dinette can double as a navigation work area if desired. Just aft of the dinette and next to the galley is a built-in pantry.

Pilothouse

Located on the same level as the galley and dinette it affords excellent visibility. The helm is offset to the port side. Port and starboard deck access doors with pantograph aircraft style hinges open out to lay flat against the deck house sides. They are heavy duty and have dogged style latches for water tight integrity. The 2 person helm seat, upholstered in "taupe" baby Ostrich, has chart storage drawers below and a pull out foot rest. There is additional storage in the arm rests and cabinets on either side. The helm and instrumentation are laid out for easy use and convenience. In addition, therecessed overhead lighting are red lights for night time operation. Adjacent to the helm is the stair leading to the 2 forward staterooms.

Accommodations

The yacht is a beautiful 5 stateroom layout with unusual volume. She features 3 staterooms amidships and 2 staterooms forward. The configuration of 4 double staterooms providing berths for 8 owners and additionally, or forward cabins forward can be utilized for either crew or a guest. The yacht was designed with ease of handling and can be operated with minimal or no crew.

Beautifully decorated throughout, the polyurethane high gloss finish cabinetry is Cherry with Sapele Pommele burl accents. The very well planned main deck has a powder room, large size galley, both formal and informal dining areas, large salon with its adjoining aft deck and a pilothouse. The large windows are excellent for natural light and a view when seated or standing. The aft deck is open, but fitted with wing door deck access port and starboard.

Décor throughout the staterooms features custom designer soft goods variances for each stateroom. High gloss finish Cherry and Sapele Pommele cabinetry with vinyl muted gray padded walls and white Majilite vinyl overheads. Air conditioning outlets are built into the valances for a nearly hidden appearance and an even distribution of air. Additional highlights: recessed lighting, reading lights, accent lighting, digital individual air-conditioning controls, Fabrica cafe mocha carpeting, portholes, Luxaflex silhouette style window coverings and Central vacuum inlets.

Master Stateroom

Located about amidship and full width it is extremely well planned and very comfortable. From the starboard side is an athwartship walk-around island queen berth with custom mattress, a custom fitted cover and on either side are built-in night tables. Aft and adjacent to the aft head is the ladies vanity that can double as a desk. Additionally there is a large bureau, an abundance of drawer storage, 2-large walk-in cedar lined wardrobes, a full height mirror and upholstered valances with duette shades.

The built-in entertainment center with Sony equipment includes: stereo system and receiver, 27" XBR IV w/wireless headset, VCR, CD player & DVD, AM/FM tuner with headphone jacks for AN system, speakers and a Datronics TV antenna.

Aft is a hidden door for direct engine room access or emergency exit if necessary. This access is in addition to the primary transom/swim platform main engine room passage.

Master Head

- Port side are the separate his and hers heads connected with a walk-thru shower.
- "Cream Marfil" marble tile floor with Marble inlays
- Marble counter tops
- White Kohler sinks with chrome and brass fixtures
- Opening porthole with screen & stainless storm cover
- Central vacuum inlet
- Fabrica carpeting
- Automatic emergency rope lighting
- Indirect floor lighting & ceiling lights

Guest Stateroom 1

Located amidships and port side with its entry from the common foyer for the other amidship guest stateroom and the master suite. It has a queen size outboard bed with storage below and a custom fitted bed cover. The valance is upholstered to match and the port lights covered with duette shades. Outboard is the full height cedar lined wardrobe with mirrored door. There is a built-in entertainment center with Toshiba TV with DVD and Sony stereo. Forward is the ensuite head with a large stall GRP shower, built-in Avonite "autumn wheat" top vanity with Kohler sink, polished mirrored ceiling and marble floor.

- Opening porthole with screen & stainless storm cover
- Central vacuum inlet
- Fabrica carpeting
- Automatic emergency rope lighting
- Indirect floor lighting & ceiling lights

Guest Stateroom 2

Located directly opposite the port guest stateroom and identical in size it however has twin single berths each with storage below. Aft, to starboard, is a cedar lined full height wardrobe with a mirrored door. Upholstered valance over port light with Hunter Douglas duette shades. Outboard is the built-in entertainment center with Toshiba TV/DVD and Sony stereo. Forward is the ensuite head with a large stall GRP shower, built-in Avonite "autumn wheat" top vanity with Kohler sink, polished mirrored ceiling and marble floor.

- Opening porthole w/screen and stainless storm cover
- Indirect floor and ceiling lights
- Fabrica carpeting
- Automatic emergency rope lighting

Guest Stateroom 3/Captain Island Queen

Located forward in the bow section, this spacious stateroom is suitable to serve as a captain's quarters or as a guest stateroom. There is a shared head with shower that services this stateroom as well as the port side single berth cabin. The stateroom features a queen size island walk around bed, generous storage overhead as well as below the berth. This is a very comfortable double cabin. Either side outboard are cedar lined full height wardrobes. To starboard and built in is the LG TV and DVD player with the Sony stereo. There is automatic rope emergency lighting, indirect floor & ceiling lighting, hatch to the forward deck with a LuxaFiex sun shade, MarineAir digital AC control and central vacuum inlet. Décor is essentially the same as the other staterooms with subtle tan tone vinyl wall coverings and white vinyl overhead.

Shared head and shower

- Off white "cream marfil" Marble floor
- Avonite top hard surface vanity
- White Kohler sink with chrome and brass fixtures
- Built-in medicine style mirrored front cabinets
- Mirrored ceiling with recessed lighting
- The GRP easy maintenance stall shower is forward.

Office/Crew

The single berth cabin is suitable for a captain, if so desired. It has a good sized outboard berth with a custom bed cover. Below is storage and adjacent a cedar lined wardrobe. Aft is a good sized desk with drawer storage. There is a port light, silhouette style blinds and the valance is upholstered to match the bed cover. This cabin shares the large head with shower that is opposite the companionway to starboard. The same décor theme is carried out in this stateroom is in the salon and throughout the yacht. Separate air conditioning control.

Laundry

The over and under washer and dryer are located at the forward end of the companionway.

Aft Deck

With its access from either side sheltered with weather protecting clear Plexiglas wing doors and from the port side swim platform stair. Aft slightly to starboard is a built-in GRP bench seat with storage. There is a good sized stainless steel pedestal and GRP top table. In addition to the built-in seating are teak lounge chairs and portable folding chairs. Forward and to starboard is the secondary flying bridge access ladder. The aft deck is covered and sheltered by the boat deck. This is a delightfully open lounge area and an ideal place for alfresco dining or just relaxation. The deck area is teak. The lounge cushions are Sunbrella, tan with predominate black and white accent stripes. The chairs are upholstered to match. One of the remote Caterpillar remote control locations is here.

Fly Bridge

Dual access from either the aft entry ladder from the starboard side of the aft deck or the interior weather protected stair with its sliding stainless steel and glass access hatch on the starboard side of the bridge. A sliding stainless steel railing protects the access hatch area for safety. The fly bridge seating area is covered with a built in hardtop in combination with the arch structure. There is a single helm seat and to port a double bench seat.

Port side has a "U" shaped built-in seating with storage below and a stainless steel pedestal ORO top table. Starboard built-in GRP seating is slightly smaller and it adjoins the interior entry stair hatch cabinetry.

There is GRP built-in cabinetry aft of the seating area. On the port side is the Jenn·Air electric double burner grill with storage below. In the same cabinet is a U·Line combination refrigerator and icemaker. On the starboard, side and aft of the seating additional built-in cabinetry has a sink and storage lockers.

The port side aft safety railing is removable to facilitate the dinghy launch and retrieval.

- Novurania 430DL Deluxe RIB tender, console steering, bow rails, lighting, depth finder, built-in seating
- Yamaha 60 hp 4 cycle outboard

- Nautical Structures EZ1500 lb. hydraulic davit

Deck House and Main Deck

- Frameless window system
- Easy walk fiberglass non-skid around side decks are protected with boat deck overhangs
- Fore deck port and starboard built-in storage lockers
- Deck lighting
- Foredeck recessed area ideal for a sun lounge
- Anchor windlass is recessed into the fore deck and covered with flush hatches providing a very pleasant and safe foredeck area

Hull and Deck

The hull, decks & superstructure are constructed of Divinycell cored fiberglass. Weight is approximately 120,000 lbs.

- Heavy duty polished stainless steel mooring cleats, bollards & fairleads all well placed
- Paint Awlcraft 2000
- Maxwell model 3500 electric windlass
- 75 lb. Bruce anchor, bow roller approximately 200' chain rode and locking system
- Deck mounted foot switches for foredeck anchor operation
- Custom hinged radar mast
- 1" Lexan aft cockpit wing doors
- Courtesy lights
- Bow rail 1 1/4" 316 polished stainless steel
- 4 side boarding gates: 2 fore & 2 aft either side
- Canvas covers for: aft deck, flybridge seating and helm chairs
- Textline windshield cover
- Tracy Sea stairs boarding ladder
- Fresh water wash downs, fore and aft

Swim Platform, integral to the hull

Removable three stage hoop railing that hinges to be out of the way

Scandvik hot and cold shower

The port side aft deck stairs lead to the teak swim deck integral platform. There are two hydraulic opening storage pods, one on both sides and the watertight engine room access door.

Electronics and Navigation

- {Time Zero} Nobel Tech Chart plotting program with dedicated computer and power source
- (2) Standard Spectrum DCS VHF's
- (4) Newmar PA 30/20 hailer horns
- 2-Furuno color NavNet sea map plotters/64 mile radars
- 10.4" LCD, pilothouse and flying bridge
- NavNet fish finder dual frequency
- Panasonic KX- T7030 BTS phone w/I.C
- Panasonic KX -T7020 BTS phone
- Panasonic KX - TG2553B 2.4 GHZ
- APC 80650 UPS backup power supply dedicated to the navigation electronics
- Video interface kit for NavNet display
- Network Hub 20/200 base-T
- 12-Channel GPS antenna receiver
- Furuno digital heading sensor ARP
- B & G depth & speed display network
- Simrad Robertson AP20 autopilot
- Robertson AP20 head flying bridge station
- Rudder angle indicator
- ACR 100 Halogen remote control search light
- Buell dual trumpet air horns
- 3-Windshield wipers with fresh water washes
- Naiad Marine HPS hydraulic bow thruster control
- Twin Disc electronic main engine controls
- Naiad stabilizer controls
- Caterpillar digital readouts
- Headhunter Tank Sentry systems
- TS3002 & TS3003 for the 5 fuel tanks (port midship, stbd. midship, port aft, engine room tank and stbd. aft tank)
- PLC Alarm status panel: engines, bilges and security
- 8" Richie Compass

Mechanical and Engine Room

- Engine driven emergency bilge pump
- Naiad HPS hydraulic system for the bow thruster and stabilizers
- Generator remote gauge panels in the engine room
- Generators and main engines fitted with a Racor fuel filters
- Main engines fitted with underwater exhaust with thru transom bypass
- Engine room air ventilation system fitted with fire suppression doors
- Panasonic PBX telephone system throughout
- Stainless steel top workbench with sink and vise
- ZF 2.030:1 reduction gears
- Dripless shaft seals
- Engine room transom door access with aircraft style panagraphic style hinges so it lays flat
- Fuel transfer pump
- Fill Rite fuel transfer meter
- Fuel transfer manifold
- {2} 30 gallon electric water heaters
- Galley Maid head system, fresh water flush
- {2} 4-ton staged Marine Air 230 volt reverse cycle chilled water air conditioning compressors
- HPS/Naiad hydraulic bow thruster
- Twin Disc Power Commander electronic engine controls with 2 main stations & 3 remote plug in stations
- Halon manual and automatic fire control systems
- Caterpillar engine instrumentation gauges
- 5-blade Nibral propellers
- Raw water sea strainers & external strainers
- Aquamet 22 shafts
- Electric and pneumatic fuel gauges
- Naiad 302 stabilizers
- Hynautic power wheel steering system
- Soundown engine room sound insulation
- Racor triple manifold fuel filters for main engines
- Fuel shut-off valve, manifold & transfer pump
- Fuel Coolers
- 125 gallon black water tank with macerator pump or deck pump out
- Automatic sump pump
- 125 gallon gray water sump tank
- Stainless drip trays under engines
- Lube oil change systems for all engines
- Dual intake blowers via air vents hull side with automatic fire damper

Electrical System

- 100 amp shore power inlet
- Smart-Y twin 50 amp to 100 amp adapter
- Glendenning cablemaster 100 amp shore power with approximately 100ft. electrical cable
- Sentry 24 volt 50 amp battery chargers
- Sentry 12 volt 20 amp battery chargers
- Gel cell Batteries: 2 sets of 24 volt 220 amp hr. battery banks for engine starting & ships service
- 2 sets 12 volt 180 amp hr. battery banks for generator starting
- Acme 25 KVA shore power transformer
- Battery parallel switch
- 24 VAC interior & exterior AC electrical system
- 24 VDC electrical system
- 20 kW Northern Lights generator w/hush box approximately 1900 hours
- 32 kW Northern lights generator with PTO hydraulic drive, approximately 2600 hours
- Vimar flush style interior wall switches

Recent Upgrades

- Stabilizer Ram seals and feedbacks replaced
- 32kw generator rotor and control head (Digital) replaced
- New Battery Chargers
- New AGM Batteries
- New AC thermostat controls
- New AC evaporators
- AC black light bacteria control and allergy control keeps boat fresh
- Furman UPS Surge protector and Voltage Stabilizer
- New AC Chillers soft starts and control panel
- Caterpillar Engines serviced
- Heat exchangers serviced
- Starboard Engine raw water pump replaced
- Spare AC raw water pump
- Spare Galley Maid head pump
- Spare engine/generator belts & miscellaneous
- Fuel coolers added
- Custom hinged radar mast
- New High Definition IV antennae
- HD receivers in Salon, Master and VIP
- Tender serviced

Remarks

An exceptionally spacious 74' Sport Motoryacht in absolutely impeccable condition. Boat house kept its whole life and shows beautifully as a result. Built by very knowledgeable and experienced owners, the Yacht was configured to be easily operated by owner or small crew. Easy access walk-around side decks, a generous 20' beam, spacious dual access flying bridge with hardtop and throughout the yacht an elegant understated neutral décor. The hull form provides a sea kindly ride with a good turn of speed. The yacht is immaculate reflecting great care and maintenance. All machinery has had fastidious care using only the best quality lubrication, Mobil Del Vac 1, in all mechanical components.

Исключения

При продаже яхты исключаются личные вещи владельца.

Отказ от ответственности

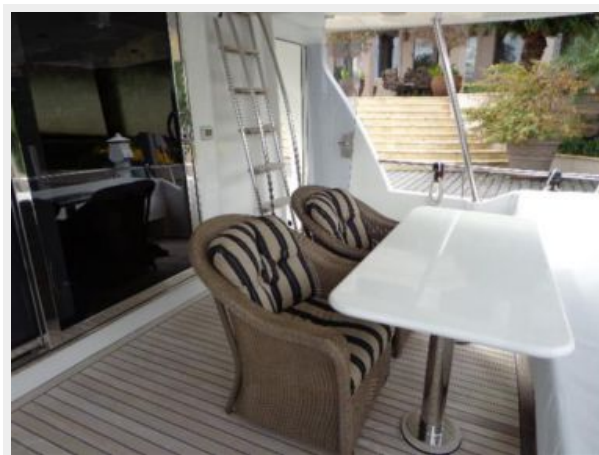
Компания предоставляет описание судна или яхты добросовестно, но не может гарантировать точность этой информации, а также не ручается за техническое состояние. Покупатель должен проинструктировать своих агентов или оценщиков исследовать представленную информацию более подробно, по собственному желанию. Продажа судна или яхты, изменение цены или снятие с продажи будет происходить без предварительного уведомления.

ФОТОГРАФИИ

Aft Deck seating



Aft Deck



Salon view aft



Salon fwd



Salon port side



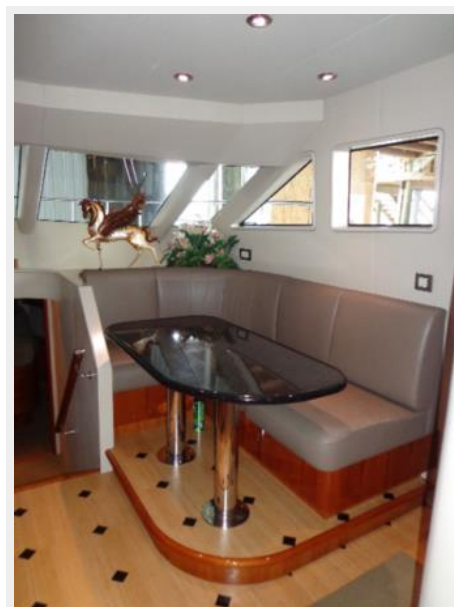
Dining



Galley



Dinette



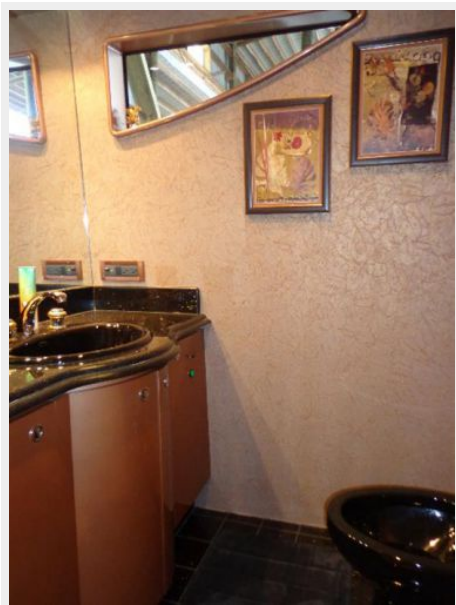
Pilothouse



Staircase to flybridge



Dayhead



Master



Master



Master Head



Master Shower



Guest Stateroom 1



Twin Guest Stateroom 2



Guest 3/Captain Island Queen



Crew/Office



Flybridge



Flybridge



Flybridge Helm



Sidedecks



Hinged Radar Mast



Engine Room



Engine Room



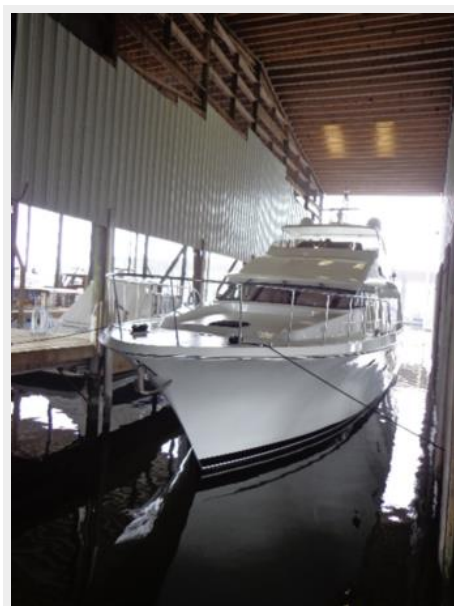
Engine Room



Stern



Under shed



КОНТАКТЫ

Андрей Шестаков (Andrey Shestakov) – ведущий яхтенный брокер отдела продаж яхт и судов компании Shestakov Yacht Sales Inc. Официальный представитель Shestakov Yacht Sales Inc. для русскоговорящих клиентов в центральном офисе компании в Майами/Форт Лодердейл/Флорида/США.

Контактная информация

Email: andrey@shestakovyachtsales.com

Web: shestakovyachtsales.com

Телефоны

Краснодарский край: **+7(918)465-66-44**

США, Майами, Флорида: **+1(954)274-4435**

Время работы

Понедельник – Суббота: **9:00 - 21:00**
EDT

Воскресенье: **Закрито**

Адрес



Harbour Towne Marina, 850 NE 3rd St,
STE 213, Dania, FL 33004