

## MONKEY II — HATTERAS



**Builder:** HATTERAS

**Year Built:** 1989

**Model:** Sport Fisherman

**Price:** PRICE ON APPLICATION

**Location:** United States

**LOA:** 45' 0" (13.72m)

**Beam:** 14' 6" (4.42m)

**Min Draft:** 4' 7" (1.40m)

Our experienced yacht broker, Andrey Shestakov, will help you choose and buy a yacht that best suits your needs **Monkey II — HATTERAS** from our catalogue. Presently, at Shestakov Yacht Sales Inc., we have a wide variety of yachts available on our sale's list. We also work in close contact with all the big yacht manufacturers from all over the world.

If you would like to buy a yacht **Monkey II — HATTERAS** or would like help answering any questions concerning purchasing, selling or chartering a yacht, please call **+1(954)274-4435**

# TABLE OF CONTENTS

TABLE OF CONTENTS	2
SPECIFICATIONS	4
Overview	4
Basic Information	4
Dimensions	4
Speed, Capacities and Weight	4
Accommodations	4
Hull and Deck Information	5
Engine Information	5
DETAILED INFORMATION	6
Overview	6
Salon	6
Galley	6
Master Stateroom	7
Forward Stateroom	7
Electronics	7
Electrical System	7
Mechanical Equipment	8
Decks	8
Exclusions	8
Broker's Remarks	8
Exclusions	8
Disclaimer	9
PHOTOS	10
CONTACTS	14
Contact details	14
Telephones	14
Office hours	14

---

Address

14

---

# SPECIFICATIONS

---

## Overview

---

1990 Hatteras 45 Convertible Sportfisherman with rebuilt Detroit's Clean Engine room Ready to cruise or fish Seller Motivated and Requests offers

## Basic Information

---

**Category:** Sport Fisherman

**Sub Category:** Convertible

**Model Year:** 1990

**Year Built:** 1989

**Country:** United States

**Vessel Top:** Half Tower

**Fly Bridge:** Yes

**Cockpit:** Yes

## Dimensions

---

**LOA:** 45' 0" (13.72m)

**Beam:** 14' 6" (4.42m)

**Min Draft:** 4' 7" (1.40m)

**Clearance:** 14' 3" (4.34m)

**MFG Length:** 45' 8" (13.92m)

## Speed, Capacities and Weight

---

**Displacement:** 43800 Pounds

**Water Capacity:** 165 Gallons

**Holding Tank:** 120 Gallons

**Fuel Capacity:** 590 Gallons

## Accommodations

---

**Total Cabins:** 2

**Sleeps:** 6

**Total Heads:** 2

---

## Hull and Deck Information

---

**Hull Material:** Fiberglass

## Engine Information

---

**Engines:** 2

**Manufacturer:** Detroit Diesel

**Model:** 6V92T

**Engine Type:** Inboard

**Fuel Type:** Diesel

---

# DETAILED INFORMATION

---

## Overview

---

The Hatteras 45 Convertible built during 1989-1991 is an updated version of the original Hatteras 45 produced from 1984 through 1988. Incorporating the company's new look, styling with reworked cabin windows and a new flybridge layout, the interior was changed as well with an enlarged master stateroom sporting a walk around queen bed. A huge U-shaped sofa to starboard, dry bar with refrigerator and glass storage to port, and entertainment center forward highlight the salon. The galley is down and to port, across from the master stateroom with its walk around queen berth and private head compartment. Forward of the galley is the washer dryer, while the guest stateroom at the bow is fitted with over/under bunks. The massive 132 square foot cockpit of the original 45 Hatteras remains unchanged. It was the largest in her class during the late 1980's and still ranks among the better cockpits Hatteras ever designed. A freezer, bait station with sink, and transom door with gate were standard, and a big in deck livewell was optional. (PowerBoat Guide)

## Salon

---

U-Shaped Settee with hi-lo table

Liquor Storage Locker

Icemaker

Entertainment Center with Flat Screen TV & Stereo System

Teak Wall Covering

## Galley

---

GE Upright Refrigerator/Freezer

Ice Maker

2 Burner Electric Stove

Stainless Steel Sink

Hot & Cold Pressure Water System

Built In Storage

Convection Oven

---

## Master Stateroom

---

Angled Queen Berth

Private Head With Stall Shower

Built In Storage

---

## Forward Stateroom

---

Over-Under Berths

Washer/Dryer

---

## Electronics

---

Ritchie Compass

Garmin 3010C GPS Map

Furuno Radar Plotter RP100

Horizon Fathometer

IC-M60 VHF

M45 VHF Radio

Robertson Auto Pilot

Rudder Angle Indicator

Furuno GPS Navigator

Furuno GP-1650 DF Color Plotter/Sounder

Dual FloScan Fuel Monitoring System

Glendinning Engine Synchronizer

Kenwood AM/FM/CD Stereo

---

## Electrical System

---

110/220 vold AC Sytem & 12 Volt DC System

8kw Onan Generator

Schematics for All Systems

Automatic Battery Charger

## **Mechanical Equipment**

---

Reverse Cycle Air Conditioning

Hydraulic Steering

Fuel/Water Separators

Bilge Pumps

Halon Fire Extinguishing System

Trim Tabs

Emergency Engine Shutoffs

## **Decks**

---

Bow Pulpit

Anchor Windlass

Aluminum Half Tower with Enclosures

Dockside Water Inlet

## **Exclusions**

---

Seller's Personal Items

## **Broker's Remarks**

---

Has low hours on rebuilds.

## **Exclusions**

---

Owner's personal belongings.



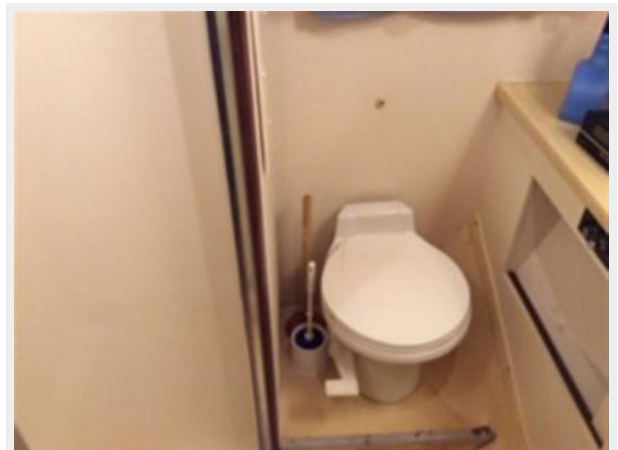
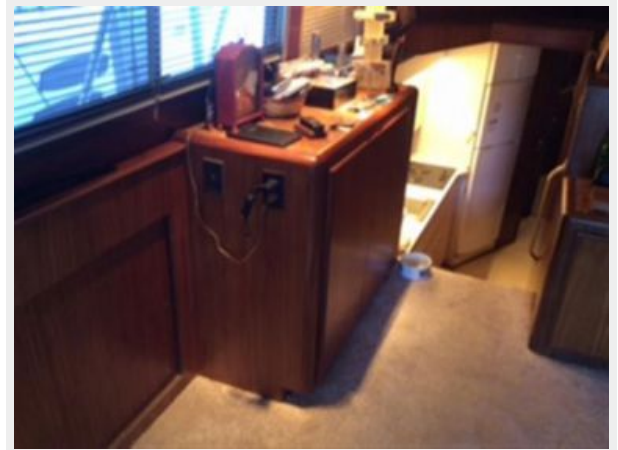
---

## Disclaimer

---

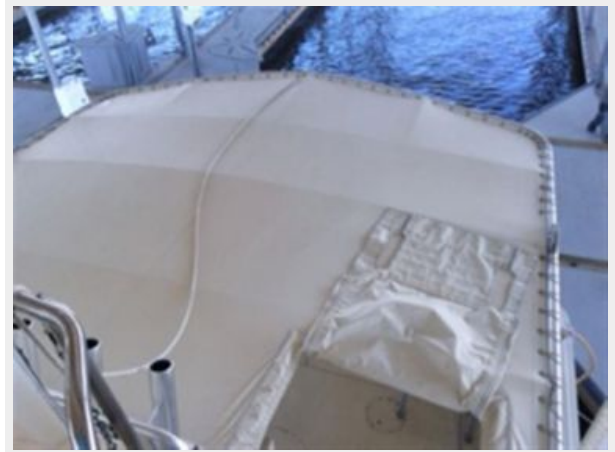
The Company offers the details of this vessel or yacht in good faith but cannot guarantee or warrant the accuracy of this information nor warrant the condition of the vessel. A buyer should instruct his representatives, agents, or his surveyors, to investigate such details as the buyer desires validated. This vessel or yacht is offered subject to prior sale, price change, or withdrawal without notice.

# PHOTOS











---

# CONTACTS

---

Andrey Shestakov, leading yacht broker of the sales department of Shestakov Yacht Sales Inc. Shestakov Yacht Sales Inc., the official representative of the Miami/Fort Lauderdale FL headquarters.

---

## Contact details

---

Email: [andrey@shestakovyachtsales.com](mailto:andrey@shestakovyachtsales.com)

Web: [shestakovyachtsales.com/en/](http://shestakovyachtsales.com/en/)

---

## Telephones

---

USA: +1(954)274-4435

---

## Office hours

---

Monday – Saturday: **9:00 - 21:00** EDT

Sunday: **closed**

---

## Address

---



Harbour Towne Marina, 850 NE 3rd St,  
STE 213, Dania, FL 33004