

OUR TRADE - 85E05 — OCEAN ALEXANDER



Судостроитель: OCEAN ALEXANDER

Год постройки: 2011

Модель: Моторная яхта

Цена: ЦЕНА ЯХТЫ ПО ЗАПРОСУ

Местонахождение: United States

Длина общая: 85' 0" (25.91m)

Ширина: 20' 1" (6.12m)

Мин. осадка: 5' 4" (1.63m)

Макс. осадка: 5' 11" (1.80m)

Купить **OUR TRADE - 85E05 — OCEAN ALEXANDER** а также выбрать подходящую вам яхту из нашего каталога яхт вам поможет опытный яхтенный брокер Андрей Шестаков. На сегодняшний день компания **Shestakov Yacht Sales Inc.** имеет большое количество яхт в собственном списке продаж, а также тесно сотрудничает со всеми крупными яхтенными производителями по всему миру. Для того чтобы купить яхту **OUR TRADE - 85E05 — OCEAN ALEXANDER** а также проконсультироваться по любому вопросу связанному с покупкой, продажей, чартером яхт позвоните по телефону **+7(918)465-66-44**.

ОГЛАВЛЕНИЕ

ОГЛАВЛЕНИЕ	2
ХАРАКТЕРИСТИКИ	5
Основная информация	5
Размеры	5
Скорость, вместимость и масса	5
Размещение	5
Корпус и палуба	5
Информация о двигателе	5
ПОДРОБНОЕ ОПИСАНИЕ	6
Remarks	6
Accommodations & Interior	6
Construction	10
Mechanical	11
Plumbing	13
Electrical	14
Exclusions	17
Исключения	17
Отказ от ответственности	17
ФОТОГРАФИИ	18
Salon - Side View	18
Salon - Side View	18
Salon	18
Salon Bar	18
Formal Dining	18
Galley	18
Galley	19
Galley / Pilothouse	19
Pilothouse	19

Pilothouse Dinette	19
Companionway to Staterooms	19
Companionway to Master Stateroom	19
Master Stateroom	20
Master Stateroom	20
Master Head	20
Master Head	20
Master Head	20
VIP Stateroom - 1	20
VIP Stateroom - 1	21
VIP Head	21
Laundry	21
VIP Stateroom - 2	21
VIP Stateroom - 2	21
VIP Stateroom - 2 Head	21
Crew Quarters	22
Crew Cabin	22
Crew Head	22
Lazarette	22
Flybridge	22
Flybridge	22
Flybridge Helm	23
Flybridge Helm	23
Flybridge Seating	23
Flybridge Bar	23
Sun Lounge	23
Boat Deck - Tender not Included	23
КОНТАКТЫ	24
Контактная информация	24

Телефоны	24
Время работы	24
Адрес	24

ХАРАКТЕРИСТИКИ

Основная информация

Тип судна: Моторная яхта

Модельный год: 2012

Год постройки: 2011

Страна: United States

Размеры

Длина общая: 85' 0" (25.91m)

Ширина: 20' 1" (6.12m)

Мин. осадка: 5' 4" (1.63m)

Макс. осадка: 5' 11" (1.80m)

Скорость, вместимость и масса

Водоизмещение: 171600 Pounds

Вместимость воды: 350 Gallons

Вместимость сточного бака: 200 Gallons Объем топливного бака: 2500 Gallons

Размещение

Всего кают: 3

Корпус и палуба

Материал корпуса: Fiberglass

Информация о двигателе

Двигатели: 2

Производитель: MTU

Модель: 10V2000

Тип двигателя: Inboard

Тип топлива: Diesel

ПОДРОБНОЕ ОПИСАНИЕ

Remarks

85' 2012 Ocean Alexander. 1600HP MTU 10V2000's with 380 Hours. Original owner! Walnut Interior! Palm Beach Condition! Our Trade, Priced to Sell!

Accommodations & Interior

SALON:

- Grohe 3100100 (with 18026 Trio spoke handles) bar faucets in lieu of standard
- Frank RT505 (salon)
- LCD 42" TV with professional A/V System with IR repeater
- Loose end tables
- Phantom screen (for insects & pollen protection) with dedicated wood box for door
- 24V LED lights (Aerospace quality, specially tuned color temperature for Ocean Alexander that last over 100,000+ hours)
- Salon table
- Sunpentown wine cooler inside locker of Salon
- Wood paneling and cabinetry

MASTER STATEROOM:

- LCD 32" TV with professional A/V system with IR repeater and subwoofer
- King-sized berth
- Two nightstands with countertop
- Ultraleather upholstered headboard
- Bureau and vanity on starboard side
- Safe in hanging locker
- Fixed windows on hull side
- Full-height, cedar-lined hanging lockers with automatic lighting
- Dressing mirror
- Twin heads in two sides of shower

GUEST STATEROOMS:

- LCD 22" TV & DVD disc player
- Audio stereo and video system with IR repeater
- Queen-sized berths
- Dressing mirror
- Cedar-lined hanging lockers with automatic lighting
- Stainless steel rectangular port light with privacy screen
- Head opposite starboard with stall shower (Port Guest Stateroom)

CREW QUARTERS:

- Captain's cabin & crew cabin
- Cedar-lined hanging locker with automatic lighting
- Kitchenette (sink, microwave and refrigerator)
- Drawers under bunk
- Head with stall shower
- Additional washer/dryer in crew quarters

HEADS:

- Wood walls & cabinets with customer selected granite or marble countertops
- Customer selected /heated granite floor (MSR, port guest, VIP and day head)
- China sink
- Grohe faucets for sink and shower
- Custom bathroom hardware
- Custom bathroom fixtures
- Air extraction in each head shall be by low noise extraction fans, switched separately from lights. Fans to discharge air outside
- One medicine cabinet
- Tecma toilet system
- Vent blower
- Seamless fiberglass stall shower with one-piece shower stall design provides long term protection against moisture, water intrusion behind the shower panels – leading to foul odors and water damage
- Stainless steel rectangular port light with screen
- Shower door with Granite or Marble frame
- Mirrored sliding cabinet door under head port light

- Day Head on Main Deck

GALLEY:

- Franke PSX1103010/16 Galley sink in lieu of standard Franke ZRX620D/B
- Franke FFPS200 Galley faucet in lieu of standard Franke FL902
- Granite or marble for Galley countertops
- Walnut cabinetry
- Storage cabinets
- Custom plate holder drawers
- Appropriately sized (or over-sized) silverware and cutlery drawers
- Franke Double sink with pull out faucet
- “Drawer Type” shelves in large galley cabinet
- Overhead dish locker forward
- Overhang cabinet in Galley
- Whirlpool garbage disposal
- 36” JennAir Custom Panel French Door refrigerator
- 30” JennAir Over-the Range Microwave with Speed-Cook Convection
- 30” Gaggeneau electric cooktop
- Stainless steel potholder for cooktop
- Gaggeneau electric oven
- 15” Whirlpool trash compactor
- 24” Fisher/Paykel dishwasher
- Granite/Marble floor in galley

INTERIOR DÉCOR:

- Walnut wood throughout interior
- Wood paneling and cabinetry
- Soft vinyl headliners
- Designed pull handles for drawers & cupboards
- Wood for window frames and bull-nose
- Majilite Fabric for lower walkway walls
- Concealed hinges throughout interior cabinets with auto soft-closing function that prevents a kitchen cabinet door from slamming, as it slowly and silently brings the door to a closed position
- Mattresses for berths (independent his/her construction allowing for disturb free movement during sleep)

- Stainless Steel hardware
- Natural interior finish
- Wood flooring in Pilothouse and granite flooring in Galley
- Hanging lockers with dual-locking mechanism
- Whirlpool WFC7500VW washer & Maytag 2400AWW stacked dryer
- U-line combo refrigerator in foyer

EXTERIOR:

- Painted Exterior
- Danze 151544 bar faucets in lieu of Grohe 3100100 (with 18026 trio spoke handles) (Flybridge, aft deck)
- Wet bar with U-line 229 combo refrigerator on aft deck
- Teak swim platform with teak steps
- Teak deck for aft deck and sidewalk way to mid ship
- Exterior canvas package including tables, windows, settees and sunpad
- 22" TV above aft deck bar
- Hardtop with dual hatches for ventilation and light
- 2" elliptical 316 Stainless steel handrails on main deck, 1-1/2" on Flybridge
- Stainless steel cleats & hawseholes
- Stainless steel anchor roller
- Stainless steel light bracket
- Tempered dark tinted window glass (1/2" in forward Pilothouse, 3/8" other areas). Glass is Low-E glass which increase energy efficiency by 25%+ and is UV stabilized for reduction of fading and degradation of a yacht's interior and health of occupants due to harmful UV rays
- Fiberglass staircase from Aft Deck to Flybridge
- Wet bar with sink, grill and bar refrigerator on Flybridge
- Flybridge seat with storage underneath
- Weather-tight doors at Pilothouse
- Four U-shaped rails on swim step
- Boat Deck sliding hatch
- Side boarding gates at Aft Deck
- Custom strength Flybridge internal structure
- Custom sun pad in bow
- Stainless sink at Aft Deck
- Exterior canvas cover (including tables, windows, settees, sunpads, etc.)

PILOTHOUSE/DINETTE:

- Sunken and extended dash with instrumentation

- L-shaped dinette
- Wood tabletop
- Windshield defrosters
- Weather tight doors to side deck
- Phantom screen (for insects & pollen protection) with dedicated wood box for door
- Pantograph doors in Pilothouse

Construction

GENERAL:

- Vinylester resin
- Longitudinal and lateral fiberglass stringers filled with high-density foam
- Reinforced collision bulkhead
- Fiberglass with infusion and “vacuum bag technology”
- Ocean Alexander employs various techniques to reduce sound and vibration. Focusing on providing a quiet and comfortable yachting environment through various proprietary techniques of controlling sound and noise transmission. Some of these techniques include, multiple insulation barriers including reflective materials, absorptive materials, dampening materials, air pockets and flexible and isolation mounts. Ultimately resulting in vibration/sounds levels that are industry leading and at times ó to 1/10 of ISO 6954 requirements
- Frameless window
- All exterior hardware to be stainless steel 316 or to manufacturer requirements

HULL/BOTTOM:

- Black boot top stripe
- Interior structural components all bonded to hull
- Three coats of Seahawk primer, hi-build epoxy barrier coat and covered with two coats of Seahawk self-polishing bottom paint
- Bronze through-hull fittings

DECK/PILOTHOUSE:

- White non-skid fiberglass decks

- Deck, superstructure and flybridge with aluminum I-beam reinforcements
- Fiberglass settee with oval teak sliding table on Aft Deck
- Swim ladder
- Stainless steel transom gates for pets/children protection

Mechanical

MAIN ENGINES:

- MTU 10V2000 1600HP engine includes 24-month total warranty and 60 months for major components
- Two control stations: Flybridge & Pilothouse, with complete engine instrumentation with lighted, modern switches
- Engine hour meter
- Electric engine control
- Engine alarm system (oil and temperature)
- Delta T intake/exhaust fans with variable frequency drives shall be mounted to facilitate the pushing and/or pulling of air through the machinery spaces and the providing of a high rate of air exchange. Ducts shall have fire dampers installed with manual/automatic triggering which shall be tied into the machines shut down circuits. Ducts in way of interior living space shall be insulated and soundproofed. System of Delta-T water separator grilles used on intake and exhaust sides of System Delta T intake/exhaust fans with demister to eliminate moisture from the intake air flow to keep machinery spaces dry
- Wet exhaust and including water temperature, oil pressure, hour meter and remote start/stop controls in engine room and remote start/stop controls in the pilothouse
- Propeller shaft Aqua 22HS (22HS is a high grade austenitic alloy stainless steel that provides superior corrosion resistance (comparable to Aqua 22) along with excellent toughness and high strength (comparable with Aqua 17), a no compromised approach adopted by the navies around the world)

GENERATOR:

- Kohler 32KW genset includes 5-year/ 2,000-hour total warranty (2x)
- Generator exhausts to be water-drop type per “Centek”, “Marine Exhaust Co.” or equal
- Generator set resiliently mounted and installed with sound shield & vibration dampener
- Generators with gas/water separator

THRUSTER/STABILIZERS:

- ABT hydraulic bow thruster 25HP, stern 25HP with proportional control
- ABT hydraulic stabilizers (9 Sq.ft. x 2) with one monitor in Pilothouse & additional one on Flybridge
- Underwater exhaust system
- Stainless steel rail on side of engines
- Oil changing system for both engines & gensets

WINDLASS/MOORING:

- Hydraulic windlass, VWC4000C
- Stainless steel plow type anchor 125lbs with 300' anchor chain (3/8" HT) & chain stopper
- Chain counter

STEERING/CONTROL:

- Hydraulic steering system by Hynautic/Teleflex power steering system
- Stainless Steel rudders
- Bronze struts with cutlass bearing
- High performance, computer-designed and machined class "S" propellers
- Zincs on rudders, shafts
- Steering wheel Pilothouse & Flybridge
- Three (3) valves in steering system for autopilot
- Stidd helm chair in Pilothouse x1 (doe)
- Stidd Mechanical helm seats in Flybridge (white) x3
- Dripless engine shaft seal logs
- Dripless seal for rudderpost
- Third control on aft deck (engine and thruster)

MECHANICAL OTHER:

- Spare conduit running from engine room to Pilothouse, Engine Room to Flybridge and Engine Room to Flybridge overhang (under)

- Color-coded piping for fuel, water and hydraulic system
- Hydraulic 1750lbs davit (21,000 ft-lb 3 function hydraulic boom, rotation and extension)
- Fire Boy Fire extinguisher system with engine-shutdown feature
- Heavy duty Kahlenberg dual air horn
- All engine room and machinery spaces shall be primed and top coated with polyurethane paint system
- Aluminum diamond plate flooring in engine room
- Hepworth heavy-duty commercial grade pantograph windshield wipers & washers with intermittent function
- Detailed stringers in engine room and lazarette
- Stainless steel cap on transverse stringers in central walkway
- 2HP air compressor in engine room with multiple quick disconnect outlets
- Interceptor blades, custom conforms to tunnel shape
- OA made fixed trim
- Gulfcoast fuel polishing system based on US Military Abrahams M1 tank design
- Seagull water purifier (ADEX design award winner with filtration to 0.1 microns & EPA certification for microbiological purification)
- Two Maxwell VC2500 vertical electric rope winches for aft deck
- Headhunter waste treatment system (50 gal/day)

Plumbing

FRESH WATER SYSTEM:

- Headhunter pressure fresh-water system
- 2mm thickness stainless steel water tank with sight gauge
- Fresh water outlet with hose for engines & generators
- Fresh water wash down, at bow & stern & boat deck
- Sea Recovery 900G/Day water maker

HOT WATER HEATER:

- One 40-gallon water heater with high-density fiberglass with high efficiency heating element
- Sea Recovery 900 G/Day water maker
- Additional 30-gallon water heater in bow thruster space (total 70 gallons)

FUEL SYSTEM:

- 4.5mm thickness 5052 Aluminum fuel tanks with sight gauges and tested to International Standards 33CFR 510(a) with high and low fuel level alarm system
- Dual Racor fuel/water separator with Y-valves for engine & generator

BILGE/DISCHARGE:

- Common drainage system for sink, shower, bilge & exterior deck
- Bilge pump in forward and aft of engine room
- Automatic bilge pump – The vessel shall be outfitted with automatic bilge pump with manual and automatic switches in each space as divided by weather-tight bulkheads. High water alarms will be mounted in each of the these bilge zones
- 24V shower sump pumps
- One manual bilge pump
- Dry bilge area arrangement in center of engine room

DECK/FLYBRIDGE:

- Dockside water connection
- Both side fillers for water & fuel tanks

Electrical

BATTERY:

- Heavy-duty batteries (house banks: 825 AH, engine batteries: 550AH, genset batteries: 490AH)
- Battery paralleling system with control switch
- Service battery switch

AIR CONDITIONING:

- Cruisair compressors for central air conditioner, 6 units, total 146K BTU (Reverse Cycle capable for operation down to 40F)
- FB air condition 24,000 BTU
- Electric heater coils in entire air-conditioning system for operation in below 40F water
- Refrigerant type is accepted worldwide under the Montreal Protocols
- Cruisair remote and self-contained air conditioner with ECU controls (Reverse Cycle) capable for operating down to 40F

AC/DC SYSTEM:

- AC outlets throughout
- Octoplex system with AC/DC distribution panels in Pilothouse & Crew
- All primary AC&DC electrical wiring is appropriately labeled throughout the yacht
- GFI (110V) AC outlet
- 24-Volt system
- Engine batter isolation switches
- AGM Batteries with 40F to 140F operating temp and industry leading low self-discharge rates 1- 3%
- Octoplex NEMA 2000 electrical control system. Based on military technology for remote activation, control and status reporting of all AC and DC breakers. Monitors all power sources (AC and DC) for voltage, frequency and amperage abnormalities and provide visual and audio amperage abnormalities and provide visual and audio alerts. Includes enhanced circuit breaker functionality with no-load indication, dimming and usage information with touch screen monitors that are user reconfigurable. Brown-out configurable control through auto load shedding is included where operator designated equipment (e.g. navigation and other essential systems) remains powered-on while automatically switching other systems off
- Octoplex NEMA 2000 Vessel System monitor system. Provides main access doors, tank level, bilge level and battery monitoring of current, voltage and temp.

SHORE POWER CONNECTER:

- Shore power receptacle 100+50AMP in transom with 115' cable master

BONDING SYSTEM:

- Bonding system throughout
- The vessel's bonding and grounding systems shall include copper straps secured to the hull and running the full length of the vessel parallel to centerline. Engines, generators, metallic through hulls, strainers and pump bodies shall be connected to the bonding strap using 8 AWG wire minimum or equivalent
- Octoplex system with AC/DC distribution panels in Pilothouse & Crew & Flybridge
- Additional Octoplex screen in FB/MSR/PH/CREW
- Convenience lights, lower deck and Flybridge
- Dimmers for Salon and Master Stateroom sconces
- International navigation lights

LIGHTING:

- Flexible ribbon LED strip throughout
- Sconces (MSR; Boyd 9893(2) 2 guest cabins; Boyd 10028(2), heads; Boyd 10138(8), Salon; lighting designs 700WSHUD2WS(2)
- 24V lights in all compartments
- 24V LED lights (Aerospace quality, specially tuned color temperature for Ocean Alexander)
- AC/DC lights with anti-explosion type in engine room

CHARGER:

- Victron 60AMP Charger
- Victron battery charger (engine: 24V/50A, genset: 12V.25A)

OTHER:

- Marine-grade, tinned copper wiring
- Phone system with jacks in Master Stateroom, Salon & Pilothouse
- Vimar switches and outlets
- Ritchie compass 5"
- Furuno Navigation Package Integrated with NMEA2000 (full package)
- Electric barbeque on Flybridge
- Electric sunroof on hardtop

- Underwater lights (three)
- ACR Searchlight
- Spreader lights
- Phone system
- N2KVIEW system with iPad
- Isoboost Package (50AMP + 100AMP)
- Additional Flybridge Stidd mechanical helm seat (total of three)

Exclusions

Tender not included.

Исключения

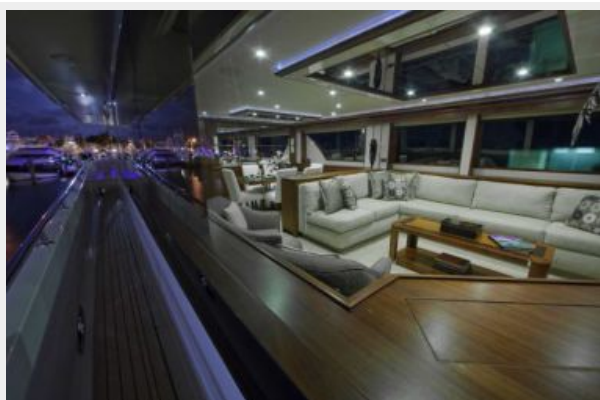
При продаже яхты исключаются личные вещи владельца.

Отказ от ответственности

Компания предоставляет описание судна или яхты добросовестно, но не может гарантировать точность этой информации, а также не ручается за техническое состояние. Покупатель должен проинструктировать своих агентов или оценщиков исследовать представленную информацию более подробно, по собственному желанию. Продажа судна или яхты, изменение цены или снятие с продажи будет происходить без предварительного уведомления.

ФОТОГРАФИИ

Salon - Side View



Salon - Side View



Salon



Salon Bar



Formal Dining



Galley



Galley



Galley / Pilothouse



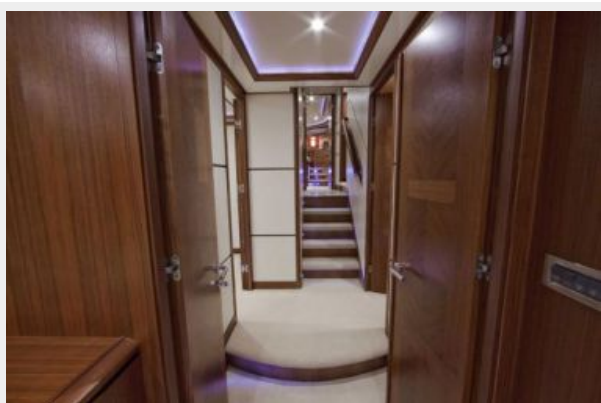
Pilothouse



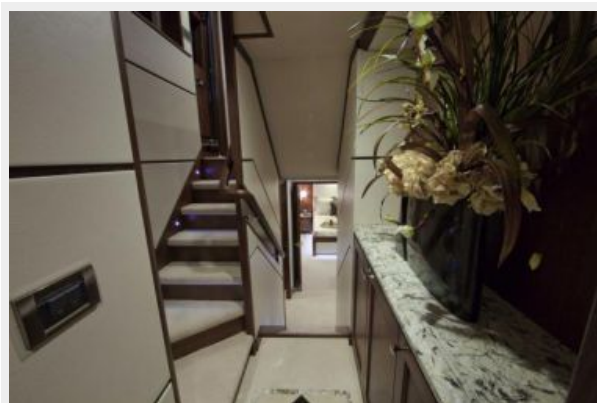
Pilothouse Dinette



Companionway to Staterooms



Companionway to Master Stateroom



Master Stateroom



Master Stateroom



Master Head



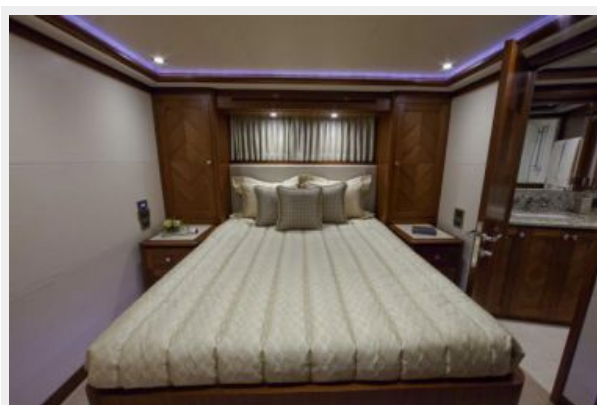
Master Head



Master Head



VIP Stateroom - 1



VIP Stateroom - 1



VIP Head



Laundry



VIP Stateroom - 2



VIP Stateroom - 2



VIP Stateroom - 2 Head



Crew Quarters



Crew Cabin



Crew Head



Lazarette



Flybridge



Flybridge



Flybridge Helm



Flybridge Helm



Flybridge Seating



Flybridge Bar



Sun Lounge



Boat Deck - Tender not Included



КОНТАКТЫ

Андрей Шестаков (Andrey Shestakov) – ведущий яхтенный брокер отдела продаж яхт и судов компании Shestakov Yacht Sales Inc. Официальный представитель Shestakov Yacht Sales Inc. для русскоговорящих клиентов в центральном офисе компании в Майами/Форт Лодердейл/Флорида/США.

Контактная информация

Email: andrey@shestakovyachtsales.com

Web: shestakovyachtsales.com

Телефоны

Краснодарский край: **+7(918)465-66-44**

США, Майами, Флорида: **+1(954)274-4435**

Время работы

Понедельник – Суббота: **9:00 - 21:00**
EDT

Воскресенье: **Закрито**

Адрес



Harbour Towne Marina, 850 NE 3rd St,
STE 213, Dania, FL 33004