

NEVER SAY NEVER — SUNSEEKER



Builder: SUNSEEKER

Year Built: 2011

Model: Mega Yacht

Price: PRICE ON APPLICATION

Location: France

LOA: 126' 0" (38.40m)

Beam: 26' 7" (8.10m)

Min Draft: 4' 11" (1.50m)

Max Draft: 8' 9" (2.67m)

Cruise Speed: 16 Kts. (18 MPH)

Max Speed: 25 Kts. (29 MPH)

Our experienced yacht broker, Andrey Shestakov, will help you choose and buy a yacht that best suits your needs **Never Say Never — SUNSEEKER** from our catalogue. Presently, at Shestakov Yacht Sales Inc., we have a wide variety of yachts available on our sale's list. We also work in close contact with all the big yacht manufacturers from all over the world.

If you would like to buy a yacht **Never Say Never — SUNSEEKER** or would like help answering any questions concerning purchasing, selling or chartering a yacht, please call **+1(954)274-4435**

TABLE OF CONTENTS

TABLE OF CONTENTS	2
SPECIFICATIONS	3
Overview	3
Basic Information	4
Dimensions	5
Speed, Capacities and Weight	5
Accommodations	5
Hull and Deck Information	6
Engine Information	6
PHOTOS	7
CONTACTS	12
Contact details	12
Telephones	12
Office hours	12
Address	12

SPECIFICATIONS

Overview

List Of Special Features in addition to all the upgrade lists.

Ken Frievokh designed interior (\$1.5million)

Full Sunseeker warranty extended until April 15th 2014

Extended MTU warranty until 4000 hours or July 31, 2016

Ten year Coppercote osmosis and antifoul protection

Upgraded at anchor stabilizers, 2013, increased size

Upgraded bow thruster to a “real” 120hp, 2013

Entire electrical system converted to 50hz in 2013, so all motors, pumps and appliances new (\$1million)

Engine room ventilation upgraded 2013 to 16V4000 specifications

Hull painted with Dupont 2013

MTU engine preheaters

Trolling valves

Customised and modified launching system for tender and PWC's

(2) Balconies amidships in salon

Extra refrigeration in main galley

Extra refrigeration outside

Additional storage capacities everywhere to utilize every space

Modified hard top and system of removable Isinglass screens enable all weather use of the flybridge

Aft deck tent shade with carbon fibre poles

Harken track for cleaning owners stateroom windows

Custom rise and fall and extendable teak dining tables on flybridge

Matching covers for all exterior seating, tables and bars

Yachts engineer was a Sunseeker employee of ten years standing and was involved in the build

Basic Information

Category: Mega Yacht

Model Year: 2011

Year Built: 2011

Refit Year: 2013

Refit Type: Interiors

Country: France

Registration #: 743599

Vessel Top: Hardtop

Fly Bridge: Yes

Cockpit: Yes

Dimensions

LOA: 126' 0" (38.40m)**LWL:** 101' 6" (30.94m)**LOD:** 128' 4" (39.12m)**Beam:** 26' 7" (8.10m)**Min Draft:** 4' 11" (1.50m)**Max Draft:** 8' 9" (2.67m)**Clearance:** 43' 6" (13.26m)

Speed, Capacities and Weight

Cruise Speed: 16 Kts. (18 MPH)**Cruise Speed RPM:** 1500 Kts.**Cruise Speed Range:** 750**Max Speed:** 25 Kts. (29 MPH)**Max Speed RPM:** 2100 Kts.**Max Speed Range:** 500 Kts.**Gross Tonnage:** 286 Pounds**Water Capacity:** 1307 Gallons**Holding Tank:** 1108 Gallons**Fuel Capacity:** 7585 Gallons

Accommodations

Total Cabins: 5**Total Berths:** 5**Sleeps:** 10**Total Heads:** 6**Captain Cabin:** True**Crew Cabin:** 3**Crew Berths:** 7**Crew Sleeps:** 7**Crew Heads:** 2

Hull and Deck Information

Hull Material: GRP

Deck Material: Teak

Hull Color: Blue

Hull Finish: Stainless Steel

Hull Designer: Sunseeker Design

Exterior Designer: Don Shead

Interior Designer: Ken Freivokh Studio
Design

Engine Information

Engines: 2

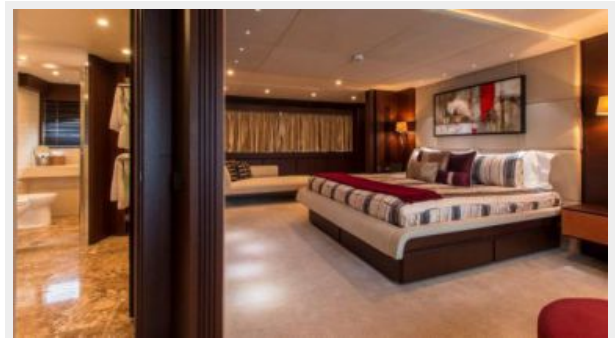
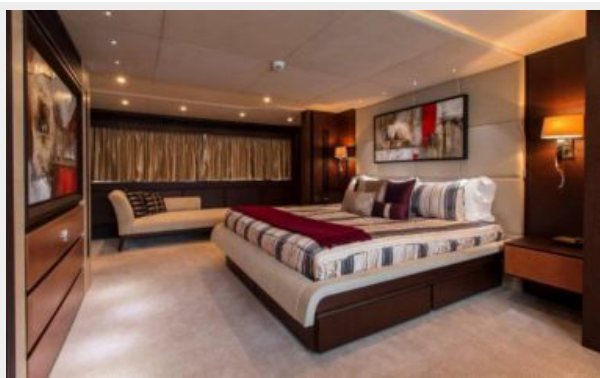
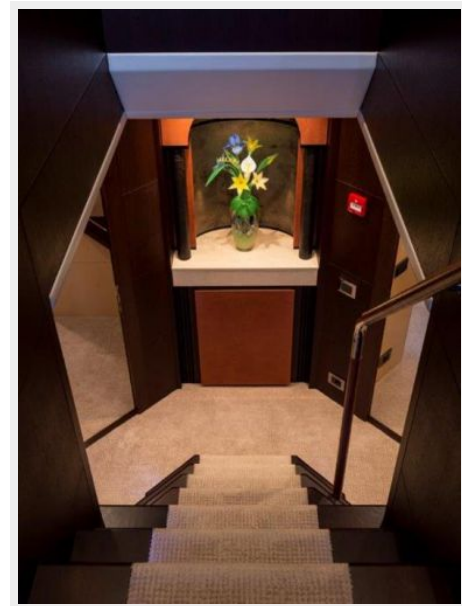
Manufacturer: MTU

Model: 12V 4000 M93L

Engine Type: Other

Fuel Type: Diesel

PHOTOS











CONTACTS

Andrey Shestakov, leading yacht broker of the sales department of Shestakov Yacht Sales Inc. Shestakov Yacht Sales Inc., the official representative of the Miami/Fort Lauderdale FL headquarters.

Contact details

Email: andrey@shestakovyachtsales.com

Web: shestakovyachtsales.com/en/

Telephones

USA: +1(954)274-4435

Office hours

Monday – Saturday: **9:00 - 21:00** EDT

Sunday: **closed**

Address



Harbour Towne Marina, 850 NE 3rd St,
STE 213, Dania, FL 33004