

37FT 2005 NORDIC TUGS 37 — NORDIC TUGS



Builder: NORDIC TUGS

Year Built: 2005

Model: Trawler

Price: PRICE ON APPLICATION

Location: United States

LOA: 37' 0" (11.28m)

Beam: 12' 11" (3.94m)

Max Draft: 4' 0" (1.22m)

Cruise Speed: 9 Kts. (10 MPH)

Max Speed: 15 Kts. (17 MPH)

Our experienced yacht broker, Andrey Shestakov, will help you choose and buy a yacht that best suits your needs 37ft 2005 Nordic Tugs 37 — NORDIC TUGS from our catalogue. Presently, at Shestakov Yacht Sales Inc., we have a wide variety of yachts available on our sale's list. We also work in close contact with all the big yacht manufacturers from all over the world.

If you would like to buy a yacht 37ft 2005 Nordic Tugs 37 — NORDIC TUGS or would like help answering any questions concerning purchasing, selling or chartering a yacht, please call +1(954)274-4435

TABLE OF CONTENTS

TABLE OF CONTENTS	2
SPECIFICATIONS	5
Basic Information	5
Dimensions	5
Speed, Capacities and Weight	5
Hull and Deck Information	5
Engine Information	5
DETAILED INFORMATION	6
Dimensions & Specs	6
Accomodations and Walk Through	6
Galley	8
ELECTRICAL AND ELECTRONICS	9
Mechanical	9
Hull and Deck	10
Flybridge	11
Manufacturer Provided Description	11
EXCLUSIONS	12
Exclusions	12
Disclaimer	12
PHOTOS	13
Manufacturer Provided Image	13
Galley	13
Salon	13
Salon- Forward View	13
Salon - Aft view	13
Galley-2	13
Helm - Pilot House	14
Helm	14

Helm Instruments	14
Pilot House - Companion Seat	14
Master	14
Forward to State Rooms	14
Master-2 -Storage Starbd Side	15
Master-3,, Storage - Port Side	15
Head - refinished	15
Guest stateroom/office	15
New Splendide washer/dryer	15
Guest stateroom-2	15
Engine Room	16
Engine	16
Generator	16
Forward View	16
Folding radar mast	17
Covered Cockpit	17
Upper Helm - Instruments Open	17
Upper - Helm - Instruments - Closed	17
Forward Pilot House Windows	17
Fore Deck	17
Manufacturer Provided Image: Double Cabin Layout	18
Manufacturer Provided Image	18
New Bottom Paint - Running Gear	18
New Bottom Paint - & Hull Detailing	18
CONTACTS	19
Contact details	19
Telephones	19
Office hours	19
Address	19

SPECIFICATIONS

Basic Information

Category: Trawler

Model Year: 2005

Year Built: 2005

Country: United States

Dimensions

LOA: 37' 0" (11.28m)

LWL: 37' 8" (11.48m)

Beam: 12' 11" (3.94m)

Max Draft: 4' 0" (1.22m)

MFG Length: 39' 2" (11.94m)

Speed, Capacities and Weight

Cruise Speed: 9 Kts. (10 MPH)

Max Speed: 15 Kts. (17 MPH)

Displacement: 22000 Pounds

Water Capacity: 150 Gallons

Holding Tank: 40 Gallons

Fuel Capacity: 350 Gallons

Hull and Deck Information

Hull Material: Fiberglass

Engine Information

Engines: 1

Manufacturer: Cummings

Model: 6BTA5.9

Engine Type: Inboard

Fuel Type: Diesel

DETAILED INFORMATION

Dimensions & Specs

LOA.....39' 2"11.94 meters

Waterline Length ... 37' 8" 11.48 meters

Beam..... 12' 11" 3.94 meters

Draft4' 1,22 meters

Displacement..... 22,000 lbs 9,979 kg

Engine : Cummins 6BTA5.9 330 HP (1,620 hours)

Generator: ONAN 6.5 KW- (1,070 hours)

Fuel350 gal 1,324,9 liters (in 2 tanks)

Water 150 gal 682 liters

Holding .. 40 gal 182 liters

Headroom ... 6' 7" 2.1 meters

Cruise at...8.5 kts....1600 RPM

Max Speed.. 15 kts .. 2650 RPM

Accomodations and Walk Through

Sleeps a total of 6 guests in (2) private double staterooms and 2 additional guests in the Salon

FULLY AIR CONDITIONED - (3) separate units

She has a large covered cockpit aft with an opening transom door providing access to the swim platform. There is also a stairway leading to the upper deck.

Entering the saloon from the spacious cockpit, the galley is to starboard and the convertible settee and table are to port, just forward of a roomy hanging/storage locker. There is stowage behind the settee back below the side deck for life jackets, bedding, etc. A large hatch in the middle of the saloon provides access to the "tank room" below. There is voluminous stowage behind the forward leg of the settee and two stowage lockers below the longer leg of the settee.

Moving forward, a couple of steps lead to the expansive pilothouse with equal seating for two on both sides. Port companion seat has large stowage lockers below. The portside seat is set slightly aft to provide additional room for navigator at the nav desk. Helm is to starboard, full size nav desk with chart drawer is to port. There are sliding doors Port & Strbd with hinged steps over roomy lockers. Access to the spectacular engine room is via double hatches in the middle of the pilothouse sole. Overhead is a teak console displaying instruments, and radio sets. The Main AC Breaker panel, and Genset panel is located on the port side of the helm seat along with the AC panel breakers for shore power and generator selection, There are also switches for the battery cutoffs for the house and engine start. These panels are easily accessible to the right side as you go forward to the staterooms. The Main DC panel with breakers is located to the right side of the helm. Three windshield panes have individual defrosters and Variable speed parallel arm wipers

. Moving forward, down to the Stateroom accommodations, at the foot of the steps is a hatch to the mid-ship bilge. To port is the guest stateroom. Opposite is the very efficient head with shower enclosure, VacuFlush head, vanity, towel bars, etc., and excellent access to the back-side of the main electrical panels and the underside of the helm. Forward is the owner's Stateroom. A chain locker is accessible through teak door on fwd bulkhead.

FORWARD STATE ROOM:

Large Island Queen-Berth with pull out drawers - additional storage under berth

Side storage locker, and 2 hanging lockers

Opening side ports and overhead hatch

GUEST STATEROOM:

Modified to serve as office, den, or guest room

single/double berth

Hanging locker

Opening side port

Reading lights

HEAD:

Full head with shower

New marble vessel sink w/glass tile counter-top and back splash

SALON:

Suede leather seating (Salon and Pilot House)

L-shaped Settee (converts to double berth)

Galley

Opening hatch to tank room

Large opening glass windows

Opening glass door to aft deck

PILOT HOUSE:

Helm w/seating for 2

Companion seating for 2

Port and Starbd side doors

Variable speed wipers on forward windows

Chart table and drawer

Storage under seats

Electric panels

Galley

The spacious galley offers over 10' of counter space, Special Corion counter top - 30 cubic feet of stowage pantry, dish locker, cutting board, etc. Teak doors and drawers fill the facade. - The Galley is bright and airy with large windows along the full length of the boat. It is conveniently located along the Starbd length of the Salon, with easy access to the aft deck

2 separate Nova Cool refrigerator and freezer units

Large Single Porcelain sink with pull out faucet

Propane 3 burner stove w/oven - Force 10

Sharp Microwave oven

150 gal fresh water tank

12v DC pressure water pump

Hot water heater - 9 gal Force-10

ELECTRICAL AND ELECTRONICS

ELECTRONICS:

LOWER HELM:

GPS/Radar -Raymarine C-120

Autopilot - Raymarine ST 7001

Ramarine tri-datsa (speed, depth, log)

VHF radio

Flow Scan fuel monitor

Bow and stern thruster controls w/remote

Danforth compass

Engine gages -Oil - Temp -Charge Voltage

Kenwood stereo w/ Bose speakers

FLYBRIDGE HELM:

Pop-up instrument panels

Autopilot - Raymatine ST-7001 control head

GPS/Radar - Raymarine C-120

Windlass remote control

Danforth Compass

VHF - Ram Mic

Bow and Stern Thruster control

Engine Gages - Oil - Voltage - Temp

Mechanical

The Engine Room has easy access through 2 large opening hatches in the Pilot House floor. Engine and filters are easy to access, and Generator is also accessible. Generator has a sound shield enclosure for quiet operation. A third opening hatch is located in the Salon and allows access to the fuel tanks, and other areas of the bilge. Fuel tanks each have sight gages for

accurate fuel levels.

SERVICE RECORDS AVAILABLE

Cummins 6BTA5.9 diesel engine - 330 HP (1,620 hours)

Single Lever ZF controls

Generator - Onan 6.5 KW (1,070 hours)

Fire suppression system in engine room

(2) Fuel tanks w/fuel transfer system

Fuel polishing system

Dripless shaft seal

Bow thruster (completely rebuilt 2012)

Stern Thruster - with all systems ,separate battery & charge - New 2013 (cost \$13,000)

(3) Airconditioning compressors and air handlers (2) systems serve the Salon and pilot house, 1 system serves the staterooms forward - With reverse cycle heat

New Salon Air cond compressor (Dec. 2012)

Splendide washer - dryer w/vent option - New 2013

Hull and Deck

This vessel has the Nordic off white hull which holds her new factory appearance and eliminates the potential of fading with the colored hulls. She has wide side decks and large forward deck that is protected by a high bulwark and rail. Access to the side decks is through the pilot house doors Port and Starbd. There is also access to the aft cockpit from either the two side decks or door in the Salon.

The cockpit is quite spacious and protected by an overhead extension of teh upper deck. An opening transom door allows access to the swim platform, and a folding ladder allows for easily entering from the water.

HULL:

Over sized rudder - fully protected by keel extending below the hull

Upper and lower rub rails

Forward, Aft, Mid-ship cleats - Sampson post forward

Windlass -Lofrans Tigres

Anchors - new Ultra anchor (at cost of \$2,000) w/ 200 ft chain

Delta w/200 ft chain

Fortress w/ chain and nylon rode

Swim Platform

Opening transom door in cockpit

Cockpit shower

Opening overhead hatch in owner's cabin

Hinged radar mast (easily lowers to clear bridges - 16 ft)

3 froward windows in Pilot house with individual windshield wipers

Upper deck with Protective railing

Bottom painted 3/2013

Flybridge

A ladder leads up to the upper deck and flybridge through a large opening hatch. . This upper deck provides ample storage for a tender, with a lifting davit, and seating. There is excellent visibility from the flybridge, and a full Bimini top over the helm area.

BRIDGE DECK:

Flybridge controls, full electronics, and seating

Bimini Top

Tender storage area with davit

Protective railing

Manufacturer Provided Description

The Nordic Tug 37 is available with or without a flybridge and in two configurations, the twin stateroom layout that has become so popular and the convertible layout, which allows the customer to choose a 2nd head, laundry room or study. With a fuel-efficient Cummins electronically controlled diesel engine, she can reach speeds in excess of 15 knots, yet is economical enough to cruise over 1,000 nautical miles while burning less than 3 gallons per

hour. The 37 gives customers an option for a boat with accommodations similar to that of the 42 in a smaller and more economical package. Designed by Lynn Senour, the originator of the Nordic Tug design, the 37 shares many of the features found in her larger and smaller siblings such as a large ship-style wheelhouse, access to the deck from either side, hand-laid fiberglass hull with hard chine and full keel as well as the same attributes of speed and sea keeping qualities. The waterline length of the 37 is actually 39' 10" due to a molded-in swim step that is essentially an extension of the hull giving her greater speed, stability and fuel economy.

EXCLUSIONS

Owner's personal effects

Tender and outboard

Exclusions

Owner's personal belongings.

Disclaimer

The Company offers the details of this vessel or yacht in good faith but cannot guarantee or warrant the accuracy of this information nor warrant the condition of the vessel. A buyer should instruct his representatives, agents, or his surveyors, to investigate such details as the buyer desires validated. This vessel or yacht is offered subject to prior sale, price change, or withdrawal without notice.

PHOTOS

Manufacturer Provided Image



Galley



Salon



Salon- Forward View



Salon - Aft view



Galley-2



Helm - Pilot House



Helm



Helm Instruments



Pilot House - Companion Seat



Forward to State Rooms



Master



Master-2 -Storage Starbd Side



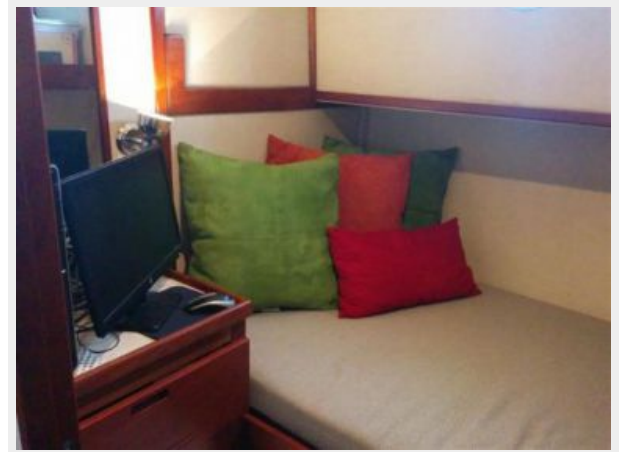
Master-3,, Storage - Port Side



Head - refinished



Guest stateroom/office



Guest stateroom-2



New Splendide washer/dryer



Engine Room



Engine



Generator



Forward View



Covered Cockpit



Folding radar mast



Upper Helm - Instruments Open



Upper - Helm - Instruments - Closed



Forward Pilot House Windows



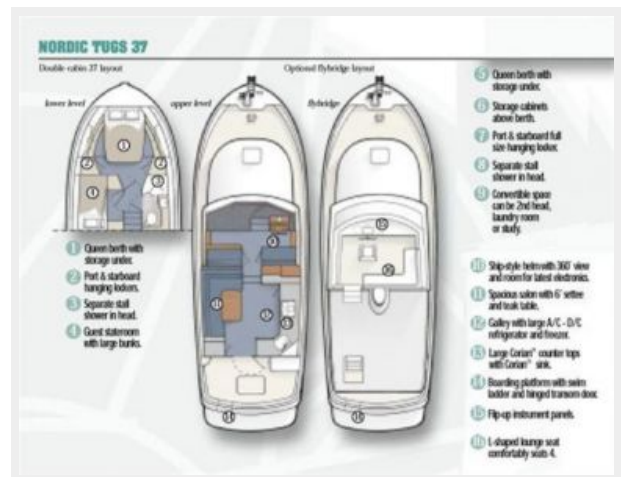
Fore Deck



Manufacturer Provided Image



Manufacturer Provided Image: Double Cabin Layout



New Bottom Paint - Running Gear



New Bottom Paint - & Hull Detailing



CONTACTS

Andrey Shestakov, leading yacht broker of the sales department of Shestakov Yacht Sales Inc. Shestakov Yacht Sales Inc., the official representative of the Miami/Fort Lauderdale FL headquarters.

Contact details

Email: andrey@shestakovyachtsales.com

Web: shestakovyachtsales.com/en/

Telephones

USA: +1(954)274-4435

Office hours

Monday – Saturday: **9:00 - 21:00** EDT

Sunday: **closed**

Address



Harbour Towne Marina, 850 NE 3rd St,
STE 213, Dania, FL 33004