

ALI — VICEM



Builder: VICEM

Year Built: 2011

Model: Motor Yacht

Price: PRICE ON APPLICATION

Location: United States

LOA: 80' 4" (24.49m)

Beam: 27' 0" (8.23m)

Max Draft: 5' 8" (1.73m)

Cruise Speed: 22 Kts. (25 MPH)

Max Speed: 28 Kts. (32 MPH)

Our experienced yacht broker, Andrey Shestakov, will help you choose and buy a yacht that best suits your needs **ALI — VICEM** from our catalogue. Presently, at Shestakov Yacht Sales Inc., we have a wide variety of yachts available on our sale's list. We also work in close contact with all the big yacht manufacturers from all over the world.

If you would like to buy a yacht **ALI — VICEM** or would like help answering any questions concerning purchasing, selling or chartering a yacht, please call **+1(954)274-4435**

TABLE OF CONTENTS

TABLE OF CONTENTS	2
SPECIFICATIONS	4
Overview	4
Basic Information	4
Dimensions	4
Speed, Capacities and Weight	4
Accommodations	5
Hull and Deck Information	5
Engine Information	5
DETAILED INFORMATION	6
Overview	6
Salon	6
Galley	6
Interior Cabins	7
Fuel/FreshWater/Black/Grey Water System	8
Deck Equipment	8
Throttle Control System	9
Electronics and Navigation	9
Audio & Visual Equipment	9
Deck and Exterior	10
Safety & Fire Protection	10
Electrical System	10
Propulsion and Steering System	11
A/C System	11
Exclusions	11
Disclaimer	12
PHOTOS	13
CONTACTS	17

Contact details	17
Telephones	17
Office hours	17
Address	17

SPECIFICATIONS

Overview

M/Y ALI a Vicem 80' Flybridge Classic is an enlarged version of the popular 77' Classic. The extra length allows a fourth cabin or a larger galley, or a settee.

A Modern Classic - the Vicem 80' Flybridge Classic Cruiser is handcrafted from the finest materials available to be the best in its class and size range. This yacht has a handsome classic look and provides a quiet, dry ride because of Vicem's superior design and construction technique.

A dedication - some say an obsession - to be second to none. Come learn to experience what our valued clients have come to know.

Basic Information

Category: Motor Yacht

Model Year: 2011

Year Built: 2011

Country: United States

Fly Bridge: Yes

Cockpit: Yes

Dimensions

LOA: 80' 4" (24.49m)

LWL: 71' 9" (21.87m)

Beam: 27' 0" (8.23m)

Max Draft: 5' 8" (1.73m)

Speed, Capacities and Weight

Cruise Speed: 22 Kts. (25 MPH)

Max Speed: 28 Kts. (32 MPH)

Gross Tonnage: 51 Pounds

Water Capacity: 315 Gallons

Holding Tank: 283 Gallons

Fuel Capacity: 1666 Gallons

Accommodations

Total Cabins: 4

Hull and Deck Information

Hull Material: Composite

Hull Configuration: Planing

Engine Information

Engines: 2

Manufacturer: MAN

Model: 1550 hp

Engine Type: Inboard

Fuel Type: Diesel

DETAILED INFORMATION

Overview

The Vicem 80' Flybridge Classic is an enlarged version of the popular 77' Classic. The extra length allows a fourth cabin or a larger galley, or a settee.

A Modern Classic - the Vicem 80' Flybridge Classic Cruiser is handcrafted from the finest materials available to be the best in its class and size range. This yacht has a handsome classic look and provides a quiet, dry ride.

Salon

The Vicem 80' Flybridge is notable for her twin built-in couches, perfect for entertaining around her large "high/low" dining table. Easy and safe access is provided to her wide side decks, with a full stainless steel rail system. The aft deck and side decks both have teak decking. To port in the Salon is a double wide navigator's seat with ample storage (under the seat is a concealed icemaker). On the starboard side is the lower helm station, with a helm door for easy access to the wide side decks. There is a hidden 36" LCD TV with a lift mechanism in a custom cabinet.

All of the woodwork in the salon and interior cabins is Anegree with a high gloss finish and many raised panel cabinet doors.

Galley

From the Salon it is four graceful steps down to the open galley, with its cathedral ceiling open to the windshield above. There is ample storage for all cookware, and all drawers have the desirable soft close feature. Large windows at counter height provide extra natural lighting, and the galley island also serves as a sea brace when underway. A washer/dryer combo unit is mounted under the companionway stairs.

- Dishwasher - Bosch
- Electric stove, quad burner - Bosch
- Sub zero freezer full size
- Galley sinks - Franke
- Microwave, counter top convection - GE
- Gaggenau electric grill

- Refrigerator combo with icemaker CO 1175 - U-line
- Refrigerator CR65-Indel
- Vent hood, slide out - Bosch
- Washer and vented dryer - Splendid

Interior Cabins

The Master Cabin is starboard of the galley, in the quiet mid-ship area. It has a King-sized bed (walk around) with drawers underneath. The master cabin has a large 26" LCD TV. Forward of the berth is the master head with granite counters. The marble tile work in the shower is simply spectacular, photos do not do it justice.

Starboard and Port guest cabins: Moving forward, we find twin bed lower guest cabin to port, and a similar sized cabin to starboard. Both of these share a head on the starboard side. These cabins have their own entertainment systems and a 15" LCD TV with a private cable TV receiver in each. Forward of this cabin is the VIP cabin with an en-suite head and shower. This VIP cabin is large and airy, containing a Queen size berth with four large pull out drawers under. There is a small desk aft. This cabin also has a 26" LCD TV.

- Bathroom accessories, brush, paper holder, towel rack, bathrobe hanger
- Ceiling panels, fabric overhead panels
- Concealed sky screens - Ocean-Air
- Curtains, cushions, coaches, berth covers and berth sheets
- Dining table
- Door stoppers
- Faucets - HansGrohe
- Fiddles, stainless steel
- Floors, Wenge wood and carpet
- Galley sinks and accessories - Franke
- Galley, bar, flybridge and bathroom counter tops, granite
- Interior, Anegree, satin finish - Custom
- Mirrors in cabins
- Marble counters and floor tile in heads
- Mosaic tiles in all showers
- Push buttons and cabin locks - Foresti Suardi
- Sinks - Barka
- Special shelf systems in galley, - Rev-a Shelf
- Table with gas stands - Besenzoni
- Blinds on main windows
- Corian counter top
- Genuine leather upholstery for salon and helm seat
- Wine cooler

Fuel/FreshWater/Black/Grey Water System

- Bilge Pump, manual - Jabsco
- Bilge pumps - Rule
- Cockpit shower - Heater Craft
- Deck plates - Riccii
- Electric heads - Tecma
- Faucets - Hansgrohe
- Fresh water pressure pump, twin 24 VDC/115 VAC - CEM MG - INOX
- Fresh water tanks, 204 Stainless steel - custom made
- Fuel filters, dual - Separ
- Fuel tanks, 316 L Stainless Steel - custom made
- Grey and black water tanks, H.D. Polietilen
- Grey water discharge pump - Rule
- Macerator pumps - Sealand
- Odorless pipes - Geberit
- Sea water pumps, anchor - Parmax
- Shower systems - HasnGrohe
- Tank displays - Wema
- Tank level indicators Stainless steel - Hizmar
- Water heater, twin - Isotherm Basic 50
- Water maker, Aqua Whisper 900 with filter upgrade - Sea Recovery
- Water outlet fitting - Jabsco
- Water pressure regulator - Watts

Deck Equipment

- Air horn system - Buell
- Capstan, twin - Lofrans T1500
- CCTV cameras - Raymarine
- Hatches - Bomar
- Navigational lights - Aqua Signal
- Port Lights - Schmitt
- Search light - Jabsco/ITT
- Underwater camera - Ocean Systems
- Underwater lights, twin - Deep Sea
- Windshield wipers - Exalto
- Anchor, Stainless Steel
- Chain, galvanized

- Nylon ropes, 6 sets and 12 fenders
- Windlass, electric - Lofrans X4/2500W

Throttle Control System

Electronic engine controls, dual station, ZF MC2000-2

Electronics and Navigation

- Autopilot control heads, twin - Raymarine
- Compass, twin magnetic black and white - Ritchie
- Displays, E120, triple - Raymarine
- GPS Receiver, RayStar 125 - Raymarine
- Radar Scanner, 4 kw, open array - Raymarine
- Satellite TV antenna 60 STV Raymarine
- Tridata, twin ST60 - Raymarine
- VHF Antenna and brackets - Glomex
- VHF Ray240 with second station - Raymarine
- Watch set, clock, tide clock, barometer - Barigo
- Wind analogue, twin ST60 - Raymarine
- Wind transducer

Audio & Visual Equipment

- CD and DVD players, quad - Sony
- Music system - Bose 48 Lifestyle
- Radio-CD players, quad - Clarion
- Receivers, six - Direct TV
- Speakers - Bose
- Speakers for exterior and interior - Clarion
- Stereo amplifiers SA-3 additional zone - Bose Lifestyle
- Television, 15" in Starboard and Port cabins - Sharp
- Television, 26" in dinette, Master and VIP cabins - Sharp
- Television, 32" in salon - Sharp
- Satellite Telephone
- Satellite TV antenna

Deck and Exterior

- Bow rail, Stainless Steel - Custom
- Aft Deck and Flybridge floors, teak
- Aft Deck area table with hydraulic stands
- Exterior upholstery - SUNBRELLA
- Flybridge area table with hydraulic stands
- Flybridge with fully equipped helm station
- Helm chair, double - STIDD
- Lazarette and bilge ladders, Stainless Steel
- Platform lift, hydraulic - Opacmare
- Side and forward decks, teak
- Side Door
- Sun cushions - SUNBRELLA
- Swim platform ladder
- Swim platform, teak
- Waterproof cover for all windows and doors on the deck
- Dacron aft deck cover

Safety & Fire Protection

- Engine Room, lazarette and forward bilge blowers - CEM and Jabsco
- Fire extinguisher, manual-automatic - Fireboy - in engine room

Electrical System

- AGM batteries, marine grade
- Battery isolator
- Cable master, twin, inlet 50 amp with 75 ft. cable - Glendening
- Cathode protection zino for hull and rudder Technoseal
- Converter, battery charger - Mastervolt
- Courtesy and step lights - Cantalupi
- Dimmers on ceiling lights
- Electric panel, rosewood - Custom
- Electrical mirrors in heads
- Engine room lights
- Generator, 13.5 kW @60hz - Onan Gen-set

- Generator, 27.5 kW @60hz - Onan Gen-set
- GFCI sockets in heads and galleys - Berker
- Grounding plate - Guest Dynaplate
- Interior and exterior lights - Cantalupi
- Inverter - Mastervolt - 5000 watts
- Isolator, galvanic - Failsafe
- Reading lights - Custom
- Rope lights
- Shore TV-Phone inlet - Hubbell
- Sockets and switches, 220 V/110 V - Berker
- Flybridge Grill

Propulsion and Steering System

- Main Engine, twin 1550 hp. common rail diesel engines - MAN
- Bow thruster, electric dual joystick - Side Power
- Engine room lead panel isolation
- Gear boxes, marine, 2050A - ZF
- Oil change pump - Reverso
- Propellers
- Remote control system, twin engines, bow and stern thrusters - Yacht Controller
- Rudders and P brackets, Stainless Steel
- Sea water strainer - Guidi
- Shafts, 316S Stainless Steel
- Stabilizer 250 system - Trac
- Steering system, dual station power-assisted hydraulic - BCS
- Steering wheel, teak and chrome
- Stern thruster, Electric - Side Power - 10.7 hp.
- Stuffing box - Tides Marine
- Trim tabs, BCS MY 4000 System
- Dual fuel filters

A/C System

Cruisair, chilled water air conditioning, 108,000 BTU

Exclusions

Owner's personal belongings.

Disclaimer

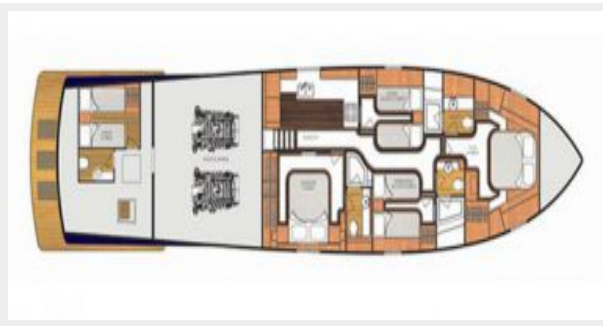
The Company offers the details of this vessel or yacht in good faith but cannot guarantee or warrant the accuracy of this information nor warrant the condition of the vessel. A buyer should instruct his representatives, agents, or his surveyors, to investigate such details as the buyer desires validated. This vessel or yacht is offered subject to prior sale, price change, or withdrawal without notice.

PHOTOS









CONTACTS

Andrey Shestakov, leading yacht broker of the sales department of Shestakov Yacht Sales Inc. Shestakov Yacht Sales Inc., the official representative of the Miami/Fort Lauderdale FL headquarters.

Contact details

Email: andrey@shestakovyachtsales.com

Web: shestakovyachtsales.com/en/

Telephones

USA: +1(954)274-4435

Office hours

Monday – Saturday: **9:00 - 21:00** EDT

Sunday: **closed**

Address



Harbour Towne Marina, 850 NE 3rd St,
STE 213, Dania, FL 33004