

33FT 2008 FOUR WINNS 318 VISTA — FOUR WINNS



Builder: FOUR WINNS

Year Built: 2008

Model: Cruiser

Price: PRICE ON APPLICATION

Location: United States

LOA: 33' 0" (10.06m)

Beam: 10' 9" (3.28m)

Min Draft: 2' 2" (0.66m)

Max Draft: 3' 2" (0.97m)

Our experienced yacht broker, Andrey Shestakov, will help you choose and buy a yacht that best suits your needs 33ft 2008 Four Winns 318 Vista — FOUR WINNS from our catalogue. Presently, at Shestakov Yacht Sales Inc., we have a wide variety of yachts available on our sale's list. We also work in close contact with all the big yacht manufacturers from all over the world.

If you would like to buy a yacht 33ft 2008 Four Winns 318 Vista — FOUR WINNS or would like help answering any questions concerning purchasing, selling or chartering a yacht, please call +1(954)274-4435

TABLE OF CONTENTS

TABLE OF CONTENTS	2
SPECIFICATIONS	5
Basic Information	5
Dimensions	5
Speed, Capacities and Weight	5
Accommodations	5
Hull and Deck Information	5
Engine Information	6
DETAILED INFORMATION	7
Engines	7
Tankage	7
Galley	7
Features	7
Exclusions	7
Disclaimer	8
PHOTOS	9
Starboard profile	9
Starboard profile	9
Port profile	9
Starboard bow	9
Port view of bow	9
Port view of bow	9
Bow view from Helm	10
Windshield cover	10
Windshield	10
Arch with speakers	10
Cabin entrance	11
Stairs to cabin	11

Salon	11
Salon seating from stairs	11
Breaker Box	12
Master bed	12
Breaker panel	12
AC	12
Salon seating	13
Salon Seating	13
Salon couch and table	13
Salon couch and table	13
Head door	14
Salon couch and table	14
Bathroom sink	14
Galley	14
Galley with microwave and TV	15
Galley with sink and stove	15
Galley fridge	15
Galley cabinets and fridge	15
TV	16
Salon seating	16
Stairs from deck to cabin	16
Cabin entrance	16
Cabin entrance	16
Cockpit seating	16
Helm/cockpit carpet	17
Helm controls	17
Starboard helm seating	17
Helm station	17
Forward view of cockpit seating	18

Cockpit sink, fridge, storage	18
Cockpit area	18
Port side helm seating	18
Cockpit seating	18
Cockpit seating	18
Engine room hatch	19
Engines	19
Engines	19
Generator	19
Shore cord and Swim platform	20
CONTACTS	21
Contact details	21
Telephones	21
Office hours	21
Address	21

SPECIFICATIONS

Basic Information

Category: Cruiser

Sub Category: Express

Model Year: 2008

Year Built: 2008

Country: United States

Dimensions

LOA: 33' 0" (10.06m)

Beam: 10' 9" (3.28m)

Min Draft: 2' 2" (0.66m)

Max Draft: 3' 2" (0.97m)

Clearance: 11' 2" (3.40m)

Speed, Capacities and Weight

Displacement: 12000 Pounds

Water Capacity: 35 Gallons

Holding Tank: 27 Gallons

Fuel Capacity: 170 Gallons

Accommodations

Total Cabins: 1

Total Berths: 7

Total Heads: 1

Hull and Deck Information

Hull Material: Fiberglass

Engine Information

Engines: 2

Manufacturer: Volvo

Model: Peneta 5.0 GXI DP

Engine Type: Inboard

Fuel Type: Gas/Petrol

DETAILED INFORMATION

Engines

- (2) Volvo Penta 5.0 GXI DP 270 HP (180 hrs on each engine)

Tankage

- Fuel: 170 gallons
- Holding: 27 gallons
- Fresh Water: 35 gallons

Galley

- Refrigerator
- Freezer
- Microwave
- Coffee Maker
- Two Burner Cook Top

Features

- Cockpit Cover
- Camper Canvas
- Cockpit Refrigerator
- Cockpit sink
- 17" flat screen TV
- DVD player
- Deck Pads
- A/C & Heat
- Windless anchor system
- Bow Spotlight
- (2) JL Audio Bullet speakers w/AMP (mounted on arch)

Exclusions

Owner's personal belongings.

Disclaimer

The Company offers the details of this vessel or yacht in good faith but cannot guarantee or warrant the accuracy of this information nor warrant the condition of the vessel. A buyer should instruct his representatives, agents, or his surveyors, to investigate such details as the buyer desires validated. This vessel or yacht is offered subject to prior sale, price change, or withdrawal without notice.

PHOTOS

Starboard profile



Starboard profile



Port profile



Starboard bow



Port view of bow



Port view of bow



Windshield cover



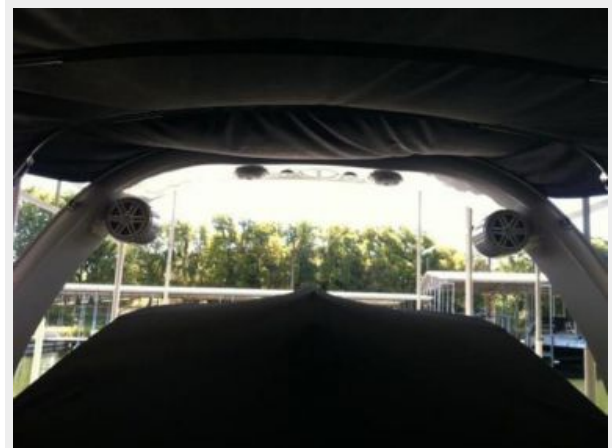
Bow view from Helm



Windshield



Arch with speakers



Cabin entrance



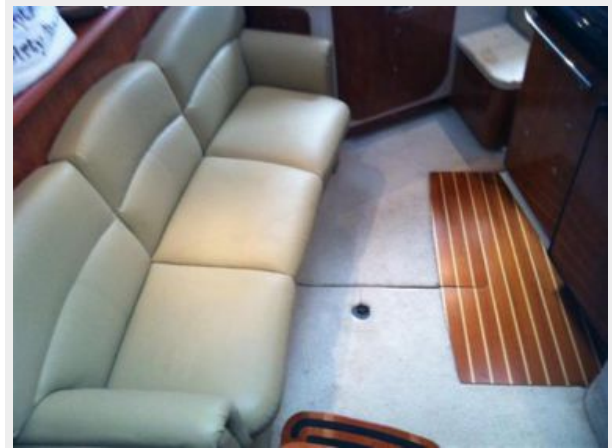
Stairs to cabin



Salon



Salon seating from stairs



Master bed



Breaker Box



Breaker panel



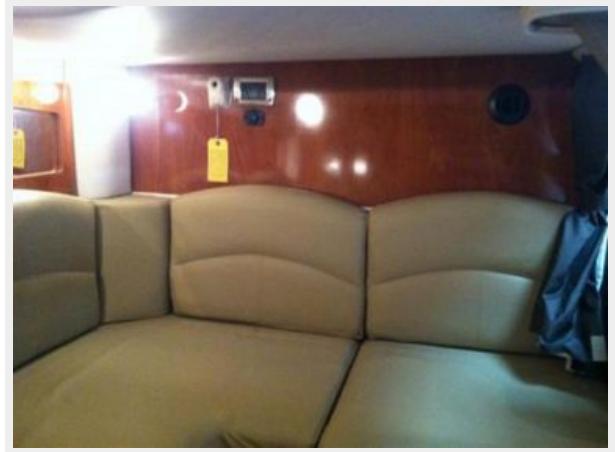
AC



Salon seating



Salon Seating



Salon couch and table



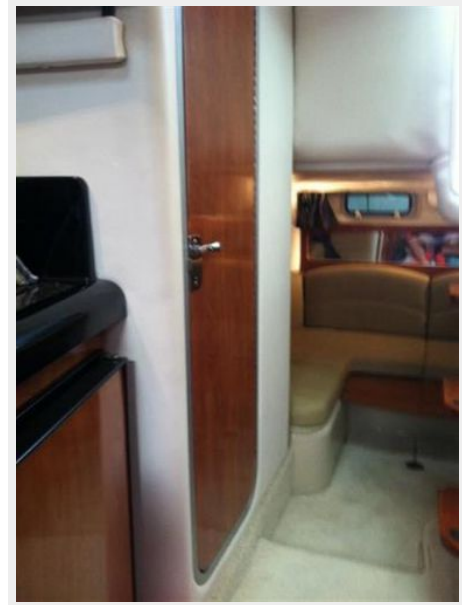
Salon couch and table



Salon couch and table



Head door



Bathroom sink



Galley



Galley with microwave and TV



Galley with sink and stove



Galley fridge



Galley cabinets and fridge



TV



Salon seating



Stairs from deck to cabin



Cabin entrance



Cabin entrance



Cockpit seating



Helm/cockpit carpet



Helm controls



Starboard helm seating



Helm station



Forward view of cockpit seating



Cockpit sink, fridge, storage



Cockpit area



Port side helm seating



Cockpit seating



Cockpit seating



Engine room hatch



Engines



Engines



Generator



Shore cord and Swim platform



CONTACTS

Andrey Shestakov, leading yacht broker of the sales department of Shestakov Yacht Sales Inc. Shestakov Yacht Sales Inc., the official representative of the Miami/Fort Lauderdale FL headquarters.

Contact details

Email: andrey@shestakovyachtsales.com

Web: shestakovyachtsales.com/en/

Telephones

USA: +1(954)274-4435

Office hours

Monday – Saturday: **9:00 - 21:00** EDT

Sunday: **closed**

Address



Harbour Towne Marina, 850 NE 3rd St,
STE 213, Dania, FL 33004