

NINA LU — WESTPORT



Builder: WESTPORT

Year Built: 2007

Model: Motor Yacht

Price: PRICE ON APPLICATION

Location: United States

LOA: 112' 0" (34.14m)

Beam: 23' 9" (7.24m)

Max Draft: 5' 6" (1.68m)

Our experienced yacht broker, Andrey Shestakov, will help you choose and buy a yacht that best suits your needs **Nina Lu — WESTPORT** from our catalogue. Presently, at Shestakov Yacht Sales Inc., we have a wide variety of yachts available on our sale's list. We also work in close contact with all the big yacht manufacturers from all over the world.

If you would like to buy a yacht **Nina Lu — WESTPORT** or would like help answering any questions concerning purchasing, selling or chartering a yacht, please call **+1(954)274-4435**

TABLE OF CONTENTS

TABLE OF CONTENTS	2
SPECIFICATIONS	3
Overview	3
Basic Information	3
Dimensions	3
Speed, Capacities and Weight	3
Accommodations	4
Hull and Deck Information	4
Engine Information	4
PHOTOS	5
CONTACTS	15
Contact details	15
Telephones	15
Office hours	15
Address	15

SPECIFICATIONS

Overview

Nina Lu represents a custom 112' Westport built and maintained by her original owner. She combines comfortable styling, responsive performance, and luxurious accommodations. Her main salon is inviting featuring warm tones with an elegant refinement. Forward and adjoining the salon is the formal dining area with seating for up to eight guests. Further forward on the main deck is the country kitchen style galley with wide granite top counter and circular settee. Her large pilothouse provides comfortable seating with a 270 degree visibility and state of the art electronics. Nina Lu provides accommodations for eight in four staterooms. Her spacious master stateroom features a king bed and his/her bath. There is a VIP stateroom forward with a queen berth, an additional queen stateroom aft and a twin stateroom which can convert to a king. All guest staterooms are well appointed and feature entertainment centers and private baths. Outdoor amenities include a large aft deck featuring dining table, occasional chairs and semi-circular fixed seating aft. There is also a wet bar with entertainment center to port. Her spacious flybridge features a custom hard top, wet bar with Gagganeau grill, Jacuzzi spa, lounge seating, and a boat deck for the Nautica tender, Yamaha cruiser, and Scooter.

Basic Information

Category: Motor Yacht

Model Year: 2007

Year Built: 2007

Country: United States

Fly Bridge: Yes

Dimensions

LOA: 112' 0" (34.14m)

Beam: 23' 9" (7.24m)

Max Draft: 5' 6" (1.68m)

Speed, Capacities and Weight

Water Capacity: 1025 Gallons

Holding Tank: 159 Gallons

Fuel Capacity: 5500 Gallons

Accommodations

Total Cabins: 4

Hull and Deck Information

Hull Material: Fiberglass

Engine Information

Engines: 2

Manufacturer: MTU

Model: 16V2000

Engine Type: Inboard

Fuel Type: Diesel

PHOTOS

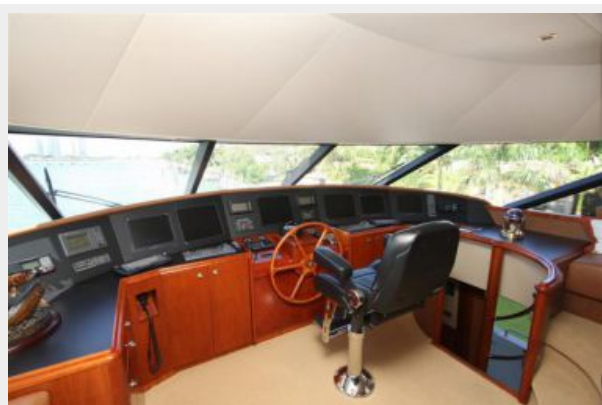
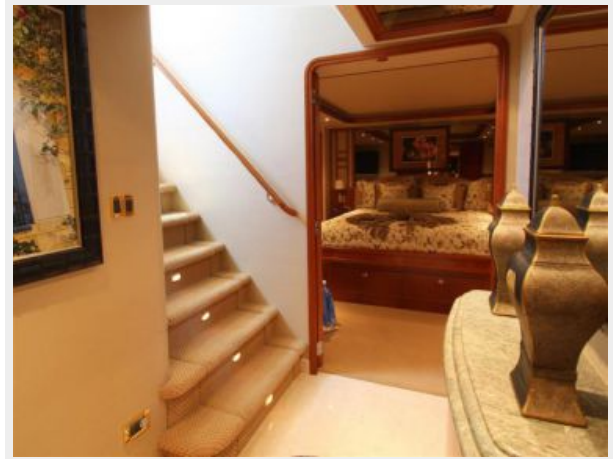


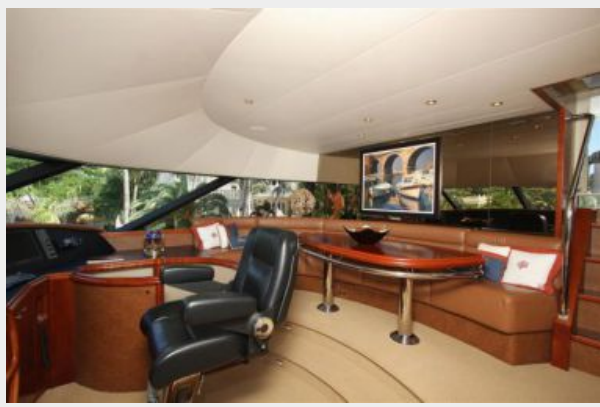


















CONTACTS

Andrey Shestakov, leading yacht broker of the sales department of Shestakov Yacht Sales Inc. Shestakov Yacht Sales Inc., the official representative of the Miami/Fort Lauderdale FL headquarters.

Contact details

Email: andrey@shestakovyachtsales.com

Web: shestakovyachtsales.com/en/

Telephones

USA: +1(954)274-4435

Office hours

Monday – Saturday: **9:00 - 21:00** EDT

Sunday: **closed**

Address



Harbour Towne Marina, 850 NE 3rd St,
STE 213, Dania, FL 33004