

## ARMY LANDING CRAFT — MONARK MARINE



**Builder:** [Monark Marine](#)

**LOA:** 74' 0" (22.56m)

**Year Built:** 1974

**Cruise Speed:** 11 Kts. (13 MPH)

**Model:** Commercial Vessel

**Price:** PRICE ON APPLICATION

**Location:** United States

Our experienced yacht broker, Andrey Shestakov, will help you choose and buy a yacht that best suits your needs **Army landing craft — Monark Marine** from our catalogue. Presently, at Shestakov Yacht Sales Inc., we have a wide variety of yachts available on our sale's list. We also work in close contact with all the big yacht manufacturers from all over the world.

If you would like to buy a yacht **Army landing craft — Monark Marine** or would like help answering any questions concerning purchasing, selling or chartering a yacht, please call **+1(954)274-4435**

---

# TABLE OF CONTENTS

---

TABLE OF CONTENTS	2
SPECIFICATIONS	3
Overview	3
Basic Information	3
Dimensions	3
Speed, Capacities and Weight	4
Hull and Deck Information	4
Engine Information	4
PHOTOS	5
CONTACTS	11
Contact details	11
Telephones	11
Office hours	11
Address	11

# SPECIFICATIONS

## Overview

This LCM-8 is a type of watercraft intended for use in rough or exposed waters. It is capable of operating through breakers and grounding on a beach, remaining upright and tight, and retracting under its own power. It can be transported to overseas destinations as cargo aboard transport ships. This craft is all-weather operational in sea state 1, 2 and 3. She can carry 50 tons of cargo on deck and a deck crane can be mounted. She has recently just come out of Government service and is no doubt the cleanest LCM on the market. Landing Craft Mechanized; LCM 8. Vessel is powered by two Detroit Diesel type 12V-71 Model 7122-7000 diesel engines; cooled by fresh water self-contained cooling systems, 2100 max rpm, 400HP at shaft; right hand rotation; 4.24 bore @ 5 stroke. Vessel equipped with twin propeller screws, and rudders; 24-Vdc (nominal) electrical system. Twin Disk transmission Mdl: MG-514C with hydraulic PTO mounted on top of transmission to power hydraulic winch for bow ramp. Bow ramp winching system powered by Gearmatic Mdl 22 hydraulic winch; vessel is equipped with Bosch hydraulic engine starting system. Kobelt Manufacturing Co mdl 2048 K propulsion control system. Radar and radios have been removed. Vessel is constructed of welded steel and has capacity for 54.4 tons of cargo. Length 74 x 20'11.75", Cargo deck is 42' . 9" long by 14'.5" wide; draft with full load 4' .6" load dependent, beam 21ft, speed 12 knots light and 9 knots loaded, it has a range of 190 miles at 9 knots full load, fuel capacity 950 GALS, fuel consumption is approximately 30 GPH, hull number LCM-8586 Located on the West coast of Florida. Other capabilities and features are as follows: **MOBILITY DATA** Speed (light) 11 knots (20.4 km/hr) (loaded) 9 knots (16.7 km/hr) Cruising Range (light) 332 nautical miles (614.9 km) (loaded) 271 nautical miles (501.9 km) **HULL AND ACCOMMODATIONS DATA** Length, overall 74 ft (22.55m) Beam, extreme 21 ft 0 5/8 In (6.40m) Beam, molded 20 ft 11 3/4 in (6.32m) Depth, molded amid ships 9 ft 4 in (284.5cm) Draft, loaded, mean 4 ft 6 in (137.16cm) Freeboard, loaded, mean 4 ft 10 in (147.32cm) Displacement (light) 58.81 long tons (59.8t) (loaded) 116.07 long tons (117.9t)

## Basic Information

**Category:** Commercial Vessel

**Sub Category:** Barge

**Model Year:** 1974

**Year Built:** 1974

**Country:** United States

## Dimensions

**LOA:** 74' 0" (22.56m)

---

## Speed, Capacities and Weight

---

**Cruise Speed:** 11 Kts. (13 MPH)

---

## Hull and Deck Information

---

**Hull Material:** Steel

**Deck Material:** Steel

**Hull Configuration:** Flat

---

## Engine Information

---

**Engines:** 2

**Manufacturer:** Detroit Diesel

**Model:** 12V71

**Engine Type:** Inboard

**Fuel Type:** Diesel

# PHOTOS

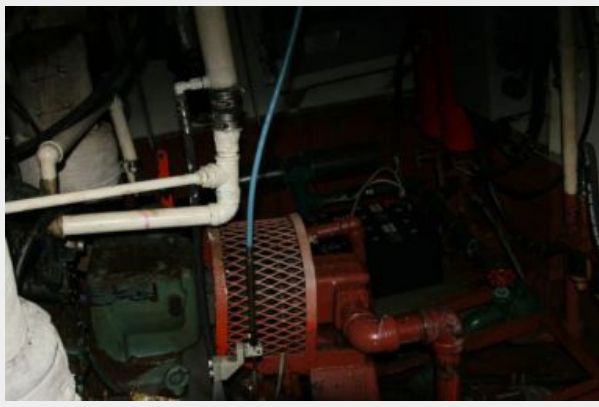














# CONTACTS

---

Andrey Shestakov, leading yacht broker of the sales department of Shestakov Yacht Sales Inc. Shestakov Yacht Sales Inc., the official representative of the Miami/Fort Lauderdale FL headquarters.

## Contact details

---

Email: [andrey@shestakovyachtsales.com](mailto:andrey@shestakovyachtsales.com)

Web: [shestakovyachtsales.com/en/](http://shestakovyachtsales.com/en/)

## Telephones

---

USA: +1(954)274-4435

## Office hours

---

Monday – Saturday: **9:00 - 21:00** EDT

Sunday: **closed**

## Address

---



Harbour Towne Marina, 850 NE 3rd St,  
STE 213, Dania, FL 33004