

## LORI LE ANN — CARVER



**Судостроитель:** CARVER

**Год постройки:** 2002

**Модель:** Моторная яхта

**Цена:** ЦЕНА ЯХТЫ ПО ЗАПРОСУ

**Местонахождение:** United States

**Длина общая:** 46' 6" (14.17m)

**Ширина:** 13' 11" (4.24m)

**Мин. осадка:** 3' 6" (1.07m)

Купить **Lori Le Ann — CARVER** а также выбрать подходящую вам яхту из нашего каталога яхт вам поможет опытный яхтенный брокер Андрей Шестаков. На сегодняшний день компания **Shestakov Yacht Sales Inc.** имеет большое количество яхт в собственном списке продаж, а также тесно сотрудничает со всеми крупными яхтенными производителями по всему миру.

Для того чтобы купить яхту **Lori Le Ann — CARVER** а также проконсультироваться по любому вопросу связанному с покупкой, продажей, чартером яхт позвоните по телефону **+7(918)465-66-44**.

# ОГЛАВЛЕНИЕ

---

ОГЛАВЛЕНИЕ	2
ХАРАКТЕРИСТИКИ	4
Обзор	4
Основная информация	4
Размеры	4
Скорость, вместимость и масса	4
Размещение	5
Корпус и палуба	5
Информация о двигателе	5
ПОДРОБНОЕ ОПИСАНИЕ	6
Engines	6
Mechanical	6
Electrical	6
Bridge	6
Upper Helm	7
Lower Helm	7
Aft Deck	7
Fore Deck	7
Side Decks	8
Cockpit	8
Salon	8
Galley	8
Master Stateroom	9
Forward Guest Stateroom	9
Water and Waste System	9
Safety & Navigation	9
Exclusions	10
Disclaimer	10

---

Исключения	10
Отказ от ответственности	10
<b>ФОТОГРАФИИ</b>	<b>11</b>
Salon	11
Salon Seating	11
Master Stateroom	11
Helm	11
Salon Seating	11
Head	12
Head	13
Shower	13
Guest Stateroom	13
Guest Stateroom	13
<b>КОНТАКТЫ</b>	<b>17</b>
Контактная информация	17
Телефоны	17
Время работы	17
Адрес	17

# ХАРАКТЕРИСТИКИ

## Обзор

**\$5,000 cash to buyer at closing if boat is sold during Ft. Myers Boat Show!** This Carver 444 Cockpit Motor Yacht has the additional space offered by an aft cabin motor yacht with a roomy cockpit large enough for relaxing or fishing. This unique vessel offers a fully equipped lower helm in the salon to starboard. There is not another boat with this feature in the US. With new \$20,000 electronics, new canvas, and new dinghy chocks, this boat shows very well. It is in the water and docked at the beautiful Legacy Harbor Marina in downtown Ft. Myers FL. Please call for an appointment to see this well maintained, beautiful vessel. You will not be disappointed.

**Owner will consider 22-24ft. Center Console on partial trade**

## Основная информация

**Тип судна:** Моторная яхта

**Подкатегория:** Кубрик

**Модельный год:** 2002

**Год постройки:** 2002

**Страна:** United States

## Размеры

**Длина общая:** 46' 6" (14.17m)

**Ширина:** 13' 11" (4.24m)

**Мин. осадка:** 3' 6" (1.07m)

**Трапы:** 18' 0" (5.49m)

## Скорость, вместимость и масса

**Водоизмещение:** 33860 Pounds

**Вместимость воды:** 90 Gallons

**Вместимость сточного бака:** 72 Gallons

**Объем топливного бака:** 404 Gallons

## Размещение

---

**Всего кают:** 2

**Всего коек:** 2

**Всего ком. состава:** 2

## Корпус и палуба

---

**Материал корпуса:** Fiberglass

## Информация о двигателе

---

**Двигатели:** 2

**Производитель:** Volvo

**Модель:** TAMD 63

**Тип двигателя:** Inboard

**Тип топлива:** Diesel

---

# ПОДРОБНОЕ ОПИСАНИЕ

---

## Engines

---

- TwinVolvo TAMD 63-365 hp
- Dual Racors on each engine
- Bilges coated with white gelcoat
- Diamond plate aluminum catwalk
- Insulation-acoustical and thermal
- Lights(4)-overhead,controls mounted under bottom stairway step

## Mechanical

---

- Dripless Shaft Logs
- Fuel Tank-welded,baffled,5052 aluminum
- Hydraulic Steering
- Shafts-aquamet
- Rudders-421 manganese bronze
- Seawater strainers
- Cutlass bearings-synthetic rubber composite
- Struts-421 manganese bronze
- Trim Tabs-stainless steel hydraulic

## Electrical

---

- Kohler 10kw generator with Racor fuel filter,+/- 300 hrs.
- AC/DC panel w/ breakers,AC voltmeter,AC ammeter
- Battery chargers-2 Charles
- Batteries-5
- Shore power-1x30A,1x50A
- GFCI-all AC outlets

## Bridge

---

- 110V outlet GFCI protected
- Lounge-accommodates 5 adults-storage under
- Wet bar,self draining sink,20" x 18" prep area, storage under
- Fridge with freezer built-in
- Windshield-wrap around,aluminum frame

---

## Upper Helm

---

- Garmin 5212 GPS,Chartplotter,Interfaced with Radar,Rear Camera
- Garmin Radar-HD 36 mile
- Garmin Camera
- Garmin 740S-GPS,Chartplotter, Depth,Fish Finder
- Bow Thruster,Windlass Controls
- Access hatch-28"x14" to access wiring below helm
- Adaptor-12V
- Companion seat
- DC circuit breaker panel for helm electronics
- Grab rails(2)-9.5" S.S. on each side of helm console
- Helm seat-pedestal adjustable,high quality marine-grade upholstery,embroidery stitching.
- Tilt steering wheel

---

## Lower Helm

---

- Garmin 5212 GPS, Chartplotter,Interfaced Radar,Camera
- Bow Thruster, windlass, spotlight controls
- Complete instrumentation
- Helm seating for two
- Tilt wheel

---

## Aft Deck

---

- 73 square feet,integral to deck,self draining
- Command bridge stairway-integral to deck with SS handrail
- Electronics arch
- Electronics arch access plates(5)
- Grab rail-25" SS across lockers
- Hand rail-1"OD,SS around entire aft deck
- Hardtop over entire aft deck
- Lights(4)-courtesy,recessed
- Lights(2)-overhead recessed
- Lockers(2)-upper and lower with double doors and top SS restraining rail
- Transom door,SS hardware,with 22" grab rail across top
- Wing doors-secure open and closed,acrylic in aluminum frame,SS hardware,provide easy access to side decks

---

## Fore Deck

---

- Cleats(2)-10" SS
- Cleat-10" SS for anchor line
- Locker-in deck,self draining,for fender storage and anchor chain
- Over- the-stem anchor roller

---

## Side Decks

---

- Bow rail-1" SS
- Bow rail stanchions-SS,laminated into deck
- Cleats(4)-10" spring
- Deck toe rail
- Grab rail-SS full length over cabin windows and above windshields
- Rub rail molding-heavy duty with SS insert

---

## Cockpit

---

- 73 square feet
- Aft deck stairway with 2 SS hand rails
- Boarding access from port or starboard dock
- Cleats(2)-10" inboard mounted with SS hawse pipes
- Direct access to master stateroom
- Hatch-Guttered,watertight,provides aft bilge pump access
- Recessed lighting
- Transom door-aluminum,SS hardware,with 22" grab rail across top

---

## Salon

---

- 110V-GFCI protected
- AC/DC Distribution pane
- Sofa,Flexsteel,storage under
- Sofa with two built-in recliners
- Lower Helm,fully equipped

---

## Galley

---

- 110V outlet-GFCI protected
- Flooring-wood plank
- Microwave/Convection-built in
- Range-three burner, ceran top
- Refrigerator/Freezer(upright)



- Sink SS

---

## Master Stateroom

---

- 110V outlets(3)-GFCI protected
- Berth-inner-spring mattress,offset island queen
- Cockpit door-sliding with screen and deadbolt
- Master head with electric head, shower stall

---

## Forward Guest Stateroom

---

- 2 -110V GFCI Outlets
- Queen Island Berth
- Carpet-Gold Rush
- Pocket style entrance door
- Cedar lined hanging locker
- 5 Halogen overhead lights
- 2 Screened portlights
- Overhead hatch
- Storage under berth
- Guest head adjacent with shower stall
- Electric head

---

## Water and Waste System

---

- Fresh water storage-1 tank,90 gallons total
- Dockside water connection with pressure reducing valve
- Shower sump pumps-2-auto and manual
- Waste holding-72 gallons total-1 tank,dockside pumpouts
- Water heater-12 gallons, 110v
- Hot and cold freshwater in transom

---

## Safety & Navigation

---

- Anodes-zinc,sacrificial
- Battery master disconnect switches
- Battery restraint brackets
- Bilge blowers(12V)
- Bilge pumps(3)-1500 gph each-automatic/manual operation
- Brass valves on thru hulls

- CO detectors in salon and staterooms
- Compass-illuminated
- Engine alarms-oil pressure and temperature
- Fire suppression system
- Galvanic isolator-zinc saver
- Horn-air/electric(12V)-trumpet
- Internal bonding system
- Molded non-skid on all walk decks-diamond pattern
- Navigation lights(Colregs)

## Exclusions

---

- Dinghy and motor
- Aft Deck Furniture

## Disclaimer

---

The Company offers the details of this vessel in good faith but cannot guarantee or warrant the accuracy of this information nor warrant the condition of the vessel. A buyer should instruct his agents, or his surveyors, to investigate such details as the buyer desires validated. This vessel is offered subject to prior sale, price change, or withdrawal without notice.

## Исключения

---

При продаже яхты исключаются личные вещи владельца.

## Отказ от ответственности

---

Компания предоставляет описание судна или яхты добросовестно, но не может гарантировать точность этой информации, а также не ручается за техническое состояние. Покупатель должен проинструктировать своих агентов или оценщиков исследовать представленную информацию более подробно, по собственному желанию. Продажа судна или яхты, изменение цены или снятие с продажи будет происходить без предварительного уведомления.

# ФОТОГРАФИИ

Salon



Salon Seating



Master Stateroom



Helm

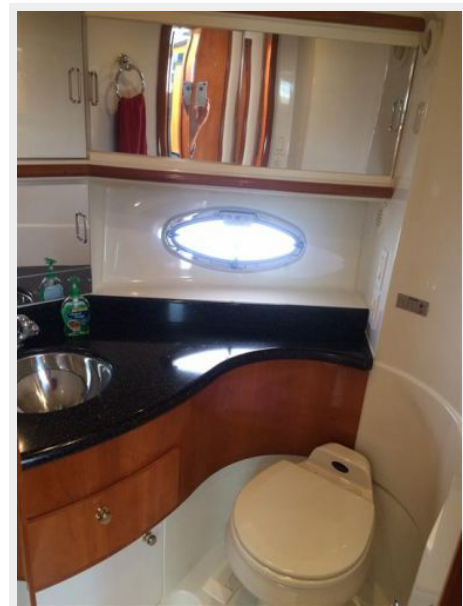


Salon Seating

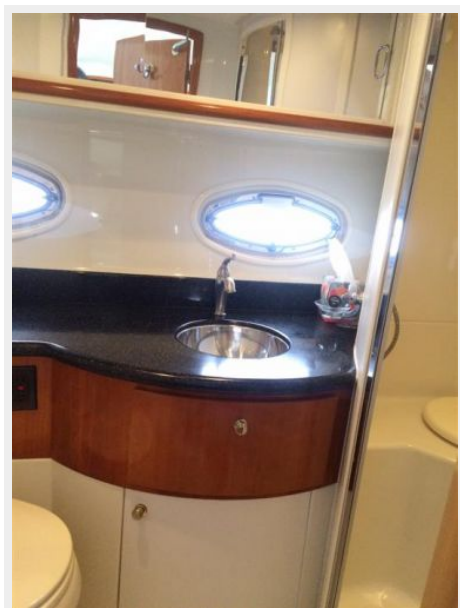




### Head



**Head**



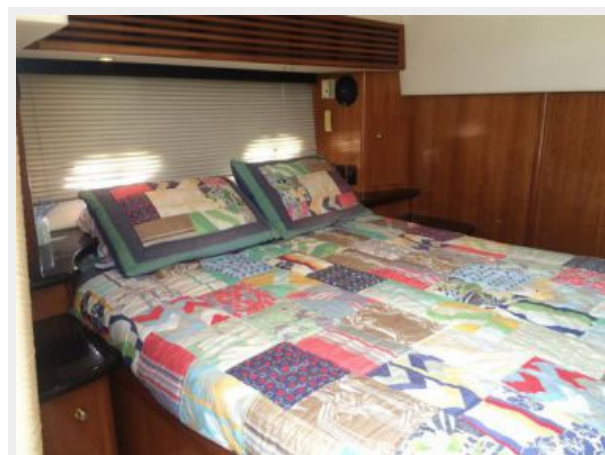
**Shower**



**Guest Stateroom**



**Guest Stateroom**











# КОНТАКТЫ

---

Андрей Шестаков (Andrey Shestakov) – ведущий яхтенный брокер отдела продаж яхт и судов компании Shestakov Yacht Sales Inc. Официальный представитель Shestakov Yacht Sales Inc. для русскоговорящих клиентов в центральном офисе компании в Майами/Форт Лодердейл/Флорида/США.

## Контактная информация

---

Email: [andrey@shestakovyachtsales.com](mailto:andrey@shestakovyachtsales.com)

Web: [shestakovyachtsales.com](http://shestakovyachtsales.com)

## Телефоны

---

Краснодарский край: **+7(918)465-66-44**

США, Майами, Флорида: **+1(954)274-4435**

## Время работы

---

Понедельник – Суббота: **9:00 - 21:00**  
EDT

Воскресенье: **Закрито**

## Адрес

---



Harbour Towne Marina, 850 NE 3rd St,  
STE 213, Dania, FL 33004