

SHOGUN — NORDHAVN



Судостроитель: NORDHAVN

Год постройки: 2012

Модель: Моторная яхта

Цена: **ЦЕНА ЯХТЫ ПО ЗАПРОСУ**

Местонахождение: Italy

Длина общая: 60' 0" (18.29m)

Ширина: 18' 0" (5.49m)

Мин. осадка: 6' 8" (2.03m)

Крейс. скорость: 8 Kts. (9 MPH)

Макс. скорость: 10 Kts. (12 MPH)

Купить **SHOGUN — NORDHAVN** а также выбрать подходящую вам яхту из нашего каталога яхт вам поможет опытный яхтенный брокер Андрей Шестаков. На сегодняшний день компания **Shestakov Yacht Sales Inc.** имеет большое количество яхт в собственном списке продаж, а также тесно сотрудничает со всеми крупными яхтенными производителями по всему миру.

Для того чтобы купить яхту **SHOGUN — NORDHAVN** а также проконсультироваться по любому вопросу связанному с покупкой, продажей, чартером яхт позвоните по телефону **+7(918)465-66-44**.

ОГЛАВЛЕНИЕ

ОГЛАВЛЕНИЕ	2
ХАРАКТЕРИСТИКИ	4
Обзор	4
Основная информация	4
Размеры	4
Скорость, вместимость и масса	4
Размещение	4
Корпус и палуба	5
Информация о двигателе	5
ПОДРОБНОЕ ОПИСАНИЕ	6
Broker's comment	6
Vessel walkthrough	6
Ancillary equipment	7
Capacities	8
Electrical	8
Communications and navigational equipment	8
Engines	8
Galley, domestic and laundry equipment	8
Entertainment equipment	8
Deck equipment	9
Исключения	9
Отказ от ответственности	9
ФОТОГРАФИИ	10
КОНТАКТЫ	15
Контактная информация	15
Телефоны	15
Время работы	15
Адрес	15

ХАРАКТЕРИСТИКИ

Обзор

M/Y Shogun's owner commissioned the construction of this superb long-range, full-displacement yacht using experience gained from a lifetime of boat ownership but in particular using the knowledge gained from a lifetime of boat ownership but in particular using the knowledge gained from owning a Nordhavn 55. This is the first Nordhavn N60 to have the extended boat deck covering the entire cockpit and an ensuite crew cabin just forward of the engine room, a bustle below the extended swim platform was also specified to eliminate annoying wave slap while at anchor and like all Nordhavns, this 60 has the ability to take owners to the far corners of the globe.

Основная информация

Тип судна: Моторная яхта

Подкатегория: Long Range Cruiser

Модельный год: 2012

Год постройки: 2012

Страна: Italy

Размеры

Длина общая: 60' 0" (18.29m)

Ширина: 18' 0" (5.49m)

Мин. осадка: 6' 8" (2.03m)

Скорость, вместимость и масса

Крейс. скорость: 8 Kts. (9 MPH)

Макс. скорость: 10 Kts. (12 MPH)

Водоизмещение: 59 Pounds

Размещение

Всего кают: 3

Корпус и палуба

Материал корпуса: GRP

Информация о двигателе

Двигатели: 2

Производитель: Luggar

Модель: L1066T

Тип топлива: Diesel

ПОДРОБНОЕ ОПИСАНИЕ

Broker's comment

M/Y Shogun's owner commissioned the construction of this superb long-range, full-displacement yacht using experience gained from a lifetime of boat ownership. This is the first Nordhavn N60 to have the extended boat deck covering the entire cockpit and an ensuite crew cabin just forward of the engine room, a bustle below the extended swim platform was also specified to eliminate annoying wave slap while at anchor and like all Nordhavns, this 60 has the ability to take owners to the far corners of the globe with her Transoceanic range. Powered by twin lugger engines she is also one of the only twin screw Nordhavn 60's available.

Vessel walkthrough

This is the first Nordhavn N60 to have the extended boat deck covering the entire cockpit and an ensuite crew cabin just forward of the engine room, a bustle below the extended swim platform was also specified to eliminate annoying wave slap while at anchor and like all Nordhavns, this 60 has the ability to take owners to the far corners of the globe. **Pilot house** The internal staircase to the engine room and the forward staircase to the GSR were eliminated creating more internal usable space and a full width pilot house console. The single internal staircase leads up to the vast pilot house with high end chrome accented Stidd helm chair, Raymarine G series is the heart of the sophisticated electronics package which includes 2 autopilots and Flir T 400 night vision camera. **Galley and Laundry** The all electric galley includes a full height sub zero refrigerator with drawers and a full height sub zero freezer with drawers and icemaker, white ceaserstone work tops and Italian mosaic tiles, trash compactor, microwave, full size dishwasher, 4 hotplate cooktop and oven with overhead exhaust fan, all appliances are Meile. Opposite the galley is a double pantry with a large drawer below for pots and pans. Forward of the pantry is an enclosed laundry with stacked Meile washer and dryer, a narrow full height cupboard next to the washer and dryer is used for the ironing board and detergents etc. **Main Salon** The salon has a central table for six with a full length sofa to starboard and a buffet to port with a 46 inch 3d Samsung TV on a lift, Blue Ray player, Sat Box and media center. A cocktail cabinet is forward of the sofa and storage abounds within the salon, white wooden venetian blinds accent the large windows. Sisal and wool carpet covers the wide teak plank flooring. Timber used throughout the interior is gloss light cherry with the grain running horizontally giving a more spacious feel to the interior. This is further enhanced by a full length glass rear door with internal Cherry lining. **Master Cabin** The ensuite master cabin port of the offset hallway has full length hanging wardrobe and shelves on the aft bulkhead, all cupboard doors are shoji style throughout the boat breaking the vast areas of cherry wood, a 36 inch Samsung TV is in a recess on the starboard bulkhead to access the satellite TV and media center. The master stateroom head has a Tecma full size toilet with bidet, the floor is wide teak planking, white ceaserstone vanity top and Italian mosaic tiles, shoji screens cover the vanity lights, high quality Zack fittings are used throughout the heads. **Guest cabins** Forward is the Guest cabin with ensuite to starboard with the same

high quality fittings as the master stateroom, a pocket door can be slid across to separate the cabin from the head when necessary, once again shoji screens are present on the 2 hanging wardrobes and forward overhead lockers, a cherry framed beveled mirror is above the bed head, reading lights are touch activated Cantilupi Mozza, a 32 inch Samsung TV is in a recess on the aft bulkhead with sat TV and media center. Another twin cabin aft of the pilot house is fully enclosed and redesigned to include a more usable ensuite bathroom. **Main deck** The forward deck has flush hatches and Tek Dek, a Maxwell 3500 electric winch with tall capstan compliments the Maxell 3500 tall capstan primary hydraulic winch. 120 meters of ½ inch shortlink chain attaches to a 100 KG ultra anchor, a Fortress FX 125 is mounted on the custom widened and higher pulpit. The forward mast has a forward anchor light and fittings for the anchor ball and club burgee. The aft boat deck is completely free for entertaining with built in electri-chef BBQ, sink, refrigerator in a console with ceaserstone worktop, Tek Dek covers this area. On the extended boat deck athwartship is a Zodiac 420 yachtline deluxe with 50 HP Yamaha outboard, sounder and VHF radio. Aft of the Zodiac is and Opacmare fully hydraulic davit with an SWL of 1100 KG, the Zodiac can be launched to port, starboard and aft. **Flybridge** Up the increased incline stairs to the fly bridge a high end chrome accented Stidd chair is central to the bridge with some separate and some duplicate instruments on the console, a hard top holds the radars while the mast aft holds the two V-SAT 7 domes and the M9, aerials are located in the dummy V-SAT 7 dome. As Shogun is a twin engined boat the stack area on the flybridge is used for storing long items such as the tender whips, fishing outriggers extra boat hooks etc. **Engine Room** The engine room contains the 2 lugger 1066 diesels of 165 HP each, a 20 KW northern lights generator, a sound insulated Lombardini 60HP diesel power pack driving an hydraulic pump, Boss Seatorque drives eliminate vibration and drag. The ABT Trac 300 series underway and at rest stabilizers are larger than the normal 250 series fitted to this sizeboat, the actuators are also in the engine room eliminating noise while at anchor. The Lombardini power pack can be used in many ways, if the load to the generator is increased while at anchor due to the at rest stabilizers working hard in a poor anchorage it can take over driving the stabilizers eliminating the need for the generator hydraulic pump, back up electrical power can be obtained from an hydraulic generator. Supplying full power to the thrusters when berthing in strong wind conditions though is the primary function as the RPM automatically increase from 1800 to 2700 when a thruster is engaged this ensures that while the main engines are at idle and the generator pump on, maximum thrust is obtained at both the stern and bow thrusters. **Crew Area** Along the starboard passageway is the entrance down a set of stairs to the airconditioned crew cabin and engine room, The crew cabin has a ¾ bed fore and aft with drawers under, a large 3 drawer duchess ison the forward bulkhead on this is the 19 inch Samsung TV and multi region DVD player and multi media entertainment system. To starboard is the head with Tecma electric toilet with bidet shower and hand basin. A pipe cot is housed in an athwartship box above the duchess. A door leading aft from the crew cabin is access to the engine room, an escape hatch is located in the engine room leading up to the salon.

Ancillary equipment

6 Ultra-Sonic transducers are fitted inside the hull to help control underwater growth Mach 5 domestic water pump Village Marine STW 600 water maker Desalinator: Village Marine STW600 Kahlenberg D2 air horn

Capacities

Fuel: 7500 litres Water: 2850 litres Holding Tank: 500 litres

Electrical

Generator: 20 KW Nothern Lights 230 volt 50 cycle 500 hours Hydraulic Power Pack: Lombardini 60 HP with 100 CFM pump

Communications and navigational equipment

Maretron NEMA 2000 backbone controlling: Raymarine G series with 3 screens Raymarine 140W backup plotter Raymarine 12KW digital 6 foot radar scanner Raymarine 24 inch dome radar Raymarine AIS transceiver Raymarine life tag system Raymarine ST70 instruments X 2 Raymarine autopilots X 2 with accusteer pumps Raymarine joy stick control Raymarine T400 night vision camera with JCU control Raymarine surveillance cameras X 6 including reverse image aft camera Raymarine VHF Kahlenberg D2 automatic control panel Maxwell chain counter KVH V-SAT 7 Modem Wave Wi Fi. Cell booster with aerial Sea-Me dual band radar reflector

Engines

Twin Lugger L1066T HP: 165 ea Engine/Fuel Type: Diesel Engine Hours: Approx 600

Galley, domestic and laundry equipment

1 x clothes washer: Miele 1 x tumble drier: Miele 1 x 4 hob oven: Miele 1 x extraction fan 1 x microwave oven: Miele 1 x fridge/freezer: Sub Zero 1 x full sizedishwasher: Miele Novatronic 1 x trash compactor

Entertainment equipment

46" Tv on lift with Blue ray player 36" Samsung TV 32" Samsung TV Sat Box and Media Centre Wave Wifi

Deck equipment

Anchor Windlass: Maxwell 3500 electric winch with tall capstan Aft Warping Capstans: Maxwell 3500 Passarelle: Opacmare Davit: Opacmare fully hydraulic davit with SWL of 1100 kg **Tender** Zodiac 420 yachtline deluxe with 50 HP Yamaha outboard, sounder and VHF radio

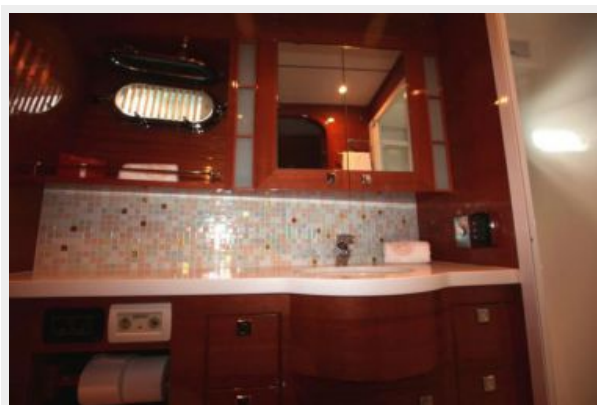
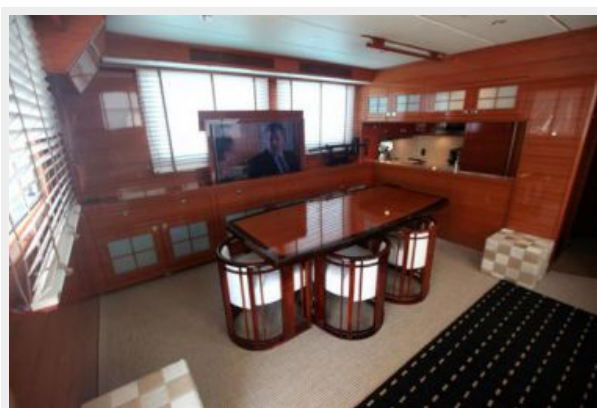
Исключения

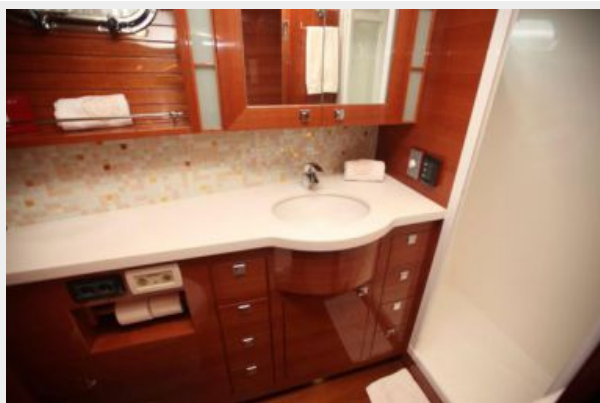
При продаже яхты исключаются личные вещи владельца.

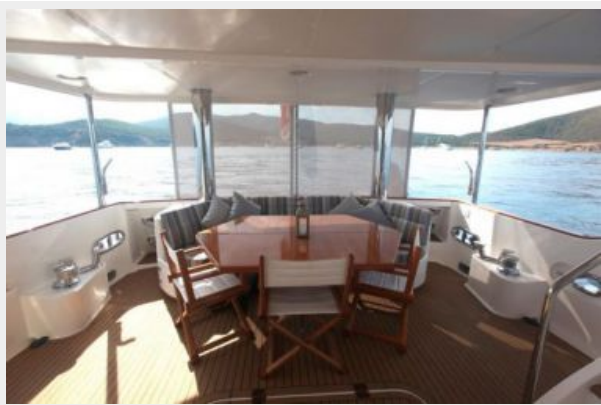
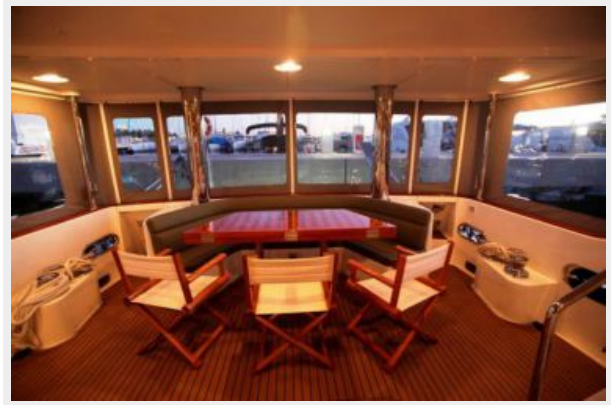
Отказ от ответственности

Компания предоставляет описание судна или яхты добросовестно, но не может гарантировать точность этой информации, а также не ручается за техническое состояние. Покупатель должен проинструктировать своих агентов или оценщиков исследовать представленную информацию более подробно, по собственному желанию. Продажа судна или яхты, изменение цены или снятие с продажи будет происходить без предварительного уведомления.

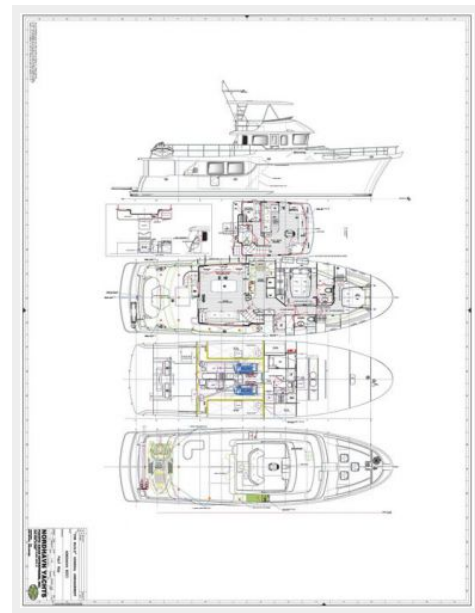
ФОТОГРАФИИ











КОНТАКТЫ

Андрей Шестаков (Andrey Shestakov) – ведущий яхтенный брокер отдела продаж яхт и судов компании Shestakov Yacht Sales Inc. Официальный представитель Shestakov Yacht Sales Inc. для русскоговорящих клиентов в центральном офисе компании в Майами/Форт Лодердейл/Флорида/США.

Контактная информация

Email: andrey@shestakovyachtsales.com

Web: shestakovyachtsales.com

Телефоны

Краснодарский край: **+7(918)465-66-44**

США, Майами, Флорида: **+1(954)274-4435**

Время работы

Понедельник – Суббота: **9:00 - 21:00**
EDT

Воскресенье: **Закрето**

Адрес



Harbour Towne Marina, 850 NE 3rd St,
STE 213, Dania, FL 33004