

## JUST RELAXING — JEFFERSON



**Судостроитель:** JEFFERSON

**Год постройки:** 2005

**Модель:** Моторная яхта

**Цена:** ЦЕНА ЯХТЫ ПО ЗАПРОСУ

**Местонахождение:** United States

**Длина общая:** 82' 0" (24.99m)

**Ширина:** 20' 3" (6.17m)

**Макс. осадка:** 6' 1" (1.85m)

Купить **Just Relaxing** — **JEFFERSON** а также выбрать подходящую вам яхту из нашего каталога яхт вам поможет опытный яхтенный брокер Андрей Шестаков. На сегодняшний день компания **Shestakov Yacht Sales Inc.** имеет большое количество яхт в собственном списке продаж, а также тесно сотрудничает со всеми крупными яхтенными производителями по всему миру.

Для того чтобы купить яхту **Just Relaxing** — **JEFFERSON** а также проконсультироваться по любому вопросу связанному с покупкой, продажей, чартером яхт позвоните по телефону **+7(918)465-66-44**.

# ОГЛАВЛЕНИЕ

---

ОГЛАВЛЕНИЕ	2
ХАРАКТЕРИСТИКИ	6
Основная информация	6
Размеры	6
Скорость, вместимость и масса	6
Размещение	6
Корпус и палуба	6
Информация о двигателе	6
ПОДРОБНОЕ ОПИСАНИЕ	7
Vessel Walkthrough	7
Salon	7
Galley	8
Master Stateroom	8
Master Head	8
VIP Stateroom	9
VIP Head	9
Guest Staterooms (2)	9
Guest Heads (2)	10
Crew Quarters	10
Lower Helm Station	10
Enclosed Flybridge	11
Upper Helm Area	11
Upper Deck - Aft Side	12
Foward Bow	12
Deck & Hull Hardware & Gear	12
Electrical System	13
Engine Room & Mechanical Equipment	13
Исключения	14

---

Отказ от ответственности	14
ФОТОГРАФИИ	15
Salon	15
Salon	15
Salon TV	15
Salon	15
Salon	15
Galley	15
Galley	16
Galley	16
Dining	16
Day Head	16
Day Head Artwork	16
Master Stateroom	16
Master Stateroom	17
Master Stateroom	17
Master Stateroom	17
Master Stateroom	17
Master Stateroom	17
Master Stateroom	18
Master Stateroom	18
Master Head	18
Master Head	18
Master Head	19
Master Head	19
VIP Stateroom	19
VIP Stateroom	19
VIP Stateroom	19
VIP Stateroom	19
VIP Head	20

---

---

VIP Head	20
Guest Stateroom	20
Guest Stateroom	20
Guest Stateroom	20
Guest Stateroom	20
Guest Stateroom	21
Guest Stateroom	21
Guest Head	21
Guest Head	21
Guest Head	22
Guest Head	22
Companionway	22
Stairwell	22
Crew Quarters, Port	23
Crew Quarters, Port	23
Crew Quarters, Port	23
Crew Quarters, Starboard	23
Crew Head	24
Crew Galley	24
Lower Helm	24
Lower Helm	24
Lower Helm	24
Lower Helm	24
Enclosed Flybridge	25
Enclosed Flybridge	25
Enclosed Flybridge	25
Enclosed Flybridge	25
Helm	25
Aft Deck	25

---

---

Aft Deck	26
Aft Deck	26
Foredeck	26
Flybridge	26
Flybridge	26
Bow	26
Tender	27
Tender	27
Passageway	27
Passageway	27
Engine Room	27
Engine Room	27
Engine Room	28
Engine Room	28
Engine Room	28
Engine Room	28
Engine Room	28
Engine Room	28
Engine Room	28
Bow Profile	29
Engine Room	29
Stern Profile	29
<b>КОНТАКТЫ</b>	<b>30</b>
Контактная информация	30
Телефоны	30
Время работы	30
Адрес	30

---

# ХАРАКТЕРИСТИКИ

## Основная информация

Тип судна: Моторная яхта

Модельный год: 2006

Год постройки: 2005

Страна: United States

## Размеры

Длина общая: 82' 0" (24.99m)

Ширина: 20' 3" (6.17m)

Макс. осадка: 6' 1" (1.85m)

## Скорость, вместимость и масса

Водоизмещение: 170000 Pounds

Вместимость воды: 90 Gallons

Объем топливного бака: 2450 Gallons

## Размещение

Всего кают: 6

Всего ком. состава: 7

## Корпус и палуба

Материал корпуса: Fiberglass

## Информация о двигателе

Двигатели: 2

Производитель: MTU

Модель: 10V2000

Тип двигателя: Inboard

Тип топлива: Diesel

---

# ПОДРОБНОЕ ОПИСАНИЕ

---

## Vessel Walkthrough

---

"Just Relaxing" is a Jefferson 82 foot four ensuite stateroom motor yacht with full crew cabin with private crew head and shower giving her accommodations for eight adults in comfortable berths plus 2 crew. This yacht is equipped with all of the necessary equipment to cruise north or south.

A large salon features opposing crescent sofas, large high gloss cherry coffee tables and a forward dining table for six. There are companionway stairs for the guest staterooms forward in the salon and a private master stateroom. The master and VIP mid cabin have king size beds and the two mid ship guest cabins are mirrored cabins with single twin berth arrangements. All guest cabins have private heads with showers.

The galley is located on the main deck and forward of the salon allowing for crew and chefs to access the galley or crew cabin without disturbing the owner and his/her guests through the forward side door.

- Four staterooms
- Four heads with showers
- 2 place crew cabin with head and shower
- Sleeps 8 plus crew
- All electric galley
- Pilot House lower helm station
- Fly Bridge Helm station
- Huge Salon and aft California Deck
- Enormous enclosed fly bridge entertainment center and BBQ Grills
- Walk-In Engine Room

## Salon

---

- Large couches port & starboard with storage
- (2) Large coffee tables with storage
- Swivel recliner
- Port side built in cabinet for dining (10) drawers
- Starboard side end tables with storage and (2) lamps
- Wood flooring throughout salon and dining area
- (6) Large windows with wood silhouette blinds
- Custom inlaid oval with light in ceiling
- (4) Cabinets for entertainment center
- Large Sony TV with surround sound
- Denon stereo with Sony DVD & VHS
- Direct TV receiver

- Pronto touch screen control
- Intercom/phone system
- Large round table with custom design and (6) chairs
- On deck day head

---

## Galley

---

- Wood flooring throughout
- A/C controls/lights with dimmers
- GE Stainless Steel Refrigerator with ice maker
- GE 4-burner electric stovetop w/GE microwave with vent & light
- Fisher and Paykel drawer style dish washer
- Large Stainless Steel sink with filter water dispenser and garbage disposal
- (25) Assorted cabinets and drawers
- Large side and front windows for ample natural light
- Black granite tops
- (2) Sliding cabinet storage areas
- Wood silhouette blinds
- Door to side deck
- On deck with crew cabin access

---

## Master Stateroom

---

- Large full beam master
- Queen bed with storage (4) drawers
- Sitting area Starboard with large hanging closet
- Mirror and custom lighting over headboard and on ceiling
- Solid wood flooring as well as veneer wall coverings
- Large walk-in closet port side with make-up counter/mirror
- Port hole windows both sides with sliding cloth shades
- (2) Night stands with lamps
- (22) Various cabinets and drawers for storage
- Intercom and light switches with dimmers
- Sharp Flat Screen TV with surround sound and sub woofer
- Pioneer DVD & Stereo
- Direct TV receiver

---

## Master Head

---

- White finishing with black granite top
- Dual sinks with silver faucets



- Porthole window with paper sliding shades
- Large Jacuzzi tub with 8 jets
- Grohe 8 Jet 2 head shower system
- (4) Decorative lights over picture framed mirror
- (6) Drawers and cabinets
- Stone tile floor

## VIP Stateroom

---

- Large forward stateroom with queen bed
- Custom wall to wall carpentry
- Wood veneer walls
- Large hanging closet to port
- Hydraulic ram lifts bed for large storage
- (10) Cabinet storage lockers/drawers
- (2) Large windows port & starboard with paper sliding shades
- (1) Large hatch allowing for loads of natural light
- Sharp Flat Screen TV with stereo and speakers
- Direct TV receiver
- Lights and AC controls

## VIP Head

---

- White lacquer cabinets
- (7) Cabinets with large storage
- Granite black top
- Stone tile flooring
- Shower with seat (6) jets on Grohe shower head

## Guest Staterooms (2)

---

### Identical Layouts

- (2) Single berths with storage underneath
- Night stand with (2) cabinets/drawers
- (4) Sided cabinets
- Port hole with paper shade sliding doors
- Toshiba TV with DVD
- Hanging closet
- Wall to wall carpeting
- Full length wall mirror

- Phone jack/AC controls/light switch w/dimmers
- (2) Over head reading lights

---

## Guest Heads (2)

---

- White lacquer walls
- Black granite countertop with silver faucet
- (2) Mirrored cabinet doors
- Large forward toilet
- Stone tile flooring
- (2) Large portholes for natural lighting
- Large shower with seat
- (4) Cabinet doors with storage

---

## Crew Quarters

---

- Rear entrance from swim platform
- Stairs on starboard side down to crew
- (2) Over-Under bunks - starboard
- (2) Criss -Cross bunks - Port
- Microwave and (2) burner cooktop
- Norcold fridge
- (6) Drawers with granite top and sink
- Toshiba TV with DVD in galley
- Intercom phone/electrical switches/AC controls
- Sharp TV in Stateroom
- Ensuite head

---

## Lower Helm Station

---

- Solid wood flooring throughout
- Large seating area with table - used as a breakfast bar
- (2) Side wing doors with side access for boarding ladder
- (2) Electrical panels with glass panel doors
- (9) Large windows
- (2) Electrical Genset start & stop panels with gauges
- 1 Stidd black helm chair
- Engine room fan blower panel with (4) switches
- (3) Wiper controls
- Bow and stern controls
- MTU controls with electronic gauge panels

- Remote windlass controls (2)
- (3) ACR Search lights with controls
- (2) Aft docking light controls
- Trim tabs and helm switches
- Electron bilge alarm/lighting
- Furuno radar
- Northstar 8000I GPS
- Simrad AP25 autopilot
- Fuel and water gauges
- Simrad RS86 VHF and intercom phone
- Gyro stabilize control
- Dell computer w/key pad
- SAT and Cell phone
- Remote start/stop H2O maker

---

## Enclosed Flybridge

---

- Custom bar with (4) barstools
- (5) Drawers in bar
- (2) Dining tables
- L-shaped sofa with storage and seating for (8)
- Drop down Sharp TV
- (15) Windows for natural lighting with wood blinds
- Refrigerator with freezer
- Icemaker
- Sink with fresh water
- Corian countertop
- Wood flooring throughout
- Pioneer AM/FM stereo with CD surround sound
- Direct TV dish
- Day head
- (2) Large glass sliding doors
- A/C and light controls

---

## Upper Helm Area

---

- (2) Stidd chairs
- Sirius radio and C/D player
- Bow & Stern controls
- Simrad AP25 Autopilot
- (3) ACR Spotlight controls
- (2) Windlass controls

- Hydraulic trim tab controls
- Electrical sub pan for complete flybridge
- Kult Tracphone
- Furuno radar
- Northstar 8000 GPS and Northstar 6100I
- Interphase twinscope camera monitor
- MDEC read out with MTU electronic controls
- Wesmar gyro controls
- (3) Wiper controls
- Icom VHF IC-504 and Simrad R886 VHF
- Nav computer
- Wrap-around work station starboard with (6) drawers
- 12V cigarette receptacle

---

## Upper Deck - Aft Side

---

- Port and starboard controls with thrusters and start/stops
- 4 Burner BBQ grill
- Large storage starboard side with fridge
- Ladder to top of H/T
- Stairs leading down to lower aft deck/Teak
- Door covering stairs with railing
- (2) Patio chairs
- Zodiac with 40hp Yamaha
- (6) Person Switlik raft
- 1000 pound Davit
- Stereo speakers
- Large aft deck

---

## Foward Bow

---

- Portuguese bridge with door to bow
- (6) Cabinets
- Boarding ladder
- (2) Cleats
- (2) Bench seats
- (2) Large storage areas
- (2) Windlass with double anchors
- Foot controls

---

## Deck & Hull Hardware & Gear

---

- (2) Simpson-Lawrence vertical wildcat/capstan anchor windlass
- (2) Navy style anchors each with all chain rode
- Fresh water and salt water wash downs
- Aluminum and teak 6 step side boarding stairs
- Port and starboard boarding gates
- Bottom paint
- Wheels conditioned
- Euro stern with stairs
- Fiberglass and teak swim platform with shower
- Coast Guard safety package
- (2) 20 gallon water heaters
- Teak decks (main deck) aft only
- Sunbrite TV port side aft deck
- Fridge with icemaker
- Large Teak table with (3) chairs
- Bench seating for (3)
- Teak deck
- Stereo speakers
- (2) Back up flood lights
- Stainless swim ladder

---

## Electrical System

---

- 100 Amp 220 VAC shore power cord each with a Glendenning retractor
- (2) Westerbeke 20kW generators
- (2) 24V alternators
- (2) 60 amp Charles chargers
- Dolphin 60 amp 12 volt charger
- Batteries - installed (engine room), (8)boxes, covered and secure
- (4) 12V for 24V system - main engines
- (2) 12V batteries for 12V system- generator
- (4) 12V batteries for a 24V system - house
- Electronics: 24 V off main engine bank
- (3) Acme transformers

---

## Engine Room & Mechanical Equipment

---

- Twin MTU diesels
- Bow and Stern thrusters
- Naid stabilizers model 302
- Cruisair air conditioning with (3) chiller units
- (2) Bronze four blade Nibral propellers 36X34.5

- (4) Racor fuel filters
- ZF BW 190 2.03:1 transmissions
- (6) 230 volt forced air engine room blowers
- (5) Bilge pumps - (4 manual, 1 hand)
- (2) 24V oil changing pumps servicing main engine, generators and gears
- Fuel primer system: manual pumps on main engines and generators
- 24V and 220V emergency bilge manifold system/fire pump system
- Air filters on main engines
- Sight gauge for fuel tanks
- CO2 Fire suppressant system (engine room)
- Custom Jefferson trim tabs
- Sea Recovery water maker
- Air Compressor
- Central VAC system

---

## Исключения

При продаже яхты исключаются личные вещи владельца.

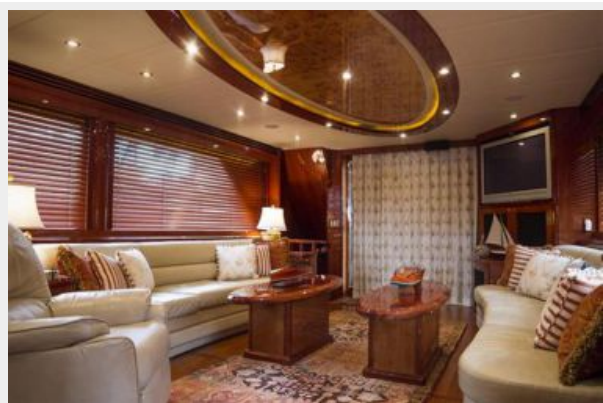
---

## Отказ от ответственности

Компания предоставляет описание судна или яхты добросовестно, но не может гарантировать точность этой информации, а также не ручается за техническое состояние. Покупатель должен проинструктировать своих агентов или оценщиков исследовать представленную информацию более подробно, по собственному желанию. Продажа судна или яхты, изменение цены или снятие с продажи будет происходить без предварительного уведомления.

# ФОТОГРАФИИ

Salon



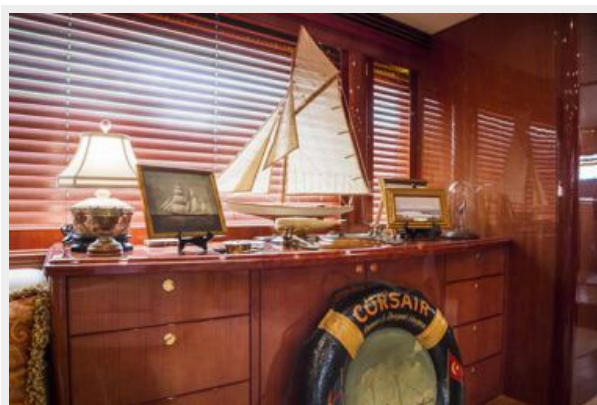
Salon



Salon TV



Salon



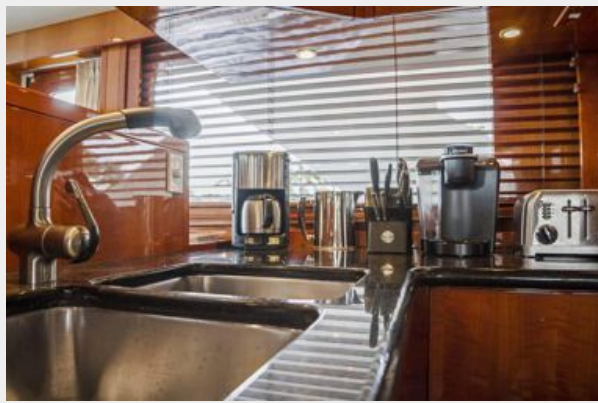
Salon



Galley



**Galley**



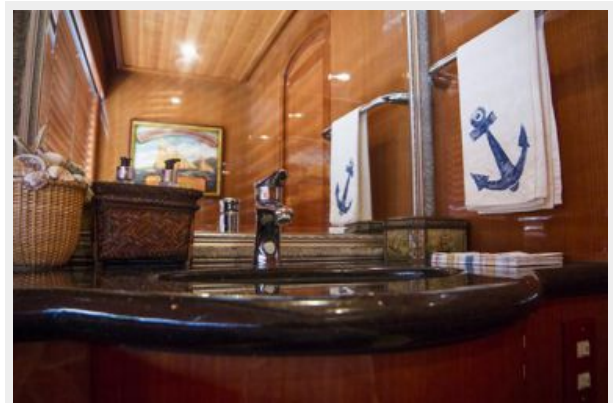
**Galley**



**Dining**



**Day Head**



**Day Head Artwork**



**Master Stateroom**





**Master Stateroom**



**Master Stateroom**



**Master Stateroom**

**Master Stateroom**



**Master Stateroom**



**Master Stateroom**



**Master Head**



**Master Head**



**Master Head**



**Master Head**



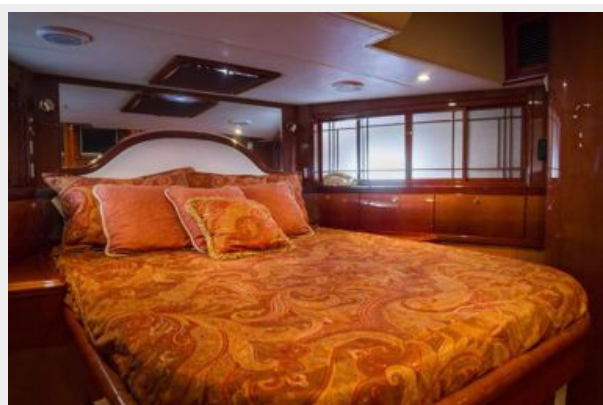
**VIP Stateroom**



**VIP Stateroom**



**VIP Stateroom**



**VIP Stateroom**



**VIP Head**



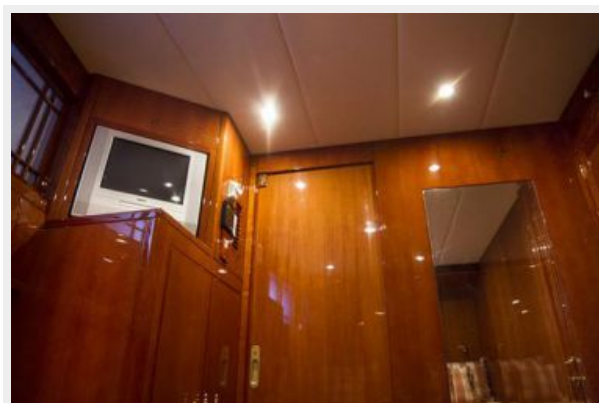
**VIP Head**



**Guest Stateroom**



**Guest Stateroom**



**Guest Stateroom**



**Guest Stateroom**



**Guest Stateroom**



**Guest Stateroom**



**Guest Head**



**Guest Head**



**Guest Head**



**Guest Head**



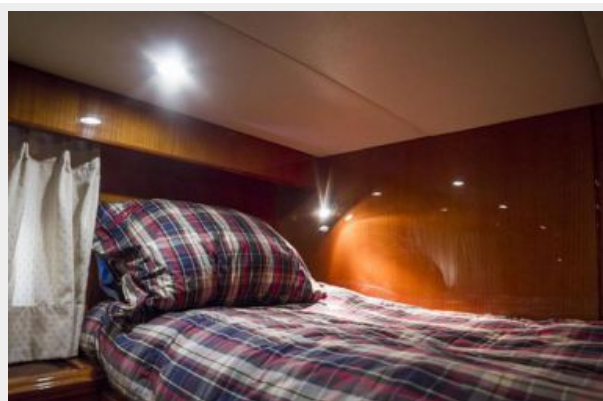
**Companionway**



**Stairwell**



**Crew Quarters, Port**



**Crew Quarters, Port**



**Crew Quarters, Port**



**Crew Quarters, Starboard**



**Crew Galley**



**Crew Head**



**Lower Helm**



**Lower Helm**



**Lower Helm**



**Lower Helm**





**Enclosed Flybridge**



**Enclosed Flybridge**



**Enclosed Flybridge**



**Enclosed Flybridge**



**Helm**



**Aft Deck**



**Aft Deck**



**Aft Deck**



**Foredeck**



**Flybridge**



**Flybridge**



**Bow**



**Tender**



**Tender**



**Passageway**



**Passageway**



**Engine Room**



**Engine Room**



**Engine Room**



**Engine Room**



**Engine Room**

**Engine Room**



**Engine Room**



**Engine Room**



**Engine Room**



**Bow Profile**



**Stern Profile**



# КОНТАКТЫ

---

Андрей Шестаков (Andrey Shestakov) – ведущий яхтенный брокер отдела продаж яхт и судов компании Shestakov Yacht Sales Inc. Официальный представитель Shestakov Yacht Sales Inc. для русскоговорящих клиентов в центральном офисе компании в Майами/Форт Лодердейл/Флорида/США.

## Контактная информация

---

Email: [andrey@shestakovyachtsales.com](mailto:andrey@shestakovyachtsales.com)

Web: [shestakovyachtsales.com](http://shestakovyachtsales.com)

## Телефоны

---

Краснодарский край: **+7(918)465-66-44**

США, Майами, Флорида: **+1(954)274-4435**

## Время работы

---

Понедельник – Суббота: **9:00 - 21:00**  
EDT

Воскресенье: **Закрито**

## Адрес

---



Harbour Towne Marina, 850 NE 3rd St,  
STE 213, Dania, FL 33004