

FOUR PLAY — LUHRS



Builder: LUHRS

Year Built: 1999

Model: Sport Fisherman

Price: PRICE ON APPLICATION

Location: United States

LOA: 36' 2" (11.02m)

Beam: 13' 10" (4.22m)

Min Draft: 3' 4" (1.02m)

Max Draft: 3' 6" (1.07m)

Cruise Speed: 25 Kts. (29 MPH)

Max Speed: 30 Kts. (35 MPH)

Our experienced yacht broker, Andrey Shestakov, will help you choose and buy a yacht that best suits your needs **FOUR PLAY — LUHRS** from our catalogue. Presently, at Shestakov Yacht Sales Inc., we have a wide variety of yachts available on our sale's list. We also work in close contact with all the big yacht manufacturers from all over the world.

If you would like to buy a yacht **FOUR PLAY — LUHRS** or would like help answering any questions concerning purchasing, selling or chartering a yacht, please call **+1(954)274-4435**

TABLE OF CONTENTS

TABLE OF CONTENTS	2
SPECIFICATIONS	5
Basic Information	5
Dimensions	5
Speed, Capacities and Weight	5
Accommodations	5
Hull and Deck Information	6
Engine Information	6
DETAILED INFORMATION	7
Walk Through	7
Cabin	7
Galley	7
Head	8
Foredeck	8
Helm Deck	9
Helm	9
Lower Cockpit	9
Fishing Equipment	10
Tower	10
Engine Room	10
Electrical	11
Actual LOA	11
Remarks	11
Exclusions	12
Disclaimer	12
PHOTOS	13
Cabin Looking Fwd	13
Stbd Side Settee	13

Fwd Berth	13
Cabin Entertainment Electronics	13
Port Side Settee Arrangement	13
Port Side Berth Arrangement	13
Berth Private Curtain	14
Galley	14
Cabin Entry Steps	14
Overhead Electrical Panel	14
Head	15
Head	15
Bow	15
Helm Deck	15
Custom Elevator Lift	15
Entry Door	15
Helm	16
Helm Seat	16
Cockpit	16
Cockpit Well	16
Port Side Storage Well	16
Cockpit	16
Bridge Deck Helm	17
Bridge Deck Seat	17
Helm on Bridge Deck	17
Foredeck	17
Engine Room	17
Fwd of Port Engine	17
Stbd Engine	18
Fwd of Stbd Engine	18
Generator	18

Transom	18
Bow	18
Alternate Profile	18
Dec 2014 Bottom Paint	19
No Apparent Blisters	19
Dec 2014 Haul Out	19
CONTACTS	20
Contact details	20
Telephones	20
Office hours	20
Address	20

SPECIFICATIONS

Basic Information

Category: Sport Fisherman

Sub Category: Express

Model Year: 2000

Year Built: 1999

Country: United States

Vessel Top: Marlin Tower

Cockpit: Yes

Dimensions

LOA: 36' 2" (11.02m)

Beam: 13' 10" (4.22m)

Min Draft: 3' 4" (1.02m)

Max Draft: 3' 6" (1.07m)

Speed, Capacities and Weight

Cruise Speed: 25 Kts. (29 MPH)

Max Speed: 30 Kts. (35 MPH)

Gross Tonnage: 11 Pounds

Water Capacity: 94 Gallons

Fuel Capacity: 400 Gallons

Accommodations

Total Cabins: 1

Sleeps: 4

Total Heads: 1

Hull and Deck Information

Hull Material: Fiberglass

Deck Material: Fiberglass

Hull Configuration: Deep Vee

Hull Designer: Luhrs

Exterior Designer: Luhrs

Interior Designer: Luhrs

Engine Information

Engines: 2

Manufacturer: Cummins

Engine Type: Inboard

Fuel Type: Diesel

DETAILED INFORMATION

Walk Through

Entering **FOUR PLAY** is from the port or starboard gunnels and is into the cockpit via a molded step or via the swim platform and walk through transom door. The lower cockpit is very spacious and set up for fishing. Three steps up is the raised helm deck with port and starboard center facing seating. The helm is to starboard and the entrance to the cabin is centerline. Going below are four teak steps into a large spacious Cabin. Immediately to starboard is the galley. Next forward is a settee with a teak table. All the way forward is a double berth. Going aft to port is a settee that converts to upper and lower bunks. Aft to port is an enclosed head with a stall shower.

Cabin

Down four steps from the helm deck via a sliding cabin door is the large open cabin of **FOUR PLAY**. The sole is carpeted with two large storage hatches below on centerline. Just forward of the galley is a settee with storage below and a removable twin pedestal dining table. Outboard of the settee are four teak storage cabinets and padded hull liner below. Next forward in a hidden cabinet is a privacy drape for the forward berth. A cedar lined auto lit hanging locker is next forward. The free form double berth is on centerline with two drawers and a storage cabinet below. To port is a shelf with an RCA TV/VCR combo and a Toshiba DVD player. Also above the berth are two JVC stereo speakers, four halogen mini spots and an opening Bomar deck hatch. Furthest forward is a smoked mirror on the forward bulkhead. Next aft is a port side settee of which the backrest folds up to become an upper bunk. Each bunk has a reading light. Also in the salon are two opening Bomar hatchets, 7 halogen mini spots, a CO detector, a JVC AM/FM/CD stereo and digital Marine Air AC controls. Under the entry stairs is a small door to the forward part of the engine room.

Galley

The galley is immediately to starboard upon entering the boat featuring an L shape and includes the following equipment:

- Nova Kool AC/DC refrigerator with freezer
- Corian counter top
- Princess two-burner stove top with Corian cover
- Pressure freshwater system
- Undermount stainless steel sink
- Single lever faucet

- Two under counter florescent lights
- GE turntable microwave
- Three teak door storage cabinets
- Four teak drawers
- Four sliding Lexan cabinet doors
- Foldout storage cuddy under sink

Head

Features of the private head include:

- Vanity with two cabinet doors below
- Corian counter top
- Undermount sink with a single lever faucet
- Mirrored medicine cabinet above
- Stall shower seat
- Tempered glass bifold door with side light
- Handheld or wall mounted shower fixture
- Small overhead hatch
- The toilet is a Groco electric model
- Three halogen mini spots
- Double door storage cabinet above head
- AC vent
- GFCI outlet

Foredeck

- Fiberglass non-skid decks
- Fiberglass molded pulpit
- Lewmar rope/Chain windlass
- Plow type anchor
- Up and down windless foot switches
- Anchor locker hinged hatch
- Welded aluminum bow rails
- Three deck hatches
- Three windshield wipers
- International navigation lights
- ACR remote searchlight
- Bow and midship cleats

Helm Deck

- Fiberglass non-skid deck
- Port and starboard facing helm deck seating
- Two over-head grab rails
- Three-sided Strataglass enclosure with three u zips
- Four drink holders
- Coast guard safety package
- Life jackets and life ring
- Fenders and dock lines
- Custom single person elevator to tower controls

Helm

- Two person upholstered helm seat
- Tilt helm wheel
- Full VDO Engine gauges
- Richie 4" magnetic compass
- Teleflex clutch and throttle controls
- Icom m 412 VHF (new January 2014)
- Robertson AP11 autopilot
- Furuno GP -1850 DF color sounder
- Glendenning synchronizer
- Raritan rudder angle indicator
- ACR point pad spotlight control
- Three windshield wipers
- Center opening hatch
- Sea-Fire fire suppression system monitor
- 12v accessory plug
- Bennett trim tab controls

Lower Cockpit

- Walk through transom door
- Coaming bolsters
- Two storage lockers
- Freshwater wash down
- Saltwater wash down
- Dockside water inlet with pressure regulator
- 50-amp shore power inlet
- TV/telephone inlet
- Fiberglass swim platform with under mount swim ladder

Fishing Equipment

- Rupp double spreader outriggers
- Four flush mount rod holder
- Four tower leg mounted rod holders
- Two three-drawer tackle drawers
- Starboard side bait well with light
- Port side hinge top storage well
- Large transom well with two access doors
- Large under-deck catch well
- Six place rocket launcher aft on hardtop

Tower

- Fiberglass non-skid sole
- Four person upholstered bench seat
- Large pipe buggy top with lace on Sunbrella fabric
- Control pod with lockable electronics cabinet
- Helm wheel
- Teleflex clutch and throttle controls
- Full VDO engine Gauges
- Rule 4" magnetic compass
- Engine start/stop switches
- Synchronizer controls
- Trim tab controls
- Robertson AP11 autopilot
- Icom m 32 VHF
- 12-volt accessory outlet
- ACR spotlight controls
- Helm cover
- Two VHF antennas
- Two aft facing quartz lights
- Bomar deck hatch for elevator

Engine Room

- Hydraulic engine hatch
- Sea-fire fire suppression system
- Coolant recovery bottles
- Oil x/change system
- Hydraulic pump for elevator
- Glendenning synchronizer

- Two Racor 900 fuel filters
- Jabsco washdown pump
- Groco engine intake strainers
- Bilge blower
- ZF IRM 280A transmission with 1.483 to 1 ratio
- Engine mufflers
- Generator muffler
- DC engine room lighting
- Jabsco macerator pump
- Two bilge pumps
- Seaward 6-gallon hot water heater

Electrical

- 110 volt AC electrical system
- 12 volt DC electrical system
- Sentry 12 volt 70 amp battery charger
- 2 Deka 8D batteries
- Three Perko battery switches
- Kohler 8 Kw generator 452 hrs
- Generator start battery

Actual LOA

The actual overall length is 38' 11".

Remarks

Serious Fishermen who are looking for an affordable vessel with great open water capabilities and a comfortable 13'10" beam will find a lot to like about this 36' Luhrs Open. The generously sized cockpit has room for a full sized fishing chair, and is adorned with a transom door for easy boarding. This boat has twin Cummins 450 Diamond series engines accessed via hydraulic hatch. Down below is a well laid out cabin adequately suited for families and overnight outings. Recently visited the yard for pre sale preparations including, 12/14 bottom paint, new impellers, new batteries, and service on the Kohler 8kw generator. Of all the Luhrs 36 models available, **FOUR PLAY** deserves special notice as she was recently gone through to make ready for sale AND she is the only Luhrs 36 giving handicap access to the tower. A simple lift mechanism has been added to the port side of the bridge deck giving easy access to the Marlin tower bridge deck.

If not needed the entire system could be removed in a day leaving only a Bomar hatch on the sole of the Marlin tower.

Seriously for sale. Easy to see in Lighthouse Point.

Exclusions

Owner's personal belongings.

Disclaimer

The Company offers the details of this vessel or yacht in good faith but cannot guarantee or warrant the accuracy of this information nor warrant the condition of the vessel. A buyer should instruct his representatives, agents, or his surveyors, to investigate such details as the buyer desires validated. This vessel or yacht is offered subject to prior sale, price change, or withdrawal without notice.

PHOTOS

Cabin Looking Fwd



Stbd Side Settee



Fwd Berth



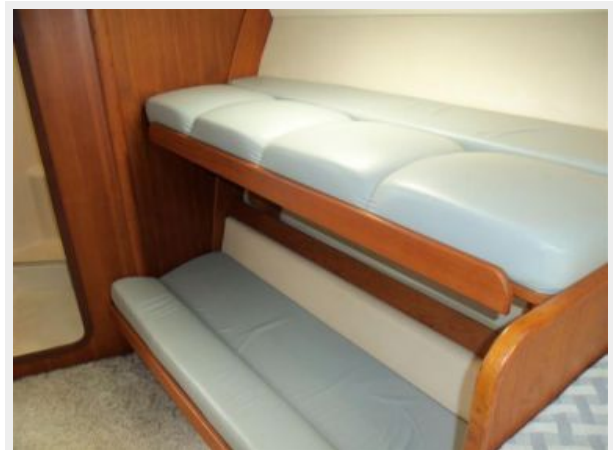
Cabin Entertainment Electronics



Port Side Settee Arrangement



Port Side Berth Arrangement



Berth Private Curtain



Galley



Cabin Entry Steps



Overhead Electrical Panel



Head



Head



Bow



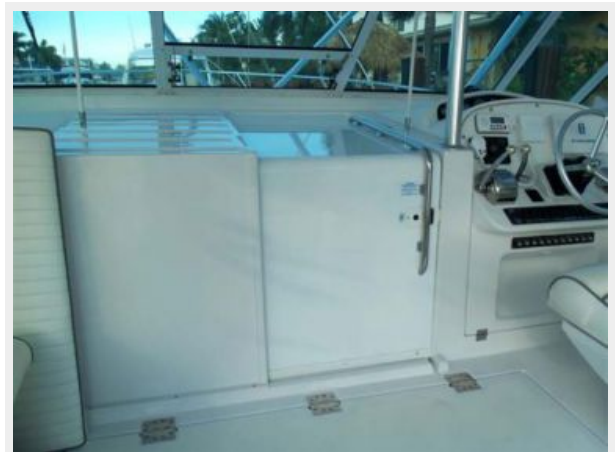
Helm Deck



Custom Elevator Lift



Entry Door



Helm



Helm Seat



Cockpit



Cockpit Well



Port Side Storage Well



Cockpit



Bridge Deck Helm



Bridge Deck Seat



Helm on Bridge Deck



Foredeck



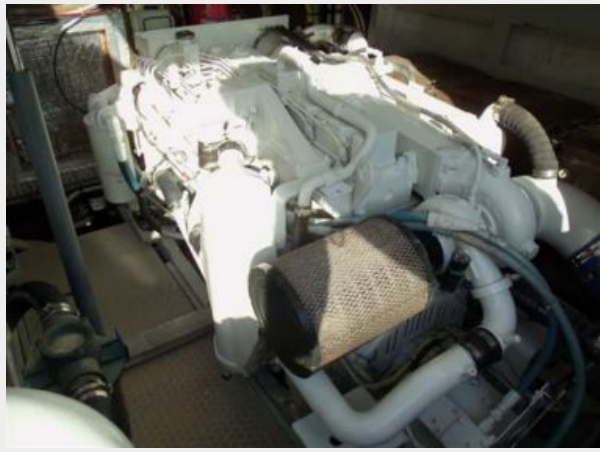
Engine Room



Fwd of Port Engine



Stbd Engine



Fwd of Stbd Engine



Generator



Transom



Bow



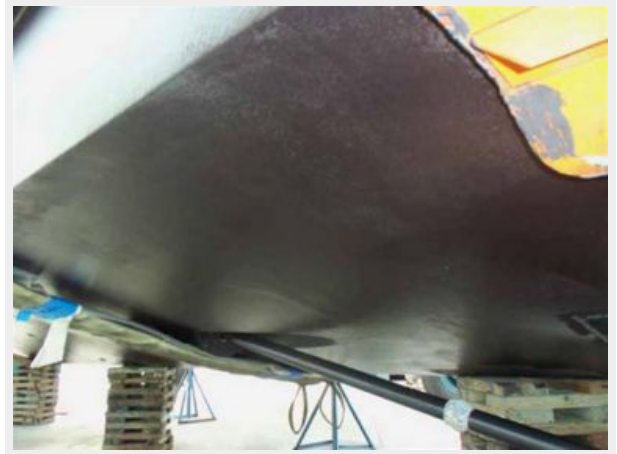
Alternate Profile



Dec 2014 Bottom Paint



No Apparent Blisters



Dec 2014 Haul Out



CONTACTS

Andrey Shestakov, leading yacht broker of the sales department of Shestakov Yacht Sales Inc. Shestakov Yacht Sales Inc., the official representative of the Miami/Fort Lauderdale FL headquarters.

Contact details

Email: andrey@shestakovyachtsales.com

Web: shestakovyachtsales.com/en/

Telephones

USA: +1(954)274-4435

Office hours

Monday – Saturday: **9:00 - 21:00** EDT

Sunday: **closed**

Address



Harbour Towne Marina, 850 NE 3rd St,
STE 213, Dania, FL 33004