

VALKYRIE — CRESCENT



Судостроитель: CRESCENT

Год постройки: 2001

Модель: Моторная яхта

Цена: **ЦЕНА ЯХТЫ ПО ЗАПРОСУ**

Местонахождение: United States

Длина общая: 120' 0" (36.58m)

Ширина: 25' 0" (7.62m)

Мин. осадка: 6' 0" (1.83m)

Крейс. скорость: 17 Kts. (20 MPH)

Макс. скорость: 19 Kts. (22 MPH)

Купить **VALKYRIE — CRESCENT** а также выбрать подходящую вам яхту из нашего каталога яхт вам поможет опытный яхтенный брокер Андрей Шестаков. На сегодняшний день компания **Shestakov Yacht Sales Inc.** имеет большое количество яхт в собственном списке продаж, а также тесно сотрудничает со всеми крупными яхтенными производителями по всему миру.

Для того чтобы купить яхту **VALKYRIE — CRESCENT** а также проконсультироваться по любому вопросу связанному с покупкой, продажей, чартером яхт позвоните по телефону **+7(918)465-66-44**.

ОГЛАВЛЕНИЕ

ОГЛАВЛЕНИЕ	2
ХАРАКТЕРИСТИКИ	6
Основная информация	6
Размеры	6
Скорость, вместимость и масса	6
Размещение	7
Корпус и палуба	7
Информация о двигателе	7
ПОДРОБНОЕ ОПИСАНИЕ	8
Accommodations	8
Main Salon & Dining Area	9
Galley	9
Lower Deck Foyer	10
Master Stateroom	10
VIP Queen Stateroom	11
Queen Guest Stateroom	11
Twin Guest Stateroom	11
Crew Quarters	12
Pilothouse Equipment	12
Pilothouse Electronics	12
Flybridge Electronics	13
Flybridge Equipment	14
Tenders	14
Aft Deck	14
Cockpit Equipment	15
Deck Equipment	15
Engineer/Control Room	16
Electrical Equipment	17

Engine Room & Mechanical Equipment	17
Exclusions	17
Исключения	18
Отказ от ответственности	18
ФОТОГРАФИИ	19
Main Salon, Forward	19
Main Salon	19
Main Salon	19
Main Salon, Aft	19
Dining Area	19
Dining Area	19
Dining Area	20
Formal Dining	20
Galley	20
Galley	20
Galley	20
Galley Dinette	20
Pilothouse	21
Pilothouse Helm	21
Pilothouse Helm Station	21
Pilothouse Chart	21
Pilothouse Settee	21
Lower Deck Foyer	21
Master Stateroom	22
Master Stateroom	22
Master Stateroom	22
Master Stateroom, Desk/Vanity	22
Master His & Her Bath	22
Master His & Her Bath	22

VIP Guest Stateroom	23
VIP Guest Bath	23
Queen Guest Stateroom	23
Guest Bath	23
Guest Stateroom	23
Flybridge Helm	23
Flybridge	24
Flybridge	24
Flybridge Settee	24
Flybridge Grill	24
Deck, Tenders	24
Deck, 24' EdgewaterTender	24
Forward Deck	25
Aft Deck	25
Aft Deck	25
Aft Deck	25
Cockpit	25
Cockpit	25
Cockpit	26
Stern	26
Captain's Cabin	26
Crew Cabin	26
Engineer/Crew Cabin	26
Engineer/Control Station	26
Engine Room	27
Layout	27
КОНТАКТЫ	28
Контактная информация	28
Телефоны	28

Время работы	28
Адрес	28

ХАРАКТЕРИСТИКИ

Основная информация

Тип судна: Моторная яхта	Подкатегория: Кубрик
Модельный год: 2001	Год постройки: 2001
Год обновления: 2011	Вид обновления: New paint, repowered engines, new teak decks & interior
Страна: United States	Верх: Raised Pilothouse
Открытая палуба мостика: Да	Кубрик: Да

Размеры

Длина общая: 120' 0" (36.58m)	Длина по ватерлинии: 119' 11" (36.55m)
Ширина: 25' 0" (7.62m)	Мин. осадка: 6' 0" (1.83m)
Трапы: 19' 6" (5.94m)	Длина привального бруса: 120' 0" (36.58m)

Скорость, вместимость и масса

Крейс. скорость: 17 Kts. (20 MPH)	Крейсерская скорость поворота: 1950 Kts.
Макс. скорость: 19 Kts. (22 MPH)	Макс. скорость поворота: 2305 Kts.
Чистый вес: 210 Pounds	Вместимость воды: 1000 Gallons
Вместимость сточного бака: 400 Gallons	Объем топливного бака: 9550 Gallons

Размещение

Всего кают: 4

Спальные места: 8

Всего ком. состава: 9

Каюта капитана: Да

Каюты экипажа: 3

Спальных мест экипажа: 7

Комм. состав экипажа: 2

Корпус и палуба

Материал корпуса: Fiberglass

Материал палубы: Teak over Fiberglass

Комплектация корпуса: Semi-Displacement

Дизайнер корпуса: Jack Sarin

Дизайнер экстерьера: Jack Sarin

Дизайнер интерьера: Robin Rose

Информация о двигателе

Двигатели: 2

Производитель: MTU

Модель: 16V-2000 M90

Тип топлива: Diesel

ПОДРОБНОЕ ОПИСАНИЕ

Accommodations

Entering the yacht through the electrically-actuated door from the aft deck, you walk into the open and comfortable Main Salon. Oversized windows bring in natural lighting and sections of grass cloth wallcovering combined with warm upholstered furnishings and carpet compliment the amazing mahogany woodwork. The formal dining area is forward separated from the salon by low mahogany cabinetry and columns. The mahogany dining table extends to seat eight. On the forward bulkhead is a built-in display/china cabinet with granite surfaces, refrigerator and ice maker along with dedicated china and crystal storage behind mahogany doors with grass cloth inserts. There are lit glass display shelves on both sides of the centered lit recessed artwork. Moving forward to starboard is entrance to a beautiful day head, followed by a granite floored foyer for a formal side entrance. An art alcove is on the inboard bulkhead and access to the pilothouse and galley are forward. The well-appointed Galley is spacious with a three-seated breakfast bar/island in the center and large dinette with seating for eight around a granite table. Mahogany cabinetry with burl wood inserts are across the forward bulkhead, cleverly concealing additional refrigeration. Access to lower crew quarters forward. Just forward and port of the dining area is another side entrance and staircase down to the lower deck with four staterooms. Forward are double doors entering the large, full-beam Master Stateroom featuring his and her master bath. Beautiful woodwork is used throughout the vessel and is accompanied by light-colored grass cloth wallcovering and natural light in almost every room providing a bright, open feel even with all the gorgeous mahogany. This balance carries through the other three staterooms accessed from the same foyer. The pilothouse is equipped with full array of electronics suited for traveling the world. There are two separate areas for full-sized charts to be used and a captain's office area in view of the helm. A large raised L-shaped settee provides excellent views through the upgraded 1" tempered glass windshield and a Stidd captain's chair is within easy reach of the helm and proper navigation equipment. Up the stairs from the pilothouse is access to the flybridge helm and two wing stations equipped for easy operation. The flybridge offers plenty of seating along with a stainless steel grill, bar with refrigerator and icemaker and settee area. All of this is surrounded by a three sided enclosure. The boat deck was built with a large amount of extra structure to accommodate an 8000 lb davit with 340 degree turn capability to launch the 24' Edgewater center console, the Novurania 18' RIB or either of the two Kawasaki skis to port, aft or starboard with minimal lean, by design. There is a hatch in the boat deck with stairs to aft deck. The large aft deck is shaded by the boat deck and features built-in dining area, bar and an additional day head. Facing aft and overlooking the huge fishing cockpit is long built-in bar/table with four teak chairs. Dual stairs, port and starboard, lead down to the enormous cockpit fully rigged for tournament sportfishing. Equipped with a 130lb class fighting chair, full tackle centers and in-deck fish box which is plumbed with chipped ice from the Eskimo machine. Outriggers, rod holders and a tuna door accompany the teak decks and covering boards and there's even a back-down control station above, facing aft on the boat deck. From the cockpit through a watertight door is the engineers control room along with crew cabin, head and access to engine room.

Main Salon & Dining Area

- Custom interior with mahogany joinery w/burle accents throughout
- Custom mahogany crown molding w/rope design throughout
- Custom upholstered sofa w/lockable storage below
- Large, high gloss mahogany coffee table
- (2) Upholstered occasional chairs w/ottomans
- (3) End tables w/drawers & table lamps
- Game table w/ (2) upholstered chairs
- Custom window treatments w/electrically actuated blinds & manual black-out shades
- Custom cabinet for NEC 42" TV w/ hi-lo lift (can be viewed both ways) Kaleidscape control, Crestron control & surround sound
- Electrically actuated door to aft deck
- (2) Large mahogany "rope" columns, port & stbd w/crown molding
- Mahogany dining table w/ (8) upholstered dining chairs
- Custom overhead soffit w/mahogany crown molding, grass cloth panels & lighting
- Mahogany built-in buffets w/storage cabinets below, port & stbd
- Built-in mahogany display cabinet on forward bulkhead w/granite surface, cabinet doors w/grass cloth insets, U-line refrigerator, icemaker & wine cooler below, storage for china & crystal, lit display shelves on each side Day Head:
 - Mahogany vanity w/granite top
 - Custom fixtures
 - Mirrored panels
 - Custom grass cloth wallcovering
 - Granite flooring
- Headhunter head Main Deck Foyer:
 - Marble flooring
 - Art niche
- Custom stairwell w/mahogany tambour to lower deck
- Electronics room where Crestron Kaleidscape media system/server is stored

Galley

- Center island / breakfast bar with (3) bar-height chairs
- Granite countertops
- Sub-Zero 690 side-by-side refrigerator/freezer
- Dacor Oven
- Thermador 5-burner ceramic stovetop
- Thermador warming drawer
- Recessed exhaust vent
- Sharp Carousel convection/microwave
- Miele Futura dishwasher
- Kitchenaid trash compactor

- (3) Add'l refrigeration units hidden behind cabinetry in bulkhead (they can also be used as freezers in any combination)
- Large dinette w/built-in seating, granite top table w/lockable slide & (3) chairs
- Privacy doors hidden in wall trim
- Tile flooring w/granite key tiles
- Access to crew accommodations forward
- The galley refrigerators can be water or air cooled with their compressor locker located on crew stairs for ease of service

Lower Deck Foyer

- Large custom stairwell w/mahogany tambour panels, custom s/s handrail & carpeted steps
- Marble flooring
- Custom 'weaved' textured wallcovering
- Built-in mahogany display cabinet w/marble top, custom hand-carved fish tails & storage below
- Large gold frame mirror
- Halogen lighting
- Laundry center w/Miele washer & dryer

Master Stateroom

- King-size berth w/drawer storage below, custom spread & shams
- Custom upholstered headboard
- (2) Swing-arm reading lamps above bed
- (2) Built-in nightstands w/marble inserts
- Built-in display cabinet/bookshelves w/glass door & gold "rope" rails on shelving, above each nightstand
- Custom mahogany soffit w/halogen lighting over bed
- Built-in mahogany dressers & cabinets, port & stbd
- Built-in mahogany desk/vanity w/hand carved seahorse, drawers & cabinets
- Panasonic 42" TV, Kaleidescape control & surround sound
- Halogen lights w/dimmer
- Custom grass cloth wallcovering
- Mahogany crown molding
- Mahogany chair rails
- Radius mahogany doors w/burl wood inlays
- Port lights, port & stbd, w/tie-back draperies
- Large, cedar-lined walk-in closet w/escape hatch His & Her Master Bath:
- Radius front, mahogany vanities w/raised panels, marble top, custom hardware
- (2) Sinks w/custom gold plated & crystal fixtures
- (7) Mirrored medicine cabinets

- Overhead mirrors w/mahogany trim
- Large, walk-in marble shower w/ (2) Speakman shower heads, separate water/temp controls & seamless glass enclosure
- Separate toilet room
- Custom grass cloth wallcovering
- Flush mounted overhead speaker

VIP Queen Stateroom

- Custom Queen berth w/drawers below, custom spread & shams (can be converted to twins)
- Padded panels on bulkhead behind berth
- Custom cabinet & bookshelf above berth w/halogen lighting
- Built-in 2-drawer nightstands
- Built-in 6-drawer dresser w/bookshelf above
- Mahogany crown molding
- Large port light w/draperies
- TV, Kaleidescape control & surround sound
- Radius mahogany doors w/raised panels
- Private bath w/mahogany vanity, marble top, sink, gold plated fixtures, mirrored bulkhead, overhead mirror, marble shower w/seamless glass enclosure, gold plated fixtures, custom wallcovering, port light, Headhunter head & marble flooring

Queen Guest Stateroom

- Queen berth w/drawers below, custom spread & shams
- Custom mahogany headboard
- Built-in 2-drawer nightstands
- (2) Mirrors over nightstands w/light sconce
- Built-in 6-drawer dresser w/bookshelf above
- TV, Kaleidescape control & surround sound
- Mahogany crown molding
- Porthole w/drapes
- Halogen lighting w/dimmer
- Cedar-lined closet
- Radius mahogany & burl doors w/raised panels
- Private bath w/mahogany vanity, granite top, sink, mirrored bulkhead, overhead mirror, marble shower w/seamless glass enclosure, nickel/gold plated fixtures, custom wallcovering & marble flooring w/granite keys

Twin Guest Stateroom

- Upper & lower berths w/custom spread
- Drawer storage below
- (2) Reading spotlights
- Cedar-lined hanging locker
- Private bath w/mahogany vanity, granite top, mirrored medicine cabinets, halogen lighting, granite shower w/seamless glass enclosure, mahogany crown molding, halogen lighting & Headhunter head

Crew Quarters

- Captain's and (2) Crew Cabins to accommodate up to (7) in crew
- Queen berth, drawer storage & cabinets, reading lights, halogen lighting & port light
- TV, stereo, cedar-lined locker
- Security alarm panel
- Private head w/corian vanity, mirrored medicine cabinet, custom wallcovering & full-size shower
- Crew Cabin w/ V-berths, drawer storage, reading lights, locker, access to crew head w/shower
- Crew/Engineer's Cabin, located aft off control station
- Over/under berths, reading lights, halogen lighting, hanging locker, drawer storage, TV, DVD player
- Private head w/stall shower

Pilothouse Equipment

- Stidd leather captain's chair
- Leather helm bench seat
- Large raised upholstered settee w/granite table
- Office/desk area w/Lenovo computer, NEC monitor, wireless keyboard, HP printer/fax/scanner
- (2) Full-size chart surfaces w/chart lights & drawer storage
- Upgraded 1" tempered glass windshield sections
- Windshield defrosters
- Steps up to flybridge

Pilothouse Electronics

- Furuno 2135 S Band 96-mile radar
- Furuno 2115 X band 96-mile radar
- (2) Furuno MU 190 HD screens
- (3) Furuno MU 150 HD screens

- Raytheon Pilotstar D Autopilot
- Furuno FCV1200L color sounder
- Furuno NX-300 Navtex receiver
- Furuno FA-150 Universal AIS
- (2) Furuno RD 33 information repeaters
- (2) Northstar 6100i GPS
- Sea 235 SSB
- Icom IC-M604 VHF
- Icom IC-M505 VHF
- (2) MTU EDM engine information display
- MTU/DDC controls are double w/sync capabilities
- Bow thruster control stick
- Touch Screen engine room blower controls
- Naiad Multisea 2000 stabilizer control
- PC Navigation system
- (2) Transas 4000 navigation systems
- Fleet Broadband 250 Sat Com
- WiFi receiver & transmitter
- Sea Tel 4006 V-Sat
- Thrane & Thrane Satellite phone
- (2) Carlisle & Finch searchlight control
- Kahlenberg M-511C/D horn control
- Exalto windshield wiper/washer control
- Panasonic KX-DT333 phone/intercom
- Bosch Divar CCTV System monitor w/4 cameras; (4) port, stbd, cockpit, engine room & (1) on mast Audio/Video Equipment:
- Crestron Kaleidescape Media system w/ (6) players K Server 5000
- Crestron Media controller system CNX-PAD8A

Flybridge Electronics

- Furuno GP7000F GPS/Chart
- Furuno RD33 information repeater
- (3) Furuno MU 150 HD screens
- Icom M604 VHF
- Anshutz Pilotstar autopilot
- MTU/DDC controls are double w/sync capabilities
- Bow thruster control
- Icom VHF
- (2) MTU EDM engine information displays
- (2) Carlisle & Finch searchlight control

Flybridge Equipment

- Full functional helm station
- (2) Wing stations w/jog stick, throttles, gear & bow thruster, port & stbd
- (3) Stidd helm chairs on raised for platform
- L-shaped seating w/storage below & triangular corian dining table
- Ultraline stainless steel grill w/propane tank storage below
- Built-in cabinetry for refrigerator & icemaker
- Custom fixed top with 3-sided enclosure
- Hinged radar arch
- Kaleidoscope music controls & outdoor speakers **Boat Deck:**
- Nautical Structures 8000lb hydraulic davit w/telescope, lift & 340 degree turn capability for aft, port & starboard deployment
- Removable flush mounted dinghy cradles
- Freshwater quick disconnect fitting
- Cushioned seating w/storage below
- Covered storage box below Novurania
- Quick deploy back down station for aft rail
- Removable hoop rails
- Access to aft deck stairs w/hinged hatch
- (2) Spare props, stored
- Spare gear leg for Novurania

Tenders

- 24' 5" Edgewater Center Console w/twin Yamaha 150 HP 4-stroke O/B
- 18' Novurania 530 DL w/new Yamaha 115 HP 4-stroke O/B
- (2) Kawasaki STX-15F jet skis

Aft Deck

- Teak decks
- Bar w/refrigerator & bottle storage
- Built-in bench seat dinette, table & teak chairs
- Air conditioning vent behind dinette
- Aft facing bar overlooking cockpit w/teak chairs
- Wing doors, port & stbd, accessing walk-around decks
- Flybridge access steps
- Dual stairs, port & stbd, to cockpit w/gates
- Docking station/boat controls w/pull out drawers, starboard side
- Storage lockers
- Kaleidscape music control

- Aft deck head w/vanity, sink, halogen lighting, Vacuflush head & air-conditioned

Cockpit Equipment

- Custom fighting chair, 130lb class w/offset
- Tackle centers w/cutting board
- Bait freezer
- Built-in deck fishbox
- Live bait well w/Lexan & lights
- Eskimo ice chipper discharge in fishbox
- Outriggers
- Rod holders
- Freeing ports w/covers
- Teak covering boards
- Transom tuna door w/gate
- Diesel & gas fueling hoses
- Maxwell VC 3500 warping winches
- Quartz lights
- Corner fair leads & cleats
- Lazarette access

Deck Equipment

- (2) Maxwell VWC 4500 hydraulic anchor windlass
- (2) Maxwell VC3500 aft warping capstans
- (2) Bruce Galvanized 330lb anchors
- (2) Anchor chain 492', 5/8" chain per side
- Nautical Structures 8000lb davit w/extension & 340 degree turn capability for launching aft, port & stbd
- Custom passerelle, manual & folding
- Swimming access through tuna door
- Gas and diesel fueling stations in cockpit
- Gas storage of 600 gallons is vented & monitored
- Aqualuma underwater lights
- Teak decks
- Custom overhead retractable rod holder storage, side decks
- Stainless steel rails & cleats
- High bulwarks
- Freeing ports
- Boarding gates, port & stbd
- Tide ride ladders
- Large sunpad w/cushions, forward

- Bow seating w/storage below
- Bosun lockers
- Storage for fire fighting equipment & fire hose
- Fuel ports
- Fresh water quick disconnects
- Compressed air quick disconnect
- (2) Maxwell VCW 4500 hydraulic windlasses
- (2) Bruce 330lb galvanized anchors
- Ship's bell Fire Fighting Equipment:
- Fixed FM-200 fire suppression system w/manual release
- Fixed FE241 automatic fire suppression system (in lazarette)
- (4) Hose Stations
- (2) Sabre Sigma II, self contained breathing apparatus
- Recorder voice alarms & horn alerts
- (28) Hand-held fire extinguishers
- (2) Fire fighting suits Safety Equipment:
- (2) 8-man life rafts
- (3) Life Rings
- (2) GME Auto GPS EPIRBs
- Sea Anchor/Drogue
- ACR Satellite EPIRB
- (3) ACR SART's
- (30) Solas Type 1 life jackets
- (8) Inflatable life jackets Medical Equipment:
- (2) Tanks of medical oxygen w/delivery system
- Headstart Defibrillator
- MCA Class A Medical Kit Hull:
- Awlcraft 2000 hull paint
- Deep prop pockets
- Airex composite coring
- Bottom paint
- (9) Aqualuma LED underwater lights
- Fiberglass over teak lower rub rails

Engineer/Control Room

- Desk w/laptop
- Bosch Divar CCTV monitor
- Systems monitor
- Atlas system
- Built-in Snap-on tool chest
- Laundry center w/Miele washer & dryer
- Work bench

- Dive locker for BC's
- Bauer Junior II dive compressor
- Watertight door to cockpit
- Watertight door to engine room
- Maritron ship security & Alarm panel
- Access to engineers cabin
- Pierelli rubber flooring

Electrical Equipment

- Twin Northern lights 65KW generators
- Port generator rebuilt @ 24,118 hours (31,150 total hrs)
- Starboard generator rebuilt @ 22,194 hours (28,450 total hrs)
- Triple Phase Atlas system
- (2) 100' shore power cords plus extensions
- (2) Trace inverters
- (12) 2v Gel cell batteries for house bank
- (4) 12v Gel cell batteries for start bank
- Maritron security & alarm system

Engine Room & Mechanical Equipment

- Twin MTU 16V-2000 M90, 1800HP - Installed new 2011
- 15-17 knots cruise @ 1950 RPM
- 19 knots max @ 2305 RPM
- 10 knots economical @ 1170 RPM, 3550 mile range
- 8 knots extended @ 850 RPM, 6000 mile range
- Twin Disc gears, transmissions rebuilt 2008/09
- (4) Marine Air chilled water
- (2) Village Marine 1200 GPD watermakers
- Naiad Multi-Sea 2000 stabilizers
- American hydraulic bow thruster
- Alfa Laval MIB 303 fuel purifier
- Sea Pro 511 fuel separator & filtration
- 400 gallon holding tank for black water
- 260 gallon tank for grey water
- 230 gallon lube oil tank
- 230 gallon waste oil tank
- Kobelt steering

Exclusions

- All owner's personal items & art work
- All crew's personal items
- Personal fishing & diving equipment

Исключения

При продаже яхты исключаются личные вещи владельца.

Отказ от ответственности

Компания предоставляет описание судна или яхты добросовестно, но не может гарантировать точность этой информации, а также не ручается за техническое состояние. Покупатель должен проинструктировать своих агентов или оценщиков исследовать представленную информацию более подробно, по собственному желанию. Продажа судна или яхты, изменение цены или снятие с продажи будет происходить без предварительного уведомления.

ФОТОГРАФИИ

Main Salon, Forward



Main Salon



Main Salon



Main Salon, Aft



Dining Area



Dining Area



Dining Area



Formal Dining



Galley



Galley



Galley



Galley Dinette



Pilothouse



Pilothouse Helm



Pilothouse Helm Station



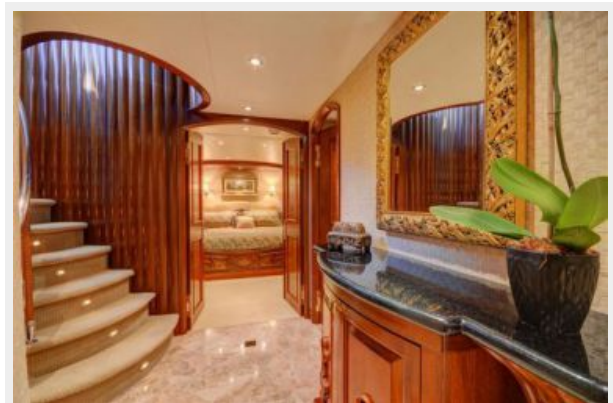
Pilothouse Chart



Pilothouse Settee



Lower Deck Foyer



Master Stateroom



Master Stateroom



Master Stateroom



Master Stateroom, Desk/Vanity



Master His & Her Bath



Master His & Her Bath



VIP Guest Stateroom



VIP Guest Bath



Queen Guest Stateroom



Guest Bath



Guest Stateroom



Flybridge Helm



Flybridge



Flybridge



Flybridge Settee



Flybridge Grill



Deck, Tenders



Deck, 24' EdgewaterTender



Forward Deck



Aft Deck



Aft Deck



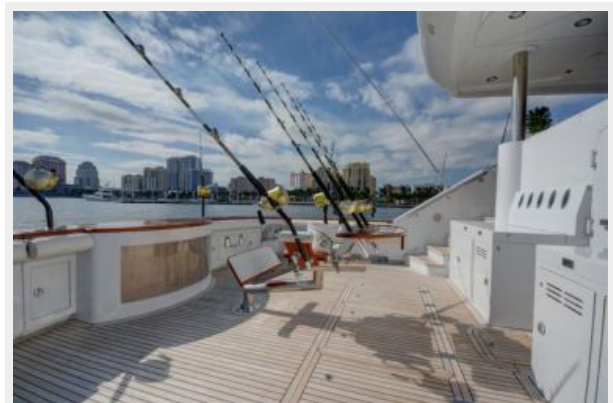
Aft Deck



Cockpit



Cockpit



Cockpit



Stern



Captain's Cabin



Crew Cabin



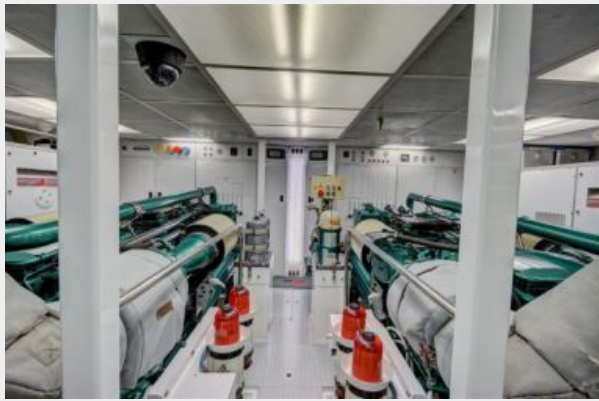
Engineer/Crew Cabin



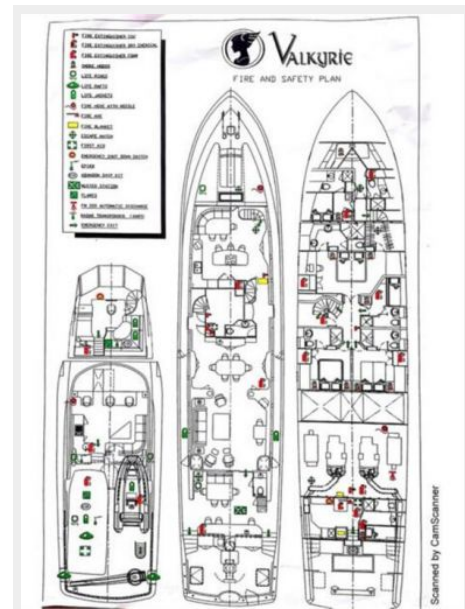
Engineer/Control Station



Engine Room



Layout



КОНТАКТЫ

Андрей Шестаков (Andrey Shestakov) – ведущий яхтенный брокер отдела продаж яхт и судов компании Shestakov Yacht Sales Inc. Официальный представитель Shestakov Yacht Sales Inc. для русскоговорящих клиентов в центральном офисе компании в Майами/Форт Лодердейл/Флорида/США.

Контактная информация

Email: andrey@shestakovyachtsales.com

Web: shestakovyachtsales.com

Телефоны

Краснодарский край: **+7(918)465-66-44**

США, Майами, Флорида: **+1(954)274-4435**

Время работы

Понедельник – Суббота: **9:00 - 21:00**
EDT

Воскресенье: **Закрето**

Адрес



Harbour Towne Marina, 850 NE 3rd St,
STE 213, Dania, FL 33004