

42FT 1990 CARVER 4207 AFT CABIN MOTOR YACHT — CARVER



Builder: CARVER

Year Built: 1990

Model: Motor Yacht

Price: PRICE ON APPLICATION

Location: United States

LOA: 42' 0" (12.80m)

Beam: 15' 0" (4.57m)

Max Draft: 3' 6" (1.07m)

Our experienced yacht broker, Andrey Shestakov, will help you choose and buy a yacht that best suits your needs. We have a wide variety of yachts available on our sale's list. We also work in close contact with all the big yacht manufacturers from all over the world.

If you would like to buy a yacht 42ft 1990 Carver 4207 Aft Cabin Motor Yacht — CARVER or would like help answering any questions concerning purchasing, selling or chartering a yacht, please call +1(954)274-4435

TABLE OF CONTENTS

| | |
|------------------------------|----|
| TABLE OF CONTENTS | 2 |
| SPECIFICATIONS | 3 |
| Basic Information | 3 |
| Dimensions | 3 |
| Speed, Capacities and Weight | 3 |
| Accommodations | 3 |
| Hull and Deck Information | 3 |
| Engine Information | 4 |
| DETAILED INFORMATION | 5 |
| Accommodations | 5 |
| Engines | 5 |
| Additional Information | 5 |
| Comments | 6 |
| Exclusions | 6 |
| Disclaimer | 6 |
| PHOTOS | 7 |
| CONTACTS | 19 |
| Contact details | 19 |
| Telephones | 19 |
| Office hours | 19 |
| Address | 19 |

SPECIFICATIONS

Basic Information

Category: Motor Yacht

Sub Category: Aft Cabin

Model Year: 1990

Year Built: 1990

Country: United States

Dimensions

LOA: 42' 0" (12.80m)

Beam: 15' 0" (4.57m)

Max Draft: 3' 6" (1.07m)

Clearance: 20' 0" (6.10m)

Speed, Capacities and Weight

Displacement: 23600 Pounds

Water Capacity: 170 Gallons

Holding Tank: 80 Gallons

Fuel Capacity: 400 Gallons

Accommodations

Total Cabins: 2

Total Heads: 2

Hull and Deck Information

Hull Material: Fiberglass

Engine Information

Engines: 2

Manufacturer: Cummins

Model: 5.9 Litre

Engine Type: Inboard

Fuel Type: Diesel

DETAILED INFORMATION

Accommodations

- Spacious 2 stateroom 2 head layout
- Huge 15 ft. beam
- U-shaped dinette opposite the galley seats 6
- The other version of the 4207 did not have the dinette
- Spacious teak trimmed salon with entertainment center and wet bar
- L-shaped sleeper sofa and salon chair
- Full service galley with a combination microwave/convection oven and double door refrigerator
- Large aft deck with deluxe wet bar, fridge and ice maker
- Lloyd Flanders wicker furniture on aft deck
- Wide side decks
- Large flybridge with bench seating forward of the helm
- Heads replaced in 2008

Engines

- 300 HP Cummins Diesels
- 1060 original hours
- The most immaculate engine room you will find
- Kohler generator
- Halon fire suppression system
- Engine synchronizers
- Dripless shafts
- Extra 4 blade props
- Lots of additional spare parts

Additional Information

- 9 ft. Boston Whaler included. (refurbished)
- VC offshore bottom paint (3 years old)
- Spur line cutters
- Upgraded sanitation hoses - no odors
- Raw and freshwater wash downs
- Sirius Satellite radio and CD player
- Central vacuum
- Screens for aft deck
- Custom spiral ladder to swim platform

- Stainless rail on upper deck
- 3 heat pumps each with digital control
- Bose speakers on flybridge

Comments

This 4207 has been very well maintained but has not seen much use over the past year.

Her owners planned to continue to use her extensively but health issues forced them to change plans.

With a little bit of elbow grease and TLC the exterior of the boat will shine right up.

The interior and engine room are in excellent condition.

The last bottom job was done 3 years ago and will most likely need to be done soon once the new owners take possession.

She has been in a covered slip since 1997 and her condition reflects it.

The 9 ft. Boston Whaler has been repainted and is in excellent condition.

Exclusions

Owner's personal belongings.

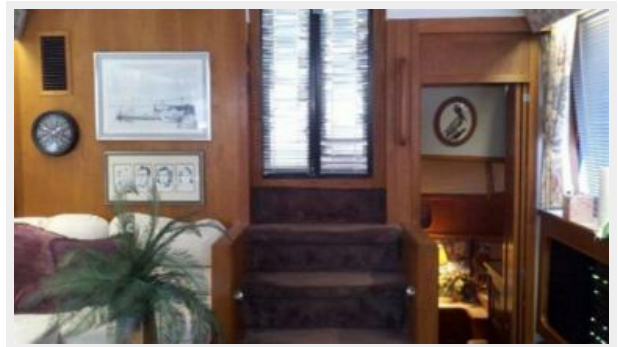
Disclaimer

The Company offers the details of this vessel or yacht in good faith but cannot guarantee or warrant the accuracy of this information nor warrant the condition of the vessel. A buyer should instruct his representatives, agents, or his surveyors, to investigate such details as the buyer desires validated. This vessel or yacht is offered subject to prior sale, price change, or withdrawal without notice.

PHOTOS





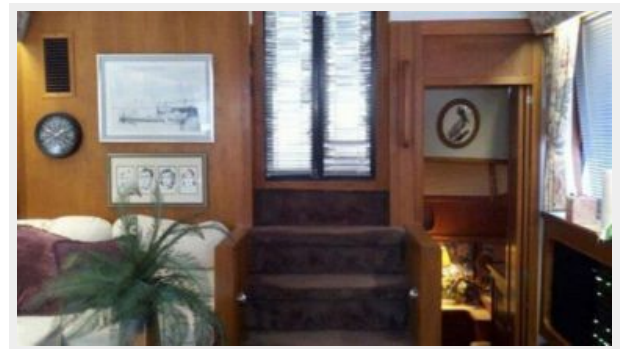




















CONTACTS

Andrey Shestakov, leading yacht broker of the sales department of Shestakov Yacht Sales Inc. Shestakov Yacht Sales Inc., the official representative of the Miami/Fort Lauderdale FL headquarters.

Contact details

Email: andrey@shestakovyachtsales.com

Web: shestakovyachtsales.com/en/

Telephones

USA: +1(954)274-4435

Office hours

Monday – Saturday: **9:00 - 21:00** EDT

Sunday: **closed**

Address



Harbour Towne Marina, 850 NE 3rd St,
STE 213, Dania, FL 33004