

ORSO 3 — BENETTI



Builder: BENETTI

Year Built: 2013

Model: Motor Yacht

Price: PRICE ON APPLICATION

Location: Italy

LOA: 108' 4" (33.02m)

Beam: 23' 7" (7.19m)

Min Draft: 6' 0" (1.83m)

Max Draft: 6' 4" (1.93m)

Cruise Speed: 13 Kts. (15 MPH)

Max Speed: 14 Kts. (16 MPH)

Our experienced yacht broker, Andrey Shestakov, will help you choose and buy a yacht that best suits your needs **ORSO 3 — BENETTI** from our catalogue. Presently, at Shestakov Yacht Sales Inc., we have a wide variety of yachts available on our sale's list. We also work in close contact with all the big yacht manufacturers from all over the world.

If you would like to buy a yacht **ORSO 3 — BENETTI** or would like help answering any questions concerning purchasing, selling or chartering a yacht, please call **+1(954)274-4435**

TABLE OF CONTENTS

TABLE OF CONTENTS	2
SPECIFICATIONS	3
Overview	3
Basic Information	3
Dimensions	3
Speed, Capacities and Weight	3
Accommodations	4
Hull and Deck Information	4
Engine Information	4
DETAILED INFORMATION	5
Mechanical	5
Electronics	5
Generators	5
Remarks	5
Exclusions	6
Disclaimer	6
PHOTOS	7
CONTACTS	14
Contact details	14
Telephones	14
Office hours	14
Address	14

SPECIFICATIONS

Overview

ORSO 3 is a highly customized Benetti Tradition that complies with MCA large commercial yacht code. While under construction the garage door was customized by Benetti to create a large beach when in the down position. The yacht's décor is in neutral tones throughout providing a casual and relaxed aura. The yacht also has a custom bar and over-sized dining table on the second deck that can be served by the adjacent pantry for either light meals or formal dining. The yacht has never been chartered. She has been winterized ashore and undercover at the Builders Shipyard in Livorno. The owners commissioned the boat from Benetti taking delivery in August 2013.

Basic Information

Category: Motor Yacht

Model Year: 2013

Year Built: 2013

Country: Italy

Vessel Top: Enclosed P.H. W/Sundeck

Dimensions

LOA: 108' 4" (33.02m)

LWL: 104' 3" (31.78m)

Beam: 23' 7" (7.19m)

Min Draft: 6' 0" (1.83m)

Max Draft: 6' 4" (1.93m)

Speed, Capacities and Weight

Cruise Speed: 13 Kts. (15 MPH)

Max Speed: 14 Kts. (16 MPH)

Displacement: 286600.9406 Pounds

Gross Tonnage: 160 Pounds

Water Capacity: 924.602182 Gallons

Holding Tank: 792.516156 Gallons

Fuel Capacity: 5679.699118 Gallons

Accommodations

Total Cabins: 5

Total Berths: 9

Sleeps: 12

Total Heads: 5

Crew Cabin: 3

Crew Berths: 6

Crew Sleeps: 6

Crew Heads: 3

Hull and Deck Information

Hull Material: GRP

Deck Material: Teak over Fiberglass

Hull Configuration: Full Displacement

Hull Color: White

Engine Information

Engines: 2

Manufacturer: Caterpillar

Model: C18

Engine Type: Inboard

Fuel Type: Diesel

DETAILED INFORMATION

Mechanical

MAIN ENGINES & EQUIPMENT 2X Caterpillar C18 747kw (1000bhp) @2300rpm 2X Kohler 50kw, 230AC 3ph, 50hz 1X Idromr Reverse Osmosis 320lt/hr (85USgals) Watermaker VT Naiad Hydraulic 40kw (54hp) bow thruster VT Naiad Hydraulic Stabilizers with Zero Speed Stabilization at anchor 2X ASEA AC25Q-3 Converters 1X ASEA AC18-3L Converter 1X Alfa Laval MIB 303 Fuel Cleaner 1X Haman HL-02 Slim Sewage Treatment System

Electronics

NAVIGATION 2X Furuno RSB-0072 Radars C Plath Jupiter Overhead Compass at Pilothouse Helm C Plath Riviera Compass at Fly Bridge Helm BCS ACT2000 Rudder Angle Indicator Furuno DFF1 Depth Sounder Navicontrol System Auto Pilot Marine Computer Displays with (2) Independent Navigation Systems Sailor Portable VHF Transas (Professional Marine) Furuno Nav-Net 3D Latest Generation (2014) Touchscreen/Multifunction displays PC with Transas and Navnet System Chart Plotter VHF DSC Furuno & Sailor Raymarine Night Vision Furuno AIS Furuno RD33 BNWAS Furuno NavNet display at both helms GMDSS Radar Transponder GEPIRB Furuno Navtex MF/HF Furuno (radiotelephony) Note*** There are two independent helm stations

Generators

2X Kohler 50kw, 230AC 3ph, 50hz Hours 900

Remarks

Galley is equipped with the latest Miele appliances. There is a 8 person Jacuzzi on the flybridge. At the bow on the main deck there is a Carbon Fiber Davit to launch/recover the Kawasaki STX15F Jet Ski. Two Kawasaki Super Jet Wave Runners with a launch/recover system are stored in the aft garage. There is also a Bauer Junior II Dive Compressor. **ORSO 3** has 22 color Ocean LED underwater lights that can be controlled by an iPhone via WiFi. She has an integrated Kaleidescape System for all on board A/V electronics. Each cabin and the main salon are equipped with Samsung Smart TVs (42", 32" or 23"). There are also two external Sunbrite 40" TV's (1 on Aft Deck & 1 on Bridge Deck). The yacht also has two KVH (7 & 9) Antennas for Internet, SAT Phone and SAT-TV (Sky Euro). **ORSO 3** is a HIGHLY CUSTOMIZED Benetti Tradition 105/108. The yacht can travel anywhere in the world and use the shore power provided by the 50hz - 60hz (110 - 220) converter. The yacht was built on the new 108 Tradition Supreme hull but has the deck layout of the 105 tradition. The owners made numerous upgrades in equipment as well as materials (stone, wood, leather and fabrics) to build this outstanding yacht.

Owner's desire to build a larger yacht is the reason why **ORSO 3** is currently offered for sale.

Exclusions

Owner's personal belongings.

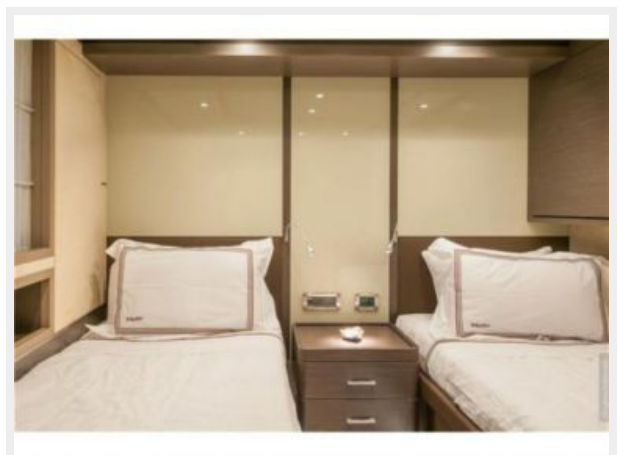
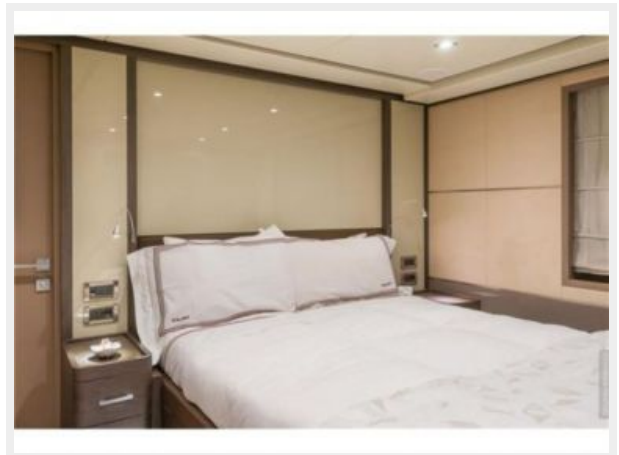
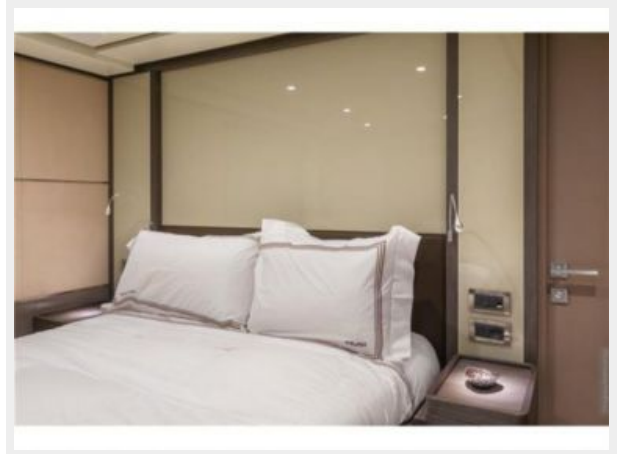
Disclaimer

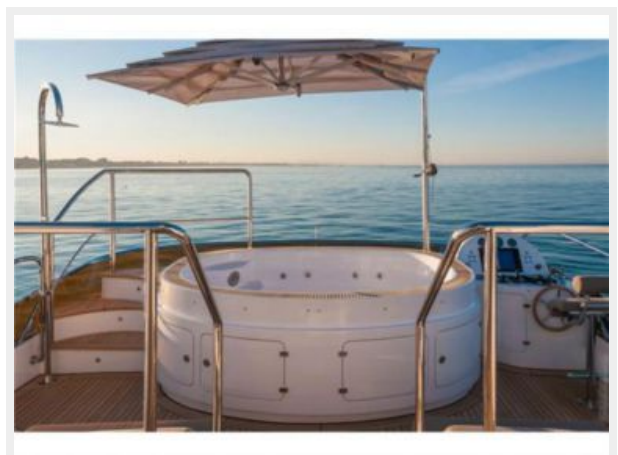
The Company offers the details of this vessel or yacht in good faith but cannot guarantee or warrant the accuracy of this information nor warrant the condition of the vessel. A buyer should instruct his representatives, agents, or his surveyors, to investigate such details as the buyer desires validated. This vessel or yacht is offered subject to prior sale, price change, or withdrawal without notice.

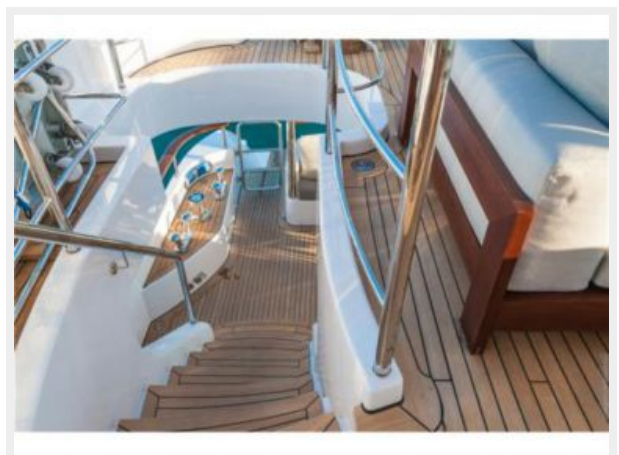
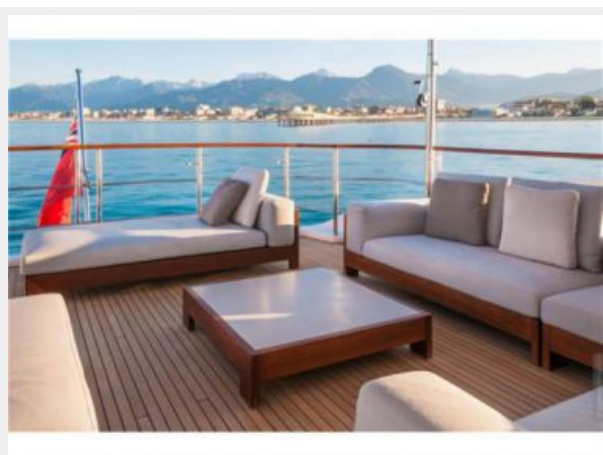
PHOTOS

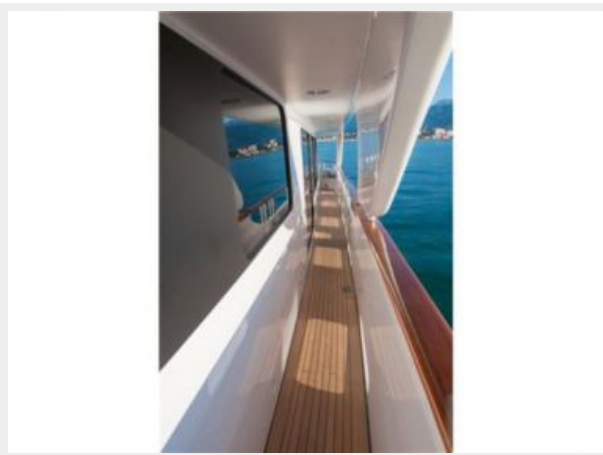


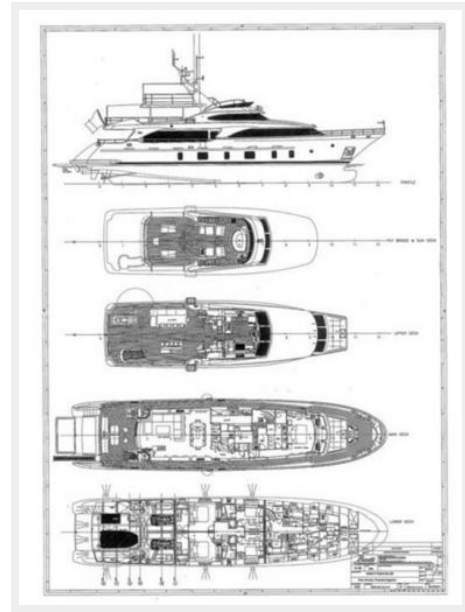












CONTACTS

Andrey Shestakov, leading yacht broker of the sales department of Shestakov Yacht Sales Inc. Shestakov Yacht Sales Inc., the official representative of the Miami/Fort Lauderdale FL headquarters.

Contact details

Email: andrey@shestakovyachtsales.com

Web: shestakovyachtsales.com/en/

Telephones

USA: +1(954)274-4435

Office hours

Monday – Saturday: **9:00 - 21:00** EDT

Sunday: **closed**

Address



Harbour Towne Marina, 850 NE 3rd St,
STE 213, Dania, FL 33004