

MTI V42 — MARINE TECHNOLOGY



Builder: MARINE TECHNOLOGY

Year Built: 2013

Model: High Performance

Price: PRICE ON APPLICATION

Location: United States

LOA: 42' 0" (12.80m)

Beam: 11' 6" (3.51m)

Cruise Speed: 47.79369331 Kts. (55 MPH)

Max Speed: 60.82833694 Kts. (70 MPH)

Our experienced yacht broker, Andrey Shestakov, will help you choose and buy a yacht that best suits your needs **MTI V42 — MARINE TECHNOLOGY** from our catalogue. Presently, at Shestakov Yacht Sales Inc., we have a wide variety of yachts available on our sale's list. We also work in close contact with all the big yacht manufacturers from all over the world.

If you would like to buy a yacht **MTI V42 — MARINE TECHNOLOGY** or would like help answering any questions concerning purchasing, selling or chartering a yacht, please call **+1(954)274-4435**

TABLE OF CONTENTS

TABLE OF CONTENTS	2
SPECIFICATIONS	3
Overview	3
Basic Information	3
Dimensions	3
Speed, Capacities and Weight	3
Accommodations	3
Hull and Deck Information	3
Engine Information	4
DETAILED INFORMATION	5
Description	5
Exclusions	7
Disclaimer	7
PHOTOS	8
CONTACTS	15
Contact details	15
Telephones	15
Office hours	15
Address	15

SPECIFICATIONS

Overview

Unique and highly praised new MTI boat, the V42 Center Console will bring you anywhere with any sea conditions at speeds that no other center console can beat! This perfect offshore and family entertainer is equipped with the latest electronics, and with all the options you can possibly imagine. We highly recommend any interested party to schedule an appointment asap before she is gone!

Basic Information

Category: High Performance

Model Year: 2013

Year Built: 2013

Country: United States

Dimensions

LOA: 42' 0" (12.80m)

Beam: 11' 6" (3.51m)

Speed, Capacities and Weight

Cruise Speed: 47.79369331 Kts. (55 MPH) **Max Speed:** 60.82833694 Kts. (70 MPH)

Displacement: 15000 Pounds

Fuel Capacity: 450 Gallons

Accommodations

Total Cabins: 1

Hull and Deck Information

Hull Material: Advanced Composites

Hull Configuration: Modified V-Hull

Engine Information

Engines: 4

Manufacturer: Mercury

Model: 300 Verado

Engine Type: Outboard

Fuel Type: Gas

DETAILED INFORMATION

Description

DESIGN

Unlike many builders, MTI-V took the time to get the bottom design fine tuned for the perfect blend of speed and cruising ability with flawless handling manners. This revolutionary “Slot V” design provides a ride that is far more advanced than other boats. So far that we took the time to Patent the design. The twin keels provide handling manners as if the boat was on rails. There is never any indication of sliding or hooking in a corner. The MTI-V 42 is not just a center console with Race Boat Construction. This new model offers the amenities and user friendliness that makes your time on the water more enjoyable. Our well developed list of options is a guide for configuring the perfect boat.. and if something is not on the list, we would certainly like to discuss the application.

Each boat is custom built for each individual client. Each client has their own definition of how the boat needs to work for their boating lifestyle. The MTI-V 42 offers our clients nearly endless options and possibilities. Several different seating configurations are offered as are cabin amenities that make the boat suitable for overnighting and long distance cruising. v-runningThe area above the central cabin has a front lounge that is one of the most comfortable seats on board. The design is such that you don't feel like you're going to fall or slide out while at cruising speed.

The unique hard top is large enough to not only cover those at the console, but also those riding in the second row of seats. The MTI-V42 offers six electric bolsters and different rear seating options to allow the boat to be configured as desired.

PERFORMANCES

The patented hull design offers a ride unlike anything else in the Vee Bottom world. The hull design utilizes twin keels, similar to a catamaran, yielding straight, stable, and predictable handling at all speeds. The step design also allows us to introduce air under the hull and trap a boundary layer air under the hull between the twin keels. The MTI-V 42 is extremely dry riding even in extreme conditions. The boat keeps its bow high in both head and following seas. The wide bow does an excellent job of knocking down big swells. The boat is large in size and ride (42') but it feels extremely agile and sporty. The patented hull design is very efficient, not just in top speed but also in fuel burn at cruise (40mph @ 39gph, more than 1 mpg with quad Mercury 300 Verados) . This efficient design coupled with a 450 gallon fuel capacity yields excellent fuel range.

LAMINATION

The MTI-V is not built like everyone else's center console... The MTI-V 42 is an Epoxy, Foam

Cored, and Post Cured, all built with true Vacuum Bagging processes. Very few other builders actually Vacuum Bag their entire laminate. Most only Vacuum Bag their core to the outer laminate. We Vacuum Bags the entire laminate and Foam core to achieve the proper Resin to Glass Ratios which provide strength and weight control. Excess resin does not make a boat stronger.

Only the finest materials are used throughout our lamination process. Epoxy Resin is used due to it's strength and longevity... Yes, Epoxy is not as easy to work with, takes more time to cure, and costs more than GP or Vinylester Resins... but this is no average boat.

E-Glass and Kevlar are the primary fabrics used. We also use Carbon Fiber on weight sensitive components, or even on the entire build if specified by our client. Strength comes from using the right materials with the right techniques in an engineered manner. The MTI-V 42 utilizes foam coring (no wood) in the hull bottom, sides, transom and stringers. Many other boats are built minimal or even without core in the bottom. The 42 has a cored bottom that is over 2" thick, and a transom in excess of 5" thick. MTI builds the MTI-V 42 like other builders may build a race boat. The cost of materials and labor are much higher with these techniques. This may sound excessive for a pleasure boat application. It is. The end result is a boat that is Lighter, Stronger, and Faster. The boat is so solid that it must be experienced to fully understand the difference.

EQUIPMENT

- Bow Thruster
- Dive Door
- Custom JL sound system
- Electric retractable pilot seat with leg support
- TDS system (Theft deterrent System by mercury allows you to track and shut down engines)
- Smart Craft latest generation
- Depth Finder
- GPS/Plotter
- VHF
- Electric opening for storage under front sunbed
- Electric front table retract for full subbed area
- Recessed Anchor and Locker
- Transom access door
- Fisher Panda Diesel generator with separate diesel tank
- Fuel separators
- Battery chargers
- Cabin inside console with:
 - fridge
 - retractable bed
 - toilets
- Electric panel

- Air Conditioning in cabin with climate control
- 50 Amp cord
-

ENGINES

- Quad Mercury Verados 300HP with 180 hrs
- Extended warranty till 2018

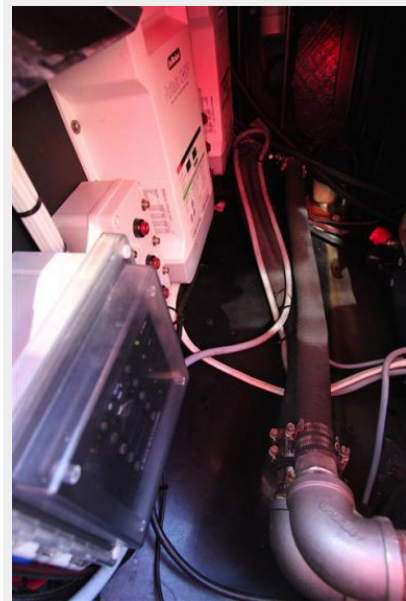
Exclusions

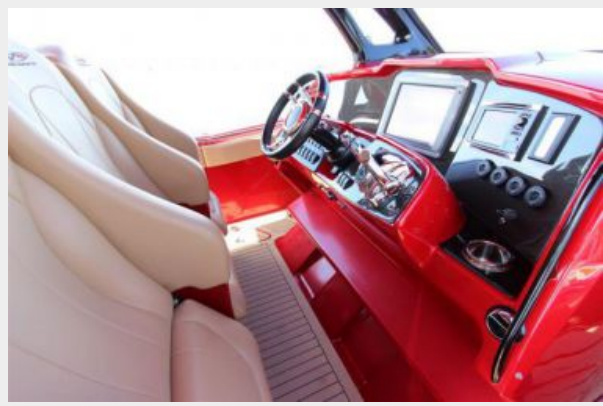
Owner's personal belongings.

Disclaimer

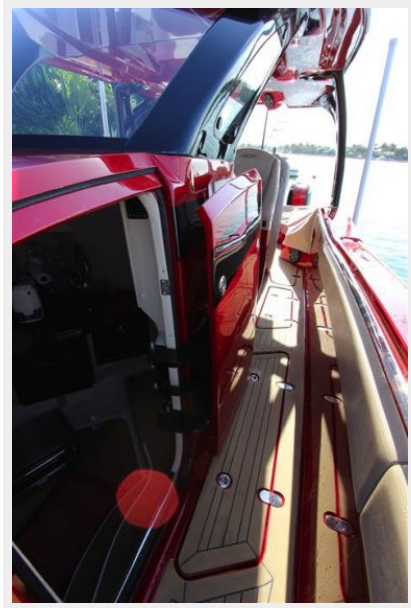
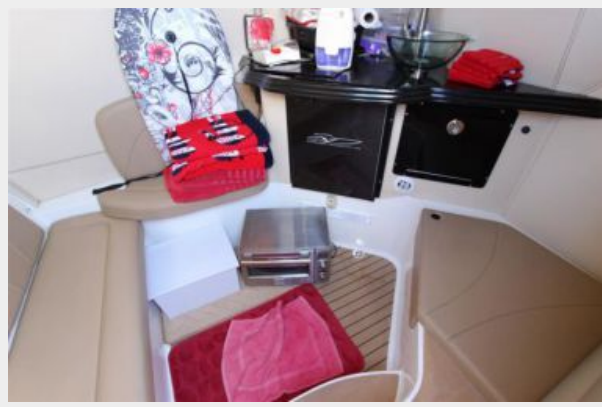
The Company offers the details of this vessel or yacht in good faith but cannot guarantee or warrant the accuracy of this information nor warrant the condition of the vessel. A buyer should instruct his representatives, agents, or his surveyors, to investigate such details as the buyer desires validated. This vessel or yacht is offered subject to prior sale, price change, or withdrawal without notice.

PHOTOS















CONTACTS

Andrey Shestakov, leading yacht broker of the sales department of Shestakov Yacht Sales Inc. Shestakov Yacht Sales Inc., the official representative of the Miami/Fort Lauderdale FL headquarters.

Contact details

Email: andrey@shestakovyachtsales.com

Web: shestakovyachtsales.com/en/

Telephones

USA: +1(954)274-4435

Office hours

Monday – Saturday: **9:00 - 21:00** EDT

Sunday: **closed**

Address



Harbour Towne Marina, 850 NE 3rd St,
STE 213, Dania, FL 33004