

8 LURES — LUHRS



Судостроитель: LUHRS

Год постройки: 2005

Модель: Катер для спортивной рыбалки

Цена: **ЦЕНА ЯХТЫ ПО ЗАПРОСУ**

Местонахождение: United States

Длина общая: 41' 0" (12.50m)

Ширина: 15' 9" (4.80m)

Мин. осадка: 3' 6" (1.07m)

Крейс. скорость: 25 Kts. (29 MPH)

Макс. скорость: 30 Kts. (35 MPH)

Купить 8 Lures — LUHRS а также выбрать подходящую вам яхту из нашего каталога яхт вам поможет опытный яхтенный брокер Андрей Шестаков. На сегодняшний день компания Shestakov Yacht Sales Inc. имеет большое количество яхт в собственном списке продаж, а также тесно сотрудничает со всеми крупными яхтенными производителями по всему миру.

Для того чтобы купить яхту 8 Lures — LUHRS а также проконсультироваться по любому вопросу связанному с покупкой, продажей, чартером яхт позвоните по телефону **+7(918)465-66-44**.

ОГЛАВЛЕНИЕ

ОГЛАВЛЕНИЕ	2
ХАРАКТЕРИСТИКИ	3
Обзор	3
Основная информация	8
Размеры	8
Скорость, вместимость и масса	8
Размещение	8
Корпус и палуба	8
Информация о двигателе	9
ФОТОГРАФИИ	10
КОНТАКТЫ	25
Контактная информация	25
Телефоны	25
Время работы	25
Адрес	25

ХАРАКТЕРИСТИКИ

Обзор

The 41' Convertible offers anglers and cruisers a lot of boat at a very competitive price. Heavily built on a modified-V hull with prop pockets, the super-wide 15'9" beam of the 41 Convertible results in the cockpit and cabin dimensions of a much larger boat. Her cherry wood interior features a spacious salon with a teak-and holly sole, full entertainment center, and Ultra leather sofa to starboard. A U-shaped galley with Corian counters, three-burner cook top, and convection oven is forward of the lounge. Washer/dryer unit installed in a salon cabinet. A large double-entry head with separate stall shower serves both staterooms. The 41's roomy 85-square-foot cockpit has two large fish boxes in the sole and two transom fish boxes. A tackle center is forward with livewell and sink, and a staircase to port leads up to a huge flybridge that ranks among the largest in her class. A factory hardtop was standard. Cummins 540hp diesels cruise 26 knots and reach around 30 knots wide open only 926 Hours. Death in Family forces sale.

Salon

- Bose 3.2.1 System and 26" Flat Panel TV
- Cherry Finish
- Custom Entertainment Center w/Bottle Storage
- Designer Sofa
- Designer Window Treatments and Fabrics
- Teak and Holly Floor
- Recessed Overhead Lighting
- 2 Custom Barrel Chairs
- Washer/Dryer Cabinet

Galley

- AC/DC Refrigerator & Freezer
- Ample Storage with Over and Under Counter Cabinets
- Built-In Stainless Steel Microwave/Convection Oven
- Cherry Finish
- Coffeemaker
- Corian Countertops
- Custom Stainless Steel Sink
- 3 Burner AC Stove w/Range Hood
- Teak and Holly Floor
- Recessed Lighting
- Side-by-Side, Dual Voltage
- Refrigerator/Freezer
- Trash Receptacle

- Water and Holding Tank Monitors

Master Stateroom

- Cedar-Lined Hanging Lockers
- Cedar-Lined Storage Bins Under Berth
- Cherry Finish
- Screen & Privacy Hatch
- Designer Fabrics, Bed Spread
- Island Queen Berth w/Innerspring Mattress
- Overhead Recessed Lighting
- Plush Carpeting
- Private, Directional Reading Lights Over Berth

Head

- Corian Covered Vanity
- Exhaust Fan
- Mirrored Medicine Cabinet
- Recessed Overhead Lights
- Separate Stand-Up Shower Stall
- Head with Macerator

Guest Stateroom

- Cedar-Lined Storage Bins
- Cherry Finish
- Double Berth w/Innerspring Mattress
- Reading Lights Over Berth
- Recessed Lighting

Electrical Systems

- Air Conditioning w/Reverse Cycle Heat
- AC/DC Interior Lighting System
- Batteries
- Battery Charger
- Battery for Electronics on Bridge
- Battery Switches
- Cablemaster
- Cable TV and Telephone Jacks
- Custom Electrical Panel w/Breaker
- Switches and Analog Readouts
- Custom Wire Harness and Color Coded Wiring Throughout
- Generator
- GFCI Protection Throughout

- Internal Bonding System w/Zinc Anode
- Shore Power 240V/50A Connection
- Shore Power Cord -50 ft.
- Windlass

Mechanical Systems

- AC Outlet in Engine Room
- Automatic Bilge Pumps (3)
- Automatic HighWater Alarm and High Capacity Pump
- Automatic Shower Sump Pump
- Bronze Thru-Hulls w/Seacocks
- Concealed Air Conditioning Vents
- Dripless Shaft Logs
- Electronic Shift and Throttle
- Engine Alarm System
- Fire Extinguishing System Engine Room
- Freshwater Cooling on Engines
- Freshwater Pump (Dual)
- Fuel/Water Separators
- Internal Sea Strainers
- Recessed Trim Tabs
- Shore Water Connection
- Water Heater (20 Gal)
- Welded Aluminum Fuel Tanks

Flybridge

- Bridge Walk Molded Stairway to Bridge
- Captain Chair & Helm Chair
- Compass
- Custom Hardtop w/Spreader and Interior Lights
- Custom Molded Fiberglass L-shaped Seat w/Recliner
- Electric Horn
- Electronic Engine Controls
- Navigation Lights
- Portside Jump Seat
- Raymarine VHF Radio w/8' Fiberglass Antenna & Chrome Antenna Ratchet
- Rocket Launchers (7) on Bridge
- Rod Storage for 10 Rods

Cockpit / Fishing Features

- Aluminum Plate Bonded into Cockpit Sole for Fighting Chair Installation

- Coaming Fender Storage
- Coaming Fishbox w/Overboard Drain
- Courtesy Lights
- 4 High Capacity Cockpit Drains
- Molded 37-Gallon Livewell w/High Capacity Pump
- Molded In-Deck Insulated Fishboxes w/Macerators
- Molded Prep Center w/Sink and Spray Hose, Pressurized Water and Cutting Board
- Raised Access Hatch to Engine Room
- Recessed Overhead Lights
- Rod Storage Under Sole
- Swim Steps on Transom
- Walk-Thru Transom Door w/Polished Stainless Steel Hardware
- Washdown Fresh Water
- Washdown Raw Water

Deck / Hull

- Aluminum Handrail Above Side Windows
- Anchor Well with Rope Locker
- Bow Pulpit with Anchor Roller
- Bomar Deck Hatch
- Diamond Non-Skid Walking Surfaces
- High Density Rub Rail w/Stainless Steel Insert
- Tempered and Tinted Safety Glass
- Welded, One-Piece Aluminum Bow Rail

Optional Equipment

- Bow Thruster
- Central Vacuum System
- Cockpit Freezer
- Raymarine Electronics Package
- 2 Raymarine E120 Chart plotters
- Raymarine VHF
- Raymarine Autopilot
- Bow Thruster
- Cockpit Controls and Thruster control
- Enclosure
- Flybridge Stereo
- TV 15" Flat Screen/DVD Guest Stateroom
- TV 15" Flat Screen/DVD Master Stateroom
- Interior Décor Option
- International Fontana Neutral
- Oil Changing System

- Spotlight
- Spreader Lights
- Washer & Dryer

The 41 Convertible offered anglers and cruisers a lot of boat at a very competitive price. Heavily built on a modified-V hull with prop pockets, the super-wide 15'9" beam of the 41 Convertible results in the cockpit and cabin dimensions of a much larger boat. Her cherrywood interior features a spacious salon with a teak-andholly sole, full entertainment center, and Ultraleather sofa to starboard that converts into a double berth at the push of a button. A U-shaped galley with Corian counters, three-burner cooktop, and convection oven is forward of the lounge.

Washer/dryer unit installed in a salon cabinet. A large double-entry head with separate stall shower serves both staterooms. The 41's roomy 85-square-foot cockpit has two large fish boxes in the sole and two transom fish boxes. A tackle center is forward with livewell and sink, and a staircase to port leads up to a huge flybridge that ranks among the largest in her class. A factory hardtop was standard. Cummins 580hp diesels cruise in the high 20s and reach around 30 knots wide open

The 41 Convertible offered anglers and cruisers a lot of boat at a very competitive price. Heavily built on a modified-V hull with prop pockets, the super-wide 15'9" beam of the 41 Convertible results in the cockpit and cabin dimensions of a much larger boat. Her cherrywood interior features a spacious salon with a teak-andholly sole, full entertainment center, and Ultraleather sofa to starboard that converts into a double berth at the push of a button. A U-shaped galley with Corian counters, three-burner cooktop, and convection oven is forward of the lounge. Washer/dryer unit installed in a salon cabinet. A large double-entry head with separate stall shower serves both staterooms. The 41's roomy 85-square-foot cockpit has two large fish boxes in the sole and two transom fish boxes. A tackle center is forward with livewell and sink, and a staircase to port leads up to a huge flybridge that ranks among the largest in her class. A factory hardtop was standard. Cummins 580hp diesels cruise in the high 20s and reach around 30 knots wide open

The 41 Convertible offered anglers and cruisers a lot of boat at a very competitive price. Heavily built on a modified-V hull with prop pockets, the super-wide 15'9" beam of the 41 Convertible results in the cockpit and cabin dimensions of a much larger boat. Her cherrywood interior features a spacious salon with a teak-andholly sole, full entertainment center, and Ultraleather sofa to starboard that converts into a double berth at the push of a button. A U-shaped galley with Corian counters, three-burner cooktop, and convection oven is forward of the lounge. Washer/dryer unit installed in a salon cabinet. A large double-entry head with separate stall shower serves both staterooms. The 41's roomy 85-square-foot cockpit has two large fish boxes in the sole and two transom fish boxes. A tackle center is forward with livewell and sink, and a staircase to port leads up to a huge flybridge that ranks among the largest in her class. A factory hardtop was standard. Cummins 580hp diesels cruise in the high 20s and reach around 30 knots wide open

Основная информация

Тип судна: Катер для спортивной рыбалки

Подкатегория: Convertible

Модельный год: 2005

Год постройки: 2005

Страна: United States

Верх: Hardtop

Открытая палуба мостика: Да

Кубрик: Да

Размеры

Длина общая: 41' 0" (12.50m)

Ширина: 15' 9" (4.80m)

Мин. осадка: 3' 6" (1.07m)

Скорость, вместимость и масса

Крейс. скорость: 25 Kts. (29 MPH)

Макс. скорость: 30 Kts. (35 MPH)

Водоизмещение: 33000 Pounds

Вместимость воды: 130 Gallons

Вместимость сточного бака: 40 Gallons

Объем топливного бака: 600 Gallons

Размещение

Всего кают: 2

Всего коек: 4

Спальные места: 6

Всего ком. состава: 1

Корпус и палуба

Материал корпуса: Composite Fiberglass

Комплектация корпуса: Modified V-Hull

Информация о двигателе

Двигатели: 2

Производитель: Cummins

Модель: QSM 11

Тип двигателя: Inboard

Тип топлива: Diesel

ФОТОГРАФИИ



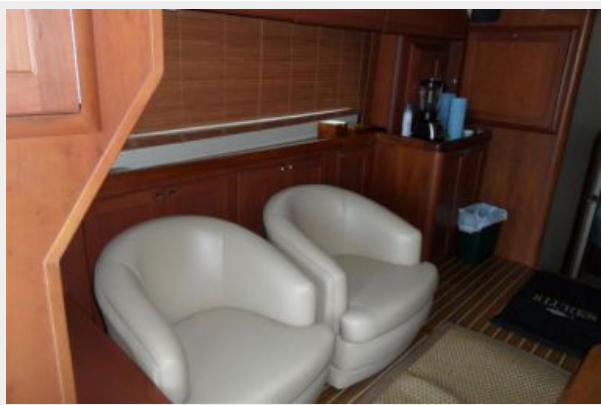
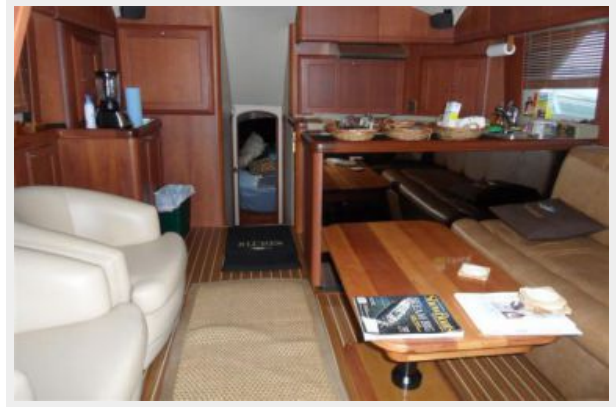








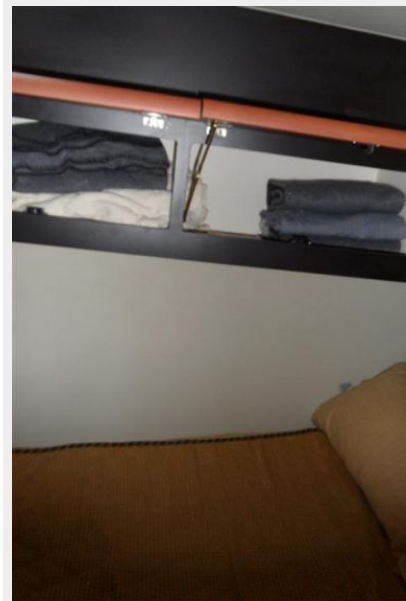


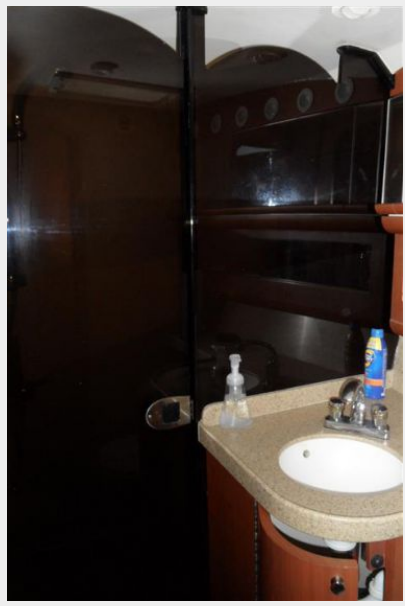




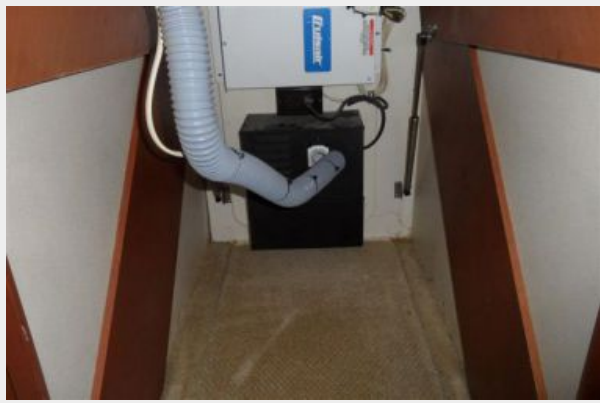














КОНТАКТЫ

Андрей Шестаков (Andrey Shestakov) – ведущий яхтенный брокер отдела продаж яхт и судов компании Shestakov Yacht Sales Inc. Официальный представитель Shestakov Yacht Sales Inc. для русскоговорящих клиентов в центральном офисе компании в Майами/Форт Лодердейл/Флорида/США.

Контактная информация

Email: andrey@shestakovyachtsales.com

Web: shestakovyachtsales.com

Телефоны

Краснодарский край: **+7(918)465-66-44**

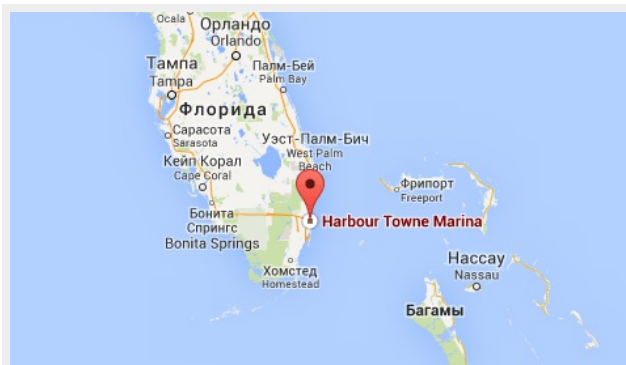
США, Майами, Флорида: **+1(954)274-4435**

Время работы

Понедельник – Суббота: **9:00 - 21:00**
EDT

Воскресенье: **Закрето**

Адрес



Harbour Towne Marina, 850 NE 3rd St,
STE 213, Dania, FL 33004