

41FT 1998 SILVERTON 41 CONVERTIBLE — SILVERTON



Builder: SILVERTON

Year Built: 1998

Model: Sport Fisherman

Price: PRICE ON APPLICATION

Location: United States

LOA: 41' 0" (12.50m)

Beam: 14' 11" (4.55m)

Max Draft: 3' 7" (1.09m)

Our experienced yacht broker, Andrey Shestakov, will help you choose and buy a yacht that best suits your needs 41ft 1998 Silverton 41 Convertible — SILVERTON from our catalogue. Presently, at Shestakov Yacht Sales Inc., we have a wide variety of yachts available on our sale's list. We also work in close contact with all the big yacht manufacturers from all over the world.

If you would like to buy a yacht 41ft 1998 Silverton 41 Convertible — SILVERTON or would like help answering any questions concerning purchasing, selling or chartering a yacht, please call +1(954)274-4435

TABLE OF CONTENTS

TABLE OF CONTENTS	2
SPECIFICATIONS	5
Basic Information	5
Dimensions	5
Speed, Capacities and Weight	5
Accommodations	5
Hull and Deck Information	5
Engine Information	6
DETAILED INFORMATION	7
Manufacturer Provided Description	7
Vessel Walk Thru	7
Deck	7
Electronics	7
Aft Cockpit	7
Fly Bridge	8
Galley	8
SALON	8
Master Stateroom and Head Compartment	8
Exclusions	8
Disclaimer	8
PHOTOS	10
Aft Cockpit 41 Silverton	10
Manufacturer Provided Image	10
41 Silverton Convertible big cockpit	10
Fly Bridge fixed Bimini top	10
41 Silverton aft cockpit covered	10
41 Silverton Convertable fly bridge	10
41 Silverton Convetable fly bridge	11

41 Silverton Electronics	11
41 Silverton	11
41 Silverton helm seats	11
41 Silverton	11
2008 A/B Tender with 40Hp Evinrude E-tec	11
A/B tender port side	12
A/B tender starboard side	12
2008 A/B Tender starboard side	12
Tender dash with GPS	12
41 Silverton	12
41 Silverton master	12
41 Silverton guest	13
41 Silverton master	13
41 Silverton Salon starboard side	13
41 Silverton Salon starboard side	13
41 Silverton salon	13
41 Silverton entrance	13
41 Silverton full Galley	14
41 Silverton dinette	14
41 Silverton	14
9KW Kohler	14
3126 Cats 420hp	15
3126 Cats 420hp	15
Shaft seals	15
Manufacturer Provided Image	15
CONTACTS	16
Contact details	16
Telephones	16
Office hours	16

Address

16

SPECIFICATIONS

Basic Information

Category: Sport Fisherman

Sub Category: Convertible

Model Year: 1998

Year Built: 1998

Country: United States

Dimensions

LOA: 41' 0" (12.50m)

Beam: 14' 11" (4.55m)

Max Draft: 3' 7" (1.09m)

Clearance: 19' 7" (5.97m)

Speed, Capacities and Weight

Displacement: 24975 Pounds

Water Capacity: 200 Gallons

Holding Tank: 60 Gallons

Fuel Capacity: 524 Gallons

Accommodations

Total Cabins: 2

Total Berths: 9

Total Heads: 1

Hull and Deck Information

Hull Material: Fiberglass

Engine Information

Engines: 2

Manufacturer: Caterpillar

Model: 3126

Engine Type: Inboard

Fuel Type: Diesel

DETAILED INFORMATION

Manufacturer Provided Description

This 41 Silverton Convertible starts by combining the finest designs with the best of modern engineering and manufacturing methods. There are no short cuts. Every inch of the 41's fiberglass hull is hand-laid. Every material is the best. Intelligent utilization of techniques like modular design, standardization, just-in time manufacturing, and economies of scale allow Silverton to lower costs without cutting corners. It also allows Silverton to offer Marine Pac, the largest collection of standard features and amenities in the industry - features you'd expect to find on larger, more expensive yachts. They include luxuries and necessities like swim platforms, trim tabs, bow pulpits, microwaves, anchors, and boat hooks. In addition to the standard features, Silverton keeps boating safety in mind.

Vessel Walk Thru

The master stateroom for the 41 is located forward and has a centerline queen berth. There is ample storage including drawer and hanging space. Adjoining on starboard is a head compartment with access from the master or the companionway. Across on port is a traditional over/under two berth stateroom. Next aft on port is a fully equipped galley with a huge dinette on starboard. The salon is open and airy with an Ultra Suede convertible couch and matching barrel chair. A slider opens to the versatile cockpit great for cruising or fishing

Deck

Simpson Lawrence windlass (200' chain & 50' rode), 800 LB davit with custom UMTchocks for tender, Glass windscreen mesh & Sunbrella® covers. Fiberglass Swim platform .

Dual 30 amp shore service cords, 9 KW Kohler generator

Electronics

Raymarine RL 80 C Pathfinder 72 Mile Radar, Garmin model 4208 color GPS Map (8" screen), Raytheon ST 7000 auto pilot, Raytheon V850 color echo sounder, Raytheon NAV 398 GPS, Standard Horizon Matrix VHF radio with distress feature, Standard Horizon GX3000S VHF with distress and Hailer feature. Additional RAM Mic for VHF in Salon, Raymarine ST 60+depth and speed gauges. Glendinning synchronizer.KVH M3 satellite TV system (requires activation).

Aft Cockpit

Cockpit controls with Raytheon ST 6000+ Auto Pilot, Swim door, Swim platform, (newer) Aft

cockpit sunshade, (newer) Coaming cushions, Fresh & salt water wash down, Cockpit sink, Dockside telephone & cable TV connections, Guest model 630A Class B EPIRB. "Nassau"

Fly Bridge

Half tower, Dual trumpet horns, Isinglass enclosure, Dash cover, (2) Helm Chairs with thick padded cushions, arm rests & covers, (2) duplex electrical outlets, 12 V receptacle, Sea Star hydraulic steering, Jensen stereo with CD player, Sea Fire automatic fire extinguishing system, Dash controls for windlass.

Galley

Corian® countertops, Magic Chef microwave, Princess 2 burner electric cook top, Norcold full-sized refrigerator / freezer. Plenty of storage for all your needs

SALON

Ultra leather matching sofa bed & barrel chair, Corian® trimmed cocktail table, U-line icemaker, 22" VIZIO flat screen TV, SONY DVD and VHS player, Overhead rod racks, RCA 5 Disc CD player, & FM stereo, 18,000 BTU Marine air conditioning with reverse cycle heat and digital controller, Custom privacy blinds for cabin entrance door, Electrical distribution panel with water & waste tank indicator.

Note: Window Treatments redone 2012.

Master Stateroom and Head Compartment

Queen bed, (newer) 16,000 BTU Marine Air Conditioning with reverse cycle heat & digital controller, 18" VIZIO flat screen TV with DVD player

(Newer) Sea Land model 8100 Electric Fresh Water Toilet with holding tank & overboard discharge feature, Glass enclosed stall shower, Mirrored storage cabinets.

Exclusions

Owner's personal belongings.

Disclaimer

The Company offers the details of this vessel or yacht in good faith but cannot guarantee or

warrant the accuracy of this information nor warrant the condition of the vessel. A buyer should instruct his representatives, agents, or his surveyors, to investigate such details as the buyer desires validated. This vessel or yacht is offered subject to prior sale, price change, or withdrawal without notice.

PHOTOS

Manufacturer Provided Image



Aft Cockpit 41 Silverton



41 Silverton Convertible big cockpit



Fly Bridge fixed Bimini top



41 Silverton aft cockpit covered



41 Silverton Convertable fly bridge



41 Silverton Convertible fly bridge



41 Silverton Electronics



41 Silverton

41 Silverton helm seats



41 Silverton



2008 A/B Tender with 40Hp Evinrude E-tec



A/B tender port side



A/B tender starboard side



2008 A/B Tender starboard side



Tender dash with GPS



41 Silverton



41 Silverton master



41 Silverton master



41 Silverton guest



41 Silverton Salon starboard side



41 Silverton Salon starboard side



41 Silverton salon

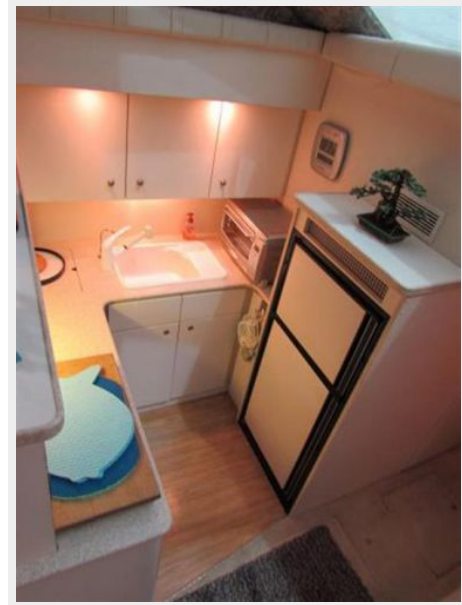
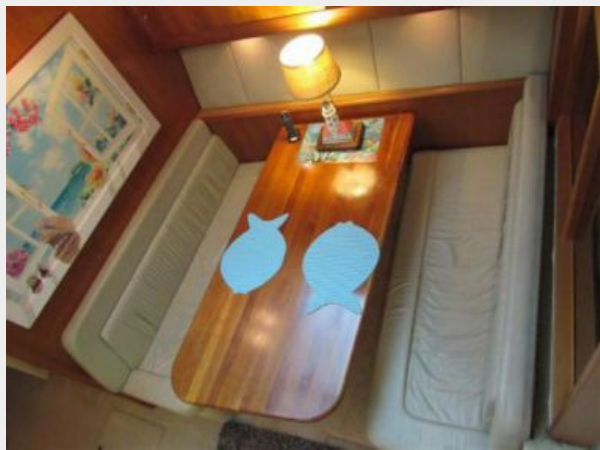


41 Silverton entrance



41 Silverton full Galley

41 Silverton dinette



41 Silverton



9KW Kohler



3126 Cats 420hp



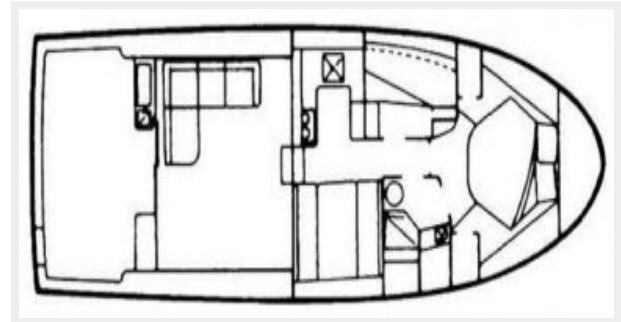
3126 Cats 420hp



Shaft seals



Manufacturer Provided Image



CONTACTS

Andrey Shestakov, leading yacht broker of the sales department of Shestakov Yacht Sales Inc. Shestakov Yacht Sales Inc., the official representative of the Miami/Fort Lauderdale FL headquarters.

Contact details

Email: andrey@shestakovyachtsales.com

Web: shestakovyachtsales.com/en/

Telephones

USA: +1(954)274-4435

Office hours

Monday – Saturday: **9:00 - 21:00** EDT

Sunday: **closed**

Address



Harbour Towne Marina, 850 NE 3rd St,
STE 213, Dania, FL 33004