

JUBILEE — HATTERAS



Builder: HATTERAS

Year Built: 2004

Model: Sport Fisherman

Price: PRICE ON APPLICATION

Location: United States

LOA: 54' 0" (16.46m)

Beam: 17' 3" (5.26m)

Max Draft: 4' 2" (1.27m)

Cruise Speed: 25 Kts. (29 MPH)

Max Speed: 30 Kts. (35 MPH)

Our experienced yacht broker, Andrey Shestakov, will help you choose and buy a yacht that best suits your needs **JUBILEE — HATTERAS** from our catalogue. Presently, at Shestakov Yacht Sales Inc., we have a wide variety of yachts available on our sale's list. We also work in close contact with all the big yacht manufacturers from all over the world.

If you would like to buy a yacht **JUBILEE — HATTERAS** or would like help answering any questions concerning purchasing, selling or chartering a yacht, please call **+1(954)274-4435**

TABLE OF CONTENTS

TABLE OF CONTENTS	2
SPECIFICATIONS	3
Basic Information	3
Dimensions	3
Speed, Capacities and Weight	3
Accommodations	3
Hull and Deck Information	3
Engine Information	4
DETAILED INFORMATION	5
Manufacturer Provided Description	5
Exclusions	5
Disclaimer	5
PHOTOS	6
CONTACTS	11
Contact details	11
Telephones	11
Office hours	11
Address	11

SPECIFICATIONS

Basic Information

Category: Sport Fisherman

Sub Category: Convertible

Model Year: 2004

Year Built: 2004

Country: United States

Dimensions

LOA: 54' 0" (16.46m)

LWL: 46' 0" (14.02m)

Beam: 17' 3" (5.26m)

Max Draft: 4' 2" (1.27m)

Speed, Capacities and Weight

Cruise Speed: 25 Kts. (29 MPH)

Cruise Speed RPM: 1950 Kts.

Max Speed: 30 Kts. (35 MPH)

Max Speed RPM: 2200 Kts.

Displacement: 75000 Pounds

Water Capacity: 192 Gallons

Holding Tank: 91 Gallons

Fuel Capacity: 1250 Gallons

Accommodations

Total Cabins: 3

Total Berths: 4

Total Heads: 2

Hull and Deck Information

Hull Material: Fiberglass

Engine Information

Engines: 2

Manufacturer: Caterpillar

Model: c-18

Engine Type: Inboard

Fuel Type: Diesel

DETAILED INFORMATION

Manufacturer Provided Description

The Hatteras 54 Convertible is designed specifically to deliver a smooth ride and excellent handling while operating at high speed. The convexity in the hull bottom helps make this hull immensely strong. The slight outward curvature (viewed from keel to chine) reduces impact accelerations and contributes to an incredibly smooth head-sea ride. The 54 is designed for serious sportfishing. The cockpit boasts a bait and tackle center with sink, cutting board and tackle drawers; a bait freezer; storage console with drawers, four rod holders; a removable, full-size in-deck fish box with macerator and an amply proportioned transom door. Inside, the salon/galley provides an L-shaped sofa and entertainment center. The entertainment center features a TV, AM/FM surround sound stereo receiver with DVD/CD player and VCR. The fully equipped galley offers natural wood cabinets, four-burner cooktop, garbage disposal and sub-zero style freezer and refrigerator drawer units. The microwave/convection oven is cleverly concealed by the cabinet door. This handsome galley is also practical ? the Amitco vinyl strip flooring resembles teak but is almost effortless to maintain. Galley storage is awesome with six exceptionally deep drawers. The chart flat area provides additional storage and is easily accessed via two cleverly designed deep drawers in the aft galley backsplash. Convenient, eye-level bulkhead access to this area offers even more storage opportunities within easy reach of the galley and dinette. The master stateroom features a queen berth with cedar-lined storage underneath, air conditioning disbursement through fluted wood valances for uniform comfort, and a concealed pocket access door for privacy. The entertainment center includes an LCD screen TV and AM/FM stereo receiver and CD player. Satellite TV receiver. The private master head includes a stall shower with seat, solid surface countertops, and easy-care Amtico vinyl strip flooring.

Exclusions

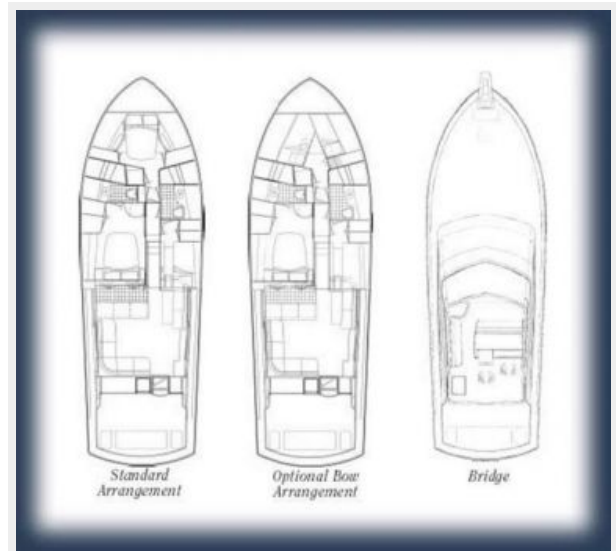
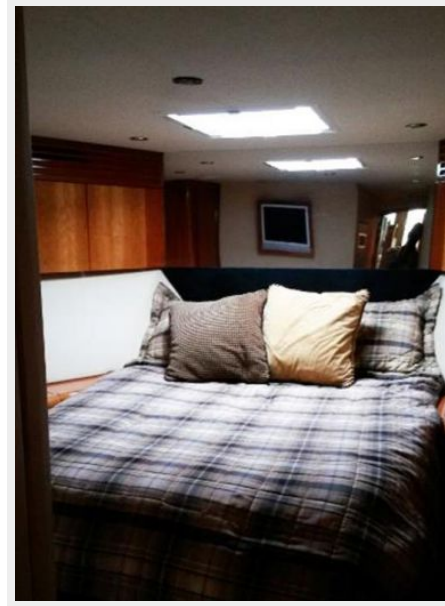
Owner's personal belongings.

Disclaimer

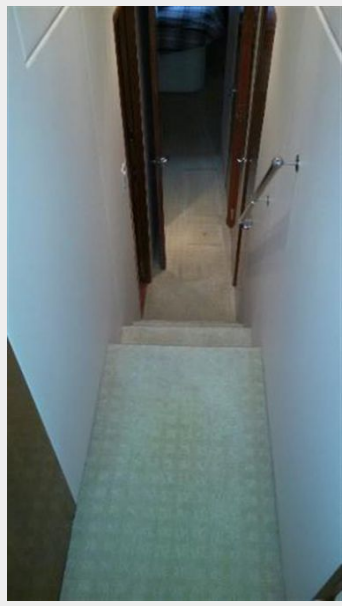
The Company offers the details of this vessel or yacht in good faith but cannot guarantee or warrant the accuracy of this information nor warrant the condition of the vessel. A buyer should instruct his representatives, agents, or his surveyors, to investigate such details as the buyer desires validated. This vessel or yacht is offered subject to prior sale, price change, or withdrawal without notice.

PHOTOS











CONTACTS

Andrey Shestakov, leading yacht broker of the sales department of Shestakov Yacht Sales Inc. Shestakov Yacht Sales Inc., the official representative of the Miami/Fort Lauderdale FL headquarters.

Contact details

Email: andrey@shestakovyachtsales.com

Web: shestakovyachtsales.com/en/

Telephones

USA: +1(954)274-4435

Office hours

Monday – Saturday: **9:00 - 21:00** EDT

Sunday: **closed**

Address



Harbour Towne Marina, 850 NE 3rd St,
STE 213, Dania, FL 33004