

TYNIHAN — SEA RAY



Builder: [SEA RAY](#)

Year Built: 2001

Model: Cruiser

Price: PRICE ON APPLICATION

Location: United States

LOA: 28' 0" (8.53m)

Beam: 9' 5" (2.87m)

Min Draft: 1' 10" (0.56m)

Max Draft: 3' 3" (0.99m)

Cruise Speed: 27 Kts. (31 MPH)

Max Speed: 38 Kts. (44 MPH)

Our experienced yacht broker, Andrey Shestakov, will help you choose and buy a yacht that best suits your needs **TYNIHAN — SEA RAY** from our catalogue. Presently, at Shestakov Yacht Sales Inc., we have a wide variety of yachts available on our sale's list. We also work in close contact with all the big yacht manufacturers from all over the world.

If you would like to buy a yacht **TYNIHAN — SEA RAY** or would like help answering any questions concerning purchasing, selling or chartering a yacht, please call **+1(954)274-4435**

TABLE OF CONTENTS

TABLE OF CONTENTS	2
SPECIFICATIONS	4
Basic Information	4
Dimensions	4
Speed, Capacities and Weight	4
Accommodations	4
Hull and Deck Information	4
Engine Information	5
DETAILED INFORMATION	6
OVERVIEW	6
ACCOMMODATIONS	6
GALLEY	6
Electronics	6
ELECTRICAL	7
MECHANICAL EQUIPMENT	7
HULL & DECK	7
Additional Description	7
Exclusions	8
Disclaimer	8
PHOTOS	9
Helm	9
Starboard Stern	9
Helm Instruments	9
Garmin 540 GPS/Chartplotter	9
Cockpit Aft	9
Cockpit Forward	9
Control Panel	10
Cockpit Wetbar	10

Dinette	10
Port Salon / Dinette	10
Forward Compartment	11
Salon Starboard	11
Galley	11
Flat Screen / DVD	11
Reverse Cycle A/C Control	12
Head/Shower	12
Aft Cabin	12
Twin 210 hp 4.3L Mercruiser Vortec Engines	12
5KW Kohler Genset	13
Battery Bank	13
Alpha One Counter-Rotating Stern Drives	13
Stern Drives	13
Manufacturer Provided Image	13
Vessel Layout	13
CONTACTS	14
Contact details	14
Telephones	14
Office hours	14
Address	14

SPECIFICATIONS

Basic Information

Category: Cruiser

Sub Category: Express

Model Year: 2001

Year Built: 2001

Country: United States

Vessel Top: Arch

Cockpit: Yes

Dimensions

LOA: 28' 0" (8.53m)

Beam: 9' 5" (2.87m)

Min Draft: 1' 10" (0.56m)

Max Draft: 3' 3" (0.99m)

Speed, Capacities and Weight

Cruise Speed: 27 Kts. (31 MPH)

Max Speed: 38 Kts. (44 MPH)

Displacement: 8630 Pounds

Water Capacity: 28 Gallons

Holding Tank: 28 Gallons

Fuel Capacity: 100 Gallons

Accommodations

Total Cabins: 2

Sleeps: 4

Total Heads: 1

Hull and Deck Information

Hull Material: Fiberglass

Hull Color: WHITE

Hull Designer: SEA RAY

Engine Information

Engines: 2

Manufacturer: Mercruiser

Model: 4.3L VORTEC V-6

Engine Type: I/O

Fuel Type: Gas

DETAILED INFORMATION

OVERVIEW

Those looking for a small mid-cabin cruiser will find a lot to like in the 2001 Sea Ray 280 Sundancer. The styling is crisp and the interior makes the most out of available space with berths for four adults (and two kids), decent headroom, a full galley, and a V-berth that converts into a second dinette.

Built on a deep-V hull with a moderate beam and an integrated swim platform, the Sundancer's curved radar arch is an appealing design touch that's showing up on a good many express boats these days. The single-level cockpit is arranged with a sun pad opposite the helm, an aft-facing bench seat, wet bar, and a retractable rear bench seat that folds up into the transom when it's necessary to get into the engine compartment. A large storage locker is built into the transom, and molded steps at the helm provide easy access to the walk-through windshield.

Powered by twin 210HP MerCruiser 4.3L Vortec V-6 (460 hours) with counter rotating sterndrives and Mirage SS three blade props. The 280 Sundancer will comfortably cruise in the 20s with top speed approaching 40 knots.

ACCOMMODATIONS

Cherry interior , Sleeps 6 total with in two berths, (2) in the Forward V-Berth which converts to a second dinette, (2) in the Aft sleeping compartment plus (2) on the convertible dinette.

- *Cruiseair Air Conditioning*
- *Vac-U-Flush Head*

GALLEY

- *Norcold Refrigerator*
- *Kenyon 2 Burner Electric Stove*
- *Panasonic Microwave Oven*
- *Pressure Hot and cold Water*

Electronics

Garmin 540 GPS/Plotter

- **Compass**
- **VHF Radio**
- **Digital Depth**
- **NEW Flat Screen TV**
- **NEW AM/FM/CD w/ iPod player**

ELECTRICAL

Kohler 5KW Generator W/Remote Start

- **Dual 30 amp Shore Power**
- **Pro Mariner Battery Charger**
- **Parallel start**
- **Battery Isolators**
- **Battery Switches**

MECHANICAL EQUIPMENT

- **Twin 4.3L Mercruisers w/ < 500 hours**
- **NEW Brass Manifolds & Risers 2014**
- **Engines and Generator recently serviced 2014**
- **New helm instrument gauges**
- **Bennett Trim Tabs**
- **Power Steering**
- **Power Tilt and Trim**

HULL & DECK

- **Lofrains Windlass**
- **Remote spotlight**
- **Canvass Pkg**
- **Camper Canvass**
- **Radar Arch**
- **Transom Door**
- **Swim Platform**
- **Swim Ladder**
- **Cockpit Carpet**
- **Cockpit Table**

Additional Description

The 2001 Sea Ray 280 Sundancer is beautiful, sleek and comfortable. With room to sleep six, she's just right for families who hate to leave the water when darkness falls.

She is powered by Twin 210HP 4.3 Mercruiser Vortec V-6 engines with counter-rotating

stern drives and Mirage SS three blade props.

Exclusions

Owner's personal belongings.

Disclaimer

The Company offers the details of this vessel or yacht in good faith but cannot guarantee or warrant the accuracy of this information nor warrant the condition of the vessel. A buyer should instruct his representatives, agents, or his surveyors, to investigate such details as the buyer desires validated. This vessel or yacht is offered subject to prior sale, price change, or withdrawal without notice.

PHOTOS

Starboard Stern



Helm



Helm Instruments



Garmin 540 GPS/Chartplotter



Cockpit Forward



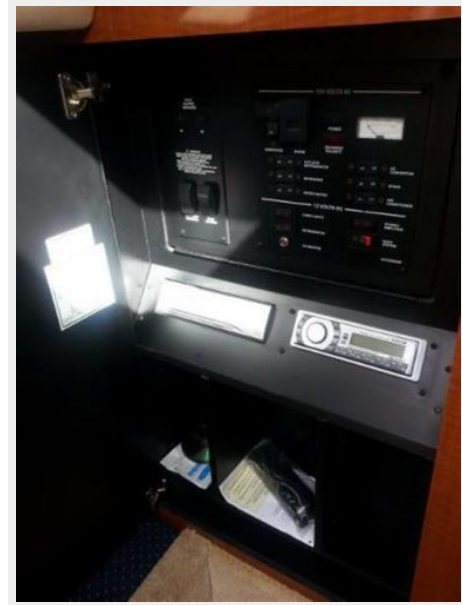
Cockpit Aft



Cockpit Wetbar



Control Panel



Port Salon / Dinette



Dinette



Forward Compartment



Salon Starboard



Galley



Flat Screen / DVD



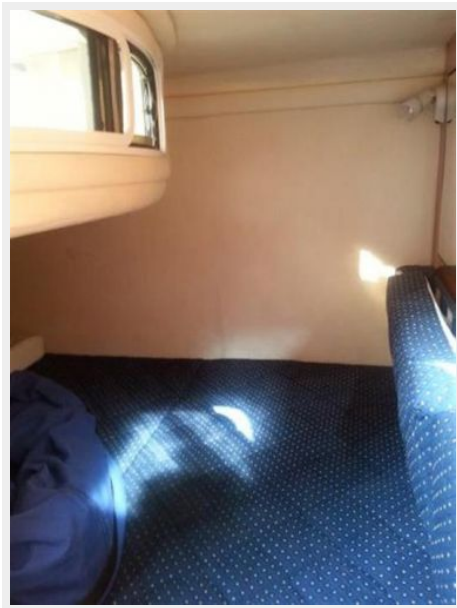
Reverse Cycle A/C Control



Head/Shower



Aft Cabin



Twin 210 hp 4.3L Mercruiser Vortec Engines



5KW Kohler Genset



Battery Bank



Alpha One Counter-Rotating Stern Drives



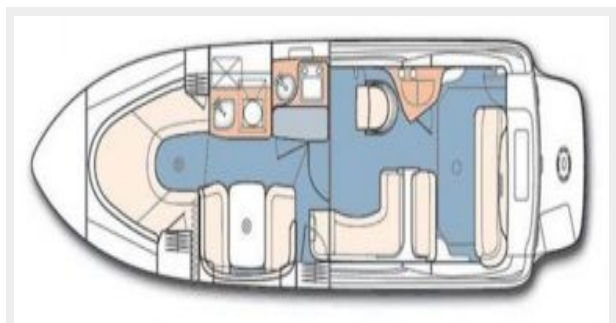
Stern Drives



Manufacturer Provided Image



Vessel Layout



CONTACTS

Andrey Shestakov, leading yacht broker of the sales department of Shestakov Yacht Sales Inc. Shestakov Yacht Sales Inc., the official representative of the Miami/Fort Lauderdale FL headquarters.

Contact details

Email: andrey@shestakovyachtsales.com

Web: shestakovyachtsales.com/en/

Telephones

USA: +1(954)274-4435

Office hours

Monday – Saturday: **9:00 - 21:00** EDT

Sunday: **closed**

Address



Harbour Towne Marina, 850 NE 3rd St,
STE 213, Dania, FL 33004