

PILGRIM — NORDIC TUGS



Builder: NORDIC TUGS

Year Built: 2008

Model: Motor Yacht

Price: PRICE ON APPLICATION

Location: United Kingdom

LOA: 38' 11" (11.86m)

Beam: 12' 11" (3.94m)

Min Draft: 4' 4" (1.32m)

Cruise Speed: 8 Kts. (9 MPH)

Max Speed: 17 Kts. (20 MPH)

Our experienced yacht broker, Andrey Shestakov, will help you choose and buy a yacht that best suits your needs **PILGRIM — NORDIC TUGS** from our catalogue. Presently, at Shestakov Yacht Sales Inc., we have a wide variety of yachts available on our sale's list. We also work in close contact with all the big yacht manufacturers from all over the world.

If you would like to buy a yacht **PILGRIM — NORDIC TUGS** or would like help answering any questions concerning purchasing, selling or chartering a yacht, please call **+1(954)274-4435**

TABLE OF CONTENTS

TABLE OF CONTENTS	2
SPECIFICATIONS	3
Basic Information	3
Dimensions	3
Speed, Capacities and Weight	3
Accommodations	3
Hull and Deck Information	3
Engine Information	4
DETAILED INFORMATION	5
Broker's Comments	5
Construction	5
Machinery	6
Electrical Systems	7
Plumbing Systems	9
Tankage	9
Navigation Equipment	10
Domestic Equipment	11
Accommodation	12
Deck Equipment	15
Exclusions	16
Disclaimer	16
PHOTOS	17
CONTACTS	27
Contact details	27
Telephones	27
Office hours	27
Address	27

SPECIFICATIONS

Basic Information

Category: Motor Yacht

Model Year: 2008

Year Built: 2008

Country: United Kingdom

Dimensions

LOA: 38' 11" (11.86m)

LWL: 37' 4" (11.38m)

Beam: 12' 11" (3.94m)

Min Draft: 4' 4" (1.32m)

Speed, Capacities and Weight

Cruise Speed: 8 Kts. (9 MPH)

Max Speed: 17 Kts. (20 MPH)

Displacement: 22597.381855 Pounds

Water Capacity: 143.97376834 Gallons

Holding Tank: 40.94666806 Gallons

Fuel Capacity: 297.457730552 Gallons

Accommodations

Total Cabins: 2

Total Berths: 4

Total Heads: 1

Hull and Deck Information

Hull Material: GRP

Deck Material: GRP

Hull Configuration: Full Displacement

Hull Designer: Lynn Senour

Engine Information

Engines: 1

Manufacturer: Cummins

Model: QSB 5.9-380 HO

Engine Type: Inboard

Fuel Type: Diesel

DETAILED INFORMATION

Broker's Comments

2008 Nordic Tug 37 pilothouse trawler with c.340 engine hours on her single Cummins 380HP diesel. Excellent fuel efficiency (less than 1 litre per nautical mile at 7 knots) and capable of 17 knots. Rugged go-anywhere coastal cruiser with very high quality interior. Nordic Tugs are hand-built in America with 10 year Gold Standard hull warranty and a huge standard specification.

Construction

RCD Status: The yacht conforms with the essential safety requirements of Directive 94/25EC (Recreational Craft Directive) and is categorised B.

Hull & Superstructure Construction:

- Oyster gel coat colour with flag blue inset/boot stripe.
- Hull guards (UV-stabilized PVC-guards; anchor, hull and sheer, 316 stainless steel inset on hull side guard).
- All exterior fasteners in 316 stainless steel.
- Bonding System (6" x 12" plate zinc on transom, rudder, shoe and thruster zincs).
- Ablative black antifouling.
- Headroom: Saloon 6'7" / 2m.
- Height from: Waterline-top (to stack top) 10'11" / 3.32m.
- Freeboard: at cockpit 3'8" / 1.11m.
- Freeboard: Amidships, at pilot house door 4'2" / 1.27m.
- Headroom: Pilothouse 6'6" / 1.98m.
- Headroom: Forward cabin 6'7" / 2m.

Deck Construction:

- Oyster gel coat colour.

- Moulded textured surface in walking and work deck areas.

Machinery

Engine & Gearboxes:

- 1 x Cummins QSB 5.9-380 HO electronically controller 380hp engine.
- Fuel filter element for primary Racor filters.
- ZF 280-1 at 2.478:1 marine reduction gearbox.
- Racor 75/900MAX dual fuel/water separator filter.
- Bronze seawater strainers.
- Exhaust overheat alarm (cooling water flow temperature sensor).
- Soundown exhaust muffler (dual stage water lift for main engine).
- Reverso oil change system.
- Cummins SmartCraft engine instrumentation.
- ZF cruise command electronic single lever throttle/shift engine controls.
- Additional sound containment fitted to engine.

Maintenance & Performance:

- Engine hours: c. 340 at December 2014.
- Cruising speed: 8-14 knots.
- Max speed: 17 knots.
- Average range at 4 knots – 2800Nm, 7 knots – 1400Nm, 10 knots – 414Nm, 17 knots – 280Nm.
- Annual servicing.

Propulsion & Steering:

- 2" stainless steel propeller shaft with PSS drip less shaft seal.

- 28 x 21.5 Hung Shen 4-blade SP class propeller tuned to ISO-484 pitch tolerances.
- Ambassador rope stripper.
- Lewmar 185 TT 5.0 12V bow thruster (6.7hp at 180lb thrust with Lewmar joystick control).
- Stern thruster.
- Helm wheel (teak spokes and rim with brass trim).
- Tiller arm in bronze with rudder stops.
- Rudder port bearing and shaft lip seal.
- Rudder and shoe in stainless steel with sacrificial zincs.
- Teleflex hydraulic steering system.
- Valves for autopilot hydraulic pump connection.

Other Mechanical Equipment:

- Corian care and maintenance video.
- Multi-bit screwdriver.
- Stainless steel deck fitting key.
- Ultra Performance 3M9030 shaft seal O-ring kit clear silicone.
- Snap Cat kit.
- Assortment of screws & caps.
- Matched gel coat touch-up kit.
- Reduction gear manual owner's manual with schematics.
- Tug operators manual.
- Cummins engine manual.

Electrical Systems

Voltage Systems:

- Blue Sea European 220V AC panel; with sound shield.

- 12V DC electrical system.
- Ancor marine-grade tinned copper wiring throughout.
- Breaker panel 12VDC (Blue Sea 36 position with LED lights).
- Master house bank circuit breaker, switched at DC panel.
- Battery parallel switch.
- Blue Sea 220VAC breaker panel with LED lights.
- 240VAC GFCI outlet in engine room.
- 2 x 220VAC GFCI outlets in galley.
- 2 x 220VAC outlet in saloon.
- 12VDC terminal block for electronics in overhead console of pilothouse; 2 x 12VDC power ports; 220VAC duplex outlet.
- 220VAC duplex GFCI outlet in heads compartment (pre-wired – but sockets not connected (UK safety recommendation)).
- 2 x 220VAC in hanging lockers in owner's cabin.
- 220VAC outlet in hanging locker in guest cabin.

Battery Banks:

- AGM batteries.
- House batteries (4 x 6V deep cycle golf-cart type with battery boxes, 450 amp hours).
- Start batteries (12V 8D with battery box).
- Bow thruster/windlass battery (12V 4D).

Battery Chargers:

- Victron Phoenix C1600W inverter/charger.
- Automatic charge relay charging system.

Alternators:

- 160 amp alternator.

Generator:

- Northern Lights 5kw generator.

Shore Power:

- Shore power connections – 30amp with 1 x 50' cord.

Other Electrical:

- Dual electric horn.

Plumbing Systems

Fresh Water & Water Heating System:

- Hot water tank – 11 gallon electric/engine heat.
- Fresh water pump – Jabsco SensorMax-17 constant pressure.

Bilge Pumps:

- 3 x Rule 2000 GPM, auto/manual switch at helm.
- High bilge water alarm – mounted in engine room, audible at helm and bridge.

Grey & Black Water:

- Sealand Tankwatch 4 blackwater monitoring.

Tankage

- Tank monitoring for fresh water, black water and fuel.

- 2 x stainless steel 2" fuel fills, 1 x stainless steel 1-1/2" water fill.
- Stainless steel 1-1/2" waste suction fitting.

Fuel:

- Total capacity of 1126 litres/324 Gall. in two tanks, with crossover line.
- Fuel gauge integrated in SmartCraft DieselView LCD.

Fresh water:

- Total capacity of 545 litres/144 Gall.

Grey/Blackwater holding tanks:

- Black water (in keel, with deck suction & macerator) (121 litres/32 Gall. total capacity).
- Grey water holding tank (in keel, with automatic 12VDC pump) (34 litre/9 Gall. total capacity).

Gas:

- Propane system (regulator, valve, leak sensor and aft deck storage box).

Navigation Equipment

- Raymarine SPX10 autopilot with 6002 control head.
- Raymarine 14" C series colour multifunction display.
- Raymarine 24" digital radar scanner.
- Raymarine ST60 Depth & Speed.
- Icom M506 DSC VHF & antenna.
- Ritchie flush mount compass.

Domestic Equipment

Galley:

- Nova Kool R4500 refrigerator under counter (AC/DC 4.3 CF).
- Nova Kool F3800 freezer (3.5 cu ft AC/DC).
- Corian countertop.
- Cabinets (teak faced; teak doors and drawer faces).
- Sink to aft starboard corner.
- Drawers (States ApplePly, solid teak faces, ball bearing tracks & sea locks).
- Lockers (2 x large lockers with teak doors, 1 x under sink and 1 x forward of stove/oven).
- Tip-out storage in front of sink.
- Force 10 70351 propane 3-burner stove/oven.
- Drawer banks (4 x drawer aft of stove, 1 x drawer under stove, 1 x drawer over cabinet forward of stove).

Heads/Showers:

- Cockpit shower.
- Vac-U-Flush 500+ series (household size) WC.
- Stainless steel sink with faucet.
- Shower (fibreglass with bi-fold door).

Heating & Ventilation:

- Espar diesel-fired D5LC 18,800BTU heating & cooling furnace.
- Stainless steel powder coated louvered lazarette vents.
- Walker airsep air filter system.
- 12VDC HeaterCraft defroster with 2-speed fan.
- Exhaust fan with switch in heads compartment.

Entertainment:

- Phone/TV dock connection.
- Phone/TV outlet in aft port cabinet of saloon.
- Phone/TV outlet in owner's cabin.

Lighting:

- USCG (approved) navigation lights.
- Light through cockpit dome.
- 2 x lights at boarding platform.
- 5 x lights in engine room.
- Saloon: reading 12VDC, 8 x 12VDC Xenon overhead lights and LED stair lights.
- 2 x 12VDC red LED overhead in pilot house.
- 6 x 12VDC Xenon overhead in pilothouse.
- 2 x 12VDC overhead dome lights in heads compartment.
- 2 x 12VDC reading lights over berth in owner's cabin.
- 3 x 12VDC Xenon overhead lights in owner's cabin.
- 2 x overhead 12VDC Xenon lights in guest cabin.
- 2 x reading 12VDC reading lights in guest cabin.

Accommodation

Summary of Accommodation:

- Teak and holly sole throughout (upgrade).

Windows/Hatches:

- Windows (Diamond Sea Glaze Oyster powder coated: 15 (6 x opening with screens)).

- Doors (Diamond Sea Glaze Oyster powder coated: 2 x sliding pilot house entry and 1 x aft entry).
- Portlights (6 x 8" stainless steel round with screens in forward cabin trunk).
- Hatch (16.5" Bomar with screen in pilothouse).
- Windshield wipers (3 x pantograph style, adjustable speed, self-park with washer systems).
- Hatch (22" Bomar with screen in owner's cabin).
- Teak-framed pilot house windows.
- Blinds fitted to all windows, doors and port-lights.

Interior Finish and Trim:

- Ultrasuede upholstery saloon & pilot house: Corian solid surface countertops galley, saloon, head and helm.
- Overhead and bulkhead coverings in vinyl with foam backing.
- Teak valances in saloon.
- Teak interior passageway doors and trim.
- Teak cabinet doors and drawer faces.

Description of layout:

Saloon:

- Cabinet on port side aft with door, Corian top.
- Settee (converts to double bed with storage under).
- Stereo.
- Teak table with fixed base.

Pilot House:

- Chart table Wilsonart graphic laminate top, teak-faced.
- Full width overhead instrument console with storage.
- Helm seat on adjustable slider with foot rest.

Heads Compartment:

- Vanity cabinet with storage below, teak doors, Corian top 'Oyster'.
- Mirror over sink.
- Fixtures (toilet paper holder, towel rings and bar).
- Linoleum Armstrong 'Desert Sand' floor covering.

Owner's Cabin:

- Queen-size island berth with full pocket sprung mattress.
- Chain locker forward with teak access door.
- 4 x drawers under berth.
- Full length mirror next to entry door.
- Hull side storage cabinets with open shelves forward.
- Hanging lockers, with automatic lights, Wilsonart.
- 2 x Almond leather laminate tops.

Guest Cabin:

- Double berth with full pocket sprung mattress.
- Hanging locker with automatic light, Wilsonart.
- Almond leather laminate top and teak door.
- Teak three-drawer dresser aft, Wilsonart Almond.
- Leather laminate top.
- Mirror above three-drawer dresser.

Deck Equipment

General:

- 2 x container boxes, with lids.
- Pennant staff on bow rail.
- Stainless steel Samson post to bow.
- Additional bollards and fairleads forward.
- 2 x stainless steel hand grabs forward, and 1 x aft of pilot house doors.
- Stainless steel hand rails on pilot house top.
- 1-1/3" x 30" stainless steel rails on saloon cabin top (removable starboard) and ladder on port side.
- Deck rails, 1-1/4" bow and stern.
- Deck box in cockpit with drain.
- Scuppers in cockpit.
- Fender storage moulded in cockpit.
- Sea water deckwash at fore & aft.
- 13-3/8" stainless steel hand grab on transom over swim ladder.
- Swim ladder, built into boarding platform.
- Full derrick mast for dinghy handling (2 Harken winches fitted) and nav. kit mounting.

Anchoring & Mooring Equipment:

- 4 x G-5 fenders and lines.
- 4 x 5/8" x 25' mooring lines.
- Anchor light.
- Lofrans Tigress LW400AN windlass, 1200W, 12VDC.
- Stainless steel anchor roller assembly.
- ROCNA 25kg bow anchor, with 90m chain.

- Fortress stern anchor.
- 10 x 12" stainless steel cleats.
- Stern-mounted winch for aft mooring/line handling.

Covers, Canvas & Cushions:

- Blue canvas upper deck dodgers.
- Blue canvas after cockpit canopy enclosure with transparent windows.
- Tailored covers to all windows/doors/port-lights.
- White mesh pilothouse exterior screen covers.

Tender & Outboard:

- 10' Plastimo RIB and 2.5HP 4-stroke outboard engine.

Fire-fighting equipment:

- 3 x Class 5 B-C fire extinguishers.
- Fireboy CG2-500 fire suppression system.

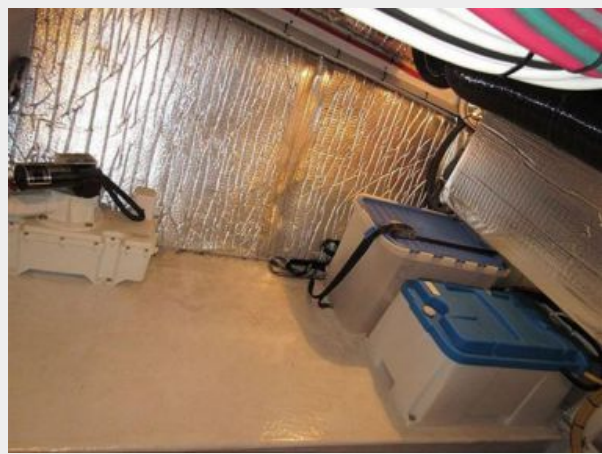
Exclusions

Owner's personal belongings.

Disclaimer

The Company offers the details of this vessel or yacht in good faith but cannot guarantee or warrant the accuracy of this information nor warrant the condition of the vessel. A buyer should instruct his representatives, agents, or his surveyors, to investigate such details as the buyer desires validated. This vessel or yacht is offered subject to prior sale, price change, or withdrawal without notice.

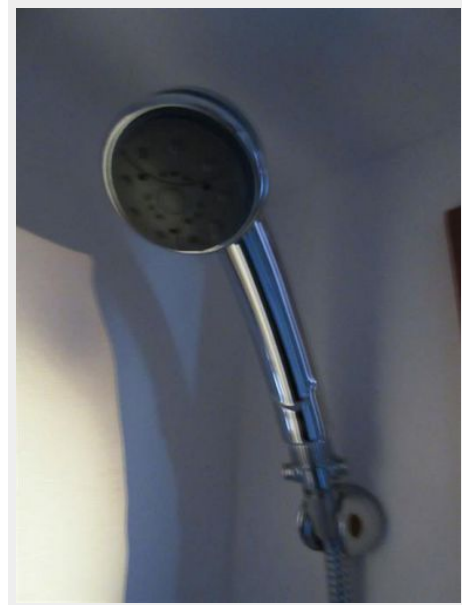
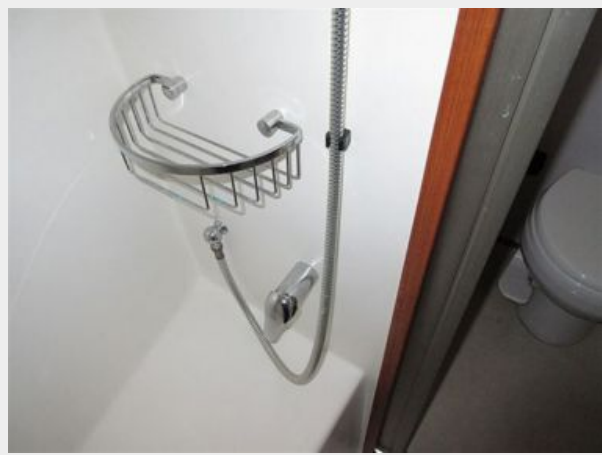
PHOTOS





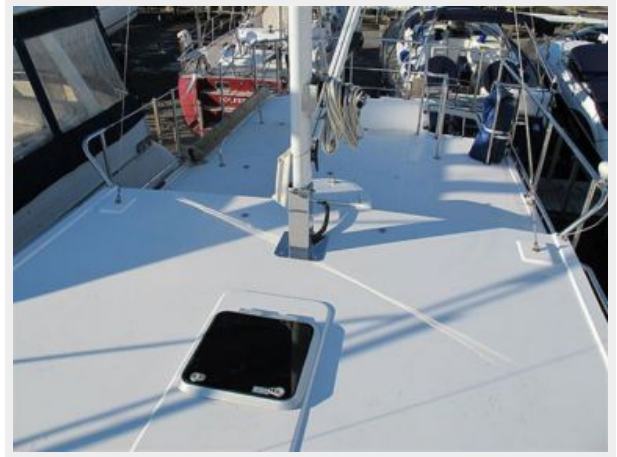
















CONTACTS

Andrey Shestakov, leading yacht broker of the sales department of Shestakov Yacht Sales Inc. Shestakov Yacht Sales Inc., the official representative of the Miami/Fort Lauderdale FL headquarters.

Contact details

Email: andrey@shestakovyachtsales.com

Web: shestakovyachtsales.com/en/

Telephones

USA: +1(954)274-4435

Office hours

Monday – Saturday: **9:00 - 21:00** EDT

Sunday: **closed**

Address



Harbour Towne Marina, 850 NE 3rd St,
STE 213, Dania, FL 33004