

AT LAST — HEESEN YACHTS



Builder: HEESEN YACHTS

Year Built: 1990

Model: Motor Yacht

Price: PRICE ON APPLICATION

Location: St. Maarten

LOA: 144' 11" (44.17m)

Beam: 27' 2" (8.28m)

Max Draft: 6' 0" (1.83m)

Cruise Speed: 12 Kts. (14 MPH)

Max Speed: 18 Kts. (21 MPH)

Our experienced yacht broker, Andrey Shestakov, will help you choose and buy a yacht that best suits your needs **AT LAST — HEESEN YACHTS** from our catalogue. Presently, at Shestakov Yacht Sales Inc., we have a wide variety of yachts available on our sale's list. We also work in close contact with all the big yacht manufacturers from all over the world.

If you would like to buy a yacht **AT LAST — HEESEN YACHTS** or would like help answering any questions concerning purchasing, selling or chartering a yacht, please call **+1(954)274-4435**

TABLE OF CONTENTS

TABLE OF CONTENTS	2
SPECIFICATIONS	4
Basic Information	4
Dimensions	4
Speed, Capacities and Weight	4
Accommodations	4
Hull and Deck Information	5
Engine Information	5
DETAILED INFORMATION	6
Remarks	6
Construction	6
Main Characteristics	6
Machinery	7
Accommodations	8
Galley and Laundry Equipment	9
Communications, Navigation and Entertainment Equipment	10
Tenders and Watersports	11
Deck Equipment	12
Safety and Security Equipment	12
Refit History	13
Exclusions	14
Exclusions	14
Disclaimer	14
PHOTOS	15
Dining	15
Main Salon	15
Master Head	15
Master Stateroom	15

VIP	15
Guest Stateroom	15
Guest Stateroom Head	16
Guest Stateroom	16
Guest Stateroom Head	16
Double Guest Stateroom	16
Lower Foyer	16
Pilothouse	16
Flybridge	17
Skylounge Forward	17
Foredeck	17
CONTACTS	18
Contact details	18
Telephones	18
Office hours	18
Address	18

SPECIFICATIONS

Basic Information

Category: Motor Yacht	Sub Category: Tri-Deck
Model Year: 1990	Year Built: 1990
Refit Year: 2014	Country: St. Maarten

Dimensions

LOA: 144' 11" (44.17m)	Beam: 27' 2" (8.28m)
Max Draft: 6' 0" (1.83m)	

Speed, Capacities and Weight

Cruise Speed: 12 Kts. (14 MPH)	Cruise Speed Range: 2000
Max Speed: 18 Kts. (21 MPH)	Gross Tonnage: 391 Pounds
Water Capacity: 4000 Gallons	Fuel Capacity: 19400 Gallons

Accommodations

Total Cabins: 5	Sleeps: 11
Total Heads: 7	Captain Cabin: True
Crew Cabin: 4	Crew Berths: 8
Crew Sleeps: 8	

Hull and Deck Information

Hull Material: Aluminum

Deck Material: Teak

Hull Configuration: Semi-Displacement

Hull Designer: Gerhard Gilgenast

Exterior Designer: Heesen Yachts

Interior Designer: Tui Pranich

Engine Information

Engines: 2

Manufacturer: MTU

Model: 12V4000

Engine Type: Inboard

Fuel Type: Diesel

DETAILED INFORMATION

Remarks

AT LAST is one of Heeson's most successful yachts they have ever constructed of any size. From her attainment of popularity, obvious quality, superb features and her 45 meter length she has become a recognized symbol of Heeson excellence. A new owner will benefit from her recent upgrade array of A/V equipment, electronics, electrical, mechanical and plumbing systems in addition to her pristine new Tui Pranich interior.

Construction

Aluminium Hull & Superstructure with decks

Main Characteristics

General

BUILDER:	Heesen Yachts
YEAR:	1990
LOA:	44.1m/144' 11"
BEAM:	8.46m/27' 9"
DRAFT:	1.83m/5' 8"
CLASSIFICATION:	ABS, Bureau Veritas
GROSS TONS:	370 Tons
DISPLACEMENT:	389

DESIGNER: Gerhard Gilgenast

NAVAL ARCHITECT: Gerhard Gilgenast

INTERIOR DESIGNER: Tui Pranich

HULL COLOUR: White

Capacities

CRUISE SPEED: 12 Knots (approx)

MAXIMUM SPEED: 18 Knots (approx)

FUEL CAPACITY: 19,400 US Gallons (73,436 Litres)

WATER CAPACITY: 4,000 US Gallons (15,141 Litres)

FUEL CONSUMPTION: 140 US GPH

Machinery

ENGINES: 2 x MTU 2,735HP

ENGINE HOURS: Port: 2,380hrs (17-Jul-2014)
Starboard: 2,400hrs (17-Jul-2014)

FUEL: DIESEL

PROPULSION: WATER JETS

STEERING: (2) KaMeWa waterjets 80S62/6

STABILIZERS: Naiad with Quantum conversion 402, 16 sq. ft. fins

Generators

GENERATORS: (2) 99 kW Onan generators

Electricity

ELECTRICITY: 208V/3 Phase/60 Hz

SHORE
POWER: 100 amp 480V/3 Phase/60 Hz

BATTERIES: Three separate battery banks for DC Pilot House. Odyssey – (2) Cords aft and forward). Main engine starting – 24V DC gel cell. Generator starting – 24V DC gel cell/ each engine. General service – Separate 24V DC. Converter – Atlas system and Smart Box 75 kW, converting 50 – 60 Hz

Other Machinery

Bow Thruster: Quantum 150 Hp/pump on each engine

Watermakers: (2) Village Marine

Fuel Separator & Filtration: Centrifuge

Accommodations

Guest Accommodation:

The full beam Owner's Suite is located on the main deck forward with center line king size bed and offers a panoramic view or complete privacy with custom, fitted electric blinds. Full entertainment system. There is a sofa to port, a desk to starboard and 2 walk in closets. The master bath features 2 sinks, a large Jacuzzi and huge shower with rain shower overhead and 3 wall fitted shower heads.

On the lower deck are 4 guest staterooms: 1 King, 2 Queens and 1 Twin with additional Pullman berth, the doubles have ensuite bathrooms with showers and the twin has a Jacuzzi tub with shower.

Semi circular lobby on the lower deck offers refrigerator drawers for the guests convenience. It is also the lower end of a central winding staircase connecting all 3 decks. On the main deck it divides the octagonal shaped main salon from the dining area and continues on to the bridge deck and sky lounge. Here is a full wet bar with stools, comfortable seating and sliding doors with access to the aft deck dining and seating area.

The upper deck features Jacuzzi, wet bar with bar stools, grill, sun loungers, sturdy market umbrellas and a table with seating for 10.

Galley and Laundry Equipment

- Wolf glass top cooker
- Viking microwave
- (2) True fridges
- Akso dishwasher
- (2) Hatco heat lamp
- Garbage disposal
- Granite counter tops with splashboards
- Marvel fridge
- U-line icemaker
- (2) GE trash compactors

- (2) Whirlpool washer
- (3) New dryers
- Ironing board
- (1) Sub-Zero Fridge and Freezer

Communications, Navigation and Entertainment Equipment

Communications Equipment

- land and 16 extensions for internal communications
- Panasonic KX T61610 phone system through computer relay
- 4-line for sitcom
- fax
- cell
- SSB: Furuno FS-5000 400w
- GMDSS: Furuno FM-8500 fixed

Navigation Equipment

- (2) Furuno 120-mile color radar with ARPA
- Auto Gyro Pilot
- Sperry Marine Navipilot AD11
- C-Plath Litton Marine systems
- Furuno GP 32 GPS
- Furuno GP 150 GPS
- Northstar 6100 GPS
- Furuno RX NX 500 Navtex
- Depth Sounders – (1) Furuno RD30, (1) B&G, (1) Black Box (feeding either Nobletec or Northstar)
- Sestrel magnetic compass and (1) magnetic transmitting (autopilot)

- B&G wind & speed indicator

Entertainment Equipment

· **Televisions:**

- Aft Deck: 42" Sanyo
- Skylounge: 46" NEC
- Main Salon: 46" nec
- Master: 40" Panasonic
- VIP: 40" NEC
- Guest: 19" LG
- Captain: 21" Sharpe
- Crew Mess: 21" Sharpe
- Crew Cabins: (6) 15" Pyle
- **X-Box's:**
- Skylounge: (1)
- Main Salon: (1)
- VIP: (1)
- Guest Cabins: (3)
- Crew Mess: (1)

Tenders and Watersports

- (1) Novurania 550DL 18'/5.5m tender
- (6) ScubaPro diving gear
- (4) Yamaha GP 1300R waverunners
- (5) Seadoo scooters
- O'Brien slalom ski
- O'Brien wakeboard

- O'Brien Junior water ski set
- (2) Donuts
- Water Slide
- (2) Sea Bobs
- Water Trampoline
- Paddle Boards
- (4) Sea kayaks – (2) single seat, (2) double seat
- Snorkeling equipment and assorted fishing gear
- Bauer 3 stage manual dive compressor and (1) Brownies 3rd lung

Deck Equipment

- Steen windlass anchor system with single motor and double drum
- Steen deck capstan, port and stbd aft deck
- 450' anchor chain and rode, each side
- (2) Tecnoship main tender davits

Safety and Security Equipment

- Full medical and pharmaceutical equipment
- Audio alarms on all external doors
- (3) Solas approved lifejackets
- (4) child jackets
- (6) Ship's safes
- (2) 16-man RFD inflatable life rafts
- (5) Life rings
- (3) 406 EPIRB's
- Full set of flares
- Fire/heat/smoke detectors throughout
- Fixed Kidde halon system – engine room
- (5) Seawater fire fighting stations

- SCBA's + (3) fireman suits
- Searchlights
- Air to sea radio
- Floating stretcher with straps
- Epi pens for children
- Panasonic CCTV system with monitors in crew mess and wheelhouse
- Portable CO2 and dry chemical fire extinguishers throughout
- (8) Cameras in port and starboard companionways, aft deck, (2) Engine room and (2) Master forward and Master aft
- Portable emergency fire and bilge pump
- MOB smoke and lights (2)
- Safety throw line
- Defibrillator pads for children
- Oxygen bottles with on demand and free flow adaptors
- Entire safety systems upgraded to exceed BV and Marshall Islands regulations
- Crew saver life jackets for rough weather with harnesses, safety lines, strobe lights, torches

Refit History

1990 / refit 2003, 2005.

Major refit 2009

Winter 2014 complete interior refit

General

Five Year Survey Hull repainted New sun deck umbrella Jet skis refurbished New security cameras Generators zeroed out Mains serviced – raw water piping renewed / heat exchanger serviced Cranes Serviced – rerigged and replaced cables. Electrical service completed Painted hull transom, bottom, sun deck non-skid, cap rails, and clear coated hull. Awlgrip touch ups. Repaired teak decking where needed New Name Boards Replaced bow thruster Replaced engine room stand pipes Misc Electronics work completed including navigation system Window

replacements Atlas Panel Modifications Alignment Report/Control Cables Stabilizer Work Upgraded A/V System New Sea Tel Antenna and on board network New WiFi module Electrical upgrades New Viking oven Interior Refit by Tui Pranich New carpets throughout New wall upholstery throughout vessel New window treatments New plumbing fixtures, faucets, showerheads & controls. Replaced all loose furniture Reupholstered exterior deck furniture Reupholstered crew dining chairs New wallpaper crew mess Replaced door handles & locks, interior mortise remained the same Replaced Sky lounge bar Granite New wallpaper in radio room & captains room Replaced light switch plates Replaced artwork Interior wood finish touch ups

Exclusions

All Owner and crew personal effects. All Artwork 35' Tender

Exclusions

Owner's personal belongings.

Disclaimer

The Company offers the details of this vessel or yacht in good faith but cannot guarantee or warrant the accuracy of this information nor warrant the condition of the vessel. A buyer should instruct his representatives, agents, or his surveyors, to investigate such details as the buyer desires validated. This vessel or yacht is offered subject to prior sale, price change, or withdrawal without notice.

PHOTOS

Main Salon



Dining



Master Stateroom



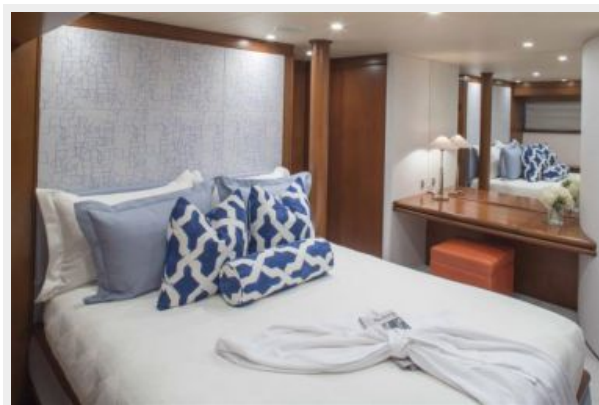
Master Head



VIP



Guest Stateroom



Guest Stateroom Head



Guest Stateroom



Guest Stateroom Head



Double Guest Stateroom



Lower Foyer



Pilothouse



Skylounge Forward



Flybridge



Foredeck



CONTACTS

Andrey Shestakov, leading yacht broker of the sales department of Shestakov Yacht Sales Inc. Shestakov Yacht Sales Inc., the official representative of the Miami/Fort Lauderdale FL headquarters.

Contact details

Email: **andrey@shestakovyachtsales.com**

Web: shestakovyachtsales.com/en/

Telephones

USA: **+1(954)274-4435**

Office hours

Monday – Saturday: **9:00 - 21:00 EDT**

Sunday: **closed**

Address



Harbour Towne Marina, 850 NE 3rd St,
STE 213, Dania, FL 33004