

AT LAST — HEESEN YACHTS



Судостроитель: HEESEN YACHTS

Год постройки: 1990

Модель: Моторная яхта

Цена: ЦЕНА ЯХТЫ ПО ЗАПРОСУ

Местонахождение: St. Maarten

Длина общая: 144' 11" (44.17m)

Ширина: 27' 2" (8.28m)

Макс. осадка: 6' 0" (1.83m)

Крейс. скорость: 12 Kts. (14 MPH)

Макс. скорость: 18 Kts. (21 MPH)

Купить **AT LAST — HEESEN YACHTS** а также выбрать подходящую вам яхту из нашего каталога яхт вам поможет опытный яхтенный брокер Андрей Шестаков. На сегодняшний день компания **Shestakov Yacht Sales Inc.** имеет большое количество яхт в собственном списке продаж, а также тесно сотрудничает со всеми крупными яхтенными производителями по всему миру.

Для того чтобы купить яхту **AT LAST — HEESEN YACHTS** а также проконсультироваться по любому вопросу связанному с покупкой, продажей, чартером яхт позвоните по телефону **+7(918)465-66-44**.

ОГЛАВЛЕНИЕ

ОГЛАВЛЕНИЕ	2
ХАРАКТЕРИСТИКИ	4
Основная информация	4
Размеры	4
Скорость, вместимость и масса	4
Размещение	4
Корпус и палуба	5
Информация о двигателе	5
ПОДРОБНОЕ ОПИСАНИЕ	6
Remarks	6
Construction	6
Main Characteristics	6
Machinery	7
Accommodations	8
Galley and Laundry Equipment	9
Communications, Navigation and Entertainment Equipment	10
Tenders and Watersports	11
Deck Equipment	12
Safety and Security Equipment	12
Refit History	13
Exclusions	14
Исключения	14
Отказ от ответственности	14
ФОТОГРАФИИ	15
Dining	15
Main Salon	15
Master Head	15
Master Stateroom	15

VIP	15
Guest Stateroom	15
Guest Stateroom Head	16
Guest Stateroom	16
Guest Stateroom Head	16
Double Guest Stateroom	16
Lower Foyer	16
Pilothouse	16
Flybridge	17
Skylounge Forward	17
Foredeck	17
КОНТАКТЫ	18
Контактная информация	18
Телефоны	18
Время работы	18
Адрес	18

ХАРАКТЕРИСТИКИ

Основная информация

Тип судна: Моторная яхта

Подкатегория: Tri-Deck

Модельный год: 1990

Год постройки: 1990

Год обновления: 2014

Страна: St. Maarten

Размеры

Длина общая: 144' 11" (44.17m)

Ширина: 27' 2" (8.28m)

Макс. осадка: 6' 0" (1.83m)

Скорость, вместимость и масса

Крейс. скорость: 12 Kts. (14 MPH)

Дальность на крейсерской скорости:
2000

Макс. скорость: 18 Kts. (21 MPH)

Чистый вес: 391 Pounds

Вместимость воды: 4000 Gallons

Объем топливного бака: 19400 Gallons

Размещение

Всего кают: 5

Спальные места: 11

Всего ком. состава: 7

Каюта капитана: Да

Каюты экипажа: 4

Койки экипажа: 8

Спальных мест экипажа: 8

Корпус и палуба

Материал корпуса: Aluminum

Материал палубы: Teak

Комплектация корпуса: Semi-Displacement

Дизайнер корпуса: Gerhard Gilgenast

Дизайнер экстерьера: Heesen Yachts

Дизайнер интерьера: Tui Pranich

Информация о двигателе

Двигатели: 2

Производитель: MTU

Модель: 12V4000

Тип двигателя: Inboard

Тип топлива: Diesel

ПОДРОБНОЕ ОПИСАНИЕ

Remarks

AT LAST is one of Heesen's most successful yachts they have ever constructed of any size. From her attainment of popularity, obvious quality, superb features and her 45 meter length she has become a recognized symbol of Heesen excellence. A new owner will benefit from her recent upgrade array of A/V equipment, electronics, electrical, mechanical and plumbing systems in addition to her pristine new Tui Pranich interior.

Construction

Aluminium Hull & Superstructure with decks

Main Characteristics

General

BUILDER:	Heesen Yachts
YEAR:	1990
LOA:	44.1m/144' 11"
BEAM:	8.46m/27' 9"
DRAFT:	1.83m/5' 8"
CLASSIFICATION:	ABS, Bureau Veritas
GROSS TONS:	370 Tons
DISPLACEMENT:	389

DESIGNER: Gerhard Gilgenast

NAVAL ARCHITECT: Gerhard Gilgenast

INTERIOR DESIGNER: Tui Pranich

HULL COLOUR: White

Capacities

CRUISE SPEED: 12 Knots (approx)

MAXIMUM SPEED: 18 Knots (approx)

FUEL CAPACITY: 19,400 US Gallons (73,436 Litres)

WATER CAPACITY: 4,000 US Gallons (15,141 Litres)

FUEL CONSUMPTION: 140 US GPH

Machinery

ENGINES: 2 x MTU 2,735HP

ENGINE HOURS: Port: 2,380hrs (17-Jul-2014)
Starboard: 2,400hrs (17-Jul-2014)

FUEL: DIESEL

PROPULSION: WATER JETS

STEERING: (2) KaMeWa waterjets 80S62/6

STABILIZERS: Naiad with Quantum conversion 402, 16 sq. ft. fins

Generators

GENERATORS: (2) 99 kW Onan generators

Electricity

ELECTRICITY: 208V/3 Phase/60 Hz

SHORE
POWER: 100 amp 480V/3 Phase/60 Hz

BATTERIES: Three separate battery banks for DC Pilot House. Odyssey – (2) Cords aft and icord fwd). Main engine starting – 24V DC gel cell. Generator starting – 24V DC gel cell/ each engine. General service – Separate 24V DC. Converter – Atlas system and Smart Box 75 kW, converting 50 – 60 Hz

Other Machinery

Bow Thruster: Quantum 150 Hp/pump on each engine

Watermakers: (2) Village Marine

Fuel Separator & Filtration: Centrifuge

Accommodations

Guest Accommodation:

The full beam Owner's Suite is located on the main deck forward with center line king size bed and offers a panoramic view or complete privacy with custom, fitted electric blinds. Full entertainment system. There is a sofa to port, a desk to starboard and 2 walk in closets. The master bath features 2 sinks, a large Jacuzzi and huge shower with rain shower overhead and 3 wall fitted shower heads.

On the lower deck are 4 guest staterooms: 1 King, 2 Queens and 1 Twin with additional Pullman berth, the doubles have ensuite bathrooms with showers and the twin has a Jacuzzi tub with shower.

Semi circular lobby on the lower deck offers refrigerator drawers for the guests convenience. It is also the lower end of a central winding staircase connecting all 3 decks. On the main deck it divides the octagonal shaped main salon from the dining area and continues on to the bridge deck and sky lounge. Here is a full wet bar with stools, comfortable seating and sliding doors with access to the aft deck dining and seating area.

The upper deck features Jacuzzi, wet bar with bar stools, grill, sun loungers, sturdy market umbrellas and a table with seating for 10.

Galley and Laundry Equipment

- Wolf glass top cooker
- Viking microwave
- (2) True fridges
- Akso dishwasher
- (2) Hatco heat lamp
- Garbage disposal
- Granite counter tops with splashboards
- Marvel fridge
- U-line icemaker
- (2) GE trash compactors

- (2) Whirlpool washer
- (3) New dryers
- Ironing board
- (1) Sub-Zero Fridge and Freezer

Communications, Navigation and Entertainment Equipment

Communications Equipment

- land and 16 extensions for internal communications
- Panasonic KX T61610 phone system through computer relay
- 4-line for sitcom
- fax
- cell
- SSB: Furuno FS-5000 400w
- GMDSS: Furuno FM-8500 fixed

Navigation Equipment

- (2) Furuno 120-mile color radar with ARPA
- Auto Gyro Pilot
- Sperry Marine Navipilot AD11
- C-Plath Litton Marine systems
- Furuno GP 32 GPS
- Furuno GP 150 GPS
- Northstar 6100 GPS
- Furuno RX NX 500 Navtex
- Depth Sounders – (1) Furuno RD30, (1) B&G, (1) Black Box (feeding either Nobletec or Northstar)
- Sestrel magnetic compass and (1) magnetic transmitting (autopilot)

- B&G wind & speed indicator

Entertainment Equipment

· **Televisions:**

- Aft Deck: 42" Sanyo
- Skylounge: 46" NEC
- Main Salon: 46" nec
- Master: 40" Panasonic
- VIP: 40" NEC
- Guest: 19" LG
- Captain: 21" Sharpe
- Crew Mess: 21" Sharpe
- Crew Cabins: (6) 15" Pyle
- **X-Box's:**
- Skylounge: (1)
- Main Salon: (1)
- VIP: (1)
- Guest Cabins: (3)
- Crew Mess: (1)

Tenders and Watersports

- (1) Novurania 550DL 18'/5.5m tender
- (6) ScubaPro diving gear
- (4) Yamaha GP 1300R waverunners
- (5) Seadoo scooters
- O'Brien slalom ski
- O'Brien wakeboard

- O'Brien Junior water ski set
- Water Slide
- Water Trampoline
- (4) Sea kayaks – (2) single seat, (2) double seat
- Bauer 3 stage manual dive compressor and (1) Brownies 3rd lung
- (2) Donuts
- (2) Sea Bobs
- Paddle Boards
- Snorkeling equipment and assorted fishing gear

Deck Equipment

- Steen windlass anchor system with single motor and double drum
- 450' anchor chain and rode, each side
- Steen deck capstan, port and stbd aft deck
- (2) TecnoShip main tender davits

Safety and Security Equipment

- Full medical and pharmaceutical equipment
- (3) Solas approved lifejackets
- (6) Ship's safes
- (5) Life rings
- Full set of flares
- Fixed Kidde halon system – engine room
- Audio alarms on all external doors
- (4) child jackets
- (2) 16-man RFD inflatable life rafts
- (3) 406 EPIRB's
- Fire/heat/smoke detectors throughout
- (5) Seawater fire fighting stations

- SCBA's + (3) fireman suits
- Searchlights
- Air to sea radio
- Floating stretcher with straps
- Epi pens for children
- Panasonic CCTV system with monitors in crew mess and wheelhouse
- Portable CO2 and dry chemical fire extinguishers throughout
- (8) Cameras in port and starboard companionways, aft deck, (2) Engine room and (2) Master forward and Master aft
- Portable emergency fire and bilge pump
- MOB smoke and lights (2)
- Safety throw line
- Defibrillator pads for children
- Oxygen bottles with on demand and free flow adaptors
- Entire safety systems upgraded to exceed BV and Marshall Islands regulations
- Crew saver life jackets for rough weather with harnesses, safety lines, strobe lights, torches

Refit History

1990 / refit 2003, 2005.

Major refit 2009

Winter 2014 complete interior refit

General

Five Year Survey Hull repainted New sun deck umbrella Jet skis refurbished New security cameras Generators zeroed out Mains serviced – raw water piping renewed / heat exchanger serviced Cranes Serviced – rerigged and replaced cables. Electrical service completed Painted hull transom, bottom, sun deck non-skid, cap rails, and clear coated hull. Awlgrip touch ups. Repaired teak decking where needed New Name Boards Replaced bow thruster Replaced engine room stand pipes Misc Electronics work completed including navigation system Window

replacements Atlas Panel Modifications Alignment Report/Control Cables Stabilizer Work Upgraded A/V System New Sea Tel Antenna and on board network New WiFi module Electrical upgrades New Viking oven Interior Refit by Tui Pranich New carpets throughout New wall upholstery throughout vessel New window treatments New plumbing fixtures, faucets, showerheads & controls. Replaced all loose furniture Reupholstered exterior deck furniture Reupholstered crew dining chairs New wallpaper crew mess Replaced door handles & locks, interior mortise remained the same Replaced Sky lounge bar Granite New wallpaper in radio room & captains room Replaced light switch plates Replaced artwork Interior wood finish touch ups

Exclusions

All Owner and crew personal effects. All Artwork 35' Tender

Исключения

При продаже яхты исключаются личные вещи владельца.

Отказ от ответственности

Компания предоставляет описание судна или яхты добросовестно, но не может гарантировать точность этой информации, а также не ручается за техническое состояние. Покупатель должен проинструктировать своих агентов или оценщиков исследовать представленную информацию более подробно, по собственному желанию. Продажа судна или яхты, изменение цены или снятие с продажи будет происходить без предварительного уведомления.

ФОТОГРАФИИ

Main Salon



Dining



Master Stateroom



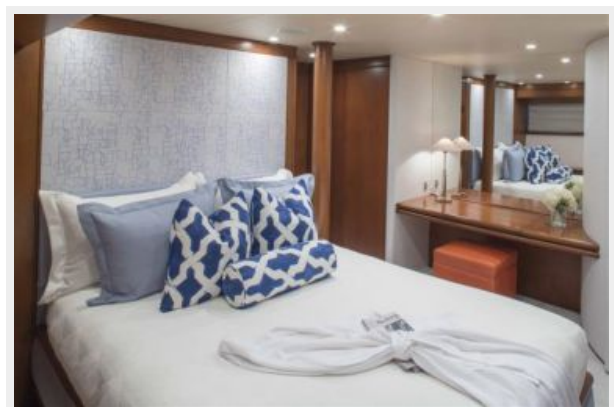
Master Head



VIP



Guest Stateroom



Guest Stateroom Head



Guest Stateroom



Guest Stateroom Head



Double Guest Stateroom



Lower Foyer



Pilothouse



Skylounge Forward



Flybridge



Foredeck



КОНТАКТЫ

Андрей Шестаков (Andrey Shestakov) – ведущий яхтенный брокер отдела продаж яхт и судов компании Shestakov Yacht Sales Inc. Официальный представитель Shestakov Yacht Sales Inc. для русскоговорящих клиентов в центральном офисе компании в Майами/Форт Лодердейл/Флорида/США.

Контактная информация

Email: andrey@shestakovyachtsales.com

Web: shestakovyachtsales.com

Телефоны

Краснодарский край: **+7(918)465-66-44**

США, Майами, Флорида: **+1(954)274-4435**

Время работы

Понедельник – Суббота: **9:00 - 21:00**
EDT

Воскресенье: **Закрето**

Адрес



Harbour Towne Marina, 850 NE 3rd St,
STE 213, Dania, FL 33004