

SL94 AMERICAS EDITION — SANLORENZO



Builder: SANLORENZO

Year Built: 2012

Model: Motor Yacht

Price: PRICE ON APPLICATION

Location: United States

LOA: 94' 0" (28.65m)

Beam: 22' 1" (6.73m)

Max Draft: 6' 3" (1.91m)

Cruise Speed: 25 Kts. (29 MPH)

Max Speed: 28 Kts. (32 MPH)

Our experienced yacht broker, Andrey Shestakov, will help you choose and buy a yacht that best suits your needs **SL94 Americas Edition — SANLORENZO** from our catalogue. Presently, at Shestakov Yacht Sales Inc., we have a wide variety of yachts available on our sale's list. We also work in close contact with all the big yacht manufacturers from all over the world.

If you would like to buy a yacht **SL94 Americas Edition — SANLORENZO** or would like help answering any questions concerning purchasing, selling or chartering a yacht, please call **+1(954)274-4435**

TABLE OF CONTENTS

TABLE OF CONTENTS	2
SPECIFICATIONS	5
Overview	5
Basic Information	5
Dimensions	5
Speed, Capacities and Weight	6
Accommodations	6
Hull and Deck Information	6
Engine Information	6
DETAILED INFORMATION	7
OVERVIEW	7
Engine & Mechanical	7
Electrical	7
Engine Room Equipment	8
Navigation Electronics	8
Deck & Exterior	8
Flybridge	9
Interior & Décor	9
Appliances	9
Tank Capacities	10
Certifications & Awards	10
Exclusions	10
Disclaimer	11
PHOTOS	12
Tender Garage	12
Profile (2)	12
Flybridge	12
Flybridge Sliding Boffi Bar - Closed	12

Flybridge TV	12
Flybridge Sliding Boffit Bar - Open	12
Helm	13
Foredeck	13
Aft Deck	13
Aft Deck - Tables Up	13
Salon (1)	13
Salon (2)	13
Salon Bar	14
Salon (3)	14
Dining/Multi-purpose Area (1)	14
Dining/Multi-purpose Area (2)	14
Galley (2)	14
Galley (1)	14
Staircase to Lower Deck (1)	15
Pilothouse	15
Salon Focal Point/Divider	15
Staircase to Lower Deck (2)	15
Master Stateroom	16
Master Stateroom - Head Open	16
Master Shower	16
Master Stateroom - Head Closed	16
Corridor to Guest Staterooms	16
VIP Stateroom	16
VIP Head	17
Guest Stateroom	17
Guest Stateroom w/ Pullman down	17
Guest Head	17
Engine Room	17

CONTACTS	18
-----	-----
Contact details	18
-----	-----
Telephones	18
-----	-----
Office hours	18
-----	-----
Address	18
-----	-----

SPECIFICATIONS

Overview

This Sanlorenzo SL94 is a stunning planing yacht. The craftsmanship of the various components of this model illustrate the incredible skill level associated with the Sanlorenzo pedigree. Built in Viareggio, Italy, Sanlorenzo yachts are considered the quietest in their category – both at sea and at the dock.

Designed for the Americas market, she has full "Americas Edition" specifications, including Zero Speed stabilizers, hydraulic swim platform, tender garage, tropicalized A/C system and hard top. Powered by MTU 16V2000 M84 main engines with 550 hours. Extended warranty until April 30 2018 on main engines and 55kW Onan generators. Sleeps 8 in 4 staterooms, or 10 using the Pullmans in the guest staterooms. Crew accommodations for up to 4.

Large exterior spaces lend to the tranquility of the cruising lifestyle. Her flybridge is fully-equipped for dining and entertaining, with a Boffi bar, TV, ice maker and fridge. Elegant Italian lounge furniture by Manutti invites guests to eat and relax simultaneously.

Interior spaces are characterized by a collection of woods, fabrics and stones designed to honor their natural beauty. Bulkheads are bleached Oak with Canalet Walnut cabinet fronts. Thoughtful LED lighting is placed throughout the yacht. Beautiful, modern salon furniture combines a variety of textures for a luxurious feel.

Call today to schedule a showing. Located in Ft. Lauderdale, Florida.

Basic Information

Category: Motor Yacht

Sub Category: Flybridge

Model Year: 2012

Year Built: 2012

Country: United States

Fly Bridge: Yes

Cockpit: Yes

Dimensions

LOA: 94' 0" (28.65m)

LWL: 77' 5" (23.60m)

Beam: 22' 1" (6.73m)

Max Draft: 6' 3" (1.91m)

Speed, Capacities and Weight

Cruise Speed: 25 Kts. (29 MPH)

Max Speed: 28 Kts. (32 MPH)

Displacement: 228000 Pounds

Water Capacity: 502 Gallons

Holding Tank: 470 Gallons

Fuel Capacity: 2839 Gallons

Accommodations

Total Cabins: 4

Sleeps: 10

Total Heads: 4

Crew Cabin: 2

Crew Berths: 4

Crew Sleeps: 4

Crew Heads: 2

Hull and Deck Information

Hull Material: GRP

Deck Material: Teak

Hull Configuration: Planing

Hull Color: White

Hull Designer: Sanlorenzo

Exterior Designer: Francesco Paszkowski

Interior Designer: Marty Lowe

Engine Information

Engines: 2

Manufacturer: MTU

Model: 16V2000 M84

Engine Type: Inboard

Fuel Type: Diesel

DETAILED INFORMATION

OVERVIEW

This Sanlorenzo SL94 is a stunning planing yacht. The craftsmanship of the various components of this model illustrate the incredible skill level associated with the Sanlorenzo pedigree. Built in Viareggio, Italy, Sanlorenzo yachts are considered the quietest in their category – both at sea and at the dock.

Designed for the Americas market, she has full "Americas Edition" specifications, including Zero Speed stabilizers, hydraulic swim platform, tender garage, tropicalized A/C system and hard top. Powered by MTU 16V2000 M84 main engines with 550 hours. Extended warranty until April 30 2018 on main engines and 55kW Onan generators. Sleeps 8 in 4 staterooms, or 10 using the Pullmans in the guest staterooms. Crew accommodations for up to 4.

Large exterior spaces lend to the tranquility of the cruising lifestyle. Her flybridge is fully-equipped for dining and entertaining, with a Boffi bar, TV, ice maker and fridge. Elegant Italian lounge furniture by Manutti invites guests to eat and relax simultaneously.

Interior spaces are characterized by a collection of woods, fabrics and stones designed to honor their natural beauty. Bulkheads are bleached Oak with Canalet Walnut cabinet fronts. Thoughtful LED lighting is placed throughout the yacht. Beautiful, modern salon furniture combines a variety of textures for a luxurious feel.

Engine & Mechanical

- Main Engines – 2x MTU 16V2000 M84 @ 2,185hp/ea (550 hours) **Extended engine warranty until April 30 2018**
- Bow Thruster – Electric, 400V w/881lb of thrust. Controls at pilothouse and flybridge.
- Stabilizers – CMC Marine Zero Speed electric fin stabilizing system
- Steering – ZF joystick Smart Command electric steering system with I-anchor

Electrical

- Electrical system – 127/220V
- Shore power connections – Two (2) 220V AC 100A three-phase 60Hz
- Additional 220V/100A three-phase shore power inlet at bow
- Generators – Two (2) Onan 55kw 60Hz (730 hours) **Extended generators warranty for 2000 hours or April 30 2018**
- Battery charger – 12V/25A for generator batteries
- Glendenning Cablemaster – One (1) CM8
- Frequency convertor – ASEA (220V/110V - 50 Hz/60 Hz) with seamless transfer

- Double gang 110V USA/EU outlets
- GFCI distributed in technical room, bathroom, galley and exterior

Engine Room Equipment

- Double Racor filters for generators
- Engine oil change system
- Tropicalized air conditioning system – 240,000 BTU with 2 chillers
- Watermaker – Sea Recovery 1,800 gallons/day
- Water tank purification system with active carbons
- Ozone treatment for fresh water tank
- Additional black and grey water pumps installed in by-pass
- Additional air conditioning raw water pump installed in by-pass
- Back up in line raw water pump for A/C system
- Overboard draining for A/C condensation
- Overboard venting for clothes dryer in (lieu of self-contained ventilation)
- FM200 fire system equipment (USCG approved)

Navigation Electronics

- Raymarine G Series “Platinum” navigation package (detailed list of equipment available)
- Two (2) 17” color monitors in pilothouse
- Full navigation at flybridge helm, including two (2) 15” color monitors
- Open array 4kw 48” radar
- Raymarine thermal camera for day/night vision
- Remote VHF microphones with two independent antennas
- CCTV system – Three (3) cameras, two fixed on the aft deck and one pan/tilt in the engine room. Monitors in pilothouse and crew mess area.
- Complete Apple audio/visual system

Deck & Exterior

- Extended electro-hydraulic swim platform
- Tender garage with electro-hydraulic crane (1100lb) - Max tender length is 14'
- Six (6) OceanLED underwater lights
- Aft deck and flybridge furniture by Manutti
- Dual purpose aft deck coffee tables, with pull-out tray system
- Grey deck caulking
- Additional exterior entrance door in galley area
- Large portholes in master stateroom
- Marquipt Sea Stair

- ACR RCL300 spotlight
- Freshwater connection/taps located aft and at flybridge

Flybridge

- Hard top
- Teak flybridge decks
- Sail cloth style bimini with removable stainless steel stanchions
- Boffi bar cabinet with refrigerator and icemaker
- Flat screen TV on a lift system in cabinet behind helm seat
- Manutti dining table for up to 8 guests.

Interior & Décor

- “Livable luxury” design concept by Marty Lowe
- Bleached oak and Canalet Walnut interior woodwork throughout
- Hardwood flooring throughout the main deck
- Salon focal point – free-standing sculptural grid work of leather laced with stainless steel
- Multi-purpose area forward of the salon for formal dining, media room or office
- Salon furniture by Flexform
- Lighting by Artemide
- Raw-edge bamboo marble bar top with bottle and glass storage in salon
- Bamboo marble finishing in master stateroom head (bulkhead)
- Master stateroom located aft on lower deck with his and her heads
- VIP stateroom located forward
- Twin guest staterooms located midship to port and starboard
- Pullman berths in twin guest staterooms
- Ensuite heads in all staterooms
- LED strip lighting under berths, behind headboards and in the head vanity mirrors
- Electric curtains for salon, dining/multi-purpose area and master stateroom
- Accommodations for 4 crew
- Crew's quarters located forward with direct galley entrance

Appliances

Galley

- Cooktop – Gaggenau CI491-602 (induction)
- Oven – Gaggenau EB388610
- Fusion Oven – Gaggenau BM281-711-200 (microwave/convection)
- Steam Oven – Gaggenau BS270610

- Coffeemaker – Gaggenau CM250710
- Ventilation Hood – Gaggenau AH900791
- Refrigerator/Freezer – Two (2) Subzero with Icemaker S700TCI
- Waste Disposal – Insinkerator
- Washing Machine – Miele W3003
- Dryer – Miele T8005

Dining/Multi-purpose Area

- Wine Cooler – Subzero 424
- Beverage Refrigerator - Subzero UC24R
- Dining table with uplighting at base (seats 8)

Salon Bar

- Icemaker – U-Line CLR2160
- Refrigerator – U-Line 2115R

Flybridge

- Icemaker – U-Line SS1095
- Refrigerator – Frigonautica STD42

Lower Deck

- Refrigerator – Frigonautica STD42

Tank Capacities

- Fuel: 2,839 US gallons
- Fresh Water: 502 US gallons
- Black Water: 530 US gallons
- Grey Water: 850 US gallons

Certifications & Awards

- RINA Classification including tonnage certificate
- Environmental Protection Award by ShowBoats
- "Superyacht of the Year" at the 2011 Genoa International Boat Show

Exclusions

Owner's personal belongings.

Disclaimer

The Company offers the details of this vessel or yacht in good faith but cannot guarantee or warrant the accuracy of this information nor warrant the condition of the vessel. A buyer should instruct his representatives, agents, or his surveyors, to investigate such details as the buyer desires validated. This vessel or yacht is offered subject to prior sale, price change, or withdrawal without notice.

PHOTOS

Profile (2)



Tender Garage



Flybridge



Flybridge Sliding Boffi Bar - Closed



Flybridge Sliding Boffit Bar - Open



Flybridge TV



Helm



Foredeck



Aft Deck



Aft Deck - Tables Up



Salon (1)



Salon (2)



Salon (3)



Salon Bar



Dining/Multi-purpose Area (1)



Dining/Multi-purpose Area (2)



Galley (1)



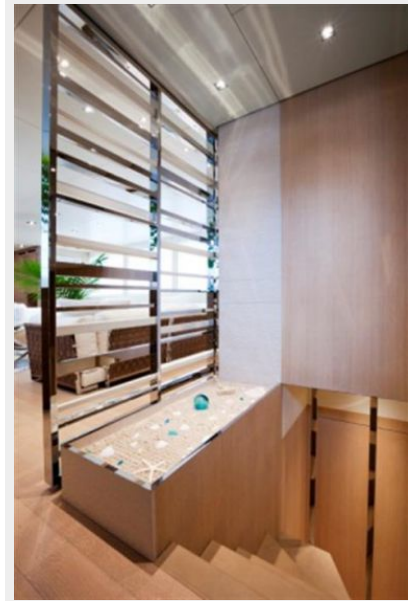
Galley (2)



Pilothouse



Staircase to Lower Deck (1)



Salon Focal Point/Divider



Staircase to Lower Deck (2)



Master Stateroom



Master Stateroom - Head Open



Master Stateroom - Head Closed



Master Shower



Corridor to Guest Staterooms



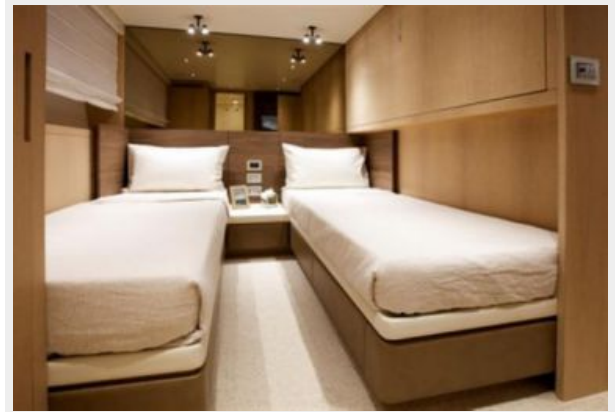
VIP Stateroom



VIP Head



Guest Stateroom



Guest Stateroom w/ Pullman down



Guest Head



Engine Room



CONTACTS

Andrey Shestakov, leading yacht broker of the sales department of Shestakov Yacht Sales Inc. Shestakov Yacht Sales Inc., the official representative of the Miami/Fort Lauderdale FL headquarters.

Contact details

Email: andrey@shestakovyachtsales.com

Web: shestakovyachtsales.com/en/

Telephones

USA: +1(954)274-4435

Office hours

Monday – Saturday: **9:00 - 21:00** EDT

Sunday: **closed**

Address



Harbour Towne Marina, 850 NE 3rd St,
STE 213, Dania, FL 33004