

## SL94 AMERICAS EDITION — SANLORENZO



**Судостроитель:** SANLORENZO

**Год постройки:** 2012

**Модель:** Моторная яхта

**Цена:** ЦЕНА ЯХТЫ ПО ЗАПРОСУ

**Местонахождение:** United States

**Длина общая:** 94' 0" (28.65m)

**Ширина:** 22' 1" (6.73m)

**Макс. осадка:** 6' 3" (1.91m)

**Крейс. скорость:** 25 Kts. (29 MPH)

**Макс. скорость:** 28 Kts. (32 MPH)

Купить **SL94 Americas Edition — SANLORENZO** а также выбрать подходящую вам яхту из нашего каталога яхт вам поможет опытный яхтенный брокер Андрей Шестаков. На сегодняшний день компания **Shestakov Yacht Sales Inc.** имеет большое количество яхт в собственном списке продаж, а также тесно сотрудничает со всеми крупными яхтенными производителями по всему миру.

Для того чтобы купить яхту **SL94 Americas Edition — SANLORENZO** а также проконсультироваться по любому вопросу связанному с покупкой, продажей, чартером яхт позвоните по телефону **+7(918)465-66-44**.

# ОГЛАВЛЕНИЕ

ОГЛАВЛЕНИЕ	2
ХАРАКТЕРИСТИКИ	5
Обзор	5
Основная информация	5
Размеры	5
Скорость, вместимость и масса	6
Размещение	6
Корпус и палуба	6
Информация о двигателе	6
ПОДРОБНОЕ ОПИСАНИЕ	7
OVERVIEW	7
Engine & Mechanical	7
Electrical	7
Engine Room Equipment	8
Navigation Electronics	8
Deck & Exterior	8
Flybridge	9
Interior & Décor	9
Appliances	9
Tank Capacities	10
Certifications & Awards	10
Исключения	10
Отказ от ответственности	11
ФОТОГРАФИИ	12
Tender Garage	12
Profile (2)	12
Flybridge	12
Flybridge Sliding Boffi Bar - Closed	12

Flybridge TV	12
Flybridge Sliding Boffit Bar - Open	12
Helm	13
Foredeck	13
Aft Deck	13
Aft Deck - Tables Up	13
Salon (1)	13
Salon (2)	13
Salon Bar	14
Salon (3)	14
Dining/Multi-purpose Area (1)	14
Dining/Multi-purpose Area (2)	14
Galley (2)	14
Galley (1)	14
Staircase to Lower Deck (1)	15
Pilothouse	15
Salon Focal Point/Divider	15
Staircase to Lower Deck (2)	15
Master Stateroom	16
Master Stateroom - Head Open	16
Master Shower	16
Master Stateroom - Head Closed	16
Corridor to Guest Staterooms	16
VIP Stateroom	16
VIP Head	17
Guest Stateroom	17
Guest Stateroom w/ Pullman down	17
Guest Head	17
Engine Room	17

---

КОНТАКТЫ	18
-----	-----
Контактная информация	18
-----	-----
Телефоны	18
-----	-----
Время работы	18
-----	-----
Адрес	18
-----	-----

# ХАРАКТЕРИСТИКИ

## Обзор

This Sanlorenzo SL94 is a stunning planing yacht. The craftsmanship of the various components of this model illustrate the incredible skill level associated with the Sanlorenzo pedigree. Built in Viareggio, Italy, Sanlorenzo yachts are considered the quietest in their category – both at sea and at the dock.

Designed for the Americas market, she has full "Americas Edition" specifications, including Zero Speed stabilizers, hydraulic swim platform, tender garage, tropicalized A/C system and hard top. Powered by MTU 16V2000 M84 main engines with 550 hours. Extended warranty until April 30 2018 on main engines and 55kW Onan generators. Sleeps 8 in 4 staterooms, or 10 using the Pullmans in the guest staterooms. Crew accommodations for up to 4.

Large exterior spaces lend to the tranquility of the cruising lifestyle. Her flybridge is fully-equipped for dining and entertaining, with a Boffi bar, TV, ice maker and fridge. Elegant Italian lounge furniture by Manutti invites guests to eat and relax simultaneously.

Interior spaces are characterized by a collection of woods, fabrics and stones designed to honor their natural beauty. Bulkheads are bleached Oak with Canalet Walnut cabinet fronts. Thoughtful LED lighting is placed throughout the yacht. Beautiful, modern salon furniture combines a variety of textures for a luxurious feel.

Call today to schedule a showing. Located in Ft. Lauderdale, Florida.

## Основная информация

<b>Тип судна:</b> Моторная яхта	<b>Подкатегория:</b> Flybridge
<b>Модельный год:</b> 2012	<b>Год постройки:</b> 2012
<b>Страна:</b> United States	<b>Открытая палуба мостика:</b> Да
<b>Кубрик:</b> Да	

## Размеры

<b>Длина общая:</b> 94' 0" (28.65m)	<b>Длина по ватерлинии:</b> 77' 5" (23.60m)
<b>Ширина:</b> 22' 1" (6.73m)	<b>Макс. осадка:</b> 6' 3" (1.91m)

## Скорость, вместимость и масса

---

**Крейс. скорость:** 25 Kts. (29 MPH)

**Макс. скорость:** 28 Kts. (32 MPH)

**Водоизмещение:** 228000 Pounds

**Вместимость воды:** 502 Gallons

**Вместимость сточного бака:** 470 Gallons **Объем топливного бака:** 2839 Gallons

## Размещение

---

**Всего кают:** 4

**Спальные места:** 10

**Всего ком. состава:** 4

**Каюты экипажа:** 2

**Койки экипажа:** 4

**Спальных мест экипажа:** 4

**Комм. состав экипажа:** 2

## Корпус и палуба

---

**Материал корпуса:** GRP

**Материал палубы:** Teak

**Комплектация корпуса:** Planing

**Цвет корпуса:** White

**Дизайнер корпуса:** Sanlorenzo

**Дизайнер экстерьера:** Francesco Paszkowski

**Дизайнер интерьера:** Marty Lowe

## Информация о двигателе

---

**Двигатели:** 2

**Производитель:** MTU

**Модель:** 16V2000 M84

**Тип двигателя:** Inboard

**Тип топлива:** Diesel

# ПОДРОБНОЕ ОПИСАНИЕ

## OVERVIEW

This Sanlorenzo SL94 is a stunning planing yacht. The craftsmanship of the various components of this model illustrate the incredible skill level associated with the Sanlorenzo pedigree. Built in Viareggio, Italy, Sanlorenzo yachts are considered the quietest in their category – both at sea and at the dock.

Designed for the Americas market, she has full "Americas Edition" specifications, including Zero Speed stabilizers, hydraulic swim platform, tender garage, tropicalized A/C system and hard top. Powered by MTU 16V2000 M84 main engines with 550 hours. Extended warranty until April 30 2018 on main engines and 55kW Onan generators. Sleeps 8 in 4 staterooms, or 10 using the Pullmans in the guest staterooms. Crew accommodations for up to 4.

Large exterior spaces lend to the tranquility of the cruising lifestyle. Her flybridge is fully-equipped for dining and entertaining, with a Boffi bar, TV, ice maker and fridge. Elegant Italian lounge furniture by Manutti invites guests to eat and relax simultaneously.

Interior spaces are characterized by a collection of woods, fabrics and stones designed to honor their natural beauty. Bulkheads are bleached Oak with Canalet Walnut cabinet fronts. Thoughtful LED lighting is placed throughout the yacht. Beautiful, modern salon furniture combines a variety of textures for a luxurious feel.

## Engine & Mechanical

- Main Engines – 2x MTU 16V2000 M84 @ 2,185hp/ea (550 hours) \*\*Extended engine warranty until April 30 2018\*\*
- Bow Thruster – Electric, 400V w/881lb of thrust. Controls at pilothouse and flybridge.
- Stabilizers – CMC Marine Zero Speed electric fin stabilizing system
- Steering – ZF joystick Smart Command electric steering system with I-anchor

## Electrical

- Electrical system – 127/220V
- Shore power connections – Two (2) 220V AC 100A three-phase 60Hz
- Additional 220V/100A three-phase shore power inlet at bow
- Generators – Two (2) Onan 55kw 60Hz (730 hours) \*\*Extended generators warranty for 2000 hours or April 30 2018\*\*
- Battery charger – 12V/25A for generator batteries
- Glendenning Cablemaster – One (1) CM8
- Frequency convertor – ASEA (220V/110V - 50 Hz/60 Hz) with seamless transfer

- Double gang 110V USA/EU outlets
- GFCI distributed in technical room, bathroom, galley and exterior

---

## Engine Room Equipment

---

- Double Racor filters for generators
- Engine oil change system
- Tropicalized air conditioning system – 240,000 BTU with 2 chillers
- Watermaker – Sea Recovery 1,800 gallons/day
- Water tank purification system with active carbons
- Ozone treatment for fresh water tank
- Additional black and grey water pumps installed in by-pass
- Additional air conditioning raw water pump installed in by-pass
- Back up in line raw water pump for A/C system
- Overboard draining for A/C condensation
- Overboard venting for clothes dryer in (lieu of self-contained ventilation)
- FM200 fire system equipment (USCG approved)

---

## Navigation Electronics

---

- Raymarine G Series “Platinum” navigation package (detailed list of equipment available)
- Two (2) 17” color monitors in pilothouse
- Full navigation at flybridge helm, including two (2) 15” color monitors
- Open array 4kw 48” radar
- Raymarine thermal camera for day/night vision
- Remote VHF microphones with two independent antennas
- CCTV system – Three (3) cameras, two fixed on the aft deck and one pan/tilt in the engine room. Monitors in pilothouse and crew mess area.
- Complete Apple audio/visual system

---

## Deck & Exterior

---

- Extended electro-hydraulic swim platform
- Tender garage with electro-hydraulic crane (1100lb) - Max tender length is 14'
- Six (6) OceanLED underwater lights
- Aft deck and flybridge furniture by Manutti
- Dual purpose aft deck coffee tables, with pull-out tray system
- Grey deck caulking
- Additional exterior entrance door in galley area
- Large portholes in master stateroom
- Marquipt Sea Stair



- ACR RCL300 spotlight
- Freshwater connection/taps located aft and at flybridge

## Flybridge

---

- Hard top
- Teak flybridge decks
- Sail cloth style bimini with removable stainless steel stanchions
- Boffi bar cabinet with refrigerator and icemaker
- Flat screen TV on a lift system in cabinet behind helm seat
- Manutti dining table for up to 8 guests.

## Interior & Décor

---

- “Livable luxury” design concept by Marty Lowe
- Bleached oak and Canalet Walnut interior woodwork throughout
- Hardwood flooring throughout the main deck
- Salon focal point – free-standing sculptural grid work of leather laced with stainless steel
- Multi-purpose area forward of the salon for formal dining, media room or office
- Salon furniture by Flexform
- Lighting by Artemide
- Raw-edge bamboo marble bar top with bottle and glass storage in salon
- Bamboo marble finishing in master stateroom head (bulkhead)
- Master stateroom located aft on lower deck with his and her heads
- VIP stateroom located forward
- Twin guest staterooms located midship to port and starboard
- Pullman berths in twin guest staterooms
- Ensuite heads in all staterooms
- LED strip lighting under berths, behind headboards and in the head vanity mirrors
- Electric curtains for salon, dining/multi-purpose area and master stateroom
- Accommodations for 4 crew
- Crew's quarters located forward with direct galley entrance

## Appliances

---

### Galley

- Cooktop – Gaggenau CI491-602 (induction)
- Oven – Gaggenau EB388610
- Fusion Oven – Gaggenau BM281-711-200 (microwave/convection)
- Steam Oven – Gaggenau BS270610

- Coffeemaker – Gaggenau CM250710
- Ventilation Hood – Gaggenau AH900791
- Refrigerator/Freezer – Two (2) Subzero with Icemaker S700TCI
- Waste Disposal – Insinkerator
- Washing Machine – Miele W3003
- Dryer – Miele T8005

### **Dining/Multi-purpose Area**

- Wine Cooler – Subzero 424
- Beverage Refrigerator - Subzero UC24R
- Dining table with uplighting at base (seats 8)

### **Salon Bar**

- Icemaker – U-Line CLR2160
- Refrigerator – U-Line 2115R

### **Flybridge**

- Icemaker – U-Line SS1095
- Refrigerator – Frigonautica STD42

### **Lower Deck**

- Refrigerator – Frigonautica STD42

---

## **Tank Capacities**

- Fuel: 2,839 US gallons
- Fresh Water: 502 US gallons
- Black Water: 530 US gallons
- Grey Water: 850 US gallons

---

## **Certifications & Awards**

- RINA Classification including tonnage certificate
- Environmental Protection Award by ShowBoats
- "Superyacht of the Year" at the 2011 Genoa International Boat Show

---

## **Исключения**

При продаже яхты исключаются личные вещи владельца.

---

## Отказ от ответственности

---

Компания предоставляет описание судна или яхты добросовестно, но не может гарантировать точность этой информации, а также не ручается за техническое состояние. Покупатель должен проинструктировать своих агентов или оценщиков исследовать представленную информацию более подробно, по собственному желанию. Продажа судна или яхты, изменение цены или снятие с продажи будет происходить без предварительного уведомления.

# ФОТОГРАФИИ

**Profile (2)**



**Tender Garage**



**Flybridge**



**Flybridge Sliding Boffi Bar - Closed**



**Flybridge Sliding Boffi Bar - Open**



**Flybridge TV**



**Helm**



**Foredeck**



**Aft Deck**



**Aft Deck - Tables Up**



**Salon (1)**



**Salon (2)**



**Salon (3)**



**Salon Bar**



**Dining/Multi-purpose Area (1)**



**Dining/Multi-purpose Area (2)**



**Galley (1)**



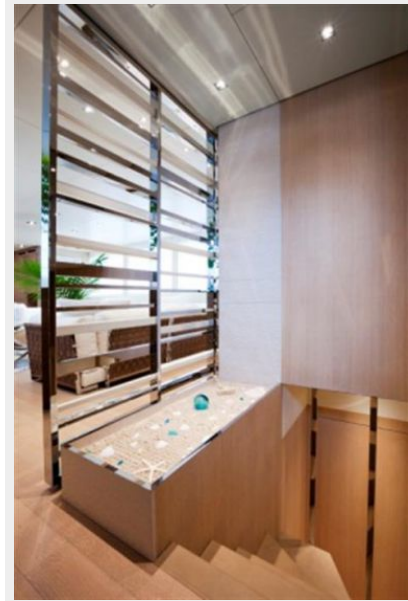
**Galley (2)**



**Pilothouse**



**Staircase to Lower Deck (1)**



**Salon Focal Point/Divider**



**Staircase to Lower Deck (2)**



**Master Stateroom**



**Master Stateroom - Head Open**



**Master Stateroom - Head Closed**



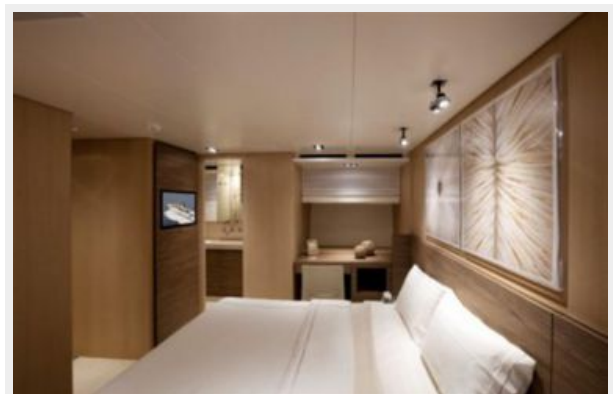
**Master Shower**



**Corridor to Guest Staterooms**



**VIP Stateroom**





**VIP Head**



**Guest Stateroom**



**Guest Stateroom w/ Pullman down**



**Guest Head**



**Engine Room**



# КОНТАКТЫ

---

Андрей Шестаков (Andrey Shestakov) – ведущий яхтенный брокер отдела продаж яхт и судов компании Shestakov Yacht Sales Inc. Официальный представитель Shestakov Yacht Sales Inc. для русскоговорящих клиентов в центральном офисе компании в Майами/Форт Лодердейл/Флорида/США.

## Контактная информация

---

Email: [andrey@shestakovyachtsales.com](mailto:andrey@shestakovyachtsales.com)

Web: [shestakovyachtsales.com](http://shestakovyachtsales.com)

## Телефоны

---

Краснодарский край: **+7(918)465-66-44**

США, Майами, Флорида: **+1(954)274-4435**

## Время работы

---

Понедельник – Суббота: **9:00 - 21:00**  
EDT

Воскресенье: **Закрето**

## Адрес

---



Harbour Towne Marina, 850 NE 3rd St,  
STE 213, Dania, FL 33004