

## PEANUT PATCH — VIKING



**Builder:** VIKING

**Year Built:** 2003

**Model:** Motor Yacht

**Price:** PRICE ON APPLICATION

**Location:** United States

**LOA:** 55' 0" (16.76m)

**Beam:** 17' 4" (5.28m)

**Max Draft:** 4' 10" (1.47m)

**Cruise Speed:** 32 Kts. (37 MPH)

**Max Speed:** 39 Kts. (45 MPH)

Our experienced yacht broker, Andrey Shestakov, will help you choose and buy a yacht that best suits your needs **Peanut Patch — VIKING** from our catalogue. Presently, at Shestakov Yacht Sales Inc., we have a wide variety of yachts available on our sale's list. We also work in close contact with all the big yacht manufacturers from all over the world.

If you would like to buy a yacht **Peanut Patch — VIKING** or would like help answering any questions concerning purchasing, selling or chartering a yacht, please call **+1(954)274-4435**

# TABLE OF CONTENTS

|                              |    |
|------------------------------|----|
| TABLE OF CONTENTS            | 2  |
| SPECIFICATIONS               | 5  |
| Overview                     | 5  |
| Basic Information            | 5  |
| Dimensions                   | 5  |
| Speed, Capacities and Weight | 5  |
| Accommodations               | 6  |
| Hull and Deck Information    | 6  |
| Engine Information           | 6  |
| DETAILED INFORMATION         | 7  |
| Accommodations               | 7  |
| Salon                        | 7  |
| Galley                       | 7  |
| Dinette                      | 8  |
| Companionway                 | 8  |
| Master Stateroom             | 8  |
| En Suite Master Head         | 9  |
| Forward VIP Stateroom        | 9  |
| Starboard Guest Stateroom    | 9  |
| Starboard Guest Head         | 9  |
| Fly Bridge                   | 9  |
| Electronics                  | 10 |
| Cockpit                      | 10 |
| Deck Exterior                | 10 |
| Mechanical                   | 11 |
| Disclaimer                   | 11 |
| Exclusions                   | 12 |
| Disclaimer                   | 12 |

|   |    |
|---|----|
| PHOTOS  | 13 |
| Viking Yachts 55' Convertible Evening Profile               | 13 |
| Viking Yachts 55' Convertible Profile                       | 13 |
| Viking Yachts 55' Convertible New Bridge Enclosure          | 13 |
| Viking Yachts 55' Convertible Stern                         | 13 |
| Viking Yachts 55' Convertible Novurania Inflatable          | 13 |
| Viking Yachts 55' Convertible Bow Profile                   | 13 |
| Viking Yachts 55' Convertible New Bridge Enclosure          | 14 |
| Viking Yachts 55' Convertible Cockpit                       | 14 |
| Viking Yachts 55' Convertible Salon                         | 14 |
| Viking Yachts 55' Convertible Salon Seating                 | 14 |
| Viking Yachts 55' Convertible Galley Salon Forward          | 14 |
| Viking Yachts 55' Convertible Salon                         | 14 |
| Viking Yachts 55' Convertible Salon Forward                 | 15 |
| Viking Yachts 55' Convertible Salon Seating                 | 15 |
| Viking Yachts 55' Convertible Guest Stateroom               | 15 |
| Viking Yachts 55' Convertible Galley Seating                | 15 |
| Viking Yachts 55' Convertible Guest Stateroom               | 15 |
| Viking Yachts 55' Convertible Master Stateroom              | 15 |
| Viking Yachts 55' Convertible Master Stateroom              | 16 |
| Viking Yachts 55' Convertible Master Head                   | 16 |
| Viking Yachts 55' Convertible Master Head Vanity and Shower | 16 |
| Viking Yachts 55' Convertible VIP Stateroom                 | 16 |
| Viking Yachts 55' Convertible VIP Head                      | 16 |
| Viking Yachts 55' Convertible VIP Head Shower               | 16 |
| Viking Yachts 55' Hallway to Forward Staterooms             | 17 |
| Viking Yachts 55' Convertible VIP Stateroom                 | 17 |
| Viking Yachts 55' Convertible Helm Electronics              | 17 |
| Viking Yachts 55' Convertible Helm                          | 17 |

---

|   |           |
|---|-----------|
| Viking Yachts 55' Convertible Helm                              | 17        |
| Viking Yachts 55' Convertible Helm                              | 17        |
| Viking Yachts 55' Convertible Bridge Seating                    | 18        |
| Viking Yachts 55' Convertible Bridge Seating                    | 18        |
| Viking Yachts 55' Convertible Deck Profile                      | 18        |
| Viking Yachts 55' Convertible Helm Seating                      | 18        |
| Viking Yachts 55' Convertible Bridge Seating                    | 18        |
| Viking Yachts 55' Convertible Stern View with Underwater Lights | 18        |
| Viking Yachts 55' Convertible Underwater Lights                 | 19        |
| Viking Yachts 55' Convertible Engine Room                       | 19        |
| Viking Yachts 55' Convertible Engine Room                       | 19        |
| Viking Yachts 55' Convertible Engine Room                       | 19        |
| Viking Yachts 55' Convertible Engine Room                       | 19        |
| <b>CONTACTS</b>   | <b>20</b> |
| Contact details   | 20        |
| Telephones  | 20        |
| Office hours  | 20        |
| Address   | 20        |

---

# SPECIFICATIONS

---

## Overview

---

### MAJOR PRICE REDUCTION

"Peanut Patch" is a one owner, super clean Viking 55' Convertible that has never been fished. This Viking is a Low Hour, High Quality Yacht in her "Prime." She was built for, and used by, a very experienced yachtsman with cruising comfort in mind. This is the only Viking 55' on the market with a "booth style" dinette in the salon/galley area. Each year this Viking received an 'Open Checkbook Policy' Annual Service here at Bluewater Yachts Service Facility. This is one of many reasons "Peanut Patch" is considered at the top of her class!

## Basic Information

---

**Category:** Motor Yacht

**Sub Category:** Yacht Fisherman

**Model Year:** 2003

**Year Built:** 2003

**Country:** United States

## Dimensions

---

**LOA:** 55' 0" (16.76m)

**Beam:** 17' 4" (5.28m)

**Max Draft:** 4' 10" (1.47m)

**Clearance:** 19' 10" (6.05m)

**MFG Length:** 55' 10" (17.02m)

## Speed, Capacities and Weight

---

**Cruise Speed:** 32 Kts. (37 MPH)

**Max Speed:** 39 Kts. (45 MPH)

**Displacement:** 68800 Pounds

**Water Capacity:** 250 Gallons

**Fuel Capacity:** 1250 Gallons

---

## Accommodations

---

**Total Cabins:** 3

**Total Heads:** 2

---

## Hull and Deck Information

---

**Hull Material:** Fiberglass

---

## Engine Information

---

**Engines:** 2

**Manufacturer:** MAN

**Model:** 2842LE404

**Engine Type:** Inboard

**Fuel Type:** Diesel

---

# DETAILED INFORMATION

---

## Accommodations

---

Sleeping accommodations for 6 owners and guests in 3 staterooms. The master stateroom is located mid ship and down to port. Featuring a center line queen berth with designer bedding, high gloss teak cabinetry, tons of storage, color TV and a large master en suite with a Vacu- flush head and private stall shower. The VIP stateroom is located forward and features 2 staggered double berths, high gloss teak cabinetry, lots of storage, cedar lined hanging lockers and access to the guest head. Mid ship to starboard is the guest head with dual access and its own stall shower. Also mid ship is the guest stateroom with over and under bunks, storage and cedar lined hanging locker. Aft of the guest stateroom, in a companion way cabinet, is a stackable washer and dryer. The galley is up to port and features Corian counter tops, teak & holly flooring, and a Sub-Zero pull out refrigerator/freezer. The salon is quite large with a wrap around dinette, an L-shaped leather sofa with inside storage, a custom teak high/low table, full entertainment center with color TV, stereo, CD changer, and more than ample storage. The entire interior is finished with top quality fabrics, and features custom valances, custom blinds, recessed lighting, high quality carpet; The List goes ON and ON!

## Salon

---

- Luxury Edition Décor
- Amtico Teak & Holly flooring at salon entrance
- Custom Teak Coffee Table with Fish Inlay
- Upgrade audio/video to Viking Theater System – surround sound entertainment
- Tinted windows
- L-shaped lounge with plenty of under couch storage
- Electrical panel up
- 42" Flatscreen TV
- Upgraded style sofa
- Overhead lighting
- Indirect lighting
- Current style A/C discharge in valances
- Storage cabinets and drawers

## Galley

---

- Under counter Sub-Zero refrigeration (4 drawers)
- Under counter Sub-Zero freezer (2 drawers)
- Sub-Zero ice maker in 2nd freezer
- Amtico Teak & Holly galley floor

- Exhaust fan
- Microwave/Convection oven
- Fresh water level gauge
- Grohe faucet
- Garbage disposal
- Instant hot water
- Mirrored galley back-splash
- Recessed Electric 3 burner range
- Corian countertop & sink
- Plenty of storage cabinets and drawers

---

## Dinette

- Seating in upgraded ultra-leather material
- Teak dining table
- Storage under dining seating

---

## Companionway

- Full sized separate washer and dryer units
- Wrapped carpet installation around hatches
- Central vacuum
- Access to guest head

---

## Master Stateroom

- Island queen berth with full storage below
- Full size hanging locker
- Flat Screen TV
- Port side drawers and cabinet storage
- Full size dresser with drawers and cabinet IPO vanity
- En suite head
- Deck hatch with ocean air screen/shade
- Custom Orthopedic mattress
- Overhead lighting
- Indirect lighting
- Reading lights
- Bedside table lamps
- Luxury edition bedspreads, shams



---

## En Suite Master Head

---

- Large shower
- Wallpaper with boarder
- Under sink storage cabinet
- Linen locker
- Mirrored medicine cabinet

---

## Forward VIP Stateroom

---

- VIP layout – double bed (starboard) single bed (port)
- Custom Orthopedic mattresses
- Luxury edition bedspreads, shams
- Storage cabinets and drawers
- Hanging locker
- Built in TV/VCR
- Ocean Air screen and shade for deck hatch
- Access to guest head

---

## Starboard Guest Stateroom

---

- Upper and lower berths
- Ocean Air screen/shade for deck hatch
- Access to guest head
- Walk in closet (cedar lined)
- Drawers

---

## Starboard Guest Head

---

- Full shower
- Storage cabinet under sink
- Mirrored medicine cabinet

---

## Fly Bridge

---

- 4 sided enclosure – track to track (New 2014)
- 2 Murry Brothers helm chairs
- Large bench seat to port with storage below
- L shaped bench seat forward with storage below
- Refrigerated chill box

- Custom Light Mast
- Safety monitoring system
- 6 rod rocket launcher

---

## Electronics

---

- Compass
- Garmin 5212 Touch Screen GPS/Fish Finder
- (2) Icom M-602 VHF radios
- Furuno 7062 Radar
- Furuno RD30 Depth/GPS
- ACR RCL-100 remote spotlight
- Robertson AP22 autopilot
- SAT TV

---

## Cockpit

---

- Engine room door
- Indirect lighting
- Overhead lighting
- New cockpit carpeting
- Quartz lights
- Cable TV connect
- Fresh water connect
- Cablemaster
- Tackle storage drawers
- Cockpit refrigerator / freezer
- Fresh water washdown
- Sea water washdown
- Stepbox with storage
- Speakers
- Transom door with lift gate
- Cockpit step storage
- Swimplatform with ladder
- (4) coaming rod holder

---

## Deck Exterior

---

- Hull & Deck was Awlgrip painted 2008
- Novurania inflatable dinghy
- Full custom dingy cover

- Bow Davit
- Ocean LED underwater light
- Custom hardtop mast
- Low profile hatches

---

## Mechanical

---

- Awlgrip finished engine room
- Air circulation fans
- Onan generator
- Bonded electrical system
- Battery charger
- Battery parallell
- 110V fresh water pump
- Glendinning engine synchronizer
- Dual Racor fuel/water seperators
- Fire protection system
- Gauge package at engine room entrance
- Bilge pumps
- Blowers
- Fuel system priming pumps
- Fuel polishing system
- Oil changing system
- Fiberglass fuel and water tanks
- Water heater
- Dripless shaftlogs

---

## Disclaimer

---

While we attempt to display current and accurate data, this listing may not reflect the most recent transactions or may contain occasional data entry errors. Selling agent makes no warranties, express or implied, regarding the content or availability of the products described herein. All inventory listed is subject to availability and prior sale. Please consult selling agent for details. Prices are quoted for the USA only and may not include transportation, taxes, or other applicable charges. Photographs may be representative only and may vary somewhat from the actual items offered for sale. We will not be responsible for inaccurate data obtained from our site. Please check with your local dealer to ensure that you have the latest information available. Information on this web site could include technical inaccuracies or typographical errors. Changes may be periodically made to the information or the products herein. Questions or comments regarding these policies may be directed to website hosting agent.

---

## Exclusions

---

Owner's personal belongings.

---

## Disclaimer

---

The Company offers the details of this vessel or yacht in good faith but cannot guarantee or warrant the accuracy of this information nor warrant the condition of the vessel. A buyer should instruct his representatives, agents, or his surveyors, to investigate such details as the buyer desires validated. This vessel or yacht is offered subject to prior sale, price change, or withdrawal without notice.

# PHOTOS

**Viking Yachts 55' Convertible Profile**



**Viking Yachts 55' Convertible Evening Profile**



**Viking Yachts 55' Convertible Stern**



**Viking Yachts 55' Convertible New Bridge Enclosure**



**Viking Yachts 55' Convertible Novurania Inflatable**



**Viking Yachts 55' Convertible Bow Profile**



**Viking Yachts 55' Convertible New Bridge Enclosure**



**Viking Yachts 55' Convertible Cockpit**



**Viking Yachts 55' Convertible Salon**



**Viking Yachts 55' Convertible Salon Seating**



**Viking Yachts 55' Convertible Galley Salon Forward**



**Viking Yachts 55' Convertible Salon**



**Viking Yachts 55' Convertible Salon Seating**



**Viking Yachts 55' Convertible Salon Forward**



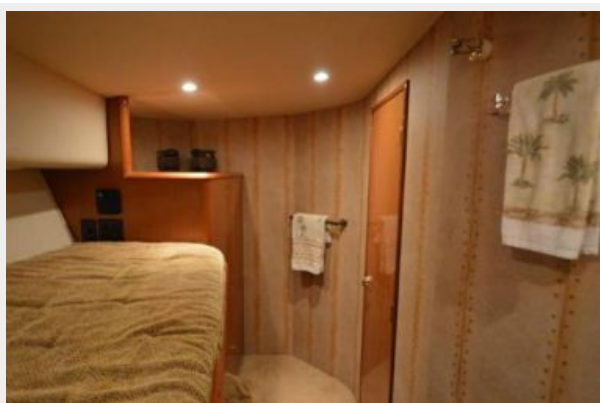
**Viking Yachts 55' Convertible Galley Seating**



**Viking Yachts 55' Convertible Guest Stateroom**



**Viking Yachts 55' Convertible Guest Stateroom**



**Viking Yachts 55' Convertible Master Stateroom**



**Viking Yachts 55' Convertible Master Stateroom**



**Viking Yachts 55' Convertible Master Head**



**Viking Yachts 55' Convertible Master Head Vanity and Shower**



**Viking Yachts 55' Convertible VIP Stateroom**



**Viking Yachts 55' Convertible VIP Head**



**Viking Yachts 55' Convertible VIP Head Shower**

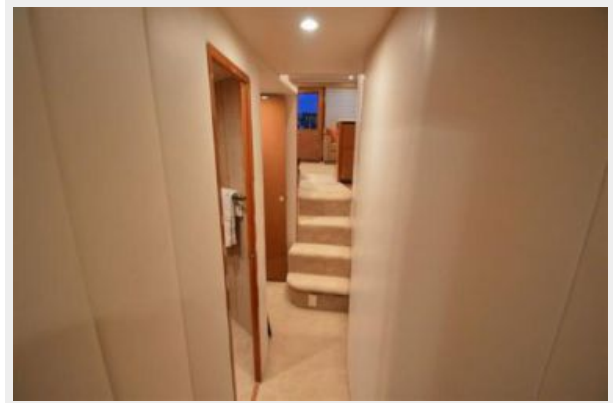




**Viking Yachts 55' Convertible VIP Stateroom**



**Viking Yachts 55' Hallway to Forward Staterooms**



**Viking Yachts 55' Convertible Helm Electronics**



**Viking Yachts 55' Convertible Helm**



**Viking Yachts 55' Convertible Helm**



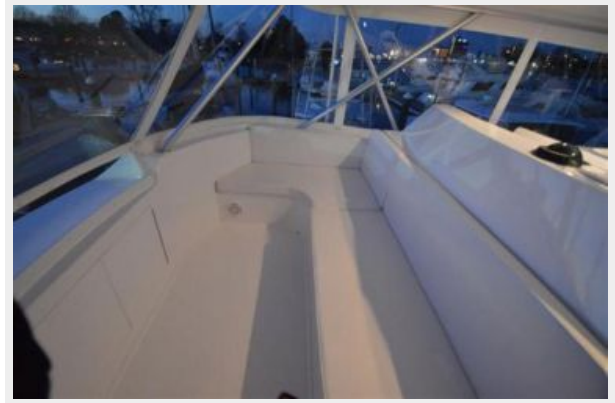
**Viking Yachts 55' Convertible Helm**



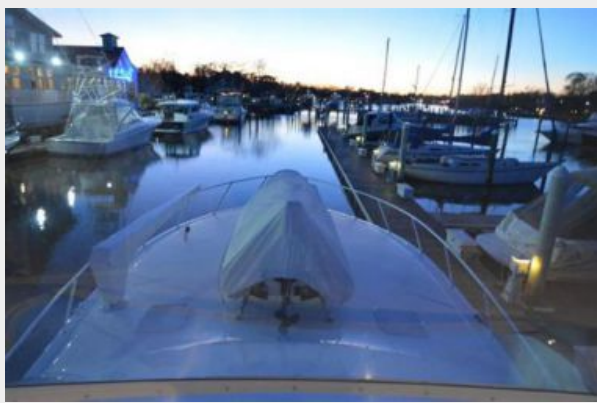
**Viking Yachts 55' Convertible Bridge Seating**



**Viking Yachts 55' Convertible Bridge Seating**



**Viking Yachts 55' Convertible Deck Profile**



**Viking Yachts 55' Convertible Helm Seating**



**Viking Yachts 55' Convertible Bridge Seating**



**Viking Yachts 55' Convertible Stern View with Underwater Lights**



**Viking Yachts 55' Convertible Underwater Lights**



**Viking Yachts 55' Convertible Engine Room**



**Viking Yachts 55' Convertible Engine Room** **Viking Yachts 55' Convertible Engine Room**



**Viking Yachts 55' Convertible Engine Room**



# CONTACTS

---

Andrey Shestakov, leading yacht broker of the sales department of Shestakov Yacht Sales Inc. Shestakov Yacht Sales Inc., the official representative of the Miami/Fort Lauderdale FL headquarters.

## Contact details

---

Email: [andrey@shestakovyachtsales.com](mailto:andrey@shestakovyachtsales.com)

Web: [shestakovyachtsales.com/en/](http://shestakovyachtsales.com/en/)

## Telephones

---

USA: +1(954)274-4435

## Office hours

---

Monday – Saturday: **9:00 - 21:00** EDT

Sunday: **closed**

## Address

---



Harbour Towne Marina, 850 NE 3rd St,  
STE 213, Dania, FL 33004