

PEANUT PATCH — VIKING



Судостроитель: VIKING

Год постройки: 2003

Модель: Моторная яхта

Цена: **ЦЕНА ЯХТЫ ПО ЗАПРОСУ**

Местонахождение: United States

Длина общая: 55' 0" (16.76m)

Ширина: 17' 4" (5.28m)

Макс. осадка: 4' 10" (1.47m)

Крейс. скорость: 32 Kts. (37 MPH)

Макс. скорость: 39 Kts. (45 MPH)

Купить **Peanut Patch — VIKING** а также выбрать подходящую вам яхту из нашего каталога яхт вам поможет опытный яхтенный брокер Андрей Шестаков. На сегодняшний день компания **Shestakov Yacht Sales Inc.** имеет большое количество яхт в собственном списке продаж, а также тесно сотрудничает со всеми крупными яхтенными производителями по всему миру.

Для того чтобы купить яхту **Peanut Patch — VIKING** а также проконсультироваться по любому вопросу связанному с покупкой, продажей, чартером яхт позвоните по телефону **+7(918)465-66-44**.

ОГЛАВЛЕНИЕ

ОГЛАВЛЕНИЕ	2
ХАРАКТЕРИСТИКИ	5
Обзор	5
Основная информация	5
Размеры	5
Скорость, вместимость и масса	5
Размещение	6
Корпус и палуба	6
Информация о двигателе	6
ПОДРОБНОЕ ОПИСАНИЕ	7
Accommodations	7
Salon	7
Galley	7
Dinette	8
Companionway	8
Master Stateroom	8
En Suite Master Head	9
Forward VIP Stateroom	9
Starboard Guest Stateroom	9
Starboard Guest Head	9
Fly Bridge	9
Electronics	10
Cockpit	10
Deck Exterior	10
Mechanical	11
Disclaimer	11
Исключения	12
Отказ от ответственности	12

ФОТОГРАФИИ	13
Viking Yachts 55' Convertible Evening Profile	13
Viking Yachts 55' Convertible Profile	13
Viking Yachts 55' Convertible New Bridge Enclosure	13
Viking Yachts 55' Convertible Stern	13
Viking Yachts 55' Convertible Novurania Inflatable	13
Viking Yachts 55' Convertible Bow Profile	13
Viking Yachts 55' Convertible New Bridge Enclosure	14
Viking Yachts 55' Convertible Cockpit	14
Viking Yachts 55' Convertible Salon	14
Viking Yachts 55' Convertible Salon Seating	14
Viking Yachts 55' Convertible Galley Salon Forward	14
Viking Yachts 55' Convertible Salon	14
Viking Yachts 55' Convertible Salon Forward	15
Viking Yachts 55' Convertible Salon Seating	15
Viking Yachts 55' Convertible Guest Stateroom	15
Viking Yachts 55' Convertible Galley Seating	15
Viking Yachts 55' Convertible Guest Stateroom	15
Viking Yachts 55' Convertible Master Stateroom	15
Viking Yachts 55' Convertible Master Stateroom	16
Viking Yachts 55' Convertible Master Head	16
Viking Yachts 55' Convertible Master Head Vanity and Shower	16
Viking Yachts 55' Convertible VIP Stateroom	16
Viking Yachts 55' Convertible VIP Head	16
Viking Yachts 55' Convertible VIP Head Shower	16
Viking Yachts 55' Hallway to Forward Staterooms	17
Viking Yachts 55' Convertible VIP Stateroom	17
Viking Yachts 55' Convertible Helm Electronics	17
Viking Yachts 55' Convertible Helm	17

Viking Yachts 55' Convertible Helm	17
Viking Yachts 55' Convertible Helm	17
Viking Yachts 55' Convertible Bridge Seating	18
Viking Yachts 55' Convertible Bridge Seating	18
Viking Yachts 55' Convertible Deck Profile	18
Viking Yachts 55' Convertible Helm Seating	18
Viking Yachts 55' Convertible Bridge Seating	18
Viking Yachts 55' Convertible Stern View with Underwater Lights	18
Viking Yachts 55' Convertible Underwater Lights	19
Viking Yachts 55' Convertible Engine Room	19
Viking Yachts 55' Convertible Engine Room	19
Viking Yachts 55' Convertible Engine Room	19
Viking Yachts 55' Convertible Engine Room	19
КОНТАКТЫ	20
Контактная информация	20
Телефоны	20
Время работы	20
Адрес	20

ХАРАКТЕРИСТИКИ

Обзор

MAJOR PRICE REDUCTION

"Peanut Patch" is a one owner, super clean Viking 55' Convertible that has never been fished. This Viking is a Low Hour, High Quality Yacht in her "Prime." She was built for, and used by, a very experienced yachtsman with cruising comfort in mind. This is the only Viking 55' on the market with a "booth style" dinette in the salon/galley area. Each year this Viking received an 'Open Checkbook Policy' Annual Service here at Bluewater Yachts Service Facility. This is one of many reasons "Peanut Patch" is considered at the top of her class!

Основная информация

Тип судна: Моторная яхта

Подкатегория: Yacht Fisherman

Модельный год: 2003

Год постройки: 2003

Страна: United States

Размеры

Длина общая: 55' 0" (16.76m)

Ширина: 17' 4" (5.28m)

Макс. осадка: 4' 10" (1.47m)

Трапы: 19' 10" (6.05m)

Длина привального бруса: 55' 10"
(17.02m)

Скорость, вместимость и масса

Крейс. скорость: 32 Kts. (37 MPH)

Макс. скорость: 39 Kts. (45 MPH)

Водоизмещение: 68800 Pounds

Вместимость воды: 250 Gallons

Объем топливного бака: 1250 Gallons

Размещение

Всего кают: 3

Всего ком. состава: 2

Корпус и палуба

Материал корпуса: Fiberglass

Информация о двигателе

Двигатели: 2

Производитель: MAN

Модель: 2842LE404

Тип двигателя: Inboard

Тип топлива: Diesel

ПОДРОБНОЕ ОПИСАНИЕ

Accommodations

Sleeping accommodations for 6 owners and guests in 3 staterooms. The master stateroom is located mid ship and down to port. Featuring a center line queen berth with designer bedding, high gloss teak cabinetry, tons of storage, color TV and a large master en suite with a Vacu-flush head and private stall shower. The VIP stateroom is located forward and features 2 staggered double berths, high gloss teak cabinetry, lots of storage, cedar lined hanging lockers and access to the guest head. Mid ship to starboard is the guest head with dual access and its own stall shower. Also mid ship is the guest stateroom with over and under bunks, storage and cedar lined hanging locker. Aft of the guest stateroom, in a companion way cabinet, is a stackable washer and dryer. The galley is up to port and features Corian counter tops, teak & holly flooring, and a Sub-Zero pull out refrigerator/freezer. The salon is quite large with a wrap around dinette, an L-shaped leather sofa with inside storage, a custom teak high/low table, full entertainment center with color TV, stereo, CD changer, and more than ample storage. The entire interior is finished with top quality fabrics, and features custom valances, custom blinds, recessed lighting, high quality carpet; The List goes ON and ON!

Salon

- Luxury Edition Décor
- Amtico Teak & Holly flooring at salon entrance
- Custom Teak Coffee Table with Fish Inlay
- Upgrade audio/video to Viking Theater System – surround sound entertainment
- Tinted windows
- L-shaped lounge with plenty of under couch storage
- Electrical panel up
- 42" Flatscreen TV
- Upgraded style sofa
- Overhead lighting
- Indirect lighting
- Current style A/C discharge in valances
- Storage cabinets and drawers

Galley

- Under counter Sub-Zero refrigeration (4 drawers)
- Under counter Sub-Zero freezer (2 drawers)
- Sub-Zero ice maker in 2nd freezer
- Amtico Teak & Holly galley floor

- Exhaust fan
- Microwave/Convection oven
- Fresh water level gauge
- Grohe faucet
- Garbage disposal
- Instant hot water
- Mirrored galley back-splash
- Recessed Electric 3 burner range
- Corian countertop & sink
- Plenty of storage cabinets and drawers

Dinette

- Seating in upgraded ultra-leather material
- Teak dining table
- Storage under dining seating

Companionway

- Full sized separate washer and dryer units
- Wrapped carpet installation around hatches
- Central vacuum
- Access to guest head

Master Stateroom

- Island queen berth with full storage below
- Full size hanging locker
- Flat Screen TV
- Port side drawers and cabinet storage
- Full size dresser with drawers and cabinet IPO vanity
- En suite head
- Deck hatch with ocean air screen/shade
- Custom Orthopedic mattress
- Overhead lighting
- Indirect lighting
- Reading lights
- Bedside table lamps
- Luxury edition bedspreads, shams

En Suite Master Head

- Large shower
- Wallpaper with boarder
- Under sink storage cabinet
- Linen locker
- Mirrored medicine cabinet

Forward VIP Stateroom

- VIP layout – double bed (starboard) single bed (port)
- Custom Orthopedic mattresses
- Luxury edition bedspreads, shams
- Storage cabinets and drawers
- Hanging locker
- Built in TV/VCR
- Ocean Air screen and shade for deck hatch
- Access to guest head

Starboard Guest Stateroom

- Upper and lower berths
- Ocean Air screen/shade for deck hatch
- Access to guest head
- Walk in closet (cedar lined)
- Drawers

Starboard Guest Head

- Full shower
- Storage cabinet under sink
- Mirrored medicine cabinet

Fly Bridge

- 4 sided enclosure – track to track (New 2014)
- 2 Murry Brothers helm chairs
- Large bench seat to port with storage below
- L shaped bench seat forward with storage below
- Refrigerated chill box

- Custom Light Mast
- Safety monitoring system
- 6 rod rocket launcher

Electronics

- Compass
- Garmin 5212 Touch Screen GPS/Fish Finder
- (2) Icom M-602 VHF radios
- Furuno 7062 Radar
- Furuno RD30 Depth/GPS
- ACR RCL-100 remote spotlight
- Robertson AP22 autopilot
- SAT TV

Cockpit

- Engine room door
- Indirect lighting
- Overhead lighting
- New cockpit carpeting
- Quartz lights
- Cable TV connect
- Fresh water connect
- Cablemaster
- Tackle storage drawers
- Cockpit refrigerator / freezer
- Fresh water washdown
- Sea water washdown
- Stepbox with storage
- Speakers
- Transom door with lift gate
- Cockpit step storage
- Swimplatform with ladder
- (4) coaming rod holder

Deck Exterior

- Hull & Deck was Awlgrip painted 2008
- Novurania inflatable dinghy
- Full custom dingy cover

- Bow Davit
- Ocean LED underwater light
- Custom hardtop mast
- Low profile hatches

Mechanical

- Awlgrip finished engine room
- Air circulation fans
- Onan generator
- Bonded electrical system
- Battery charger
- Battery paralell
- 110V fresh water pump
- Glendinning engine synchronizer
- Dual Racor fuel/water seperators
- Fire protection system
- Gauge package at engine room entrance
- Bilge pumps
- Blowers
- Fuel system priming pumps
- Fuel polishing system
- Oil changing system
- Fiberglass fuel and water tanks
- Water heater
- Dripless shaftlogs

Disclaimer

While we attempt to display current and accurate data, this listing may not reflect the most recent transactions or may contain occasional data entry errors. Selling agent makes no warranties, express or implied, regarding the content or availability of the products described herein. All inventory listed is subject to availability and prior sale. Please consult selling agent for details. Prices are quoted for the USA only and may not include transportation, taxes, or other applicable charges. Photographs may be representative only and may vary somewhat from the actual items offered for sale. We will not be responsible for inaccurate data obtained from our site. Please check with your local dealer to ensure that you have the latest information available. Information on this web site could include technical inaccuracies or typographical errors. Changes may be periodically made to the information or the products herein. Questions or comments regarding these policies may be directed to website hosting agent.

Исключения

При продаже яхты исключаются личные вещи владельца.

Отказ от ответственности

Компания предоставляет описание судна или яхты добросовестно, но не может гарантировать точность этой информации, а также не ручается за техническое состояние. Покупатель должен проинструктировать своих агентов или оценщиков исследовать представленную информацию более подробно, по собственному желанию. Продажа судна или яхты, изменение цены или снятие с продажи будет происходить без предварительного уведомления.

ФОТОГРАФИИ

Viking Yachts 55' Convertible Profile



Viking Yachts 55' Convertible Evening Profile



Viking Yachts 55' Convertible Stern



Viking Yachts 55' Convertible New Bridge Enclosure



Viking Yachts 55' Convertible Novurania Inflatable



Viking Yachts 55' Convertible Bow Profile



Viking Yachts 55' Convertible New Bridge Enclosure



Viking Yachts 55' Convertible Cockpit



Viking Yachts 55' Convertible Salon



Viking Yachts 55' Convertible Salon Seating



Viking Yachts 55' Convertible Galley Salon Forward



Viking Yachts 55' Convertible Salon



Viking Yachts 55' Convertible Salon Seating



Viking Yachts 55' Convertible Salon Forward



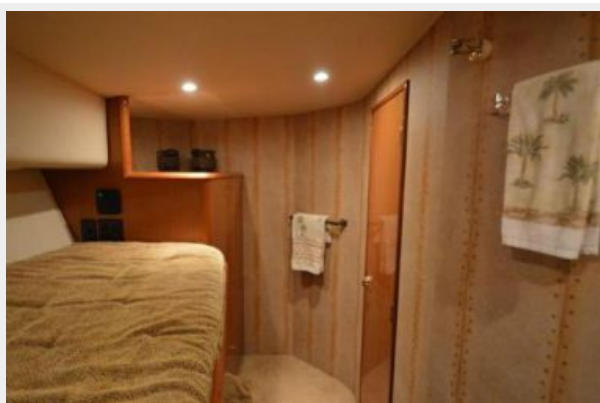
Viking Yachts 55' Convertible Galley Seating



Viking Yachts 55' Convertible Guest Stateroom



Viking Yachts 55' Convertible Guest Stateroom



Viking Yachts 55' Convertible Master Stateroom



Viking Yachts 55' Convertible Master Stateroom



Viking Yachts 55' Convertible Master Head



Viking Yachts 55' Convertible Master Head Vanity and Shower



Viking Yachts 55' Convertible VIP Stateroom



Viking Yachts 55' Convertible VIP Head



Viking Yachts 55' Convertible VIP Head Shower



Viking Yachts 55' Convertible VIP Stateroom



Viking Yachts 55' Hallway to Forward Staterooms



Viking Yachts 55' Convertible Helm Electronics



Viking Yachts 55' Convertible Helm



Viking Yachts 55' Convertible Helm



Viking Yachts 55' Convertible Helm



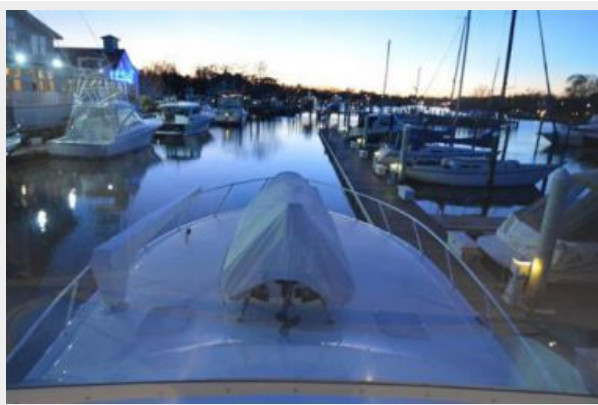
Viking Yachts 55' Convertible Bridge Seating



Viking Yachts 55' Convertible Bridge Seating



Viking Yachts 55' Convertible Deck Profile



Viking Yachts 55' Convertible Helm Seating



Viking Yachts 55' Convertible Bridge Seating



Viking Yachts 55' Convertible Stern View with Underwater Lights



Viking Yachts 55' Convertible Underwater Lights



Viking Yachts 55' Convertible Engine Room



Viking Yachts 55' Convertible Engine Room **Viking Yachts 55' Convertible Engine Room**



Viking Yachts 55' Convertible Engine Room



КОНТАКТЫ

Андрей Шестаков (Andrey Shestakov) – ведущий яхтенный брокер отдела продаж яхт и судов компании Shestakov Yacht Sales Inc. Официальный представитель Shestakov Yacht Sales Inc. для русскоговорящих клиентов в центральном офисе компании в Майами/Форт Лодердейл/Флорида/США.

Контактная информация

Email: andrey@shestakovyachtsales.com

Web: shestakovyachtsales.com

Телефоны

Краснодарский край: **+7(918)465-66-44**

США, Майами, Флорида: **+1(954)274-4435**

Время работы

Понедельник – Суббота: **9:00 - 21:00**
EDT

Воскресенье: **Закрито**

Адрес



Harbour Towne Marina, 850 NE 3rd St,
STE 213, Dania, FL 33004