

LA VAINA — SEA RAY



Builder: SEA RAY

Year Built: 2005

Model: Cruiser

Price: PRICE ON APPLICATION

Location: United States

LOA: 37' 6" (11.43m)

Beam: 12' 0" (3.66m)

Max Draft: 3' 0" (0.91m)

Cruise Speed: 27 Kts. (31 MPH)

Our experienced yacht broker, Andrey Shestakov, will help you choose and buy a yacht that best suits your needs **La Vaina — SEA RAY** from our catalogue. Presently, at Shestakov Yacht Sales Inc., we have a wide variety of yachts available on our sale's list. We also work in close contact with all the big yacht manufacturers from all over the world.

If you would like to buy a yacht **La Vaina — SEA RAY** or would like help answering any questions concerning purchasing, selling or chartering a yacht, please call **+1(954)274-4435**

TABLE OF CONTENTS

TABLE OF CONTENTS	2
SPECIFICATIONS	3
Overview	3
Basic Information	3
Dimensions	3
Speed, Capacities and Weight	4
Accommodations	4
Hull and Deck Information	4
Engine Information	4
DETAILED INFORMATION	5
Broker Comments & Service Updates	5
Test Results	5
Optional Features	5
Hull & Deck Features	6
Cockpit Features	7
Cabin Features	8
Technical Features	9
Exclusions	11
Disclaimer	12
PHOTOS	13
CONTACTS	25
Contact details	25
Telephones	25
Office hours	25
Address	25

SPECIFICATIONS

Overview

Just Reduced \$10,000... **BOW THRUSTER** and **AUTO PILOT** make this an extraordinary one of a kind 34 foot Sundancer and Best Value on the Market. She was commissioned by a Sea Ray executive so you will find that attention to detail is exceptional. Kept in high and dry storage its entire life, the boat has been preserved in immaculate condition. Sundancers are known for their wide beams, deep V hulls, and sleek styling, which makes cruising to your favorite destination a pleasure. Unless you have studied the subtle differences in the 2005 through 2010 Sea Ray 340 models, you won't be able to tell the age of this beauty. Topside highlights include wraparound cockpit seating, transom storage locker, and extended swim platform. The Twin seat helm has lots of dash space for the flush mounted electronics. A Power hatch makes engine access easy. Twin Mercruiser 496 Mag I/Os (Stern drive) cruise at 38 knots (50 MPH top). The cockpit upholstery is in immaculate condition, and the engine room is kept spotless. Step inside the Salon and take a look at the spacious interior, which shows the exceptional care that this beauty has received since new. The polished mid cabin interior with cherry cabinetry gets high marks for quality appliances, exceptional fit, and finish. This beauty is equipped with a fully integrated suite of Raymarine electronics, including GPS, Chartplotter, Radar, Autopilot, and VHF. The A/C system will keep you cool on the hottest of summer days whether at the dock or underway with the GenSet running. The engines run like new. If you are in the market for a Sea Ray 340, you owe it to yourself to take a close look at this beauty because you won't be disappointed, in addition to saving thousands of dollars as well as having a great boat at a fraction of the cost of a new one.

Basic Information

Category: Cruiser

Model Year: 2005

Year Built: 2005

Country: United States

Dimensions

LOA: 37' 6" (11.43m)

Beam: 12' 0" (3.66m)

Max Draft: 3' 0" (0.91m)

Clearance: 11' 8" (3.56m)

Speed, Capacities and Weight

Cruise Speed: 27 Kts. (31 MPH)

Water Capacity: 45 Gallons

Holding Tank: 28 Gallons

Fuel Capacity: 225 Gallons

Accommodations

Total Cabins: 1

Hull and Deck Information

Hull Material: Fiberglass

Engine Information

Engines: 2

Manufacturer: Mercruiser

Model: 8.1L Horizon

Engine Type: I/O

Fuel Type: Gas/Petrol

DETAILED INFORMATION

Broker Comments & Service Updates

- New Long-Block on Port Engine – 39 hours
- Starboard Engine 685 hours
- BRAVO III Stern-drive – Quick & Efficient
- Blue Hull – Mirror Like Finish
- Vetus Bow Thruster (UPGRADE)
- 5kW Kohler Generator 278 hours
- Generator – Serviced 05/2014
 - Impeller Kit
 - Annual Service
- Engine – Serviced 5/2014
 - Impellers Replaced
 - New Shift Cables
 - Temp Sensor Replaced
 - Anode Kit New
 - Drives Service
 - Spark Plugs Replace
 - Oil & Filters
- Starboard Upper Gearcase Seal Kit Replaced 11/2014
- Detailed inside and outside 12/2014
- New Batteries 12/2013

Test Results

RPM	GPH	MPH
1000	4.0	6.2
1500	7	8.7
2000	11.8	10.4
2500	18.6	13.0
3000	24.8	20.8
3500	30	31.0
4000	37	36.5
4750	59	44.9

Optional Features

- Auxiliary Port for Video Gaming System

- Dash, Gel Coated – Tan
- Base & Rod Holders (2)
- Macerator w/Seacock Interlock System
- Refrigerator, Cockpit – Dual-Voltage, (120V/12V) (In Lieu of Std.Icemaker)
- Spotlight, 5" Remote-Controlled
- Upgraded Speakers, Amplifiers, Subwoofer & TV Surround Sound Stereo,
- Premium Cockpit Sound System w/Upgraded Component Speakers,
- Amplifiers, Subwoofer & Transom Stereo Remote
- Stereo Remote Control – Additional Unit on Transom
- Table, Cockpit Removable
- TV, 32" Flatscreen – Salon
- TV, 10.4" LCD Flip-Down 12V w/Remote DVD Player & Wireless Headphones – Mid-Berth
- Vacuum System, Central – 120V (Beam®)
- Lightening Arrester
- 5.0 kW Kohler® Low CO – Gas, 120V/60 Cycle (278 Hours)
 - Includes Remote Start, Muffler & Stainless-Steel Exhaust Outlet, Closed Cooling, Remote Fuel Filter, Seacock & Seawater Strainer

Hull & Deck Features

- Bow & Stern Eyes, Stainless Steel
- Bow Rail, Stainless Steel w/Welded Stanchions
- Cleats, Custom Sea Ray® 10" Thru-Bolted – Stainless Steel (8)
- Deck Fill Plates, Stainless Steel
- Drain Plugs, Brass-Threaded-Garboard
- Gel Coat, Blue (UPGRADE)
- Graphics, Striping
- Handrails, Stainless Steel – Sport Spoiler (2)
- Handrails, Stainless Steel – Transom (2)
- Handrails, Stainless Steel -
- Windshield (2)
- Hatch, Deck Vent – Clear, Tinted &
- Tempered w/Locks & Sky Screen
- Cover – Trapezoidal
- Light, Stern
- Lights, Navigation – Stainless Steel
- Portlights, Stainless Steel w/Curtains (4 Opening)
- Resin, High-Performance Vinylester
- Rub Rail, PVC w/Stainless-Steel Insert
- Skylights, Circular – Salon (2)
- Storage, Transom Wall – (For Fenders & Gear)
- Swim Platform, Integral/Extended w/Stainless-Steel Three-Step Swim Ladder
- Thru-Hull Fittings, Stainless Steel

- Toe Rail, Molded Fiberglass – Deck
- Vent System, Engine Room – Integral
- Windshield, Tempered/Tinted Curved Glass w/Electric Front Vent & Stainless-Steel Supports
- Windshield Wipers
- Canvas (Sunbrella®):
 - Aft Curtain w/Bungee Straps
 - Aft Sunshade
 - Soft -Hardtop
 - Canvas Storage Bag
 - Front Curtains
 - Side Curtains
- Windlass System:
 - Anchor, Galvanized
 - Anchor Chute, Stainless Steel
 - Anchor Rope/Chain Storage w/Hatch
 - Windlass, Rope/Chain w/Foot
 - Switches
- Certifications:
 - Meets Applicable USCG &
 - ABYC Standards
 - NMMA Certification
 - Mercury Installation Quality Certification

Cockpit Features

- Beverage Holders (9), Stainless Steel
- Carpet Liner, Snap-In
- Door, Cabin Entry (Sliding & Lockable) – Acrylic
- Door, Transom – Acrylic
- Floor Liner, Fiberglass – Self-Bailing
- Hatch, Engine Room – Electrically Actuated
- Ice Chest, Insulated – Built-In
- Icemaker, 120V
- Lighting, Indirect
- Outlet, 12V Accessory
- Outlet, 120V GFI Protected
- Seating, Bucket w/Slider, Flip-Up
- Thigh-Rise Bolster & Fiberglass
- Shell – Port Companion
- Seating, Bucket (2) – w/Sliders, Flip-Up
- Thigh-Rise Bolsters, Fiberglass
- Shells & Storage Below Helm Seat

- Seating, U-Shaped – Aftw/Fiberglass Storage Base
- Sport Spoiler, Molded Fiberglass (Seamless) w/Overhead Lighting
- Steps, Boarding – Molded-In
- Storage, Side Panels
- Table, Cockpit w/Sun Pad Filler Cushions
- Wet Bar w/Sink, Stainless-Steel Faucet & Handrail, Carry-On Cooler, & Storage Below

Cabin Features

- Carbon Monoxide Monitor
- Carpet, Deep-Pile BCF – 44-Ounce
- Carpet Runners, Interior (Sunbrella)
- Lighting, 12V
- Outlet, 12V Accessory
- Outlet, Phone
- Outlets, 120V GFI Protected
- Pillows, Accent
- Stereo, Clarion® 12V AM/FM Single
- CD & Sirius® Satellite Receiver &
- Antenna, MP3 Port, 6-Disc CD
- Changer, Amplifier, Speakers (8),
- Digital Cockpit Remote Control & Speaker Selector Switches
- Storage, In-Floor
- TV, 15" Flatscreen LCD (120V) w/Remote DVD Player, DVD
- Storage, Coax Outlet & Gain Control Panel
- Wood Interior Package – Cherry
- Wood Cabinets
- Salon/Dinette:
- Lighting, 12V
- Mirrors, Accent
- Seating, Crescent-Shaped Sofa -
- Converts to Bed
- Storage, Gunwale Cabinets
- Table, Dinette – Solid Wood
- w/Designated Storage

Galley:

- Countertop, Molded Fiberglass w/Granite-Colored Gel Coat, Sink, Faucet &
- Corian Sink Cover
- Flooring, Teak (UPGRADE)
- Handrail, Stainless Steel

- Microwave/Coffeemaker Combo
- Power Vent, 12V
- Refrigerator, Dual-Voltage 120V/12V
- Storage, Drawers w/Cutlery Insert
- Storage, Upper & Lower w/Designated Plate Storage
- Stove, 120V Recessed Two-Burner w/Corian® Cover
- Trash Receptacle

V-Berth:

- Berth, Full-Size (Island-Style) w/Storage Below
- Curtain, Privacy (Hideaway)
- Hanging Locker w/Mirrored Door
- Mirrored Rope Locker Bulkhead
- Storage, Cabinet – Port
- Storage, Gunwale Cabinets

Mid-Berth:

- Curtain, Privacy (Hideaway)
- Mirrored Bulkhead
- Portlights, Stainless Steel (1 – Opening)
- Seating, Conversation Pit – Converts to Double Berth w/Slide Out Base &
- Dedicated Filler Cushion Storage
- Storage, Cabinets

Head:

- Handrail, Stainless Steel
- Head (VacuFlush®)
- Head, Enclosed – Full Fiberglass w/Shower & Curtain
- Mirror
- Power Vent, 12V
- Storage, Medicine Cabinet w/Mirrored Doors
- Vanity w/Sink, Faucet & Storage Below

Technical Features

Control Station:

- Alarms, Engine – Oil & Water (Audible)
- Alarms, High-Water – Bilge & Cabin
- Compass
- Emergency Start System – Engines
- Horn

- Instrument Panel – High-Gloss Burl
- Shift & Throttle Controls w/Gold Knobs
- SmartCraft™ Diagnostics:
 - Instrumentation, Custom Sea Ray SmartCraft 4-in-1 Multigauges (2) w/Low-Glare Blue Night Lighting & Chrome Bezels (Includes: Fuel Level, Oil Pressure, Voltmeter, Water Temperature)
- SmartCraft System Speedometer
 - (Includes: Air & Water Temperature, Combined Fuel Level Range, GPS Interface)
- SmartCraft System Tachometers (2) (Includes: Depth, Engine Alarms/Hour Meters, Fuel Consumption/Usage, Trim Level)
- Steering, Hydraulic (V-Drives Only)
- Steering, Tilt Wheel
- Steering Wheel, Wood-Accent
- Switch Pads, Illuminated
- Weatherproof Electronic w/ISO
- Symbols & Dimmer Control
- Tilt & Trim, Power (Sterndrives Only)

Electronics:

- Electronics Circuit, 30 Amp
- VHF Radio w/8' Fiberglass Antenna & Stainless-Steel Ratchet Mount
- Raymarine C80 Chartplotter/GPS
- Raymarine 4kW Closed-Dome Radar 48NM (UPGRADE)
- Raymarine Depth (UPGRADE)
- Simrad Auto Pilot AP24 (UPGRADE)

Electrical Systems:

- Battery Charger/Converter, 120V
- Battery Solenoid Switches, 12V (3)
- Battery Trays w/Mounts
- Breaker Panels, Waterproof – Electronic
- Interface Modules (Helm & Engine Room)
- Isolators, Galvanic (2)
- Mercathode II (Sterndrives Only)
- Panel, DC Main Breaker
- Panel, Main Distribution – AC
- Panel, Main Distribution – DC
- Shore Power, Dual 120V/30 Amp
- w/50' Cords & Adapters
- TV/Phone Inlet w/TV Antenna & TV Shore Cord
- Wiring, Color-Coded w/Chafe Protection
- Air Conditioning/Heating:

- Reverse Cycle System (12,000 BTU)
- Custom Integral Vent System

Engine Room:

- Bilge Pump, 12V Automatic
- Bilge Pumps, 12V Automatic High-
- Water (1 Bilge, 1 Cabin)
- Blowers, 12V Bilge (2)
- Exhaust, Underwater – Patented (V-Drives Only)
- Fire Suppression System – Automatic
- w/Manual Pull
- Gel-Coated Engine Room
- Insulation, Engine Room – 2" w/Vinyl
- Barrier Under Main Hatch
- Lighting, 12V
- Oil Filters – Remote

Fuel System:

- Fuel Lines, USCG – Type A-1
- Fuel Tanks, Aluminum w/Electric Shutoff
- Valves & Electric Sending Units

Water System:

- Freshwater Washdown Spigot
- Pressure Water System w/12V Pump
- Shower, Cockpit – Hot & Cold
- Water Heater, 120V (6-Gallon) w/Exchanger
- Water Inlet, Dockside
- Water Manifold System
- Water Tank (45-Gallon)

Underwater Gear:

- BRAVO III Stern-Drive
- Stainless Steel Propellers
- Trim Tabs, Hydraulic

Exclusions

Owner's personal belongings.

Disclaimer

The Company offers the details of this vessel or yacht in good faith but cannot guarantee or warrant the accuracy of this information nor warrant the condition of the vessel. A buyer should instruct his representatives, agents, or his surveyors, to investigate such details as the buyer desires validated. This vessel or yacht is offered subject to prior sale, price change, or withdrawal without notice.

PHOTOS













© B. Shane Faunce



© B. Shane Faunce



© B. Shane Faunce



© B. Shane Faunce

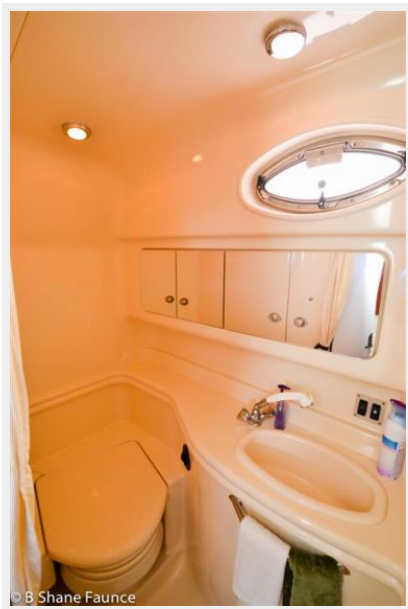


© B. Shane Faunce



© B. Shane Faunce













CONTACTS

Andrey Shestakov, leading yacht broker of the sales department of Shestakov Yacht Sales Inc. Shestakov Yacht Sales Inc., the official representative of the Miami/Fort Lauderdale FL headquarters.

Contact details

Email: andrey@shestakovyachtsales.com

Web: shestakovyachtsales.com/en/

Telephones

USA: +1(954)274-4435

Office hours

Monday – Saturday: **9:00 - 21:00** EDT

Sunday: **closed**

Address



Harbour Towne Marina, 850 NE 3rd St,
STE 213, Dania, FL 33004