

TODAY'S SPECIAL — MERIDIAN



Builder: MERIDIAN

Year Built: 2008

Model: Motor Yacht

Price: PRICE ON APPLICATION

Location: United States

LOA: 58' 0" (17.68m)

Beam: 17' 4" (5.28m)

Cruise Speed: 21 Kts. (24 MPH)

Max Speed: 25 Kts. (29 MPH)

Our experienced yacht broker, Andrey Shestakov, will help you choose and buy a yacht that best suits your needs **Today's Special — MERIDIAN** from our catalogue. Presently, at Shestakov Yacht Sales Inc., we have a wide variety of yachts available on our sale's list. We also work in close contact with all the big yacht manufacturers from all over the world.

If you would like to buy a yacht **Today's Special — MERIDIAN** or would like help answering any questions concerning purchasing, selling or chartering a yacht, please call **+1(954)274-4435**

TABLE OF CONTENTS

TABLE OF CONTENTS	2
SPECIFICATIONS	4
Basic Information	4
Dimensions	4
Speed, Capacities and Weight	4
Accommodations	4
Hull and Deck Information	4
Engine Information	5
DETAILED INFORMATION	6
Manufacturer Provided Description	6
Engines	6
ADDITIONAL EQUIPMENT	6
Exclusions	6
Disclaimer	6
PHOTOS	7
Pilothouse	7
Pilothouse Seating	7
Galley	7
Galley	7
Saloon	7
Seating oposit Galley	8
Master Stateroom	8
master Head	8
Guest Head	8
Guest Stateroom	8
Vip Stateroom	8
Laundrey Area	9
Fly Bridge Helm	9

Fly Bridge seating	9
Aft seating and Dingy&Davit	9
Forward Sun area	9
Aft Cockpit	10
Engine room Access	10
Engine Room Port	10
Engine Room Stb	10
Engine Room	10
Yacht Her Slip	11
Generator	11
Layout	11
CONTACTS	12
Contact details	12
Telephones	12
Office hours	12
Address	12

SPECIFICATIONS

Basic Information

Category: Motor Yacht

Model Year: 2008

Year Built: 2008

Country: United States

Dimensions

LOA: 58' 0" (17.68m)

Beam: 17' 4" (5.28m)

Clearance: 19' 7" (5.97m)

Speed, Capacities and Weight

Cruise Speed: 21 Kts. (24 MPH)

Max Speed: 25 Kts. (29 MPH)

Displacement: 59920 Pounds

Water Capacity: 218 Gallons

Holding Tank: 74 Gallons

Fuel Capacity: 800 Gallons

Accommodations

Total Berths: 6

Total Heads: 2

Hull and Deck Information

Hull Material: Fiberglass

Engine Information

Engines: 2

Manufacturer: Cummins Mercruiser

Model: QSM II

Engine Type: Inboard

Fuel Type: Diesel

DETAILED INFORMATION

Manufacturer Provided Description

As the flagship of Meridian Yachts' fleet, the 580 Pilothouse is designed to be a masterpiece of stability, performance and comfort. She features raised toe rails and gunwales, molded-in steps and broad side decks for increased safety and ease of movement on the water. Her state-of-the-art amenities include wireless Docking On Command remote control, Northstar electronics, stand-up access to the engine room, transom docking lights and underwater exhaust. And, her stylish lines and broad shoulders conceal unsurpassed living spaces - from a full-beam master stateroom and generous guest accommodations to an impressive pilothouse, exceptional galley facilities and a salon with fully-appointed entertainment center. When it comes to cruising comfort, you don't have to be an artist to appreciate the masterpiece that is the 580.

Engines

Twin 715 hp Cummins diesels

Passport Premier Warranty to Nov. 2015

ADDITIONAL EQUIPMENT

- Wireless Bow & Stern Thrusters
- Controls
- Inverter
- Central VAC
- Cable Master
- Underwater Lights

Exclusions

Owner's personal belongings.

Disclaimer

The Company offers the details of this vessel or yacht in good faith but cannot guarantee or warrant the accuracy of this information nor warrant the condition of the vessel. A buyer should instruct his representatives, agents, or his surveyors, to investigate such details as the buyer desires validated. This vessel or yacht is offered subject to prior sale, price change, or withdrawal without notice.

PHOTOS

Pilothouse



Pilothouse Seating



Galley



Galley



Saloon



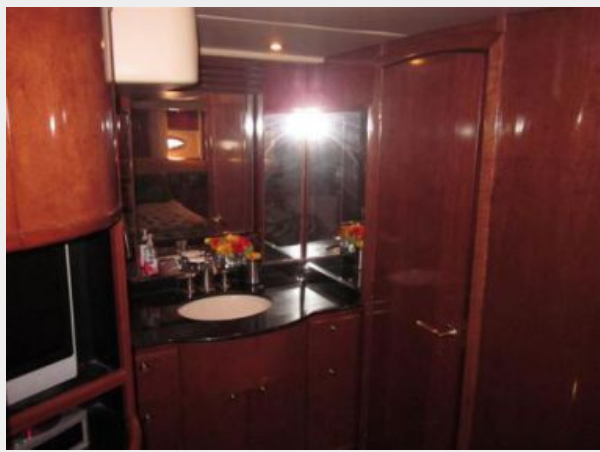
Seating oposit Galley



Master Stateroom



master Head



Guest Head



Guest Stateroom



Vip Stateroom



Laundrey Area



Fly Bridge Helm



Fly Bridge seating



Aft seating and Dingy&Davit



Forward Sun area



Aft Cockpit



Engine room Access



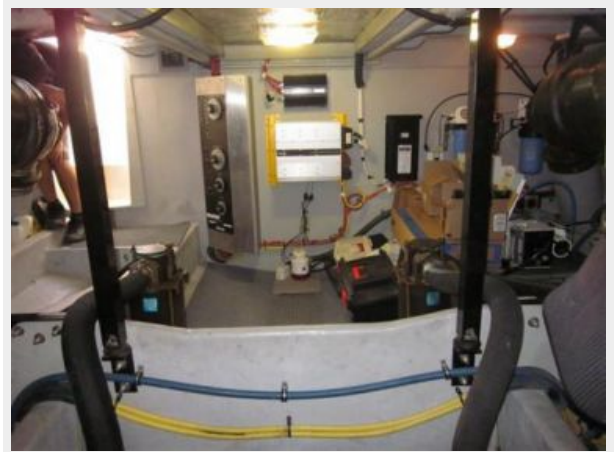
Engine Room Port



Engine Room Stb



Engine Room



Yacht Her Slip



Generator

Layout



CONTACTS

Andrey Shestakov, leading yacht broker of the sales department of Shestakov Yacht Sales Inc. Shestakov Yacht Sales Inc., the official representative of the Miami/Fort Lauderdale FL headquarters.

Contact details

Email: andrey@shestakovyachtsales.com

Web: shestakovyachtsales.com/en/

Telephones

USA: +1(954)274-4435

Office hours

Monday – Saturday: **9:00 - 21:00** EDT

Sunday: **closed**

Address



Harbour Towne Marina, 850 NE 3rd St,
STE 213, Dania, FL 33004