

NORTHSTAR — SILVERTON



Судостроитель: SILVERTON

Год постройки: 1998

Модель: Моторная яхта

Цена: **ЦЕНА ЯХТЫ ПО ЗАПРОСУ**

Местонахождение: United States

Длина общая: 37' 0" (11.28m)

Ширина: 14' 1" (4.29m)

Мин. осадка: 3' 6" (1.07m)

Крейс. скорость: 18 Kts. (21 MPH)

Макс. скорость: 23 Kts. (26 MPH)

Купить Northstar — SILVERTON а также выбрать подходящую вам яхту из нашего каталога яхт вам поможет опытный яхтенный брокер Андрей Шестаков. На сегодняшний день компания Shestakov Yacht Sales Inc. имеет большое количество яхт в собственном списке продаж, а также тесно сотрудничает со всеми крупными яхтенными производителями по всему миру.

Для того чтобы купить яхту Northstar — SILVERTON а также проконсультироваться по любому вопросу связанному с покупкой, продажей, чартером яхт позвоните по телефону **+7(918)465-66-44**.

ОГЛАВЛЕНИЕ

ОГЛАВЛЕНИЕ	2
ХАРАКТЕРИСТИКИ	3
Обзор	3
Основная информация	4
Размеры	4
Скорость, вместимость и масса	4
Размещение	4
Корпус и палуба	4
Информация о двигателе	5
ПОДРОБНОЕ ОПИСАНИЕ	6
Accommodations	6
Electrical Equipment	7
Deck & Hull Equipment	7
Fly Bridge	7
Engine & Mechanical	8
Electronics	8
Enclosed Aft Deck	8
Safety & Fire Protection	8
Disclaimer	9
Исключения	9
Отказ от ответственности	9
ФОТОГРАФИИ	10
КОНТАКТЫ	20
Контактная информация	20
Телефоны	20
Время работы	20
Адрес	20

ХАРАКТЕРИСТИКИ

Обзор

Lots of interior space is a hallmark of this popular Silverton model! Great layout offers double staterooms fore and aft, separated by the expansive main cabin living area. Ideal liveaboard or couple's cruiser, this yacht was ordered with an enviable power upgrade to twin 350-hp diesel CAT 3116's for impressive 18-23 knot performance! Nicely equipped, well cared for and ready to cruise or move aboard.

BROKER COMMENTS:

A huge sales success for Silverton, this model appeals to those looking for an affordable, maxi-volume cruising yacht. This model called the 372 from 1996 - 1998 and renamed the 392 in 1999, had a successful production run from 1996 through 2001. By eliminating the side decks in favor of "elevated staircases" which the Manufacturer called "Sidewalks", Silverton designers were able to produce a distinctive midsize motoryacht whose salon dimensions are truly expansive for a boat in this size range. She rides on a high freeboard modified vee hull with a solid fiberglass bottom and a wide 14' 1" beam. Hands down, the principal feature of the 372/392 is her enormous full beam salon complete with cherry joinery, Ultra-leather sofa, large dinette and full service galley. There are large double berths in each stateroom and each head contains a separate stall shower. Topside the flybridge is arranged with bench seating fore and aft of her centerline helm console. The aft deck features a hardtop, wet bar and ample seating area for a good sized crowd and she is enclosed with sunbrella/eisenglass curtains with screens to allow those onboard a great outside seating and viewing area. A curved molded in staircase descends to the extended swim platform and there are a couple molded in steps up to the flybridge from the aft deck and molded in steps port and starboard from the bridge to the foredeck for easy and safe access for line handling, sun lounging etc so there are NO LADDERS anywhere on this boat to climb. . . . Great for Grandkids, Pets, Ease and Safety of getting around onboard for anyone !!

The boat is for sale by her 2nd owners, one of whom is a retired Coast Guard Captain. This boat would be a great liveaboard/cruiser either stateside or in the island and would also make a great "Great Loop" Liveaboard Cruiser.

Основная информация

Тип судна: Моторная яхта

Подкатегория: Aft Cabin

Модельный год: 1998

Год постройки: 1998

Страна: United States

Верх: Bimini Top

Открытая палуба мостика: Да

Размеры

Длина общая: 37' 0" (11.28m)

Длина по ватерлинии: 39' 0" (11.89m)

Ширина: 14' 1" (4.29m)

Мин. осадка: 3' 6" (1.07m)

Трапы: 18' 6" (5.64m)

Скорость, вместимость и масса

Крейс. скорость: 18 Kts. (21 MPH)

Макс. скорость: 23 Kts. (26 MPH)

Водоизмещение: 23577 Pounds

Вместимость воды: 100 Gallons

Вместимость сточного бака: 60 Gallons

Объем топливного бака: 286 Gallons

Размещение

Всего кают: 2

Корпус и палуба

Материал корпуса: Fiberglass

Комплектация корпуса: Modified V-Hull

Цвет корпуса: white

Информация о двигателе

Двигатели: 2

Производитель: Caterpillar

Модель: 3116TA

Тип двигателя: Inboard

Тип топлива: Diesel

ПОДРОБНОЕ ОПИСАНИЕ

Accommodations

The Silverton 372/392 Motoryacht has the interior space and feel of a 46 footer. The salon is expansive and truly livable as the designers utilized the full width beam in the width of the salon. The forward and aft staterooms are both accommodating for two persons and each has an adjoining head with a stall shower.

BROKER COMMENTS: This innovative "sidewalk" design aft cabin motoryacht has molded steps from the foredeck to the flybridge and from the aft deck to the swim platform. Besides mobility and safety aspects, this design allows a very expansive, gunnel to gunnel wide, salon that rivals that of much larger vessels. Vessel has a hardtop enclosed sundeck along with an enclosed flybridge. Her beautiful interior sleeps six. Two on a berth in the forward stateroom, two on a pull out salon settee and two more in owner's aft cabin.

HEADS AND SHOWERS:

Vessel has two heads, each with vaccu-flush heads, stall showers and vanities. Aft head is ensuite with Vanity and Stall shower while guest head is forward to port with 2 entry doors, one from companionway to serve as guest/day head and a private entry door from the forward stateroom. BOTH heads feature stall showers. The boat offers 1 main waste holding tank with an o overboard mascerator or a deck fill pump out.

SALON FEATURES:

- Two level salon/galley
- L shape ultra leather salon settee w/ pull out double bed
- Removable foot stool w/ built-in storage under sofa's
- Cherrywood interior
- Canvas runners for carpeting
- Blinds
- Staterooms: Pillows, sheets and comforters

(Show to: **Public**) Galley

- L shaped ultra leather dinette w/ teak table
- Corian countertop
- Under and over counter cabinets

- **Norcold full size refrigerator and freezer**
- **3 burner Princess electric stove w/oven**
- **Microwave**
- **Toaster oven**
- **Cups, dishes, pots & pans**
- **Ample Storage to Liveaboard for extended stays**

Electrical Equipment

- **8 KW Kohler diesel generator (rebuilt)**
- **Automatic battery charging system**
- **Dual zone electric heat and air conditioning**
- **Inverter - for entertainment system**
- **Multiple 110v outlets**
- **Hot water heater**

Deck & Hull Equipment

- **Hard top over raised aft deck**
- **Electric Anchor windlass (Horizon Express)**

- **1 Delta plow anchor with 200 feet anchor chain 1 Danforth anchor with 150 feet rope**

- **Trim tabs**

- **Extended swim platform with swim ladder and hot water shower**

- **Recessed walkways**
- **Molded stairways**
- **Full eisen-glass enclosure around bridge and aft deck**

Fly Bridge

The spacious flybridge of the 372/392 Motoryacht includes a contoured triple helm seat and comfortable forward bench, with plenty of legroom for all passengers and a centerline

command station for the helmsman. Short steps lead down to the inviting aft deck, complete with wet bar, icemaker and full enclosure with screens, for all-weather enjoyment.

- Custom Sunbrella/eisenglass Full enclosure on Flybridge 2010 w/ zip out panels
- NEW (January 2015) Upholstered flybridge seats

Engine & Mechanical

- Twin 3116TA caterpillar main engines, diesel, 350 hp each
- Fresh Water Cooling Engines, Generator
- Racor fuel filters
- REVERSO Automatic electric oil changing system
- Hot water Heater
- 2 Vaccu-Flush Heads
- Maserator and deck Fill Pumpout for Head

Electronics

- NEW Garmin color GPS/CHARTPLOTTER
- Standard Horizon SR30 Depth Finder
- VHF Radio Standard Horizon Eclipse
- NEW 24" flat screen TV in salon
- 21" flat screen tv w/built in DVD player in aft stateroom
- Koss AM/FM/CD stereo
- NEW LG DVD player in salon

Enclosed Aft Deck

- Aft Deck Hard top
- Custom sunbrella/eisenglass full enclosure on aft deck 2010 w/ zip out panels and bug screens
- Wet Bar with Raritan ice maker, sink, bottle storage, storage under bar
- 4 aft deck faux wicker furniture with cushions
- Molded-in steps to swim platform and to Bridge (NO LADDERS)
- Stainless BBQ

Safety & Fire Protection

- Emergency 4 person raft
- MCMurdo G5 category 2 Epirb
- Halon automatic fire fighting system

- **3 CO detectors**
- **Life jackets**
- **Docklines**

Disclaimer

The Company offers the details of this vessel in good faith but cannot guarantee or warrant the accuracy of this information nor warrant the condition of the vessel. A buyer should instruct his agents, or his surveyors, to investigate such details as the buyer desires validated. This vessel is offered subject to prior sale, price change, or withdrawal without notice.

Исключения

При продаже яхты исключаются личные вещи владельца.

Отказ от ответственности

Компания предоставляет описание судна или яхты добросовестно, но не может гарантировать точность этой информации, а также не ручается за техническое состояние. Покупатель должен проинструктировать своих агентов или оценщиков исследовать представленную информацию более подробно, по собственному желанию. Продажа судна или яхты, изменение цены или снятие с продажи будет происходить без предварительного уведомления.

ФОТОГРАФИИ

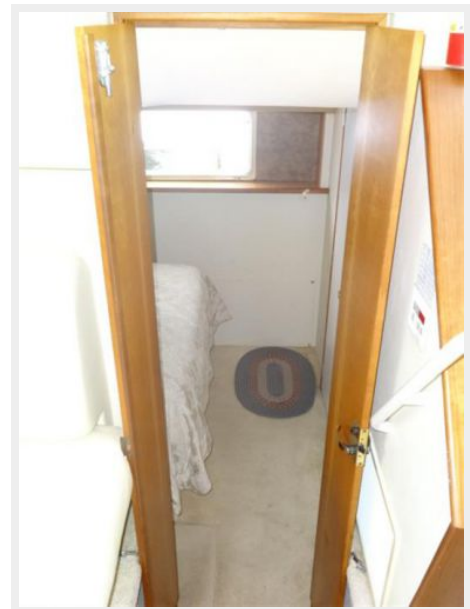






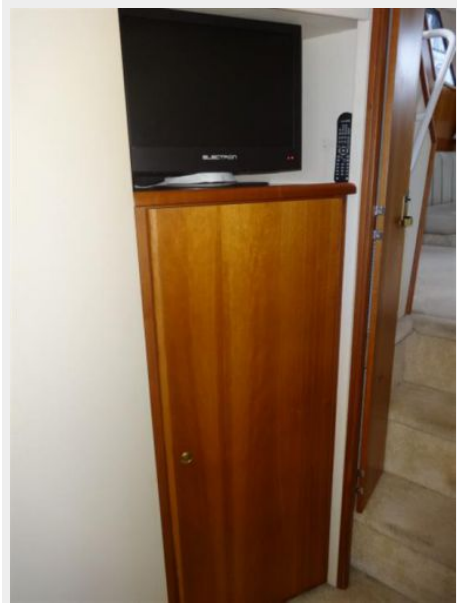














КОНТАКТЫ

Андрей Шестаков (Andrey Shestakov) – ведущий яхтенный брокер отдела продаж яхт и судов компании Shestakov Yacht Sales Inc. Официальный представитель Shestakov Yacht Sales Inc. для русскоговорящих клиентов в центральном офисе компании в Майами/Форт Лодердейл/Флорида/США.

Контактная информация

Email: andrey@shestakovyachtsales.com

Web: shestakovyachtsales.com

Телефоны

Краснодарский край: **+7(918)465-66-44**

США, Майами, Флорида: **+1(954)274-4435**

Время работы

Понедельник – Суббота: **9:00 - 21:00**
EDT

Воскресенье: **Закрето**

Адрес



Harbour Towne Marina, 850 NE 3rd St,
STE 213, Dania, FL 33004