

LOVE IT — LIBERTY YACHTS



Builder: LIBERTY YACHTS

Year Built: 1996

Model: Sport Fisherman

Price: PRICE ON APPLICATION

Location: United States

LOA: 42' 0" (12.80m)

Beam: 14' 9" (4.50m)

Min Draft: 3' 6" (1.07m)

Cruise Speed: 26 Kts. (30 MPH)

Max Speed: 31 Kts. (36 MPH)

Our experienced yacht broker, Andrey Shestakov, will help you choose and buy a yacht that best suits your needs **Love It — LIBERTY YACHTS** from our catalogue. Presently, at Shestakov Yacht Sales Inc., we have a wide variety of yachts available on our sale's list. We also work in close contact with all the big yacht manufacturers from all over the world.

If you would like to buy a yacht **Love It — LIBERTY YACHTS** or would like help answering any questions concerning purchasing, selling or chartering a yacht, please call **+1(954)274-4435**

TABLE OF CONTENTS

TABLE OF CONTENTS	2
SPECIFICATIONS	4
Overview	4
Basic Information	4
Dimensions	4
Speed, Capacities and Weight	4
Accommodations	5
Hull and Deck Information	5
Engine Information	5
DETAILED INFORMATION	6
Accommodations and Layout	6
Galley	6
Head	6
Miscellaneous Deck and Hull	6
Electronics and Navigation	7
Tower	7
Electrical System	8
Engine & Equipment	8
Fishing Equipment	9
Salesman's Remarks	9
Exclusions	9
Disclaimer	9
PHOTOS	10
CONTACTS	15
Contact details	15
Telephones	15
Office hours	15
Address	15



SPECIFICATIONS

Overview

Here's your chance to own one of the legendary Liberty semi-custom sportfish express yachts. This Jannace designed hull is recognized worldwide as one of the safest and best riding on the water. Professionally Repowered in 2009 with efficient 6CTA 450 HP Cummins engines, this vessel is clean, completely serviced, and ready for winter fishing or spring Bahama runs. If you're looking for a safe dependable boat that turns heads in every marina, look no further.

PRELIMINARY LISTING

Basic Information

Category: Sport Fisherman	Sub Category: Express
Model Year: 1996	Year Built: 1996
Refit Year: 2009	Country: United States
Coast Guard #: 1047488	

Dimensions

LOA: 42' 0" (12.80m)	Beam: 14' 9" (4.50m)
Min Draft: 3' 6" (1.07m)	

Speed, Capacities and Weight

Cruise Speed: 26 Kts. (30 MPH)	Max Speed: 31 Kts. (36 MPH)
Displacement: 25000 Pounds	Water Capacity: 150 Gallons
Fuel Capacity: 400 Gallons	

Accommodations

Total Berths: 1

Total Heads: 1

Hull and Deck Information

Hull Material: Fiberglass

Engine Information

Engines: 2

Manufacturer: Cummins

Model: 450C

Engine Type: Inboard

Fuel Type: Diesel

DETAILED INFORMATION

Accommodations and Layout

Entering the cabin down three steps, you'll immediately notice the beautiful birds eye maple veneer throughout. A nicely appointed galley is to port and a large head with separate shower is to starboard. Forward, you'll find the large queen berth and a dinette with comfortable seating for four.

Galley

- Nor cold refrigerator
- 2 burner Kenyon Euro Kera stove
- Sharp convection microwave oven
- Flat Screen TV
- Fresh water system
- Water heater
- Corian double basin sink
- Corian counters

Head

- Raritan fixture
- Electra-San
- Shower with door
- Vanity with mirror

Miscellaneous Deck and Hull

- Helm deck has L shaped seating to port with storage and large helm seat with storage underneath
- Bosch Marlin tower with bench seat
- Hardtop with powder coated windshield and full enclosure
- 1 Bomar hatch
- Pulpit with Lew-mar anchor windlass and stainless steel and bow rail
- Heavy duty stainless cleats and chocks
- Hull is foam cored vinyl ester construction that is impervious to water
- PVC and stainless rub rail
- Cockpit seating with cushion
- Salt & fresh water wash down

- Live well pump feed to cockpit
- Cockpit freezer
- Armstrong swim ladder mounted at the transom door
- Bolsters
- Engine room access through the cockpit

2014 Service Updates

- Full detail
- Tower metal sealed
- Outriggers polished and sealed

Electronics and Navigation

- Garmin 742XS GPS Chart Plotter
- Furuno Nav Net
- Furuno Navionics
- Furuno RD-30
- Robertson Auto Pilot
- ICOM IC-M504
- JVC stereo with speakers throughout (Sirius ready)

2015 UPDATES

- ICOM IC-M504
- Garmin 742-XS
- ICOM IC-M504
- JVC stereo with speakers throughout (Sirius ready)

Tower

Marlin tower with comfortable bench seat and very easy access

- Steering
- Synchronizer
- Panish controls
- Icom VHF radio
- Stamoid Top
- Bench seating

Electrical System

- 12V/110 AC/DC System
- Northern lights 6 kW generator 3,830 hours
- Battery charger
- Fuel and water gauges
- Battery parallel
- (4) 4D batteries (2013)
- Central Bonded electrical system

2015 Updates

- Generator 1000 hour service
- Generator cleaned and painted

Engine & Equipment

Repowered professionally in 2009 with new engines, shafts, wheels. The entire engine room was stripped, rewired, plumbed and painted.

- Cummins 6CTA 450 HP RE-MFG with 880 hours (2009)
- Cummins gauge package (2009)
- Marine exhaust (2009)
- Panish controls
- Gears Twin disc 2.1 (2009)
- Village Marine water maker Serviced 2014
- Oil exchange system mains
- Dripless shaft seals
- 10 gal stainless hot water heater
- Gen set
- Sound down insulation
- Fire-Boy system suppression system Serviced 2014

2014 UPDATES

- 1000 Hour Service FMT
- Generator Service
- Water Maker Serviced
- Raycor Fuel System Rebuilt
- Cutlass Bearing Replaced
- Rudder Seals Replaced

- Rudder Bearings Replaced

Fishing Equipment

- Double spreader riggers
- Fighting Chair
- Bosch marlin tower with seating
- Transom door with gate
- Large freezer to starboard
- (6) transom rod holders
- (8) tower and bridge rod holders
- Rod storage
- live well pump on deck

Salesman's Remarks

This is a great opportunity to own a turnkey, high quality, semi-custom Liberty at a fraction of her replacement cost. She boasts super performance and an unbelievable ride; a great rough water fishing machine that is timeless in appeal. Don't hesitate! Love It is fish ready and priced to sell and this boat won't last long.

Call today for a convenient private showing of this exceptional opportunity.

Exclusions

Owner's personal belongings.

Disclaimer

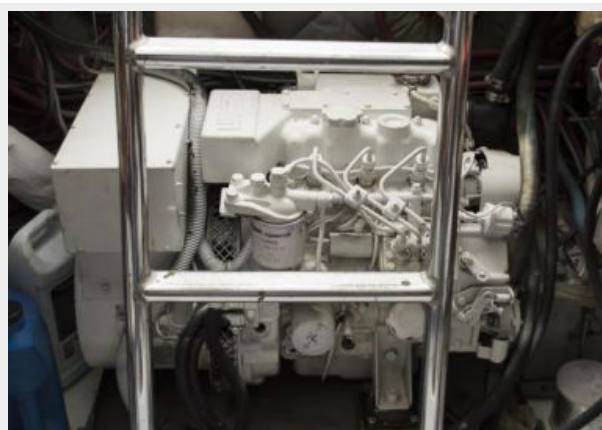
The Company offers the details of this vessel or yacht in good faith but cannot guarantee or warrant the accuracy of this information nor warrant the condition of the vessel. A buyer should instruct his representatives, agents, or his surveyors, to investigate such details as the buyer desires validated. This vessel or yacht is offered subject to prior sale, price change, or withdrawal without notice.

PHOTOS











CONTACTS

Andrey Shestakov, leading yacht broker of the sales department of Shestakov Yacht Sales Inc. Shestakov Yacht Sales Inc., the official representative of the Miami/Fort Lauderdale FL headquarters.

Contact details

Email: **andrey@shestakovyachtsales.com**

Web: shestakovyachtsales.com/en/

Telephones

USA: **+1(954)274-4435**

Office hours

Monday – Saturday: **9:00 - 21:00 EDT**

Sunday: **closed**

Address



Harbour Towne Marina, 850 NE 3rd St,
STE 213, Dania, FL 33004