

NEORION — ROHL PLOVILA D.O.O. GORNJA-RADGONA



Builder:

[Rohl Plovila d.o.o. Gornja-Radgona](#)

Year Built: 2007

Model: Cruising Sailboat

Price: PRICE ON APPLICATION

Location: Netherlands

LOA: 66' 10" (20.35m)

Beam: 14' 4" (4.35m)

Min Draft: 8' 3" (2.50m)

Cruise Speed: 10 Kts. (12 MPH)

Our experienced yacht broker, Andrey Shestakov, will help you choose and buy a yacht that best suits your needs Neorion — Rohl Plovila d.o.o. Gornja-Radgona from our catalogue. Presently, at Shestakov Yacht Sales Inc., we have a wide variety of yachts available on our sale's list. We also work in close contact with all the big yacht manufacturers from all over the world.

If you would like to buy a yacht Neorion — Rohl Plovila d.o.o. Gornja-Radgona or would like help answering any questions concerning purchasing, selling or chartering a yacht, please call +1(954)274-4435

TABLE OF CONTENTS

TABLE OF CONTENTS	2
SPECIFICATIONS	3
Overview	3
Basic Information	3
Dimensions	3
Speed, Capacities and Weight	3
Accommodations	3
Hull and Deck Information	4
Engine Information	4
PHOTOS	5
CONTACTS	9
Contact details	9
Telephones	9
Office hours	9
Address	9

SPECIFICATIONS

Overview

An unique opportunity to acquire a beautiful classic sloop before she is finished completely. Currently carpentry is underway but many details can still be determined. Buying "Neorion" will not only save you a lot of buildingtime but also lots of money due to the professional calculating and building supervision.

Basic Information

Category: Cruising Sailboat

Sub Category: Sloop

Model Year: 2007

Year Built: 2007

Country: Netherlands

Dimensions

LOA: 66' 10" (20.35m)

LWL: 42' 0" (12.80m)

LOD: 65' 0" (19.80m)

Beam: 14' 4" (4.35m)

Min Draft: 8' 3" (2.50m)

Clearance: 87' 0" (26.50m)

Speed, Capacities and Weight

Cruise Speed: 10 Kts. (12 MPH)

Displacement: 66138.6786 Pounds

Water Capacity: 356.6322702 Gallons

Holding Tank: 330.215065 Gallons

Fuel Capacity: 383.0494754 Gallons

Accommodations

Total Cabins: 5

Hull and Deck Information

Hull Material: Aluminum

Hull Configuration: Round

Hull Color: blue

Hull Designer: Alexander Schnaas

Exterior Designer: Horst Stichnoth

Interior Designer: Alexander Schnaas

Engine Information

Engines: 1

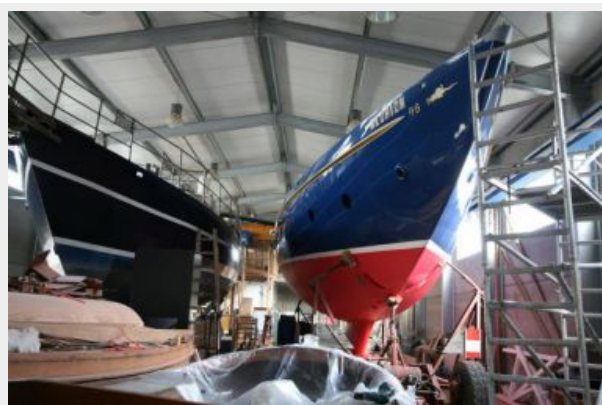
Manufacturer: MTU

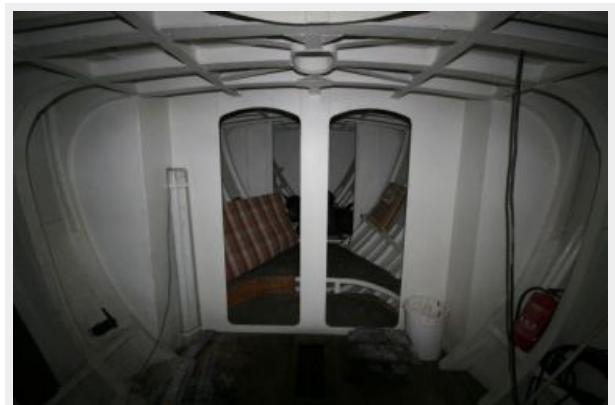
Model: 6R099 TE 61

Engine Type: Inboard

Fuel Type: Diesel

PHOTOS









CONTACTS

Andrey Shestakov, leading yacht broker of the sales department of Shestakov Yacht Sales Inc. Shestakov Yacht Sales Inc., the official representative of the Miami/Fort Lauderdale FL headquarters.

Contact details

Email: andrey@shestakovyachtsales.com

Web: shestakovyachtsales.com/en/

Telephones

USA: +1(954)274-4435

Office hours

Monday – Saturday: **9:00 - 21:00** EDT

Sunday: **closed**

Address



Harbour Towne Marina, 850 NE 3rd St,
STE 213, Dania, FL 33004